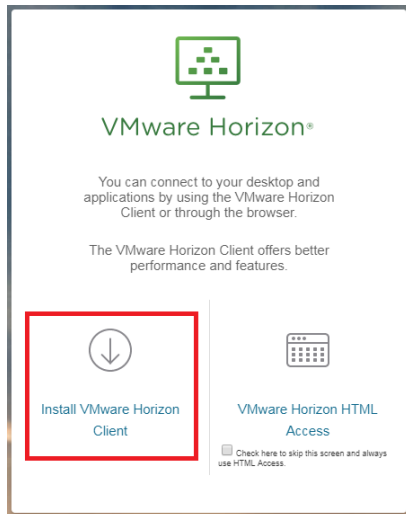
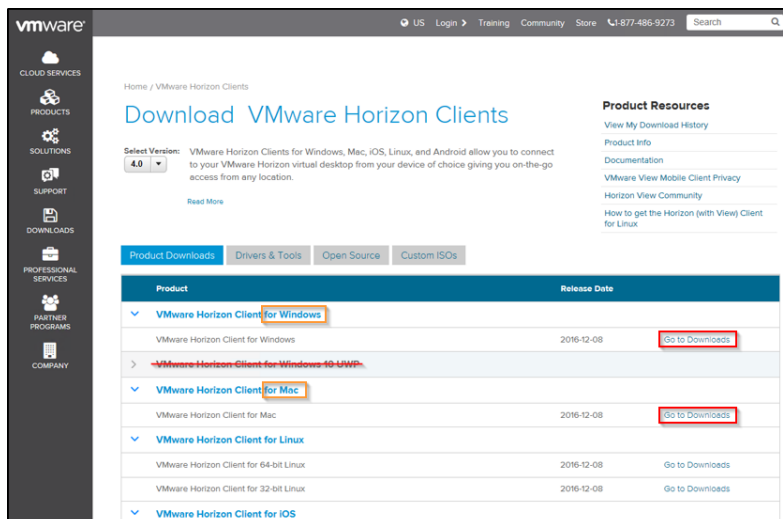


Setup Horizon Client for First Time Use

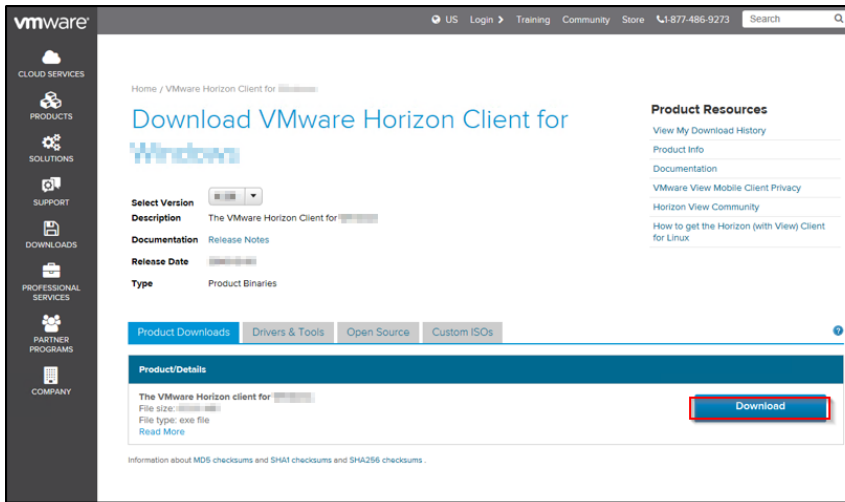
1. Go to <https://work.excelsior.edu> from your web browser of choice.
2. Click on **Install VMware Horizon Client**.



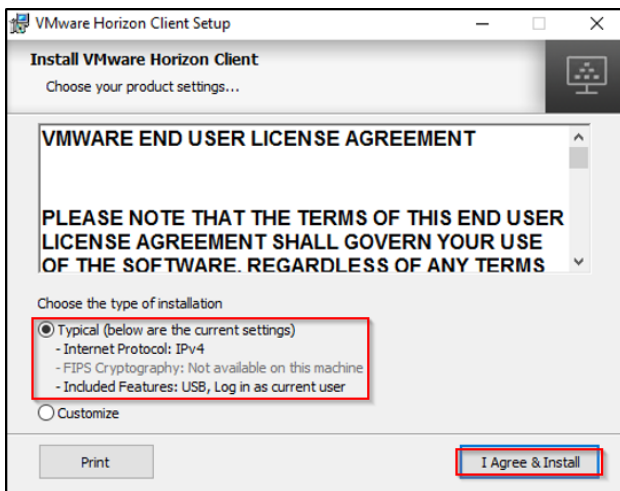
3. This will take you to the VMware page to download the latest client.
4. Click on the **Go to Downloads** link next to your computers Operating System. ***Note** – Windows 10 users **DO NOT** select the client for **Windows 10 UWP** as we have not had good luck with it.



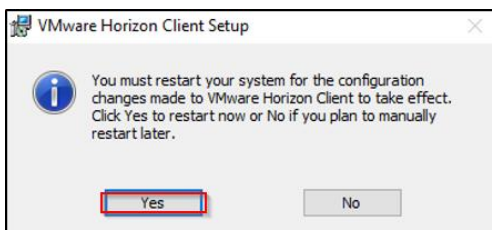
5. On the next page, click **Download**, then save the file. Please note where you save the installer.



6. Run the installer from where it was saved in Step 5.
7. Accept the defaults for the install.

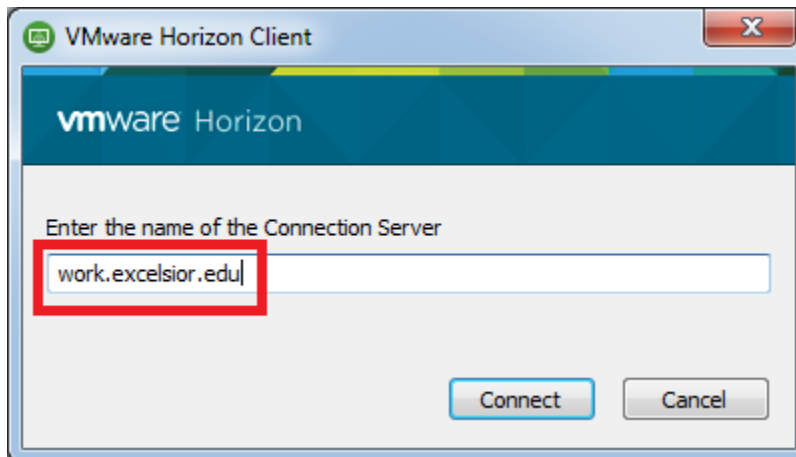


8. If prompted, you will need to reboot the computer before using the software.



9. Open the client from your computer Desktop or search for **VMware Horizon View Client** in your computer's program list.

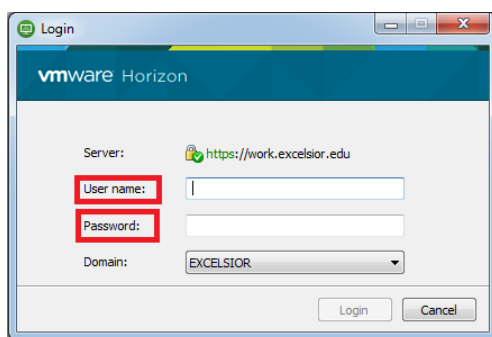
10. Once opened, double-click **Add Server** or click **New Server**.
11. Next, enter the name of the Connection Server – **work.excelsior.edu** and click **Connect**.



12. After accepting the disclaimer, you will be prompted to enter your username and RSA credentials.



13. Enter your Username and Password.

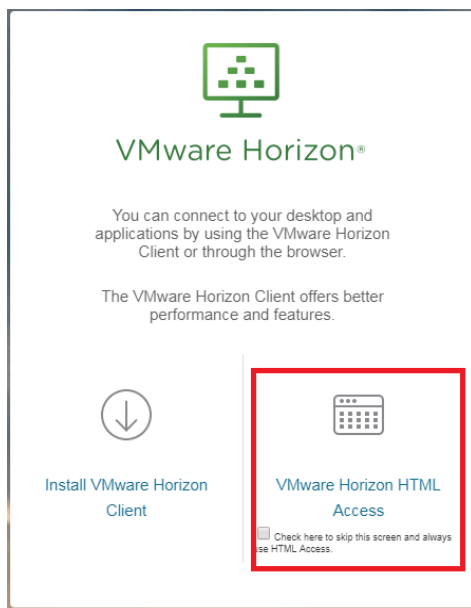


14. After login, double-click to launch applications.

Using Horizon HTML5 Access

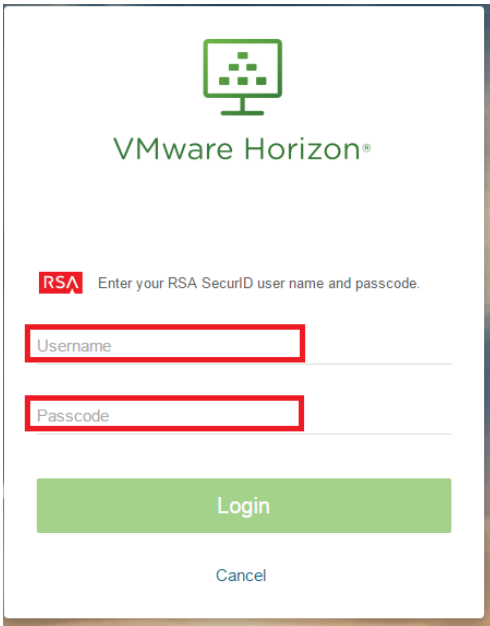
VMware Horizon HTML Access is an alternative to the Horizon Desktop client. The HTML5 Access option is convenient to use in HTML5 compatible browsers, but lacks some features.

1. Go to <https://work.excelsior.edu> from your web browser of choice.

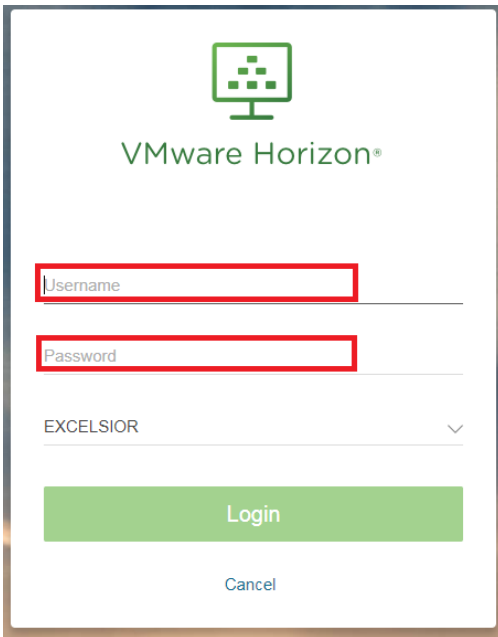


2. Click on **VMware Horizon HTML Access**.
3. After accepting the disclaimer, you will be prompted to enter your login credentials.

Note: You will be prompted for your **Username** and Passcode (**RSA**), then **Username** and Password (**Windows password**).



The image shows the VMware Horizon login interface for RSA SecurID. At the top is the VMware Horizon logo, which consists of a green monitor icon with a grid of dots on the screen. Below the logo is the text "VMware Horizon®". Underneath, there is a red "RSA" logo followed by the text "Enter your RSA SecurID user name and passcode.". There are two input fields: "Username" and "Passcode", both highlighted with red rectangular boxes. Below these fields is a large green "Login" button and a smaller blue "Cancel" link.



The image shows the standard VMware Horizon login interface. At the top is the VMware Horizon logo, which consists of a green monitor icon with a grid of dots on the screen. Below the logo is the text "VMware Horizon®". Underneath, there are two input fields: "Username" and "Password", both highlighted with red rectangular boxes. Below the "Password" field is a dropdown menu with the text "EXCELSIOR" and a downward arrow. Below these fields is a large green "Login" button and a smaller blue "Cancel" link.

4. After login, single-click to launch applications.