



School of Nursing Catalog

NLN

**Center of Excellence
in Nursing Education**

*Creating Environments that
Enhance Student Learning and
Professional Development
2011-2016*



CELEBRATING



YEARS

 **EXCELSIOR
COLLEGE®**

Start to FinishSM

The Philosophy of Excelsior College

What you know is more important than where or how you learned it.®

About Excelsior College

Excelsior College was founded in 1971 as the external degree program of the New York State Board of Regents. In 1998, the Board of Regents granted the College (then known as Regents College) an absolute charter to operate as a private, nonprofit, independent college. As are all accredited colleges in the state, Excelsior College is a member of The University of the State of New York. Today, the College is governed by a board of trustees comprised of individuals from across the United States who are prominent in the fields of business, education, government, and the professions.

A leader in online and distance learning, Excelsior College awards degrees at the associate and baccalaureate levels in liberal arts, nursing, business, technology, and health sciences, and at the master's level in liberal studies, nursing, and business. Certificate programs are also offered by the Schools of Business & Technology, Health Sciences, Liberal Arts, and Nursing. More than 141,000 persons have earned degrees from Excelsior College.

Excelsior's student body represents a diverse group of adult learners.

- The average age of an Excelsior student is 40; about 55 percent are female, 45 percent are male.
- More than one-third of our enrolled students are from groups historically underrepresented in higher education.
- More than one-quarter of our students are active-duty or reserve military personnel.
- Ten percent of our students come from New York State; the remaining are from the rest of the United States and other nations.

The faculty of Excelsior College, both full-time and adjunct, are drawn from many colleges and universities as well as from industry and the professions. They teach our courses, establish and monitor academic policies and standards, determine degree requirements and the means by which credit may be earned, develop the content for all examinations, and recommend degree conferral to the Excelsior College Board of Trustees.

The Mission of Excelsior College

Excelsior College provides educational opportunity to adult learners with an emphasis on those historically underrepresented in higher education. The College meets students where they are—academically and geographically, offering quality instruction and the assessment of prior learning.

The Vision of Excelsior College

Excelsior College provides global access to quality higher education for adult learners, helping them to overcome barriers of time,

distance, and cost. A world leader in the assessment of learning, Excelsior is nationally renowned for its facilitation of degree completion and its advocacy on behalf of adult learners.

Accreditation

Excelsior College is accredited by the Middle States Commission on Higher Education, 3624 Market Street, Philadelphia, PA 19104, telephone: 267-284-5000. The Middle States Commission on Higher Education is an institutional accrediting agency recognized by the U.S. Secretary of Education and the Council for Higher Education Accreditation.

The associate, bachelor's, and master's degree programs in nursing at Excelsior College are accredited by the National League for Nursing Accrediting Commission (NLNAC), 3343 Peachtree Road NE, Suite 850, Atlanta, GA 30326, telephone: 404-975-5000. The NLNAC is a specialized accrediting agency for nursing recognized by the U.S. Secretary of Education and the Council for Higher Education Accreditation (CHEA).

The bachelor's degree programs in electrical engineering technology and nuclear engineering technology are accredited by the Technology Accreditation Commission of ABET, <http://www.abet.org>, 111 Market Place, Suite 1050, Baltimore, MD 21202, 410-347-7700. ABET is a specialized accrediting agency recognized by the Council for Higher Education Accreditation (CHEA).

The bachelor's degree programs in accounting (NYS CPA Track) and business are accredited by the International Assembly for Collegiate Business Education (IACBE), 11257 Strang Line Rd., Lexena, KS 66215, telephone: 913-631-3009. IACBE is a specialized accrediting agency recognized by the Council for Higher Education Accreditation (CHEA).

All the College's academic programs are registered (i.e., approved) by the New York State Education Department.

This school is a nonprofit corporation authorized by the State of Oregon to offer and confer the academic degrees described herein, following a determination that state academic standards will be satisfied under OAR 583-030. Inquiries concerning the standards or school compliance may be directed to the Oregon Office of Educational Policy and Planning at 255 Capital Street NE, Suite 126, Salem, Oregon 97310-1338.

Recognition

The Master of Arts in Liberal Studies program has been accepted into full membership by the Association of Graduate Liberal Studies Programs (AGLSP).

The American Council on Education's College Credit Recommendation Service (ACE CREDIT) has evaluated and made college credit recommendations for Excelsior College Examinations.

The National League for Nursing (NLN) designated the Excelsior College School of Nursing as a 2011–2016 NLN Center of Excellence in Nursing Education in recognition of the College's sustained achievements in creating environments that promote student learning and professional development.

Individual State Registration/Authorization Disclosure

Minnesota: Excelsior College is registered as a private institution with the Minnesota Office of Higher Education pursuant to sections 136A.61 to 136A.71. Registration is not an endorsement of the institution. Credits earned at the institution may not transfer to all other institutions.

Florida: Additional information regarding Excelsior College may be obtained by contacting the Commission for Independent Education, 325 West Gaines Street, Suite 1414, Tallahassee, Florida 32399-0400.

School of Nursing Catalog Addendum

effective January 1, 2012

Important Changes to the School of Nursing Catalog, October 2011 Edition

Admission Requirements

New and Revised Information, page 3

Military Personnel

Effective January 1, 2012, admission to the associate degree in nursing program is limited to military personnel who are on active duty, reserves, or have a discharge date within one year of enrollment into the Excelsior College School of Nursing. See the Undergraduate Application for Admission for a listing of the military occupations that meet the admission criteria.

Registered Nurses

Excelsior College offers a bachelor's in nursing degree program for registered nurses as well as an RN to MS in nursing degree program. These programs are designed for registered nurses who have successfully completed the NCLEX-RN®, have had their learning validated by prior education, and have a current license to practice as a registered nurse in the United States.

New and Revised Information, page 20.

Admissions

The associate degree programs are open to licensed practical/vocational nurses, paramedics, selected classifications of military service corpsmen, and individuals who hold degrees in clinically oriented health care fields in which they have the opportunity to provide direct patient care (e.g., physicians, respiratory therapists, and physician assistants). The necessary documentation, such as copies of licenses, certificates, and official transcripts, must be submitted with the admissions application. The Undergraduate Application for Admission identifies required supporting documentation for admission by each category of applicant as well as additional admission criteria.

Military Personnel

Effective January 1, 2012, admission to the associate degree in nursing program is limited to military personnel who are on active duty, reserves, or have a discharge date within one year of enrollment into the Excelsior College School of Nursing. See the Undergraduate Application for Admission for a listing of the military occupations that meet the admission criteria.

Revised Information, page 36

Registered Nurses

Excelsior College offers a bachelor's in nursing degree program for registered nurses. The program is designed for registered nurses who have successfully completed the NCLEX-RN®, have had their learning validated by prior education, and have a current license to practice as a registered nurse in the United States.

Corrected Information, page 36

First sentence corrected to read:

The Master of Science (MS) in nursing program is open to anyone with a bachelor's degree *from a regionally accredited institution* and an RN license who seeks to obtain an MS in nursing degree with a specialization in Clinical Systems Management, Nursing Education, or Nursing Informatics.

Written English Requirement (WER)

Revised Information, pages 5 and 6

Students are required to demonstrate competence in expository writing in English by completing one of the following for the associate degree and two of the following for the bachelor's degree.

1. Examination

- a. Excelsior College® Examination, **ENGx111 English Composition** (fulfills the requirement for associate and bachelor's degrees)

- b. UExcel® examination, **ENGx110 College Writing** (fulfills the requirement for the associate degrees; partially fulfills the requirement for the bachelor's degrees)
- c. Advanced Placement (AP) English Examinations (fulfills the requirement for the associate and bachelor's degrees)

Note: Excelsior College does not accept the CLEP General Examination in English Composition with Essay toward this requirement.

2. College coursework: Successful completion of one college course (minimum 3 semester- or four quarter-hour credits; minimum grade of C) from one of the following options for the associate degrees, and from two of the following options for the bachelor's degrees:

- a. Expository writing courses such as Excelsior College's **ENG 101 English Composition**, **ENG 201 Writing for the Professions**, or **MLS 500 Graduate Research and Writing** (some restrictions apply).
- b. Two institutionally designated writing-intensive, writing-emphasis courses.
- c. Two applied writing courses. The applied writing courses must focus on different applications of the writing process.

Note: Coursework must be from an English-speaking institution. English as a Second Language courses may not be used to satisfy this requirement.

3. Statement of Equivalency: Submission of an official statement from a regionally accredited institution, from which transfer credit is being accepted, verifying satisfactory completion of the student's writing requirement. The statement must reflect whether the institution had a one-course or two-course writing requirement in effect at the time of the student's matriculation.

4. Noncollegiate-sponsored instruction: Successful completion of a noncollegiate-sponsored instructional writing course or program that has been evaluated by either the NYS Board of Regents National College Credit Recommendation Service (formerly National PONSIS) or the American Council on Education Center for Adult Learning and Educational Credentials (ACE CREDIT), and contains a recommendation of at least 3 semester-hour credits for

the course; this course must contain an actual assessment of the student's competence in expository writing in English.

A maximum of two semester courses or three quarter courses of credit in English composition/freshman English courses will apply toward degree requirements. Courses or examinations used to fulfill the written English requirement may not be used to satisfy the humanities requirement.

Students who have a bachelor's degree (or higher) from a U.S. regionally accredited college/university are exempt. **Students who enroll on or after July 1, 2012, will no longer be able to apply for this exemption and must complete the written English requirement.**

General Updates

Revised Information, page 18

NUR x 299: Clinical Performance in Nursing Examination (CPNE®) Prerequisites

Students are eligible to schedule the CPNE® when they have successfully completed 21 of the required 31 credits in general education, all eight nursing theory examinations, and the FCCASM. *Students may not take the CPNE until the FCCA is complete.* In addition, a criminal background check report is required with submission of the CPNE application. See the *CPNE Study Guide* or our Web site for information about criminal background checks.

Update, page 35

Academy of Medical-Surgical Nurses Certified Medical-Surgical Nurses, 4 credits

is now

Medical-Surgical Nursing Certification Board Certified Medical-Surgical Registered Nurse (CMSRN) 4 credits

Revised Information, page 63

The following paragraph is no longer applicable.

Students who "stop out" of the RN to MS degree in order to be awarded the BS may be required to complete additional credits in nursing electives to ensure that their nursing credits for the bachelor's degree total at least 60. Students who continue without "stopping out" will be awarded the bachelor's and master's degrees upon completion of the entire program.

Contact your academic advisor for program planning assistance.

A Message from the Dean

Dear Student:

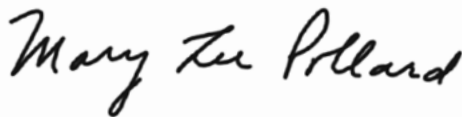
I am pleased that you are taking an important step in achieving your educational and professional goals and the faculty and staff of Excelsior College School of Nursing is here to guide your journey. Our School of Nursing is home to the Tau Kappa chapter of Sigma Theta Tau International Honor Society of Nursing and has been designated as a National League for Nursing (NLN) Center of Excellence in Nursing Education: Creating Environments that Enhance Student Learning and Professional Development, 2005–2008, 2008–2011 and 2011–2016. Being acknowledged by the NLN and identified as a Center of Excellence in Nursing Education not once, but three times, is something we are very proud of and strive to live up to every day!

In addition, we are very dedicated to diversifying the nursing workforce, one of which is serving those traditionally underrepresented in nursing. Our efforts in this area have been recognized in a number of ways. The American Assembly for Men in Nursing presented Excelsior with their Best School Award in 2006, 2007, 2009, and 2011, and *Hispanic Outlook in Higher Education* magazine named Excelsior as a top 20 school for having Hispanic graduates.

As a not-for-profit, private institution of higher education chartered by the New York State Board of Regents, the College is accredited by the Commission on Higher Education of the Middle States Association of Colleges and Schools, one of the oldest and most respected regional accreditors in the United States. All of our nursing programs hold prestigious specialty accreditation by the National League of Nursing Accrediting Commission, which is recognized by the U.S. Secretary of Education.

This catalog describes all of our nursing degree programs in detail. Please take the time to read it carefully along with the *Student Policy Handbook* available on our Web site. I also encourage you to take full advantage of the many learning resources Excelsior College has to offer. We offer a full array of resources, designed and delivered by our nursing faculty and staff, which will be useful as you meet each of your degree requirements.

Best wishes for your success!



Mary Lee Pollard, PhD, RN
Dean, Excelsior College School of Nursing

LIMITATIONS

Information in this catalog is current as of October 2011, and is subject to change without advance notice.

CHANGES IN COLLEGE POLICIES, PROCEDURES, AND REQUIREMENTS

The College reserves the right to modify or revise the admission requirements of any program of the College; degree and graduation requirements; examinations, courses, tuition, and fees; and other academic policies, procedures, and requirements. Generally, program modifications and revisions will not apply to currently enrolled students so long as they actively pursue their degree requirements. However, in the event that it is necessary to make program changes for enrolled students, every effort will be made to give notice. It is also the responsibility of students to keep themselves informed of the content of all notices concerning such changes.

Copyright © 2011 Excelsior College.

"Excelsior College, and "CPNE" are registered service marks of Excelsior College. "FCCA" is a service mark of Excelsior College.

All rights reserved. Unauthorized reproduction or use prohibited.

Printed in the USA, October 2011.

Excelsior College maintains a drug-free workplace and is a drug-free school, as provided by the Federal Drug-Free Schools and Communities Act Amendments of 1989.

Excelsior College does not discriminate on the basis of age, color, religion, creed, disability, marital status, veteran status, national origin, race, gender, or sexual orientation in the educational programs and activities which it operates. Portions of this publication can be made available in a variety of formats upon request. Inquiries should be directed to the Affirmative Action Officer, Excelsior College, 7 Columbia Circle, Albany, NY 12203-5159.

Campus Crime Statistics can be found at the following Web site: <http://ope.ed.gov/security>.

The Excelsior College School of Nursing offers the following degree and certificate programs:

- Associate in Science in nursing
 - Associate in Applied Science in nursing
 - Bachelor of Science in nursing
 - Master of Science in nursing
 - RN to MS in nursing
 - Graduate Certificate in Nursing Management
 - Post-Master's Certificate in Nursing Education
-

At the associate degree level, we are a competency-based distance learning program. Associate degree students without licensure are prohibited from performing many clinical activities in their usual work setting. This is in contrast to students in campus-based instructional programs who can engage in such learning activities under an exempt clause in the Nurse Practice Act. This clause enables them to perform patient care under faculty supervision. Students without a registered nursing license enrolled in Excelsior College are not eligible to practice under this clause, except during the actual administration of the Clinical Performance in Nursing Examination. All students who pursue bachelor's or master's degrees in nursing at Excelsior College have a current license to practice as a registered nurse, and may, therefore, work within the scope of their license while engaging in educational endeavors.



*Our nursing degree programs are specifically designed to serve individuals with significant experience in clinically oriented health care disciplines. While it is possible for some associate degree nursing students to learn the necessary nursing competencies in a learning laboratory and through observation, it is extremely difficult to do so. Students with a limited background in nursing or a related health care discipline are best advised to attend an instructional program. Excelsior College is not associated with, nor does it endorse, any external organization, external firm, or group that provides theoretical and clinical learning opportunities for students. Learning opportunities and resources are provided by the College and are described in the Student Services section of the general information catalog, *Start to Finish*, and on our Web site.*

Excelsior College is home to the Tau Kappa chapter of Sigma Theta Tau International, Honor Society of Nursing.

The School of Nursing has been designated an NLN Center of Excellence three times and is a four-time recipient of the American Assembly for Men in Nursing Best School Award.



The American Assembly for Men in Nursing

The American Assembly for Men in Nursing presented their 2006, 2007, 2009, and 2011 Best School of Nursing award to the Excelsior College School of Nursing.



The National Association of Hispanic Nurses

The Excelsior College is proud to be a corporate sponsor of the National Association of Hispanic Nurses.



Tau Kappa Chapter, Sigma Theta Tau International, Honor Society of Nursing

Tau Kappa, the Excelsior College chapter of Sigma Theta Tau International, Honor Society of Nursing, was originally chartered in July of 2004. It shares the vision of Sigma Theta Tau International—to create a global community of nurses who lead using scholarship, knowledge, and technology to improve the health of the world's people. Eligible baccalaureate or master's degree students are invited for induction. Specific information about the chapter and its activities is available on a link from the Excelsior College Web site.



The Excelsior College School of Nursing has been designated a **Center of Excellence** by the **National League for Nursing for 2005–2008, 2008–2011,**

and 2011–2016. There are more than 1700 schools of nursing in the U.S. and this highly coveted designation distinguishes our school as one of only seven such centers in the nation. Awarded on the basis of a national peer-review process, recognition by the National League for Nursing as a Center of Excellence indicates that the Excelsior College School of Nursing has demonstrated sustained, evidence-based and substantive innovation in creating environments that enhance student learning and professional development, that it conducts ongoing research to document the effectiveness of such innovation, that the School sets high standards for itself, and that we are committed to continuous quality improvement.

Table of Contents

A Message from the Dean i

Excelsior College offers seven programs in nursing iii

Important Information for All Students. vii

The School of Nursing 1

Mission Statement.	1
Goals of the Excelsior College®	1
School of Nursing.	1
Philosophy.	2
Nursing Curricula	2
Organizing Framework for the Nursing Curricula	2
Metaparadigm Concepts: Definitions	2
Supporting Concepts: Definitions	3
Admission Requirements	3
International Student Admission Requirements	4
Time Limits and Average Time for Program Completion	4
Licensure.	5
Criminal Background Checks.	5
Requirements for All Degree Programs	5
The Excelsior College Nursing Pin	6

About Test Preparation and Tutorial Services. 8

Associate Degree Programs in Nursing 9

Associate in Science and Associate in Applied Science	9
Beliefs About the Practice of Associate Degree Nursing	9
Purpose of the Associate Degree Nursing Programs	10
Educational Outcomes	10

Associate Degree Requirements:	
General Education and Nursing	12
General Education Component	12
Associate in Science Degree	12
Associate in Applied Science Degree	14
Nursing Component for Both Associate Degrees in Nursing	15
Meeting Requirements	18
Meeting Specific Requirements.	19
The Theory Examinations.	19
Policies Specific to the Associate Degrees in Nursing.	19
Minimum Academic Average	20
Time Limits	20
Nursing Theory Examinations Policies.	21
FCCA™ and CPNE® Policies	21
Physical Education Courses	22
Waiver of Associate Degree in Nursing Theory Exams	22
Planning for Degree Completion	23
Regional Performance Assessment Centers	23
Learning Resources for AS and AAS Nursing Students	23
Nursing Theory: Online Conferences.	24
Nursing Theory Practice Examinations	24
Clinical Performance in Nursing Examination (CPNE®) Workshop	24
CPNE® Online Conferences	24
Additional CPNE® Learning Resources.	26

Bachelor's Degree Program in Nursing 27

Bachelor of Science in Nursing	27
Beliefs About the Practice of Baccalaureate Degree Nursing	27

Purpose of the Bachelor of Science in Nursing Degree Program	28
Program Outcomes.	28
Bachelor of Science in Nursing Degree Requirements.	30
General Education Component	30
The Requirements	31
Meeting Specific Requirements	32
Nursing Component	32
Certifications Approved for Elective Credit.	35
Policies Specific to the Bachelor of Science Degree in Nursing	35
Admission.	36
Time Limit	36
General Education Component	36
Nursing Component	36
Mathematics Policy	37
Minimum Academic Average	37
Policy on Repeating Nursing Computer-Delivered Examinations	37
Waiver of Excelsior College® Nursing Bachelor's Theory Examinations	37
Excelsior College Examinations	37
Learning Resources for Bachelor's Degree in Nursing Students	38

Graduate Programs in Nursing. . . 39

Master of Science in Nursing	39
Beliefs About Graduate Education	40
Beliefs About Master's-Prepared Nurses.	40
Purpose of the Graduate Program in Nursing	40
<i>Master of Science in Nursing with Specialization in Clinical Systems Management</i>	41
Educational Outcomes	41

<i>Master of Science in Nursing with Specialization in Nursing Education . . . 42</i> Educational Outcomes 43 <i>Master of Science in Nursing with Specialization in Nursing Informatics . 43</i> Educational Outcomes 44 Policies Specific to the Master of Science Degree in Nursing 44 Admission. 45 Time Limit. 45 Course Waiver. 45 <i>Master of Science in Nursing Requirements for the Clinical Systems Management Specialization 46</i> <i>Master of Science in Nursing Requirements for the Nursing Informatics Specialization 49</i> <i>Master of Science in Nursing Requirements for the Nursing Education Specialization 52</i> Graduate Programs in Nursing. . . 56 RN to Master of Science in Nursing Completion Program 56 Policies Specific to the RN to MS in Nursing Program 57 Admission. 57 Time Limit. 57 Course Load Requirement. 58 Minimum Academic Average— Graduate Courses 58 RN to MS in Nursing Requirements. . . 62 General Education Component. 62 Nursing Component 62 Baccalaureate Phase 62 Bachelor's Phase Requirements . . 63 Graduate-Level Phases 63 Certificates in Nursing 64 Graduate Certificate in Nursing Management. 64 Program Outcomes 65 Admission. 65 Required Courses 65 Post-Master's Certificate in Nursing Education 66 Program Outcomes 67 Admission. 67 Required Courses 67 Elective Courses 67 Excelsior College Board of Trustees 68 Excelsior College Executive and Academic Leadership Staff 69 School of Nursing Faculty and Consulting Faculty. 70 New York State Education Department Inventory of Registered Programs. 72
--

Important Information for All Students

Student Policy Handbook

The Excelsior College *Student Policy Handbook* is your resource for understanding the academic and administrative policies that are important to your academic success. It includes a wide range of information from important federal policies, including your right to privacy, to grading policies and policies and procedures concerning refunds, withdrawals, and other administrative issues.

It is your responsibility to be familiar with these policies. The term “students” includes those currently matriculated at Excelsior College taking examinations and/or courses, non-matriculated students taking examinations and/or courses, non-matriculated students in the application process, individuals using the OneTranscriptSM service (formerly Credit Bank), formerly matriculated students currently in withdrawn status, and graduates.

Policies and procedures that apply only to a specific degree program are listed in the appropriate school catalog. You may download a copy of the *Handbook* from our Web site. File your *Handbook* with your other important academic papers and this program catalog for easy reference.

Standardized Testing Participation

Students have a responsibility to participate in standardized tests (an example is the “Proficiency Profile” published by Educational Testing Services) that may be required during the period of their enrollment. These tests may be in addition to regular coursework and are required to gather critical information on achievement of student learning. Students are expected to actively participate and make every effort to do their best on these assessments to produce scores that accurately reflect their abilities. The results from these assessments will not be part of the course grade but are crucial for the purpose of program improvement and are frequently required by regulators and accreditation agencies. Participation in these assessments con-

tributes toward increasing the value of the degree by providing evidence of student learning to external organizations, employers, and the general public.

Excelsior College Web Site

Through the College’s Web site, you have access to a wealth of information to help you succeed as a student. If you haven’t already done so, create a MyExcelsior user account. It will serve as your gateway to a variety of support services and is where you will find up-to-date information tailored to your specific academic program as well as general announcements from the College.

General Education Outcomes for All Undergraduate Degree Programs

Each undergraduate degree program has a strong arts and sciences component designed to help you develop a broad-based understanding of multiple disciplines, provides a breadth of academic experience to enrich your life and allows you to become more informed and engaged as a citizen and a lifelong learner in an increasingly complex and changing world. This arts and sciences component, offered in a delivery model of flexibility, quality, and accessibility that is based on adult learning theory, helps you to integrate knowledge from multiple sources and experiences in diverse ways of knowing. These guiding principles have thus formed the six learning goals for General Education at Excelsior College.

1. **Communication and Oral Expression.** Excelsior students will be able to express themselves effectively in English, both orally and in writing, and with clarity, persuasiveness, and coherence using standard conventions of English.
2. **Mathematics and Scientific Method.** Excelsior students will utilize scientific reasoning and basic mathematical calculations in problem solving in their public discourse.

Important Information for All Students

3. **Information Literacy.** In this age of information proliferation due to rapid technological advances, students will have to learn to discern information critically. They will have to learn to identify the amount and type of information needed, to understand where to locate, effectively access that information, evaluate the source of the information, and use it as per legal and ethical considerations.
4. **Human Thought and Creativity.** Excelsior students will be able to explain, interpret, critique, create, or perform works of human creativity at an informed level.
5. **Diversity and Global Understanding.** Excelsior students will have an understanding and appreciation of the complexities of diversity and will be able to interact effectively with people from backgrounds and cultures different from their own. They will have gained a global perspective that is grounded in the issues, trends, and opportunities that connect nations and communities around the world. They will challenge their own sense of “self” vis-à-vis an understanding of those with different thoughts, beliefs, traditions, behaviors, and understandings.
6. **Social Responsibility and Civic Engagement.** Excelsior students will acknowledge the importance of social responsibility and civic engagement and the behaviors that support these beliefs.

For more information on the General Education goals and outcomes please visit:

www.excelsior.edu/gened

Technology Literacy

Excelsior College Definition of Technology Literacy [Based on State Educational Technology Directors Association (SETDA)]

Excelsior College defines technology literacy as the ability to identify and responsibly use appropriate technology to communicate, solve problems, and access, manage, integrate, evaluate, and create

information to improve learning. This will facilitate the ability to acquire new knowledge for lifelong learning in the 21st-century global workplace.

Baseline Technology Skills and Resources

1. Prior to being admitted to Excelsior College, all students should be knowledgeable in the use of a personal computer (Windows or Macintosh). Entering students should have the ability to
 - use a personal computer,
 - use office automation programs to create, edit, store and print documents,
 - use electronic communication tools, and
 - search and retrieve information from electronic resources to complete assignments and activities.
2. Students must have reliable access to a computer with Internet connectivity.
3. Student's computer and operating system must meet the minimal technical requirements as noted in the Excelsior College Computer System Requirements (www.excelsior.edu/system-requirements).
4. Students must be able to utilize required software applications.
5. Students need to utilize the Excelsior College Web site to access information, resources, and the Message Center, and to participate in activities. See the Excelsior College Electronic Use policy (www.excelsior.edu/electronic-use-policy).
6. Students are required to conduct themselves appropriately and professionally at all times, including online.

The Excelsior College School of Nursing

Mission Statement

The mission of the Excelsior College School of Nursing is to prepare nurses at the associate, bachelor's, and master's levels, whose practice reflects humanistic, ethical, culturally sensitive, technically competent, safe, and scientifically-based care. The programs of study are designed to expand individual horizons, foster commitment to lifelong learning, and assist in the development of intellectual curiosity and respect for inquiry. The School of Nursing strives to increase access to quality nursing education for a diverse and underserved population of adult learners to meet a global society's need for nurses and educated citizens. The three distance education nursing programs employ teaching/learning and rigorous assessment strategies that are efficient, economical, and innovative. The curricula are designed to provide students with opportunities to achieve career goals through seamless transitions progressing along the educational continuum.

The nursing degree programs meet the standards for registration by the New York State Education Department. The programs' curricula are comparable to campus-based instructional programs. In the associate degree programs, the student is able to demonstrate appropriate knowledge and competencies through a variety of evaluation methods including review of credit earned from regionally accredited colleges, completion of nursing theory examinations, and criterion-referenced performance examinations and requirements. In the bachelor's degree program the student is able to demonstrate generalist knowledge and competence through participation in online discussion, assessment of knowledge and experiential learning, evaluation of credit earned from regionally accredited colleges as well as nursing theory examinations and professional certification. In the

master's degree program, the student is able to demonstrate expert/specialty knowledge and skills through participation in online discussion, assessment of knowledge and experiential learning, and evaluation of credit earned from regionally accredited colleges.

Goals of the School of Nursing

1. Maintain national leadership in nursing and distance education and serve as an advocate for innovative and alternative educational models.
2. Contribute to the goal of the College to enhance the student experience thereby ensuring access, success, and satisfaction.
3. Maintain a healthy and diverse work environment in which faculty and staff can grow and develop intellectually and professionally.
4. Sustain the School as a Center of Excellence in Nursing Education with an environment that develops students' values, socializes them to new roles and creates a commitment to lifelong learning.
5. Expand and enhance learning support services that are responsive to students' needs and reflect best practices.
6. Provide evidence-based, high-quality, rigorous, learner-centered academic programs.
7. Provide flexible, dynamic curricula with sound objective assessments that assure achievement of learning outcomes.

Philosophy

The School of Nursing community believes that nursing is a scientific discipline with a distinct body of knowledge. Nursing uses this knowledge along with knowledge from other disciplines to shape and inform practice. Nurses engage with clients in a dynamic partnership and come to know them as holistic beings. The nurse-client relationship reflects dignity, valuing, and respect for personhood. The focus of nursing is with individuals, families, aggregates, communities, and systems. Health is the actualization of human potential and is manifested uniquely in multidimensional and dynamic patterns and processes across the life span in response to changes in the environment. Environment, both external and internal, provides the context within which nurse-person interaction and health occur. These paradigmatic beliefs guide nursing practice and underpin nursing knowledge development and discovery.

The faculty is committed to an educational philosophy that emphasizes competency assessment and learning at a distance. The faculty supports programs that are designed to meet the educational goals of a diverse population of adult learners who bring varied lifelong knowledge and experience to the learning encounter. The faculty views adult independent learning as a process of knowledge acquisition attained through exposure to varied planned educational strategies unconstrained by time and/or place. The faculty believes that curricula are best designed using consensus-building by a national faculty of content experts, master educators, and clinicians who make curricular decisions based on principles of adult learning, internally generated data, and evidence of best practice in nursing education. The faculty believes that knowledge related to adult learning and assessment of competence can be applied to support the concepts of both external and distance nursing education.

The faculty is responsible for determining what must be learned; how learning can be supported; and how learning is assessed. The faculty believes that adult learners have the capability to create their own learning experiences guided by each program's curricular framework. The ability to learn, readiness to learn, motivation to learn, and responsibility to

learn are seen as characteristics of the adult learner rather than of the faculty or the educational institution providing the degree.

The faculty believes that society's health care needs can be served by nurses with different levels of education. Therefore, the Excelsior College School of Nursing offers associate, bachelor's, and master's degree programs and learners have the opportunity to seek the educational level most suited to their needs and prior preparation.

Nursing Curricula

Organizing Framework for the Nursing Curricula

The organizing framework consists of nine interrelated concepts that direct delivery of the curriculum at each level—AD, BS, and MS. They include the four metaparadigm concepts of nursing, client, health and environment supported by concepts of critical thinking, communication, research, role development, and caring/cultural competence. The faculty believes that the metaparadigm concepts underpinned by the supporting concepts represent concepts critical to the practice of nursing at each level of practice addressed in the Excelsior College nursing programs and that those concepts serve as a foundation to nursing education. Each is evident and operationalized throughout each of the curricula and is reflected in the educational program objectives.

Metaparadigm Concepts: Definitions

Health

Defined at all levels as the actualization of human potential.

Nursing

Defined at the associate-degree level as engaging with clients in dynamic partnerships and coming to know them as holistic beings reflecting dignity, values, and respect for personhood in three roles: provider of care, manager of care, and member of profession. At the bachelor's level, nursing is defined

as coordinating and providing care for clients with multiple, complex, and variable health care problems to promote, protect, and restore health and support end of life care. At the master's level, nursing is defined as applying specialty knowledge to engage in clinical reasoning and decision making.

Environment

Environment, both internal and external, is defined at all levels as providing a context within which nurse-client interaction and health occur.

Client

Defined at the associate-degree level as the individual within the context of the family. At the bachelor's level, client includes individuals, families, aggregates, and communities. At the master's level client is defined as individuals, families, aggregates, communities, and systems.

Supporting Concepts: Definitions

Critical Thinking*

The intellectually disciplined process of conceptualizing, applying, analyzing, synthesizing, and evaluating information gathered from varied sources including observation, experience, reflection, reasoning, communication, and other data sources to inform decision making.

Communication

A verbal, non-verbal, process of interactive exchange with others used to demonstrate caring and to receive, process, and send information, thoughts, ideas, and feelings.

Research

A process of scientific inquiry leading to state-of-the-discipline knowledge that can be used as evidence to inform nursing practice.

Role Development

Dynamic professional socialization into the three broad roles of nursing practice: *Provider of Care*, *Manager of Care*, and *Member of Profession*. In these roles, the professional nurse demonstrates knowledge, skills, values, and competencies necessary for nursing practice.

Caring and Cultural Competence

Patterns of nurse-client interactions that are characterized by sensitivity to and respect for human/person values, experiences, and cultures.

Admission Requirements

All prospective nursing students must submit an application for admission to the School of Nursing. Each program has admission requirements. The associate degree programs are open to licensed practical/vocational nurses, paramedics, selected classifications of military service corpsmen, and individuals who hold degrees in clinically oriented health care fields in which they have had the opportunity to provide direct patient care (e.g., physicians, respiratory therapists, and physician assistants). The necessary documentation, such as copies of licenses, certificates, and official transcripts must be submitted with the admissions application. The Undergraduate Application for Admission identifies required supporting documentation for admission by each category of applicant as well as additional admissions criteria.

The Bachelor of Science in nursing and RN to MS in nursing degree programs are open to students who have successfully completed the National Council Licensure Examination for Registered Nurses (NCLEX-RN®) and have a current license to practice as a registered nurse.

Admission to the MS in nursing program is open to anyone who has earned a bachelor's degree in any field from a regionally accredited institution and who is licensed to practice as a registered nurse.

* Adapted from Scriven & Paul 1987.

International Student Admission Requirements

Admission to the associate degree in nursing programs is not open to international students. For the bachelor's and master's programs, in addition to official transcripts, nursing candidates must demonstrate that they have an equivalent U.S. Registered Nurse (RN) license. To be eligible for admission, the applicant must be a graduate from an approved school of nursing in their country of education and hold a current, unencumbered nursing license (if licensed in multiple jurisdictions and/or countries, all licenses must be unencumbered). All nursing school transcripts and all licenses will be validated by primary source verification. International candidates must apply to the Commission on Graduate of Foreign Nursing Schools (CGFNS) New York Credential Verification Service (NYCVS) and the New York State Education Department (NYSED) to have their foreign nursing education evaluated and approved by the aforementioned organizations.

Detailed application information and instructions can be found in the applications for admission.

English Language Proficiency Requirement

International candidates from non-English speaking countries must show evidence of sufficient English language proficiency through one of the following options:

1. Submission of TOEFL (Test of English as a Foreign Language) or IELTS (International English Language Testing System) taken within the last two years.
2. Successful completion of Excelsior College's **ENGx111: English Composition** examination or **ENGx110: College Writing** examination.
3. Submission of evidence of the successful completion of at least nine credit hours of academic work in courses delivered in English at an institution of higher education in the United States.

Time Limits and Average Time for Program Completion

All of Excelsior College nursing degree programs are designed to be completed at the students own pace, but must be completed within a specified period of enrollment. Time limits on enrollment are cumulative if enrollment is not continuous. Students who do not meet the time limit for program completion are subject to dismissal from the School of Nursing. The faculty recognize that the time limits are generous and believe they are appropriate because the students served by the College are working adults.

Associate degree in nursing

Students have seven years to complete the associate degree in nursing programs. The average time to completion for part-time students is three years.

Bachelor's degree in nursing

Students have seven years to complete the RN to bachelor's degree in nursing program. The average time to completion for part-time students is five years.

Master's degree in nursing

Students have seven years to complete the RN to master's degree in nursing program. The average time to completion for part-time students is four years.

Registered Nurse to Master of Science in nursing completion program

Students have 12 years to complete the RN to MS in nursing program. The average time to completion for part-time students is six years.

Licensure

Excelsior College nursing programs are designed in accordance with the requirements for Registered Nurse programs in New York State. The associate degree programs prepare students for the National Council Licensure Examination for Registered Nurses (NCLEX-RN®) for practice in the United States. Excelsior College graduates who meet eligibility requirements are eligible to take the NCLEX-RN® in New York State.

Our graduates are eligible for licensure in most other states by examination or endorsement. However, states may have different requirements for pre-licensure education; students are responsible for determining the legal criteria for licensure in the state where they wish to practice. Some states have special licensure requirements for our graduates. Graduation from a registered and accredited program does not guarantee eligibility for licensure; students may also need to meet other requirements regarding age, high school graduation, type of education, and so forth.

If the state in which you wish to be licensed is part of the national compact for licensure, ask about those specific requirements.

You must contact the state board of nursing in the state where you wish to practice for information about the specific licensure requirements for that state.

Excelsior College graduates who are licensed as RNs in one state may be employed as RNs by Veterans Administration institutions or other federal facilities anywhere in the United States.

Individuals convicted of felonies or certain misdemeanors or individuals with a history of substance abuse may not be eligible for licensure or eligible to take the required performance examinations for the Excelsior College nursing degree.

Note: You are encouraged to obtain a copy of the NCLEX-RN® Test Plan for the National Council Licensure Examination for Registered Nurses from the National Council of State Boards of Nursing, Inc., 676 N. St. Clair St., Suite 550, Chicago, IL, 60611-2921. <http://www.ncsbn.org>

Criminal Background Checks

All students enrolled in an associate degree in nursing program must complete a criminal background check prior to applying to take the Clinical Performance in Nursing Examination (CPNE®). See the *CPNE Study Guide* or the Excelsior College Web site for detailed information about the purpose of the background check, process for obtaining the check, and submission of records with your CPNE application.

Requirements for All Degree Programs

Written English Requirement (WER)

The Excelsior College degree programs in nursing, at both the associate and bachelor's levels, include a requirement in written English. Students must demonstrate competency in expository writing in English in one of the following ways:

1. Successful completion of an approved college-level proficiency examination such as the Excelsior College® Examination in **[ENGx111 English Composition]**, **[ENGx101 College Writing]**, or the Advanced Placement (AP) English Examination.

Note: Excelsior College does not accept the CLEP General Examination in English Composition with Essay toward this requirement.

2. Successful completion of college course work (courses must be minimum 3 semester hours or 4 quarter hours of credits; minimum grade of C) from one of the following options:
 - a. One-semester expository writing course

- b. Two institutionally designated writing-intensive, writing emphasis courses
 - c. Two applied writing courses, which must focus on different applications of the writing process
3. Submission of an official statement of proficiency from a regionally accredited degree granting institution, from which transfer credit is being accepted, verifying satisfactory completion of its writing requirement.
 4. Completion of a noncollegiate sponsored instruction course or program on writing that has been evaluated by either the New York State Board of Regents National Program on Noncollegiate Sponsored Instruction (National PONSI) or the American Council on Education (ACE) College Credit Recommendation Service of the Center for Adult Learning and Educational Credentials; is recommended for at least 3 semester hours of credit; and contains an actual assessment of competence in expository writing in English.

Note: Students who have earned a bachelor's degree (or higher) from a regionally accredited U.S. institution are exempt from this requirement. In such cases, degree credit is not awarded and you will need to complete the required number of arts and sciences credits as outlined in the nursing degree program.

Excelsior College Nursing Pin

Excelsior College has a nursing school pin available to all graduates of the nursing programs. The pin features a reproduction of the Excelsior College logo. The nursing pin is a symbol of accomplishment, knowledge, and competence in nursing. Students will be notified that they are eligible to purchase a pin when they complete their degree program.



Examinations or courses used to fulfill the written English requirement may not be used to satisfy the humanities distribution requirement of an Excelsior College degree. All course work must be from an English-speaking institution. An English as a Second Language (ESL) course may not be used to satisfy the written English requirement. A maximum of 6 semester hours of credit in English Composition/Freshman English will apply toward degree requirements

Following are examples of one-semester courses (3 semester hours) that will satisfy the written English requirement:

English Composition	Introduction to Writing
Thesis Writing	College Writing
Freshman Composition	Expository Writing I
Effective Writing	

Information Literacy

Students are expected to demonstrate competency in information literacy. The standards, performance indicators, and outcomes for this requirement were selected from the Association of College and Research Libraries (ACRL) Information Literacy Competency Standards for Higher Education. Competency will be assessed through a one-credit pass/fail course offered online by Excelsior College or through successful completion of a course taken at a regionally accredited college covering comparable content.

Courses in information literacy will be considered for transfer if they were completed within five years of the date of the current enrollment in Excelsior College. Students who have completed a U.S. master's degree or higher from a regionally accredited or otherwise approved source of credit or who have earned a degree from an institution outside the U.S. deemed equivalent to a U.S. master's degree or higher by the College's international credential evaluators may be exempt from the information literacy requirement if the degree was earned within five years prior to enrollment at Excelsior. Excelsior

College's **MLS 500 Graduate Research and Writing** course will satisfy the requirement if taken within five years prior to the current enrollment.

The information literate student will be able to

- determine the nature and extent of the information needed.
- access needed information effectively and efficiently.
- evaluate information and its sources critically.
- incorporate selected information into his or her knowledge base and value system.
- understand many of the economic, legal, and social issues surrounding the use of information.
- access and use information ethically and legally.

Students seeking additional information should check the Excelsior College Web site or consult with an academic advisor.

Mathematics Policy

No more than three courses in the semester-hour system (four courses in the quarter-hour system) of college-level mathematics below the level of calculus can be applied toward degree requirements. Credit from courses listed as developmental or remedial cannot be applied toward degree requirements.

Your Personalized MyExcelsior Account:

www.excelsior.edu/MyExcelsior

Admissions: toll free 888-647-2388, ext. 27

College Publications, Applications, and Forms:

www.excelsior.edu/publications

Student Policy Handbook:

www.excelsior.edu/StudentPolicyHandbook

Fee Schedules, Financial Aid, and Scholarships:

www.excelsior.edu/fees

www.excelsior.edu/FinancialAid

www.excelsior.edu/scholarships

Excelsior College Learning Resources:

www.excelsior.edu/library

www.excelsior.edu/bookstore

www.excelsior.edu/MyExcelsior, click on the Resources tab

Student Online Success Guide

www.excelsior.edu/SuccessGuide

Excelsior College Online Writing Lab (OWL):

www.excelsior.edu/OWL

Free Writing Resources (*scheduled to debut Fall 2011*),
Online Software Skills Training through Atomic Learning
(*EC course and exam registrants only*),

Online Tutoring Services through SMARTHINKING™
(*EC course and exam registrants only*)

www.excelsior.edu/MyExcelsior, click on the Resources tab

Excelsior College Community Resources:

www.excelsior.edu/MyExcelsior, click on Communities tab

About Test Preparation and Tutorial Services

Preparation for Excelsior College® Examinations, though based on independent study, is supported by Excelsior College with a comprehensive set of exam learning resources and services designed to help you succeed.

These learning resources are prepared by Excelsior College so you can be assured that they are current and cover the content you are expected to master for the exams. These resources, and your desire to learn, are usually all that you will need to succeed.

There are test-preparation companies that will offer to help you study for our examinations. Some may imply a relationship with Excelsior College and/or make claims that their products and services are all that you need to prepare for our examinations.

Excelsior College is not affiliated with any test preparation firm and does not endorse the products or services of these companies. No test preparation vendor is authorized to provide admissions counseling or academic advising services, or to collect any payments, on behalf of Excelsior College. Excelsior College does not send authorized representatives to a student's home.

Depending upon your individual learning style and needs, you may consider using the services and products of a test preparation vendor to help you prepare for an Excelsior College Examination. Some students have found such materials beneficial while others have not. The decision to purchase the services and products of any of these vendors is entirely up to you.

Excelsior College does not review the materials provided by test preparation companies for content or compatibility with Excelsior College® Examinations.

To help you become a well-informed consumer we suggest that you consider the following before making any purchase decision regarding study materials provided by organizations other than Excelsior College.

Does the company:

- Clearly articulate that it is an independent business enterprise, separate from Excelsior College, and that it is not a degree granting institution?
- Clearly inform you that the products and services it provides have not been reviewed, nor are they endorsed, by Excelsior College?
- Openly indicate that it is not an agent of Excelsior College, that it is not authorized to provide admissions counseling or academic advising regarding Excelsior's degree requirements, and that all its costs and fees are separate from those you will pay to the College?
- Have a record of unresolved complaints/disputes with consumer protection agencies, nursing boards, attorneys general offices, or other similar organizations?
- Require clients to commit to long-term, binding contracts to access its products and services?
- Provide data to substantiate the satisfaction of its clients with its products and services?

www.excelsior.edu/testprep

Important: It is important for you to keep us informed of your current contact information, so we can reach you. You can update your address, phone numbers, fax number and email preference on our Web site, through your MyExcelsior user account, or you can call us with this information.

[www.excelsior.edu/
myexcelsior](http://www.excelsior.edu/myexcelsior)

Associate Degree Programs in Nursing

Associate in Science and Associate in Applied Science

Beliefs About the Practice of Associate Degree Nursing

The faculty believes that the practice of nursing at the associate degree level is well-defined through three complementary and interrelated nursing practice roles: provider of care, manager of patient care, and member of the profession. Nursing at the associate degree level is practiced in a variety of settings characterized by well-established policies, procedures, and protocols. Associate degree nursing practice requires a knowledge base that emphasizes facts, concepts, principles, theories, verified observations, critical thinking, and humanistic values. Associate degree nurses use the nursing process to meet the physiological, psychological, social, cultural, spiritual, and rehabilitative needs of clients. The focus/scope of practice for associate degree nurses is on the care of clients who are individuals or members of a family. Associate degree nurses care for clients whose adaptations and resources lead to an expected response to health problems. As providers of care, associate degree nurses deliver quality care, which assists in restoring and maintaining optimal health. As managers of patient care, associate degree nurses communicate and collaborate with other members of the health care team and with clients and their families to assure quality outcomes across the continuum of care. As members of the profession, associate degree nurses function as patient advocates within ethical and legal parameters and are accountable to society and to the profession for their practice.

Purpose of the Associate Degree Nursing Programs

The purpose of the Excelsior College associate degree nursing programs is to provide an alternative educational approach to earning an associate degree in nursing. The student's qualifications as a learned individual and a competent member of the nursing profession are documented through an objective assessment program in general education and nursing education designed to promote

- proficiency in the practice of associate degree nursing.
- a sense of social responsibility and personal fulfillment by emphasizing the need for students to evaluate their own learning and potential achievements in terms of professional relevance and personal goals.
- a foundation for lifelong learning.

Educational Outcomes

1. Applies analytic reasoning and problem solving skills, using principles, concepts, and theories from the natural and social sciences to choose among alternative solutions to make clinical decisions.
2. Uses multiple strategies of communication to express self, convey caring, and establish collaborative partnerships with clients* and health care providers.
3. Participates in problem identification, assists in data collection, and uses interpreted research findings to plan and implement care.

4. In the role of **provider of care:**

Uses knowledge and skills to apply the nursing process to care for clients* in a variety of settings to restore and maintain health or provide end-of-life care.

Uses a holistic approach to prioritize and evaluate care delivered to clients* across the continuum of the complex health care environment using established nursing standards and protocols.

In the role of **manager of care:**

Identifies scope of practice for members of the health care team. Appropriately delegates and manages individuals to deliver care in a variety of settings.

In the role of **member of profession:**

Practices within the ethical, legal, and regulatory frameworks of nursing and standards of professional nursing practice.

Articulates the contributions of professional nursing to health care.

Advocates for the rights of clients and members of the profession of nursing.

5. Demonstrates a pattern of human-centered behaviors by maintaining an environment that signifies caring, sensitivity, and cultural competence with others.

* client: individual within the context of the family.



CHART 1

Associate in Science and Associate in Applied Science Degrees in Nursing

Total Degree Credits Required: 67

AS | AAS

General Education Requirements

Credit Hours

Written English Requirement

3

Information Literacy

1

Humanities

Humanities Requirement

6

Total Humanities

6

Social Sciences

Life Span Developmental Psychology

3

Sociology Requirement

3

Total Social Sciences

6

Natural Sciences and Mathematics

Human Anatomy and Physiology^①

4

Microbiology

3

Mathematics

2

Total Natural Sciences and Mathematics

9

AS ONLY

Arts & Sciences Electives^②

6

AAS ONLY

Free Electives/Arts & Sciences^③

6

Total General Education

31

Nursing Component

Credit Hours

NURx214 Transition to the Registered Professional Nurse Role

3

NURx104 Essentials of Nursing Care: Health Safety

3

NURx105 Essentials of Nursing Care: Health Differences^{④⑥}

3

NURx106 Essentials of Nursing Care: Chronicity^④

3

NURx107 Essentials of Nursing Care: Reproductive Health^④

3

NURx211 Health Differences Across the Life Span 1^④

3

NURx212 Health Differences Across the Life Span 2^④

3

NURx213 Health Differences Across the Life Span 3^④

3

NURx274 Focused Clinical Competencies Assessment (FCCASM)^⑦

4

NURx299 Clinical Performance in Nursing Examination^⑤

8

Total Nursing

36

① The Human Anatomy and Physiology requirement can also be met by: Anatomy (2 credits) and Physiology (2 credits).

② The Associate in Science Degree accepts a minimum of six credits of Arts & Sciences Electives.

③ The Associate in Applied Science Degree accepts a minimum of six credits of Free Electives or Arts & Sciences Electives.

④ Excelsior College Exams available only to students enrolled in our School of Nursing.

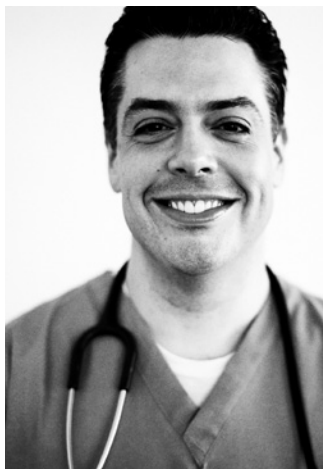
⑤ This examination may be taken only after all 8 nursing theory examinations and the FCCASM are successfully completed.

⑥ The examination in Essentials of Nursing Care: Health Differences can be waived if you hold a valid and current U.S. LPN/LVN license and have demonstrated success on the NCLEX-PN within five years prior to enrollment in the School of Nursing. Submit a copy of your LPN/LVN license so that your academic advisor can validate your license and award you credit for this examination.

⑦ Students are eligible to take this requirement when all 8 of the nursing theory examinations and 21 of the required 31 credits in general education are successfully completed.

Associate Degree Requirements: General Education and Nursing

Both the Associate in Science and the Associate in Applied Science require a total of **67** credits — **31** in general education and **36** in nursing. The two degrees have identical nursing component requirements, but they differ in their general education requirements. Chart 1 (p. 11) offers a visual representation of the AS and AAS programs.



You are subject to the degree requirements in effect at the time of your enrollment or program/degree transfer (program transfer refers to change from one school to another; degree transfer refers to changing degrees within the same school).

The faculty reserves the right to make changes in curricular requirements as necessary to reflect current professional practice. Changes may affect both enrolled and prospective students. It is your responsibility to keep informed of such changes. We make every effort to inform you of changes as they occur. Current information about degree requirements is posted on our Web site. Information about changes to degree requirements is also made available on our Web site.

General Education Component

31 credits

The general education requirements ensure that you develop basic college-level competence in the arts and sciences areas (humanities, social sciences/history, and natural sciences/mathematics) as well as the ability to express yourself in writing, read analytically, and think critically.

The study of the arts and sciences is an essential part of the preparation of a college graduate in that such study helps develop both knowledge in the discipline and an intellectual approach to problem solving. For a complete list of general education outcomes, see page vii.

Note: Throughout this catalog the term “credits” is used to indicate semester hours. Quarter hours are converted to semester hours by multiplying quarter-hour values by two thirds.

Associate in Science Degree

Thirty of 31 required general education credits must be earned in the arts and sciences. One credit must be earned in information literacy. Credits must be distributed as follows:

1. Information Literacy: Students are expected to demonstrate competency in information literacy. This requirement provides a broad overview of information literacy concepts. Please see Information Literacy on page 6 for more information.

The Excelsior College INL 102: Information Literacy online course meets this requirement.

Register at www.excelsior.edu/courses.

2. Written English Requirement: Three credits are required in expository writing which may be at the freshman level. (See Written English Requirement on page 5 for specific details.)

The Excelsior College Examination, [ENGx111 English Composition], meets this requirement. A comprehensive guided learning package is available for the English Composition examination.

- 3. Humanities Requirements:** The humanities requirements are designed to help you learn to read critically, reason well, think logically and critically, and express aesthetic appreciation.

A minimum of 6 credits must be earned in subjects such as art (e.g., appreciation, history, or studio), English, ethics, literature, music, philosophy, religion, theater, speech, and foreign languages (e.g., technical writing).

Within the humanities distribution, students are required to complete a minimum of 3 credits in a humanities subject other than English composition or expository writing. One introductory, applied, or professional writing course beyond the written English requirement may apply to the humanities distribution.

The following Excelsior College® Examinations will fulfill the humanities requirement: [MUSx101 Introduction to Music, HUMx310 Bioethics: Philosophical Issues, PHlx310 Ethics: Theory & Practice, and RELx310 Religions of the World].

- 4. Social Sciences/History Requirements:** This requirement is designed to provide you with a better understanding of people and society and the processes that individuals use to order their world. Studies of Western and other cultures are encouraged.

A minimum of 6 credits must be earned in subjects such as sociology, psychology, anthropology, history, geography, political science, and economics.

Within the social sciences/history distribution, students are required to complete the life span developmental psychology and sociology requirements.

The following Excelsior College Examination meets the life span developmental psychology requirement: [PSYx210 Life Span Developmental Psychology].

The following Excelsior College Examination meets the sociology requirement: [SOCx310 Foundations of Gerontology].

Note: Some state boards have specific requirements regarding the above-listed areas of study. Please be sure to check the licensure requirements in the state of your choice when planning your degree program.

- 5. Natural Sciences/Mathematics Requirements:** The natural science/mathematics requirement is designed to provide you with the scientific background essential to nursing practice and an understanding of the natural world as well as teach you problem-solving skills.

Within the natural sciences/mathematics distribution, students are required to complete 9 credits. This must include human anatomy and physiology (minimum 4 credits), college-level mathematics (minimum of 2 credits), and microbiology (minimum 3 credits) requirements.

A combined human anatomy and physiology course must include all major body systems and must be at least 4 credits. Survey courses are not acceptable.

Note: Some state boards require that students complete a laboratory component for the science courses in order to meet licensure requirements. You should check the licensure requirements in the state of your choice when planning your degree program.

School of Nursing Enrolled Students and
Nursing Content Exams Questions:
888- 647-2388, ext. 1314

Excelsior College Course and Exams
Information and Registration:
www.excelsior.edu/courses
www.excelsior.edu/exams
www.excelsior.edu/CourseSearch

Course/Exam Approval:
www.excelsior.edu/MessageCenter

6. Arts and Sciences Electives: An additional 6 credits are needed to satisfy general education requirements in the arts and sciences. These 6 credits may be distributed among the humanities, social sciences/history, and natural sciences/mathematics areas described above. You are encouraged to consider your interests carefully and to select subjects that complement your professional or personal interests. For example, if you are interested in working with elderly clients you could complete examinations or courses in gerontology and the psychology of aging; or if you are interested in ethical issues, you might consider completing study in ethics, values, and philosophy. If you have a strong interest in the arts, you could study music, drama, or art. You are also encouraged to study a foreign language so you can communicate better with clients from other cultures. Always consult your advisor before registering for any examination or course.

Associate in Applied Science Degree

Of the 31 required general education credits, at least 24 must be earned in the arts and sciences. Of the remaining 7 credits, 1 credit must be earned in information literacy and the other 6 credits must be earned in any academic area other than nursing or physical education. If you have a degree in another applied field such as education, health, business, social work, or respiratory therapy, you may find that the Associate in Applied Science in nursing allows you to apply more transfer credit toward the general education component.

1. Information Literacy: Students are expected to demonstrate competency in information literacy. This requirement provides a broad overview of information literacy concepts. (See Information Literacy on page 6 for more information.)

The Excelsior College **INL 102: Information Literacy** online course meets this requirement.

2. Written English Requirement: Three credits are required in expository writing which may be at the freshman level. (See the Written English Requirement section on page 5 for specific details.)

The Excelsior College Examination, **[ENGx111 English Composition]**, meets this requirement. A comprehensive guided learning package is available for the English Composition examination.

3. Humanities Requirements: The humanities requirements are designed to help you learn to read critically, reason well, think logically and critically, and express aesthetic appreciation.

A minimum of 6 credits must be earned in subjects such as art (e.g., appreciation, history, or studio), English, ethics, literature, music, philosophy, religion, theater, speech, and foreign languages.

Within the humanities distribution, students are required to take a minimum of 3 credits in a humanities subject other than English composition or expository writing. One introductory, applied, or professional writing course beyond the written English requirement may apply to the humanities distribution.

The following Excelsior College® Examinations will fulfill the humanities requirement: **[MUSx101 Introduction to Music, HUMx310 Bioethics: Philosophical Issues, PHIX310 Ethics: Theory & Practice, and RELx310 Religions of the World]**.

4. Social Sciences/History Requirements: This requirement is designed to provide you with a better understanding of people and society and the processes that individuals use to order their world. Studies of Western and other cultures are encouraged.

Within the social sciences/history distribution, students are required to complete the life span developmental psychology and sociology requirements.

The following Excelsior College examination meets the life span developmental psychology requirement: **[PSYx210 Life Span Developmental Psychology]**.

The following Excelsior College examination meets the sociology requirement: **[SOCx310 Foundations of Gerontology]**.

Note: Some state boards have specific requirements regarding the above-listed areas of study. Please be sure to check the licensure requirements in the state of your choice when planning your degree program.

5. Natural Sciences/Mathematics Requirements:

The natural sciences/mathematics requirement is designed to provide you with the scientific background essential to nursing practice and an understanding of the natural world as well as teach you problem-solving skills.

Within the natural sciences/mathematics distribution, students are required to complete 9 credits of natural sciences supportive of nursing that will include the human anatomy and physiology (minimum 4 credits), microbiology (minimum 3 credits), and college-level mathematics requirements.

A combined human anatomy and physiology course must include all major body systems and must be at least 4 credits. Survey courses are not acceptable.

Note: Some state boards require that students complete a laboratory component for the science courses in order to meet licensure requirements. You should check the licensure requirements in the state of your choice when planning your degree program.

6. Applied Professional/Arts and Science Electives:

The additional 6 credits may be earned in any of the above arts and sciences areas or in other college-level subjects such as health, business, computer science, counseling, education, and/or nutrition. Credit from associate-level nursing courses, physical education activity courses, and courses listed as remedial or developmental cannot be used to satisfy general education degree requirements.

Nursing Component for Both Associate Degrees in Nursing

36 credits

The nursing component is designed to ensure that you possess competence in theory and performance in nursing comparable to the competence of graduates of campus-based associate degree nursing programs. Emphasis is placed on the integration of nursing knowledge and related sciences in the care of people who have common recurring health problems with predictable outcomes.

The two Excelsior College associate degree programs have identical nursing component requirements. In order to satisfy the 36-credit nursing component requirement, students must pass eight nursing theory examinations, the Focused Clinical Competencies Assessment (FCCASM), and the Clinical Performance in Nursing Examination (CPNE[®]).

The content of the eight nursing theory examinations corresponds to that which is typically included in the curricula of associate degree nursing programs at accredited community colleges. The examinations assess essential knowledge of medical, surgical, maternity, pediatric, and psychiatric nursing as integrated with knowledge related to growth and development, nutrition and pharmacology, ethical and legal issues, and the arts and sciences. The passing score for the Excelsior College nursing theory examinations is a scaled score, which is equivalent to a C grade. Three credits will be awarded for each successfully completed exam.

The FCCASM is a computer-delivered, simulated clinical assessment with three components: Head to Toe Assessment and Nursing Process, Managing Multiple Patients, and Participating in Interdisciplinary Health Care Teams. You are eligible for the FCCA when you have successfully completed all of the nursing theory examinations. Four credits are awarded upon successful completion of all three components. The FCCA is graded as a Pass or Fail.

The CPNE® is a criterion-referenced performance assessment administered in the acute care environment. The CPNE is an assessment of clinical competencies focusing on your ability to identify, plan for, and meet a variety of nursing care needs for adult and pediatric patients with common health problems. Critical thinking skills and caring behaviors needed to provide and manage care for patients are also assessed. The CPNE is graded as a Pass or Fail.

A description of each nursing theory examination, the FCCASM, and the CPNE follows.

NURx214: Transition to the Registered Professional Nurse Role 3 credits

This examination tests concepts and principles related to the professional role development of the Registered Nurse. Emphasis is placed on supervisory and delegation functions of RN practice as well as differentiating levels of RN practice. In addition, the examination tests factors affecting the health care system, knowledge and skills necessary for functioning on interdisciplinary teams, legal, ethical, and educational aspects of nursing as well as the influences of history, nursing organizations, and regulatory bodies on nursing practice.

There are online programs to assist the student prepare for the theory exams.

NURx104: Essentials of Nursing Care: Health Safety 3 credits

This examination tests the student's ability to apply concepts and principles related to *medication safety*, *physical safety*, *emotional safety*, and *environmental safety*. In addition, application of the nursing process to care for patients across the life span who are responding to common health needs related to *health promotion*, *wellness*, and *self-responsibility* is tested.

The examination requires the student to use the nursing process as a framework for critical thinking and clinical decision making. Evidenced-based nursing care and standards for nursing practice as well as ethical, legal, and regulatory concerns are addressed. In addition, students are required to

apply principles, concepts, and theories from nursing science as well as the natural and social sciences, and the humanities to the practice of nursing.

NURx105: Essentials of Nursing Care: Health Differences 3 credits

This examination tests the student's ability to apply concepts and principles relevant to the nursing care of patients across the life span with common health differences related to *nutrition*, *elimination*, *oxygenation*, *fluid and electrolyte balance*, *rest and activity*.

The examination requires the student to use the nursing process as a framework for critical thinking and clinical decision making. Evidenced-based nursing care and standards for nursing practice as well as ethical, legal, and regulatory concerns are addressed. In addition, students are required to apply principles, concepts, and theories from nursing science as well as the natural and social sciences, and the humanities to the practice of nursing.

NURx106: Essentials of Nursing Care: Chronicity 3 credits

This examination tests the student's ability to apply concepts and principles relevant to the nursing care of patients across the life span in community settings who are experiencing *chronic illness*, *disability*, or *end of life*, with primary health concerns including, *comfort*, *pain*, and *sensory impairment*.

The examination requires the student to use the nursing process as a framework for critical thinking and clinical decision making. Evidenced-based nursing care and standards for nursing practice as well as ethical, legal, and regulatory concerns are addressed. In addition, students are required to apply principles, concepts, and theories from nursing science as well as the natural and social sciences, and the humanities to the practice of nursing.

**NURx107: Essentials of
Nursing Care: Reproductive Health 3 credits**

This examination tests concepts and principles related to the application of the nursing process to care for patients across the life span with nursing care needs related to *human sexuality, congenital anomalies, genetic disorders, and reproductive disorders*. In addition, this examination tests the student's ability to *care for the childbearing family*.

The examination requires the student to use the nursing process as a framework for critical thinking and clinical decision making. Evidenced-based nursing care and standards for nursing practice as well as ethical, legal, and regulatory concerns are addressed. In addition, students are required to apply principles, concepts, and theories from nursing science as well as the natural and social sciences, and the humanities to the practice of nursing.

**NURx211: Health Differences
Across the Life Span 1 3 credits**

This examination tests concepts and principles related to the application of the nursing process to care for patients across the life span who are experiencing health differences related to *cardiovascular and respiratory illness, or abnormal cell growth*.

The examination requires the student to use the nursing process as a framework for critical thinking and clinical decision making. Evidenced-based nursing care and standards for nursing practice as well as ethical, legal, and regulatory concerns are addressed. In addition, students are required to apply principles, concepts, and theories from nursing science as well as the natural and social sciences, and the humanities to the practice of nursing.

**NURx212: Health Differences
Across the Life Span 2 3 credits**

This examination tests concepts and principles related to the application nursing process to care for patients across the life span who are experiencing health differences related to *behavioral, regulatory, and metabolic dysfunction*.

The examination requires the student to use the nursing process as a framework for critical thinking and clinical decision making. Evidenced-based

nursing care and standards for nursing practice as well as ethical, legal, and regulatory concerns are addressed. In addition, students are required to apply principles, concepts, and theories from nursing science as well as the natural and social sciences, and the humanities to the practice of nursing.

**NURx213: Health Differences
Across the Life Span 3 3 credits**

This examination tests concepts and principles related to the application of the nursing process to care for patients across the life span who are experiencing health differences related to *musculoskeletal disorders, infectious and communicable diseases, tissue trauma, and neurological dysfunction*.

The examination requires the student to use the nursing process as a framework for critical thinking and clinical decision making. Evidenced-based nursing care and standards for nursing practice as well as ethical, legal, and regulatory concerns are addressed. In addition, students are required to apply principles, concepts, and theories from nursing science as well as the natural and social sciences, and the humanities to the practice of nursing.

**School of Nursing Enrolled Students and
Nursing Content Exams Questions:**
888- 647-2388, ext. 1314

**Excelsior College Course and Exams
Information and Registration:**
www.excelsior.edu/courses
www.excelsior.edu/exams
www.excelsior.edu/CourseSearch

Course/Exam Approval:
www.excelsior.edu/MessageCenter

Learning Resources:
www.excelsior.edu/practice
www.excelsior.edu/bookstore
www.excelsior.edu/library

NURx274: Focused Clinical Competencies Assessment (FCCASM) 4 credits

Prerequisites: Students are eligible to take the FCCASM when they have successfully completed 21 of the required 31 credits in general education and all eight nursing theory examinations.

This computer-delivered, simulated clinical assessment provides a means for students to demonstrate competencies related to the following three essential elements of nursing practice:

- Head-to-Toe Assessment and Nursing Process
- Managing Multiple Patients
- Participating in Interdisciplinary Health Care Teams

NURx299: Clinical Performance in Nursing Examination (CPNE[®]) 8 credits

Prerequisites: Students are eligible to schedule the CPNE[®] when they have successfully completed 21 of the required 31 credits in general education, all eight nursing theory examinations, and two of the three required simulations of the FCCASM. Students **may not take** the CPNE until all FCCA simulations are complete. In addition, a criminal background check report is required with submission of the CPNE application. See the *CPNE Study Guide* or our Web site for information about criminal background checks.

The CPNE[®] tests application of the nursing process and technical components of nursing practice in the care of adults and children in the acute care setting. Patients in these settings are experiencing potential, actual, and/or recurring health problems requiring maintenance and restorative interventions.

The CPNE is organized around three phases of the nursing process: planning, implementation, and evaluation. The planning phase includes assessment and analysis of information necessary for identifying nursing diagnoses. Nursing interventions are based on accurate assessments of the patient's response to health problems. Care of the patient is designed to maintain, restore, alleviate, or rehabilitate, and is then evaluated for effectiveness. Critical thinking, diagnostic reasoning, use of knowledge from nursing and related disciplines, and standards of care are assessed in this examination.

The *CPNE Study Guide* provides information on the process and content of this criterion-referenced performance examination and on the criteria for success. A videotape and workbook, workshops, teleconferences, and online programs are also available to assist students in learning the necessary competencies. Enrolled students are sent the study guide when they meet the eligibility requirements. Student may contact a member of the nursing faculty via telephone or the message center with any questions about the examination. It is essential to use the study guide to prepare for the CPNE, focusing on areas of care and critical elements to guide study and practice. Students who use a variety of learning resources and take a thorough and detailed approach when preparing for the examination are more likely to be successful. The pass rate for this examination was 62 percent in 2010. This examination may not be waived under any circumstances.

Included in the *CPNE Study Guide* are instructions for submitting an examination application electronically and information about the required documents to be submitted with the application, including the criminal background check. The study guide is designed to be a guide for use in preparing for the examination and is intended to serve as a supplement to information in nursing textbooks, i.e., it is intended to guide study, but does not replace in-depth information provided in nursing textbooks. Additional learning resources are listed in the *CPNE Study Guide* and the Student Support Services section of the *General Information* booklet.

Meeting Requirements

It is not necessary to finish the general education requirements before beginning the nursing component. Many students choose to meet requirements for both components simultaneously. To be eligible to apply for and schedule the CPNE[®], you must complete all required nursing theory examinations and be within ten semester hours of completing the general education component. The faculty strongly recommends that the natural and social science requirements be completed before taking any nursing examinations.

Meeting Specific Requirements

The following requirements must be completed with a grade of “C” or higher. Courses less than 2 semester credits (4 for Human Anatomy & Physiology) will not apply to meet these specific requirements.

- | | |
|------------------------------|-------------------|
| ■ College-level Mathematics | ■ Microbiology |
| ■ Ethics | ■ Psychology |
| ■ Expository Writing | ■ Sociology |
| ■ Human Anatomy & Physiology | ■ Statistics |
| | ■ Written English |

The Theory Examinations

College-Level Examination Program (CLEP)

If you wish to take CLEP tests to meet general education requirements, write or call:

CLEP Tests
College-Level Examination Program Services
PO Box 6600
Princeton, NJ 08541-6600
800-257-9558
www.clep.org/clep

Excelsior College® Examinations

The theory examinations are the primary method for documenting the required associate-degree-level theoretical knowledge in the nursing component. The examinations are computer-based, objective, multiple-choice tests and may be taken in any order. The order shown on the preceding pages is, however, the suggested sequence. *You should complete the human anatomy and physiology requirement, the microbiology requirement, and the life span developmental psychology requirement before taking the nursing examinations*, as application of this content is required in the nursing examinations.

The theory examinations are administered via computer on an appointment basis at Pearson Testing Centers throughout the United States and Canada as well as in other selected locations.

Contact Excelsior College for examination content guides, applications, and information about Pearson Testing Center locations and examination fees. Write or call:

Test Administration Office, Excelsior College
7 Columbia Circle
Albany, NY 12203-5159
518-464-8500 or call toll free:
888-72EXAMS (888-723-9267)

Policies Specific to the Associate Degrees in Nursing

The Excelsior College Student Policy Handbook is your resource for understanding the academic and administrative policies that are important to your academic success. It includes a wide range of information from important federal policies, including your right to privacy, to grading policies and policies and procedures concerning refunds, withdrawals, and other administrative issues. It is your responsibility to be familiar with these policies.

Your Personalized MyExcelsior Account:

www.excelsior.edu/MyExcelsior

Excelsior College Learning Resources:

www.excelsior.edu/library
www.excelsior.edu/practice
www.excelsior.edu/bookstore
www.excelsior.edu/MyExcelsior, click on the Resources tab

The LEARN Team:

email LearnTeam@excelsior.edu
or call toll free 888-647-2388 (ext. 1316)

About Test Preparation and Tutorial Services:

see page 8 or visit www.excelsior.edu/testprep

CPNE® Resources:

www.excelsior.edu/cpne

FCCASM Resources:

www.excelsior.edu/fcca

Excelsior College Community Resources:

www.excelsior.edu/MyExcelsior, click on Communities tab

Policies and procedures that apply specifically to the associate degrees in nursing are listed on the following pages. Please file your *Handbook* with your other important academic papers and this program catalog for easy reference.

Minimum Academic Average

Grades of D are not acceptable in transfer. Grades of D and F earned in any Excelsior College course or general education examination will be listed on your status report and official transcript and will be calculated in your GPA. Grades of D and F awarded for Excelsior College nursing theory examinations will be listed on your status report and official transcript and will be calculated into your GPA only for your fourth and final attempt.

In order to graduate, you must have a cumulative average of C (2.0) or better. **Although grades of D for Excelsior College courses will be accepted for credit in the general education component (except where otherwise specified), you must have the necessary grades to achieve a C average.**

Note: Throughout this catalog the term “credits” is used to indicate semester hours. Quarter hours are converted to semester hours by multiplying quarter-hour values by two thirds.

Time Limits

The associate degree in nursing program is designed to be completed at your own pace. Students enrolled in either the AS or AAS degree program are required to complete all degree requirements within a **seven-year period** of enrollment. This time limit on enrollment is cumulative if enrollment is not continuous. **Those who do not complete the program within this time may be subject to dismissal.**

General Education Component

Except for the information literacy requirement, there is no time limit on general education examinations or courses submitted for transfer credit. Credits earned at regionally accredited degree-granting institutions or through approved examination programs and for which official transcripts are available will be evaluated regardless of when they were completed.

You should plan carefully, consulting with your academic advisor about the examinations and courses to take to fulfill degree requirements. We recommend that you obtain prior approval from your academic advisor before applying or registering for an examination or course. Prior approval should be obtained by submitting a catalog description or official course outline; include the full name of the institution offering the course. Information should be sent via mail, fax, or the message center, along with full name and student identification number, well in advance of the registration deadline. It may take up to two weeks to receive a written reply.

If you do not have time to obtain approval in writing, please contact the College for tentative approval. When speaking with an academic advisor have all the necessary information available, including the name of the institution, the course title and course number, the academic department under which the course is offered, and the catalog content description. The advisor can give tentative approval by phone if the course appears to meet requirements, but final approval will not be sent until the catalog description has been verified. In choosing courses to meet the general education requirements, you should consider selections that will help to meet future educational or professional goals.

Nursing Component

Credit submitted from college-level nursing examinations and nursing courses must have been earned within five years prior to the date of enrollment.* There is no time limit on the acceptance of nursing examinations as long as you remain actively enrolled in the nursing program. If you received a waiver of any of the nursing theory examinations during a previous enrollment, you will not automat-

* If you transfer to a different degree program, the five-year time limit is based on the academic policy date for your new program.

ically receive waiver of those same examinations when reenrolling. The Excelsior College nursing faculty may need to review the courses again and you may lose the waiver completely, depending on the age of the course and current program requirements. Should enrollment lapse and you choose to reenroll, credit for any nursing examinations taken more than five years prior to reenrollment may not apply toward degree requirements.

Nursing Theory Examinations Policies

Policy on Registration Limitations for Nursing Computer-Delivered Exams

A student enrolled in the associate degree in nursing program may be registered for a total of four nursing theory examinations at any one time. A student may register for additional nursing theory examinations once an exam has been completed provided the total number of scheduled examinations and pending examinations does not exceed four.

Policy on Repeating Nursing Computer-Delivered Exams

Students enrolled in the associate degree in nursing program taking the nursing theory exams may take the computer-delivered theory examinations up to a total of four times. Failure of the examination at the fourth administration will lead to academic dismissal from the nursing program. Prospective students who fail an examination at the fourth administration will be denied admission to Excelsior College nursing programs. The most recent nursing theory examination grade applies towards the degree.

Students may repeat an examination 60 days after the first attempt and 120 days after the second and subsequent attempts.

Focused Clinical Competency Assessment (FCCASM) and Clinical Performance Examination in Nursing (CPNE[®]) Policies

Policy on Repeating the FCCASM and CPNE[®]

The FCCASM and CPNE[®] may be repeated twice for a total of three opportunities. Failure of either requirement at the third administration will lead to academic dismissal from the nursing program.

Technical Standards for the CPNE

Technical standards are the required and essential abilities that an individual taking the CPNE[®] must effectively demonstrate as an Excelsior College associate degree nursing student.

The Excelsior College School of Nursing is committed to providing educational opportunities for students with disabilities and is fully compliant with the Americans with Disabilities Act of 1990 and Section 504 of the Rehabilitation Act of 1973. The College provides reasonable accommodations based on the specific circumstances presented with each case.

The CPNE tests a student's application of the nursing process and technical components for nursing practice in the care of adults and children in the acute care setting. Therefore the nursing student must be able to perform the following:

- Assess, perceive, and understand the condition of assigned patients
- See, hear, smell, touch, and detect subtle changes in colors
- Communicate (both verbally and in writing) with English-speaking patients and/or family members/significant others as well as members of the health care team, including nurses, physicians, support staff and faculty
- Read and understand documents written in English
- Perform diagnostic and therapeutic functions necessary for the provision of general care and emergency treatment to the hospital patient

- Stand, sit, move and maintain the physical effort necessary to meet the demands of providing safe clinical care
- Solve problems involving measurement, calculation, reasoning, analysis and synthesis
- Perform nursing skills in the face of stressful conditions, exposure to infectious agents and blood-borne pathogens

Canceling a Nursing Performance Exam

To cancel the CPNE, do so with thought and consideration, as a cancellation fee is charged. You should notify the RPAC where you are scheduled to take the examination as soon as becoming aware of the need to cancel a confirmed examination date. You are also required to submit a written request for cancellation. Cancellation fees are charged according to the cancellation policy included with the confirmation materials. Students who do not report to a scheduled examination will forfeit the

Your Personalized MyExcelsior Account:

www.excelsior.edu/MyExcelsior

Apply for Admission to the School of Nursing:

www.excelsior.edu/apply

toll free: 888-647-2388, ext. 27

International Applicant Questions:

international@excelsior.edu

Student Policy Handbook:

www.excelsior.edu/StudentPolicyHandbook

Excelsior College Course and Exams

Information and Registration:

www.excelsior.edu/courses

www.excelsior.edu/exams

www.excelsior.edu/CourseSearch

Course/Exam Approval:

www.excelsior.edu/MessageCenter

Excelsior College Learning Resources:

www.excelsior.edu/library

www.excelsior.edu/practice

www.excelsior.edu/bookstore

www.excelsior.edu/MyExcelsior, click on the Resources tab

Excelsior College Community Resources:

www.excelsior.edu/MyExcelsior, click on Communities tab

full examination fee. Submission of another application form is required to reschedule a confirmed examination date.

Physical Education Courses

College courses in physical education can be applied toward degree requirements only if they have a classroom component with a theoretical base and are applicable to the degree. Activities courses in physical education are not acceptable in transfer to Excelsior College. Academic advisors may request course descriptions to verify the theoretical content of a physical education course.

Waiver of Excelsior College® Associate Degree in Nursing Theory Exams

Under certain conditions, credits from previously completed associate-level nursing courses may be submitted for the purpose of requesting a waiver of an Excelsior College nursing theory examination. Any such college course work submitted for faculty review must

- be from a regionally accredited degree-granting institution of higher education.
- have been completed no more than five years prior to the date of enrollment* in an Excelsior College nursing program.
- cover content equivalent to that of the examination for which the waiver is sought.
- carry a grade of B or better.
- be submitted for faculty review before the theory examination in that content area is taken.

Credit earned from most military service, foreign nursing schools, and occupational specialties may not be used to waive the nursing theory examinations because their course content is not equivalent to that of the examinations. If you have this type of background, you should discuss options with a nursing academic advisor.

* If you transfer to a different degree program, the five-year time limit is based on the academic policy date for your new program.

Due to the comprehensive content of each Excelsior College nursing theory examination, most students need a cluster of courses, including study of the care of adults and children, to meet the criteria for waiver. You are encouraged to obtain Excelsior College nursing theory examination content guides and to review the content outlines for comparison to courses already completed before submitting materials for waiver. This may help determine which examinations to take while waiting for the faculty to make a decision regarding a waiver request.

Nursing courses from licensed practical vocational nursing programs and hospital diploma programs both in the United States and abroad are NOT eligible for transfer credit since they do not carry college-level credits. However, the learning acquired in such course work is an important and valued asset and may be converted into academic credit by passing the Excelsior College® Examinations in nursing. See Essentials of Nursing Care: Health Differences for special considerations for waiver of that examination by LPN/LVN graduates.

Note: You may not request a waiver of a specific examination if you have failed the Excelsior College examination in that content area after completing the course. The nursing performance examinations, which include FCCASM and CPNE[®], may not be waived under any circumstances.

Planning for Degree Completion

The nursing component of the associate degree in nursing curriculum is designed to be completed in 18 months. The average time from enrollment to program completion for part-time study is four years. You are encouraged to enroll in the College to receive the necessary academic advisement necessary for degree completion.

When scheduling the Clinical Performance in Nursing Examination, you should plan for a three to five month waiting period from the date the Regional Performance Assessment Center (RPAC) administrative office receives your completed application packet until the examination is administered.

This is an important consideration when planning for program completion. Complete applications are processed in the order they are received.

Regional Performance Assessment Centers

Excelsior College has developed a national network of Regional Performance Assessment Centers (RPACs). Each RPAC is responsible for scheduling and administering the Clinical Performance in Nursing Examination. For additional information about each RPAC, and a list of hospital test sites, visit the RPAC area on our Web site.

Learning Resources for AS and AAS Nursing Students

The primary resource for each requirement is the content outline/study guide. They are intended to help guide learning and preparation for each requirement. Each content outline/study guide identifies required textbooks to be used in learning the content of the particular requirement, as well as supplemental resources. Other learning resources include online chats hosted by nursing faculty via MyExcelsior Community (formerly the Electronic Peer Network) and seminars to help guide you through the various requirements.

In order to help you achieve your educational goals, the Excelsior College School of Nursing offers a variety of learning services to you as an enrolled student.

- Access to academic advisors to assist with program planning
- Access to members of the nursing faculty via phone and the message center to advise you on preparing for the nursing theory and performance examinations
- Individual 30-minute teleconference with nurse faculty for advisement related to theory and performance examination preparation

- Online chats and discussion groups to help you prepare for theory and performance examinations
- Video resources and workbooks to help you prepare for the nursing performance examinations
- Workshops in various regions of the United States for the Clinical Performance in Nursing Examination
- Online nursing conferences to help you prepare for the theory examinations, FCCASM, and the CPNE[®]
- Online practice exams for the theory examinations and several of the general education examinations

If you have a question about a particular learning resource or want more information on the learning services available, including dates, fees, and locations offered, contact our LEARN team directly or visit our Web site.

Nursing Theory: Online Conferences

These eight-week online conferences are designed to prepare you for the nursing theory examinations. The conference will improve your understanding of the nursing theory content. Through textbook readings, learning activities, case studies, pre/post tests, and discussion boards, the sessions will provide you with an opportunity to learn each of the areas tested in the examination as well as connect you with other students and nursing faculty who will answer any questions posed.

Nursing Theory Practice Examinations

If you are working toward an associate degree in nursing, you may take advantage of the Excelsior College practice examinations. Practice exams are available for all of the associate degree in nursing theory examinations as well as some of the general education requirements.

These exams are comprised of “retired” exam questions from previous versions of the respective exams. Students can take two forms of practice exams online at home within a 120-day period. Valuable feedback is provided as

students learn how they performed on each question and why each answer was right or wrong. Although these exams are not predictive of anticipated student performance, the student can improve their knowledge of the relevant subject material and upgrade their skills.

Clinical Performance in Nursing Examination (CPNE[®]) Workshop

This three-day interactive workshop is designed to enable you to understand the structure and process of the Clinical Performance in Nursing Examination (CPNE[®]) and validate your readiness to successfully complete the CPNE. Your ability to perform the areas of care will be critiqued, and feedback will be provided related to a mock simulation lab and patient care situation. Our team of nursing faculty mentors offer these workshops in a variety of locations across the United States. Workshops are open to those individuals who are CPNE-eligible.

A skills portion of the workshop is designed to provide you with the opportunity for “hands on” practice of specific clinical skills. Clinical management/assessment skills include: abdominal assessment, neurological assessment, skin management, medications (NG, IM, SubQ, IV, IV push), wound management (wet to moist), peripheral vascular assessment, patient teaching, respiratory management, vital signs, mobility, and musculoskeletal management. Working collaboratively with our nursing faculty and your fellow students you will have the opportunity validate your knowledge and skill performance so as to develop a plan of action for successful completion of the CPNE.

CPNE[®] Online Conferences

Beginning CPNE[®] Preparation

Beginning CPNE[®] Preparation is an online conference designed to provide the learner with one-on-one interaction, to introduce the learner to the CPNE[®] preparation. It will review the structure and process of an actual CPNE weekend, the criterion by which the learner will be evaluated, and how critical thinking and empowerment strategies are used during the examination. In addition, the design, function

and use of required *Handbook of Nursing Diagnosis* will be reviewed. This online conference can be accessed at any time during the 14-day session (24 hours per day, for 14 days).

Nursing Care Planning

This online conference is designed to be completed during a 14-day period. The one-on-one guided learning interaction will enhance your skill in applying the nursing process to manage patient problems. It is designed to provide you with the skills necessary to maximize your nursing care plan preparation. The guided learning interaction will enhance your understanding of the application of the nursing process through self assessment and problem-solving patient care situations. Successful completion of the CPNE requires you to develop and implement a nursing care plan that is congruent with standards of nursing practice and medical regimens. This online conference can be accessed at any time during the seven-day session (24 hours per day, for seven days).

Documentation

This online conference is designed to be completed in seven days. The one-on-one guided learning interaction will enhance your ability to accurately document patient information in a manner consistent with the required critical elements of the CPNE. In addition, you will self assess the completed documentation to validate your understanding of the

CPNE requirements. This online conference can be accessed at any time during the seven-day session (24 hours per day, for seven days).

Skills

This online conference has been developed to help you identify your strengths and weaknesses as they relate to specific CPNE skills. The clinical management/assessment skills included are: asepsis, vital signs, abdominal assessment, neurological assessment, peripheral vascular assessment, respiratory assessment/management, medication administration (IM, SubQ, IV, IV push, and others), oxygen management, wound management/skin assessment, and musculoskeletal management. Our nursing faculty is available to answer questions and provide the support needed to be successful with the skills included in this online conference. In addition, the online conference provides an overview of the structure and process of the CPNE. This online conference can be accessed anytime during the four-week session (24 hours per day, for four weeks).



Additional CPNE® Learning Resources

CPNE Preparation Video and Interactive Workbook

This 90-minute CPNE orientation video is designed as a visual supplement to the *Clinical Performance in Nursing Examination Study Guide*. The video presents selected aspects of the orientation, laboratory simulation, and adult and child patient care situations. The video is accompanied by an interactive workbook, which offers study strategies, critical-thinking exercises, and suggestions on preparing for the CPNE. In addition, it also provides written exercises using diagnosis and critical thinking.

CPNE Skills Kit and Guided Learning Booklet

The basic skill bag includes dressing, intravenous, and medication supplies that will allow the student to simulate many aspects of patient care. The enhanced skill bag includes a double teaching stethoscope and/or a wound like those used during the CPNE®. Either bag includes the guided learning booklet, *Nursing Clinical Skills: A Thinking Approach*. This has multiple learning strategies, two case studies, and several critical thinking exercises that will assist the student in preparation for the CPNE.

CPNE Flash Cards or Audio CD Flash Cards

These flash cards or audio CD flash cards present each area of care with the required critical elements in a compact, easy-to-read or easy-to-listen format. In addition, the flash cards/CD contain helpful study strategies and sample documentation related to that area of care. These 5 × 8 cards are compact enough to be used for practice in the clinical area, but large enough for the addition of notes. Cards are hole punched and come with a ring for easy assembly. The CD is designed to provide easy navigation (forward and reverse) from critical element to critical element.

Your Personalized MyExcelsior Account:

www.excelsior.edu/MyExcelsior

Excelsior College Learning Resources:

www.excelsior.edu/library

www.excelsior.edu/practice

www.excelsior.edu/bookstore

www.excelsior.edu/MyExcelsior, click on the Resources tab

The LEARN Team:

email LearnTeam@excelsior.edu

or call toll free 888-647-2388 (ext. 1316)

About Test Preparation and Tutorial Services:

see page 8 or visit www.excelsior.edu/testprep

CPNE® Resources:

www.excelsior.edu/cpne

FCCASM Resources:

www.excelsior.edu/fcca

Excelsior College Community Resources:

www.excelsior.edu/MyExcelsior, click on Communities tab

Bachelor's Degree Program in Nursing

Bachelor of Science in Nursing

Beliefs About the Bachelor's Degree Nursing Practice

The faculty believes that bachelor's degree nursing practice requires an intellectual focus, the application of nursing theory, an extensive knowledge base, and the use of a scientific mode of inquiry. Nurses prepared at the bachelor's level use a distinct body of knowledge as well as intellectual and practice skills to provide culturally appropriate care to clients across the life span and at various points on the health-illness continuum. They are educated to deliver patient-centered care as a member of an interprofessional team emphasizing evidence-based practice, quality improvement approaches and prevention. Nursing practice is built on nursing knowledge, theory and research and the nurse applies and adapts knowledge from other fields and professions as appropriate.

The program framework is based on the *Essentials of Baccalaureate Education for Professional Nursing Practice* (AACN, 2008) which identifies curricula elements and expected outcomes and provides the educational framework for the preparation of professional nurses. Achievement of these outcomes enables graduates to practice in an ever-changing and complex health care environment. The document emphasizes content and concepts such as patient centered care, clinical reasoning/critical thinking, cultural sensitivity, professionalism and genetics, as well as providing a solid base in liberal education so students can apply learning to complex problems and challenges.

BS

Bachelor's
Degree Program

Purpose of the Bachelor of Science in Nursing Degree Program

The purpose of the nursing program is to build upon prior knowledge with new learning. Using both a teaching and outcomes assessment model, the program provides a flexible means for registered nurses to obtain their bachelor's degree. The program offers access to education for students of all backgrounds including diverse and underserved populations. The curriculum serves as a foundation for graduate study and the pursuit of lifelong learning, which is essential for practice in the profession.

Program Outcomes

1. Uses a holistic approach to design care with clients* experiencing variable and complex health care needs.
2. Integrates multiple communication strategies to establish relationships with clients* and health care team members for the provision of safe, quality care.
3. Evaluates data to inform decision making in response to complex situations.
4. Applies evidence from varied sources to impact quality client outcomes.
5. Applies leadership concepts and principles to deliver accessible, cost-effective, safe, quality care in a variety of settings for diverse populations.
6. Articulates responsibilities and contributions of professional nursing to health care.

* client(s): individual, family, aggregate, and community.



CHART 2

Bachelor of Science in Nursing Degree for Registered Nurses

The following requirements are effective October 1, 2011

Total Degree Credits Required: 121

BS

General Education Component

Credit Hours

Written English Requirement ^②

6

Information Literacy ^②

1

Humanities

9

Ethics ^②

3

Total Humanities

12

Social Sciences/History

9

Psychology

3

Sociology

3

Total Social Sciences

15

Natural Sciences/Mathematics

3

Human Anatomy and Physiology *

4

Microbiology

3

Sciences Supportive of Nursing

2

Statistics ^①

3

Total Natural Sciences

15

Arts & Sciences Electives

12

Total General Education

61

Nursing Component

Credit Hours

30 semester hours of nursing credit granted for prior learning validated by nursing education and successful completion of the NCLEX-RN®.

30

NUR 435: Professional Socialization

OR

NUR 436: Professional Transitions ^④

3

NUR 442: Health Assessment and Promotion in Nursing Practice

4

NURx430: Research in Nursing (exam)

OR

NUR 430: Research in Nursing (course)

3

NUR 446: Teaching and Learning in a Diverse Society

3

NURx420: Management in Nursing Examination

4

NURx448: Community-Focused Nursing Examination

OR

NURx306: Community-Focused Nursing Examination ^⑤

4

NUR 438: Nursing Informatics

2

Nursing Elective Credits (upper level)

3

NUR 450: Capstone ^③

4

Total Nursing

60

* The Human Anatomy and Physiology requirement can also be met by: Anatomy (2 credits) and Physiology (2 credits).

① Statistics is a prerequisite for the Research in Nursing course and examination requirements.

② Written English requirement (3 credits must be beyond freshman level), information literacy, and ethics (upper level) must be completed prior to beginning the nursing component.

③ Students must complete all other nursing component requirements and be within 6 credits of completing general education requirement.

④ Effective November 2011, NUR 436 replaces NUR 435.

⑤ Effective November 2011, NURx448 replaces NURx306

Bachelor of Science in Nursing Degree Requirements

The Bachelor of Science in nursing degree requires a total of **121** credits including **61** in general education and **60** in nursing.



You are subject to the degree requirements in effect at the time of your enrollment or program/degree transfer (program transfer refers to change from one school to another; degree transfer refers to changing degrees within the same school).

The faculty reserves the right to make changes in curricular requirements as necessary to reflect current professional practice. Changes may affect both enrolled and prospective students. It is your responsibility to keep informed of such changes. We make every effort to inform you of changes as they occur. Current information about degree requirements is posted on our Web site. Information about changes to degree requirements is also made available on our Web site.

Your Personalized MyExcelsior Account:

www.excelsior.edu/MyExcelsior

Apply for Admission to the School of Nursing:

www.excelsior.edu/apply

toll free: 888-647-2388, ext. 27

International Applicant Questions:

international@excelsior.edu

Student Policy Handbook:

www.excelsior.edu/StudentPolicyHandbook

College Publications, Applications, and Forms:

www.excelsior.edu/publications

Excelsior College Community Resources:

www.excelsior.edu/MyExcelsiorCommunity

Excelsior College Course and Exams

Information and Registration:

www.excelsior.edu/courses

www.excelsior.edu/exams

www.excelsior.edu/CourseSearch

Course/Exam Approval:

www.excelsior.edu/MessageCenter

Excelsior College Learning Resources:

www.excelsior.edu/library

www.excelsior.edu/bookstore

www.excelsior.edu/MyExcelsior, click on the Resources tab

General Education Component

61 credits

Because it contributes both knowledge and an intellectual approach to problem solving, the general education component is an essential part of preparation for professional nursing practice. The general education requirements ensure that the student will develop college-level competence in the arts and sciences areas of the humanities, social sciences/history, and natural sciences/math.

General education credits may be earned through Excelsior College courses and examinations, or transferred from accredited, degree-granting institutions or approved examination programs for which official transcripts are provided. Refer to the Academic Options section of the general information booklet, *Start to Finish*, for additional information.

It is recommended that enrolled students seek formal course approval from their advisor prior to registering for courses or examinations. Enrolled students can log on to their customized MyExcelsior page which provides options for meeting remaining requirements. Print and Web-based Excelsior College resources include *A Student Guide to Credit*

by *Examination at Excelsior College* and *How Much Will Your Bachelor's Degree in Nursing Cost?* as well as periodic course schedules mailed to enrolled students. Excelsior College academic advisors work with enrolled students to create study plans that best suit their learning styles, time frames, and budgets.

If you plan to enter a master's degree program, consider taking courses that support your area of interest. Also, take one or two general education courses at the upper-division level. You should contact the graduate school that you wish to attend to request information about policies and requirements.

Please request course approvals well in advance of registration deadlines to avoid delays. To obtain course approval, contact an academic advisor by phone, mail, fax, or email and provide the name of the institution, the course title and catalog number, the academic department under which the course is offered, and the catalog content description. In some circumstances a course syllabus/outline may be requested. When requesting course approval include your full name and student identification number.

General education courses taken within a nursing department or listed as "for nurses" are subject to classification review. Such courses often appear on transcripts as "anatomy and Physiology for Nurses," "Nursing Chemistry," or "NURS: Pathophysiology."

The Requirements

- 1. Information Literacy:** Students are expected to demonstrate competency in information literacy. Please see Information Literacy on page 6 for more information

Satisfy the information literacy requirement with INL 102 Information Literacy.

Note: Throughout this catalog the term "credits" is used to indicate semester hours. Quarter hours are converted to semester hours by multiplying quarter-hour values by two thirds.

- 2. Written English Requirement:** Six credits are required in expository writing, of which three credits are required at the intermediate or upper level.

The expository writing requirement would be waived for those students who previously completed another bachelor's or master's degree from an accredited institution in the United States.

How to satisfy expository writing at the intermediate or advanced level:

Course suggestion:

ENG 201 Writing for the Professions

- 3. Humanities Requirements:** The humanities requirements are designed to help you learn to read critically, reason well, think logically and critically, and express aesthetic appreciation. You are encouraged to study at least two disciplines in this area.

A minimum of 9 credits must be earned in subjects such as art (appreciation, history, or studio), literature, music, philosophy, religion, theater, speech, and foreign languages.

A minimum of 3 credits must be earned in a course in ethics at the upper level. The ethics requirement must be a general course in ethics that covers foundational theories, concepts, and selected issues related to ethical choices. Courses in business, management or religious studies cannot be applied to this requirement

How to satisfy the upper-level ethics requirements:

Course/exam suggestions:

PHL 312 Ethics in Health Care **OR**

PHLx310 Ethics: Theory & Practice **OR**

HUMx310 Philosophical Issues in Bioethics

- 4. Social Sciences/History Requirements:** The social sciences/history distribution is designed to provide you with a better understanding of people and society and the processes that individuals use to order their world. You are encouraged to consider a course on the family or family dynamics to meet this requirement. An understanding of economics and violence is extremely useful in current health care environments. Studies in Western and other cultures are encouraged.

At least 15 credits must be earned in subjects such as history, geography, gerontology, economics, anthropology, political science, organizational behavior, sociology, and psychology.

Within the social sciences/history distribution students are required to complete one course/exam in psychology and one course/exam in sociology

5. **Natural Science/Mathematics Requirements:** The natural sciences/mathematics distribution is designed to help you develop a scientific mode of reasoning and an understanding of theory development and evaluation.

At least 15 credits must be earned in such subjects as biology, mathematics, statistics, chemistry, genetics, pathophysiology, and physics.

Within the natural sciences/mathematics distribution, students are required to complete 8 credits of natural sciences supportive of nursing that will include human anatomy and physiology and microbiology. Students who do not have a total of 8 credits in anatomy and physiology and/or microbiology will need an additional 2 credits of natural sciences supportive of nursing that may be either in biology, chemistry, genetics, pathophysiology, or physics. Survey courses are not acceptable.

Students are also required to complete a course in statistics. The statistics course must include both descriptive and inferential statistical measures. The statistics requirement is a prerequisite for the Research in Nursing course and examination.

How to satisfy the statistics requirement:

Descriptive and Inferential

Course/exam suggestions:

BUS 233 Business Statistics **OR**

MAT 201 Statistics

6. **Arts and Sciences Electives:** The remaining 12 arts and sciences credits may be distributed among the humanities, social sciences/history, and natural sciences/mathematics. Students are encouraged to study in a specific area or discipline that may be a personal or professional interest.

Meeting Specific Requirements

The following courses must be completed with a grade of "C" or higher. Courses less than 2 semester credits (4 for Human Anatomy and Physiology) will not apply to meet these specific requirements.

- Ethics
- Expository Writing
- Human Anatomy & Physiology
- Microbiology
- Psychology
- Sociology
- Statistics
- Written English

Nursing Component

60 credits

The nursing component focuses on knowledge and professional competencies expected of graduates of bachelor's programs. Emphasis is placed on integration of nursing and related arts and sciences knowledge in a variety of complex situations related to nursing care of individuals, families, aggregates, and communities. All writing requirements, information literacy, and ethics must be completed prior to beginning the nursing component.



NURx448
Community-Focused Nursing* **4 credits**

Prerequisites: Writing requirements, information literacy, and ethics

The Community-Focused Nursing examination prepares the registered nurse for transition to bachelor's-level practice. The concept of client is expanded to include families, aggregates, and communities within the context of a complex and dynamic environment. Principles of epidemiology, demography, environmental sciences, and political organizations are integrated with nursing concepts and principles to provide a basis for community nursing practice. Analysis and application of selected theories and health promotion/protection and disease prevention strategies are explored. The examination focuses on the synthesis of population-based health and public health concepts to promote, maintain, and restore health of families, aggregates, and communities. Knowledge from practice and readings is used to operationalize the core concepts of critical thinking, communication, research, role development, caring and cultural competency.

Delivery: Computer-based, multiple-choice theory examination

NURx420 Management in Nursing **4 credits**

Prerequisites: Writing requirements, information literacy, and ethics

The Management in Nursing examination, measures ability to apply specific management concepts to the care of the client (individual, family, groups, and communities) within diverse health care settings. Concepts covered include leadership, innovation, managing the organization, fiscal management, empowerment, and information management. Emphasis is placed on the role of the registered nurse as an active participant in the organization.

Delivery: Computer-based, multiple-choice theory examination

* Effective November 2011, NURx448 replaces NURx306.

NURx430 Research in Nursing
examination **3 credits**

Prerequisites: Statistics, writing requirements, information literacy, and ethics

The examination measures knowledge and skill acquisition related to the research process. Evidence-based practice, critical thinking, critical reading and the nurse's role in the application of research to practice are emphasized. The content covered in the examination consists of the foundations of research, the research process, quantitative and qualitative research, and evaluation of a research study. Knowledge and understanding of statistics is required.

Delivery: Computer-based multiple-choice and extended response theory examination.

NUR 430: Research in Nursing
course **3 credits**

Prerequisites: Statistics, writing requirements, information literacy, and ethics

This course focuses on knowledge and skill acquisition related to research process. Evidence-based practice, critical thinking, critical reading, and the baccalaureate nurse's role in the application of research to practice are emphasized. Course content examines the foundations of research, the research process, quantitative and qualitative research designs, as well as evaluation of a quantitative research study

Delivery: Online course delivered over 15 weeks

NUR 436: Professional Transitions** **3 credits**

Prerequisites: Writing requirements, information literacy, and ethics

This course explores the evolution of contemporary nursing in the context of history, theory, knowledge, and reasoning while enhancing one's role as a member of the profession. Emphasis is placed on the roles of the bachelor's prepared professional nurse, the processes guiding nursing practice, life-long learning, and nursing in the changing health care environment and world.

Delivery: Online Course delivered over 8 weeks

** Effective November 2011, NUR 436 replaces NUR 435.

NUR 442: Health Assessment and Promotion in Nursing Practice **4 credits**

Prerequisites: Writing requirements, information literacy, and ethics

This course focuses on a holistic approach to health assessment and health promotion across the life span. The development of clinical judgment and the application of communication and assessment skills in the professional nursing role are achieved through the integration of advanced knowledge, concepts, theories and practice.

Delivery: Online Course delivered over 15 weeks

NUR 446: Teaching and Learning in a Diverse Society **4 credits**

Prerequisites: Writing requirements, information literacy, and ethics

This course focuses on the role of the nurse as educator and the ability to teach a group of adult clients with a shared learning need. Theory and research-based evidence from nursing and other disciplines are integrated with concepts of caring and cultural competence, health promotion, behavioral change, and principles of teaching and learning. Application of the education process is emphasized. In partnership with clients, the student develops, implements, and evaluates a teaching plan designed to produce a desired change in behavior

Delivery: Online course delivered over 15 weeks; delivered over 8 weeks beginning January 2012

NUR 438: Nursing Informatics **2 credits**

Prerequisites: Writing requirements, information literacy, and ethics

This course provides knowledge about the roles and skills in information management and the application of technology to inform nursing practice. Emphasis is placed on technological supports for patient care interventions and the use of decision-support systems to gather evidence to guide practice. The use and understanding of standardized ter-

minologies and the role of information technology in improving patient outcomes and creating a safe environment will be included.

Delivery: Online course delivered over 8 weeks beginning January 2012

Nursing Electives **3 credits**

Prerequisites: Writing requirements, information literacy, and ethics

In addition to the nursing requirements, 3 credits of nursing elective credit at the bachelor's level are necessary to meet the 60 credits of the nursing component. Consultation with your academic advisor is required before taking a course or examination for nursing elective credit in order to be sure that you are choosing an option that is applicable toward your degree.

NUR 450: Capstone Course **4 credits**

Prerequisites: All other nursing component requirements must be completed prior to the capstone; must be within 6 credits of completing the general education component. Current RN licensure will be validated prior to enrollment in this course.

This course focuses on synthesizing theories, principles, models, and skills from nursing, other disciplines, and the arts and sciences. The student integrates knowledge gained throughout the curriculum to operationalize core concepts (critical thinking, communication, research, role development, leadership, caring, and cultural competence) while functioning in roles of bachelor's nursing practice. Multiple theories and models are applied to the care of the client across the life span in the community setting. The focus is on families, aggregates, and communities as the client. Each student's unique experiences are used as the context for learning to enhance practice and enrich professional development. This course cannot be waived under any circumstances.

Delivery: Online course delivered over 15 weeks

Certifications Approved for Elective Credit

Nursing elective credits can be granted to students who hold the following professional nursing certifications (check our Web site for current listing of certifications approved for elective credit):

- **AACN Certification Corporation (CCRN)**
Certification for Adult Critical Care Nurses
4 credits

Certification for Neonatal Critical Care Nurse
4 credits

Certification for Pediatric Critical Care Nurses
4 credits

Two additional nursing elective credits will be awarded to students for each additional CCRN certification (adult, pediatric, neonatal). That is, the student will be awarded four credits for the first certification and two credits for each subsequent certification.

Certification for Progressive Care Nurses (PCCN) **3 credits**
- **Academy of Medical-Surgical Nurses**
Certified Medical-Surgical Nurses
4 credits
- **American Board of Perianesthesia Nursing Certification, Inc. (ABPANC)**
Certified Post Anesthesia Nurse (CPAN)
4 credits

Certified Ambulatory Perianesthesia Nurse (CAPA) **4 credits**

Five nursing elective credits will be awarded to students holding both CPAN and CAPA.
- **American Nurses Credentialing Center**
Certified Gerontological (ADN) Nurse
3 credits

Psychiatric and Mental Health Generalist
3 credits
- **Board of Certification for Emergency Nurses**
Certified Emergency Nurse (CEN) **3 credits**
- **Competency and Credentialing Institute**
Certified Perioperative Nurse (CNOR)
3 credits

- **National Board for Certification of Hospice and Palliative Nurses**
Certified Hospice and Palliative Nurse (CHPN)
3 credits
- **Pediatric Nursing Certification Board**
Certification in Pediatric Nursing (CPN)
3 credits
- **Wound, Ostomy, and Continence Nurse Certification Board**
Certified Wound Care Nurse (CWCN)
3 credits

Certified Ostomy Care Nurse (COCN)
3 credits

Certified Continence Care Nurse (CCCN)
3 credits

Policies Specific to the Bachelor of Science Degree in Nursing

The Excelsior College Student Policy Handbook is your resource for understanding the academic and administrative policies that are important to your academic success. It includes a wide range of information from important federal policies, including your right to privacy, to grading policies and policies and procedures concerning refunds, withdrawals, and other administrative issues. It is your responsibility to be familiar with these policies.

Policies and procedures that apply specifically to the bachelor's degree in nursing are listed on the following pages. File your *Handbook* with your other important academic papers and this program catalog for easy reference.

Program Planning with Academic Advisors:
enrolled students—www.excelsior.edu/MessageCenter

Excelsior Online Course Questions:
enrolled students—email: nursing_bachelors@excelsior.edu

About Test Preparation and Tutorial Services:
see page 8 or visit www.excelsior.edu/testprep

Admission

Excelsior College offers a bachelor's in nursing degree program for registered nurses. The program is designed for registered nurses who have successfully completed the NCLEX-RN®, learning validated by prior education, and have a current license to practice as a registered in the United States.

International Student Admission Requirements

For the bachelor's program, in addition to official transcripts, nursing candidates must demonstrate that they have an equivalent U.S. Registered Nurse (RN) licensure. To be eligible for admission, the applicant must be a graduate from an approved school of nursing in their country of education and hold a current, unencumbered nursing license (if licensed in multiple jurisdictions and/or countries, all licenses must be unencumbered). All nursing school transcripts and all licenses will be validated by primary source verification. International candidates must apply to the Commission on Graduate of Foreign Nursing Schools (CGFNS) New York Credential Verification Service (NYCVS) and the New York State Education Department (NYSED) to have their foreign nursing education evaluated and approved by the aforementioned organizations.

Detailed application information and instructions can be found in our applications for admission.

English Language Proficiency Requirement

International candidates from non-English speaking countries must show evidence of sufficient English language proficiency through one of the following options:

1. Submission of TOEFL (Test of English as a Foreign Language) or IELTS (International English Language Testing System) taken within the last two years.
2. Successful completion of Excelsior College's **ENGx111: English Composition** examination or **ENGx110: College Writing** examination.
3. Submission of evidence of the successful completion of at least nine credit hours of academic work in courses delivered in English at an institution of higher education in the United States.

Time Limit

The Bachelor of Science in nursing degree program is designed to be completed at your own pace, but must be completed within a seven-year period of enrollment. This time limit on enrollment is cumulative if enrollment is not continuous. Those who do not complete the program within this time frame may be subject to dismissal.

General Education Component

Except for the information literacy requirement, there is no time limit on general education examinations or courses submitted for transfer credit. Credits earned at accredited degree-granting institutions or through approved examination programs, and for which official transcripts are available, will be considered for transfer regardless of when they were completed.

Nursing Component

Credit being submitted from bachelor's-level nursing examinations and courses, for the purpose of meeting the requirements of the nursing degree, must have been earned within five (5) years from the date of enrollment in the program. There is no time limit on the acceptance of nursing credits as long as students remain actively enrolled in the Excelsior College nursing program. Should your enrollment lapse and you need to reenroll, you will lose any nursing credits earned more than five years prior to enrollment. If you have waived any of the nursing theory examinations or requirements during a previous enrollment, you will not automatically receive waiver of those same examinations/requirements when reenrolling. The Excelsior College nursing faculty may need to review the courses again, and you may lose the waiver, depending on the age of the course and current requirements.

Mathematics Policy

No more than three courses in the semester-hour system (four courses in the quarter-hour system) of college-level mathematics below the level of calculus can be applied toward degree requirements. Credit from courses listed as developmental or remedial cannot be applied toward degree requirements.

Minimum Academic Average

Grades of D are not acceptable in transfer. Grades of D and F awarded in any Excelsior College course or examination are included on the official transcript and the My Academic Plan. These grades will be calculated in the GPA. A cumulative average of C (2.0) or better is required to graduate. Although grades of D are acceptable in the general education component (except where otherwise specified), students must have the necessary grades to achieve a C average.

Policy on Repeating Nursing Computer-Delivered Examinations and Nursing Courses

Students may take each nursing theory examination a maximum of four times and no more than three times in one year. Failure on the examination at the fourth administration will lead to academic dismissal from the nursing program. Prospective students who fail an examination at the fourth administration will be denied admission to Excelsior College nursing programs. Students may repeat an examination 60 days after the first failure and 120 days after the second and subsequent failures.

Students may take each nursing course a maximum of three times. Failure on the third attempt will lead to dismissal from the nursing program.

Waiver of Excelsior College® Nursing Bachelor's Theory Examinations

Under certain conditions, credits from previously completed bachelor's-level nursing courses may be submitted for the purpose of transfer or to request a waiver of an Excelsior College nursing theory examination or course. Nursing courses from hospital diploma programs both in the United States and abroad are not eligible for transfer credit. Bachelor's course work credit submitted for faculty review as a request for waiver must:

- be from a regionally accredited degree-granting institution of higher education
- have been completed no more than five years from the date of enrollment in the Excelsior College bachelor's nursing program
- cover content equivalent to that of the examination/course for which the waiver is sought
- carry a grade of C or better
- be submitted for faculty review before the theory examination/course in that content area is taken

Excelsior College® Examinations

Three examinations in the bachelor's program are administered via computer.

- Community-Focused Nursing
- Management in Nursing
- Research in Nursing

These examinations are available on an appointment basis at Pearson VUE Testing Centers throughout the United States and Canada as well as in other selected locations. Examination content guides, applications and information about Pearson Testing Center locations and examination fees are available on our Web site.

You may also contact our Test Administration Office with questions at:

Test Administration Office
7 Columbia Circle
Albany, NY 12203-5159
518-464-8500 or call toll free:
888-72EXAMS (888-723-9267)

Learning Resources for Bachelor's Degree in Nursing Students

The primary resource for each bachelor's examination requirement is the content guide and required resources, including textbooks and journal articles. Each content guide identifies required textbooks to be used for learning the content of the particular requirement as well as supplemental resources. Other learning and examination resources can be found in the Excelsior College Library and in FAQs on our Web site.

To help you achieve your educational goals, the School of Nursing offers a variety of guided learning opportunities to you as an enrolled student.

As an enrolled student, you will have access to:

- academic advisors to assist you with program planning
- administrative staff for questions related to online courses
- members of the nursing faculty to answer questions about courses and examinations.

Your Personalized MyExcelsior Account:

www.excelsior.edu/MyExcelsior

Admissions: toll free 888-647-2388, ext. 27

College Publications, Applications, and Forms:

www.excelsior.edu/publications

Student Policy Handbook:

www.excelsior.edu/StudentPolicyHandbook

Fee Schedules, Financial Aid, and Scholarships:

www.excelsior.edu/fees

www.excelsior.edu/FinancialAid

www.excelsior.edu/scholarships

Excelsior College Learning Resources:

www.excelsior.edu/library

www.excelsior.edu/bookstore

www.excelsior.edu/MyExcelsior, click on the Resources tab

Student Online Success Guide

www.excelsior.edu/SuccessGuide

Excelsior College Online Writing Lab (OWL):

www.excelsior.edu/OWL

Free Writing Resources (*scheduled to debut Fall 2011*),
Online Software Skills Training through Atomic Learning
(*EC course and exam registrants only*),

Online Tutoring Services through SMARTHINKING™
(*EC course and exam registrants only*)

www.excelsior.edu/MyExcelsior, click on the Resources tab

Excelsior College Community Resources:

www.excelsior.edu/MyExcelsior, click on Communities tab

Beliefs About Master's Degree Nursing Practice

The faculty believes that masters-prepared nurses in the specialties of clinical systems management, nursing education, and nursing informatics use knowledge from nursing and other professions to influence health policy, research, and professional practice in a variety of academic and service settings. They become leaders in creating collaborative environments that advance and promote professional practice and in implementing safe, quality care in a variety of settings and roles that influences health care outcomes for individuals, populations, or systems.

The program framework is based on The Essentials of Masters' Education in Nursing (AACN, 2011) identified curricula elements and expected outcomes and it builds upon and extends the body of knowledge and competencies from prior course work and experiences. It emphasizes as stated in the AACN Essentials document that the master's-prepared nurse will "lead change for quality care outcomes; advance a culture of excellence through lifelong learning; build and lead interprofessional care teams; navigate and integrate care services across the health care system; design innovative nursing practices; and translate evidence into practice" (p. 31). A foundation of core courses prepares students with a theoretical base and process prior to study in their selected specialty area. Content and concepts such as leadership and organizational skills, quality improvement, patient safety, health policy, global perspectives, communication, advocacy, interprofessional practice, and innovative technologies expand students' knowledge base and enrich their skills.

Purpose of the Graduate Program in Nursing

The purpose of the Master's in nursing program is to prepare registered nurses for successful careers in a variety of academic and service settings as clinical systems managers, nurse educators, and nurse informaticists. The program educates students for advanced practice roles by creating an academic environment that fosters scholarship, critical thinking, and creativity. Using an instructional model through online courses and assessments and a rigorous, challenging curriculum, the program provides a flexible means for registered nurses, including those from diverse and underserved populations, to obtain a master's degree. The program emphasizes pursuit of lifelong learning and professional development and serves as a strong foundation for doctoral study.

Master of Science in Nursing Advising Team:

Toll free at 888-647-2388 (ext. 1317)

Excelsior College Community Resources:

www.excelsior.edu/MyExcelsior, click on Communities tab

Course/Exam Approval:

www.excelsior.edu/MessageCenter

Course Registration:

www.excelsior.edu/courses

Excelsior College Learning Resources:

www.excelsior.edu/library

www.excelsior.edu/bookstore

www.excelsior.edu/MyExcelsior, click on the Resources tab

Excelsior College Community Resources:

www.excelsior.edu/MyExcelsior, click on Communities tab

Master of Science in Nursing

with a Specialization in Clinical Systems Management

The Master of Science in nursing with a specialization in Clinical Systems Management consists of 38 required credits. The curriculum is organized into three components: the graduate nursing core courses, the health care informatics courses, the clinical systems management courses, and the Capstone Experience. Students are introduced to the master's curriculum by taking courses within the nursing core and/or informatics component. The nursing core and informatics courses can be taken concurrently or interchangeably.

The graduate nursing core contains content that is foundational to the development of specialty knowledge. Courses within the core cover content areas such as health care economics, role of theory in practice, policy development and implementation, research process, and human diversity. The graduate nursing core consists of five courses: *Theoretical Foundations of Nursing Practice*; *Professional Role Development and Ethics*; *Research and Evidence-Based Practice*; *Health Care Delivery Systems: Political, Social, and Economic Influences*; and *Community Nursing: Human Diversity and Public Health*. The health care informatics component focuses on content that is supportive of the role of the clinical systems manager such as information management systems for health care and the ethical, political, social, and legal implications of information systems management in the health care arena. The informatics component consists of two courses: *Management Information for Decision Support* and *Issues in Health Care Informatics*. Students successfully complete all the nursing core and informatics courses prior to beginning the clinical systems management courses.

The clinical systems management component of the curriculum focuses specifically on the knowledge and skills required to implement a leadership role in clinical systems. Content covering areas such as finance, workforce management, leadership

role, organizational culture and change, and strategic initiatives are included in the three courses that make up the clinical systems management component. This component consists of the following courses: *Management of Clinical Systems*, *Management of Fiscal and Operational Systems*, and *Leadership of the Organizational System*.

The five-credit *Capstone Experience* begins after the successful completion of 33 credits. The Capstone Experience has three components: an administrative project, an online seminar, and a leadership retreat. This experience focuses on knowledge synthesis and role development. At the completion of this curriculum, students are prepared to function in the role of leader or manager across organizational systems.

Educational Outcomes

By completion of the program the graduate will be able to

1. Articulate the role of the master's-prepared nurse within the philosophical, ethical, and theoretical framework of nursing science.
2. Use knowledge and analytical skills to appraise the contextual environment of health care in order to inform and influence decision making across the health care system.
3. Apply knowledge and skills from multiple disciplines in the use of clinical and management information systems to improve client care.
4. Establish collaborative partnerships with diverse constituencies and interdisciplinary teams to pursue health-related goals and influence change.
5. Apply principles and theories of performance improvement, systems thinking, health policy, and resource allocation to manage the health care enterprise or outcomes.
6. Assume a leadership role in developing systems that provide care for individuals and populations.

MIS

Graduate Degree
Program

7. Use advanced communication strategies with multiple stakeholders to address professional and health care system issues and achieve goals.
8. Develop approaches to health care delivery that address the ethical, legal, social, and political requirements of diverse populations and stakeholders.
9. Create culturally sensitive and responsive environments of care.
10. Incorporate the scope of practice, professional standards, and specialty knowledge to implement the role of the master's-prepared nurse in a variety of settings.
11. Develop evidence-based practice using the research process to enhance safe, cost-effective, quality care.
12. Take responsibility for lifelong learning, act as a role model, and make contributions to the profession.

Master of Science in Nursing

with a Specialization in Nursing Education

The Master of Science in nursing with a specialization in Nursing Education consists of 39 required credits. The curriculum is organized into three components: the graduate nursing core courses, the specialty courses, and the Nursing Education Capstone. Students also must complete one 3-credit graduate elective in an area of interest that complements their area of specialization and is pre-approved by the faculty.

The nursing core contains content that is foundational to the development of specialty knowledge. Courses within the core cover content areas such as health care economics, role of theory in practice, policy development and implementation, research process, and human diversity. The nursing core consists of five courses: *Theoretical Foundations of Nursing Practice*; *Professional Role Development and Ethics*; *Research and Evidence-Based Practice*; *Health Care Delivery Systems: Political, Social, and Economic Influences*; and *Community Nursing: Human Diversity and Public Health*.

The nursing education specialty component of the curriculum focuses on the knowledge and skills required to implement the role of nurse educator in an academic or service setting. Content covering learning theories, teaching strategies, curriculum development, evaluation of learning outcomes, and utilization of technologies to support teaching are included in the four courses that make up the nursing education specialty component. This component consists of the following courses: *Designing a Student Learning Environment*; *Curriculum and Program Planning*; *Evaluation and Assessment in Nursing Education*; and *Theories and Methods of Teaching With Technologies*.

The five-credit Nursing Education Capstone begins after the successful completion of 34 credits. The Nursing Education Capstone has three components: an educational project, an online seminar, and an educational leadership retreat. This experience focuses on knowledge synthesis and role



development. At the completion of this curriculum, students are prepared to function in the role of nurse educator in a variety of educational settings.

Educational Outcomes

By completion of the program the graduate will be able to

1. Articulate the role of the master's-prepared nurse within the philosophical, ethical, and theoretical framework of nursing science.
2. Use knowledge and analytical skills to appraise the contextual environment of nursing education in order to inform and influence decision making.
3. Apply knowledge and skills from multiple disciplines in designing curricula and formatting program outcomes.
4. Establish collaborative partnerships with diverse constituencies to pursue education-related goals and influence change.
5. Create an educational environment that facilitates student learning and achieves desired outcomes.
6. Assume a leadership role in the educational organization to shape and implement change.
7. Use persuasive communication strategies with multiple stakeholders to address professional and educational system issues and achieve goals.
8. Develop approaches to the educational environment that address the cultural, ethical, legal, social, economic, and political requirements of diverse populations and stakeholders and impact the educator role.
9. Incorporate the scope of practice, professional standards and specialty knowledge to implement the role of the master's-prepared nurse in a variety of educational settings.
10. Develop evidence-based practice using the research process and effectively engage in scholarship.

11. Take responsibility for lifelong learning, act as a role model, maintain competence, and make contributions to the profession.
12. Use multiple strategies to assess and evaluate learning in various settings.

Master of Science in Nursing

with a Specialization in Nursing Informatics

The Master in Science in nursing with a specialization in Nursing Informatics consists of 37 required credits. The curriculum is organized into 3 components: the graduate nursing core courses, the specialty courses, and the Nursing Informatics Capstone. Students must also complete one 3-credit graduate elective related to the area of specialization. The nursing core contains content that is foundational to the development of specialty knowledge. Courses within the core cover content areas such as health care economics, role of theory in practice, policy development and implementation, research process, and human diversity. The nursing core consists of five courses: *Theoretical Foundations of Nursing Practice*; *Professional Role Development*

MS

Graduate Degree
Program

Master of Science in Nursing Advising Team:
Toll free at 888-647-2388 (ext. 1317)

Student Policy Handbook:
www.excelsior.edu/StudentPolicyHandbook

Excelsior College Learning Resources:
www.excelsior.edu/library
www.excelsior.edu/bookstore
www.excelsior.edu/MyExcelsior, click on the Resources tab

Student Online Success Guide
www.excelsior.edu/SuccessGuide

Excelsior College Online Writing Lab (OWL):
www.excelsior.edu/OWL

Excelsior College Community Resources:
www.excelsior.edu/MyExcelsior, click on Communities tab

and Ethics; Research and Evidence-Based Practice; Health Care Delivery Systems: Political, Social, and Economic Influences; and Community Nursing: Human Diversity and Public Health.

The nursing informatics specialty component of the curriculum focuses on the knowledge and skills required to implement the role of nurse informaticist in a variety of health care settings. Content covering how data and information can be used to create knowledge, concepts of database management in responding to a health care problem, assessment of information requirements of a system as it relates to client care and organizational operations, and selection and application of a decision making model are included in the three courses that make up the nursing informatics specialty component. This component consists of the following courses: *Data, Information and Knowledge; System Lifecycle; and Management Information for Decision Support.* The five-credit *Nursing Informatics Capstone* begins after the successful completion of 32 credits. This course has three components: an informatics project management experience, an online seminar, and a leadership retreat. It is designed to provide students with the opportunity to apply knowledge and competencies required throughout the program of study to actual and simulated information technology situations in health care. At the completion of the curriculum students are prepared to function in the role of nurse informaticist in a variety of health care settings.

Educational Outcomes

By completion of the program, the graduate will be able to

1. Articulate the role of the master's prepared nurse within the philosophical, ethical and theoretical framework of nursing science.
2. Use knowledge and analytical skills to appraise the contextual environment of nursing and informatics in order to inform and influence decision making.
3. Apply knowledge and skills from multiple disciplines in analysis and interpretation of data and management of projects.

4. Establish collaborative partnerships with diverse constituencies to pursue informatics-related goals and influence change.
5. Create an environment that facilitates knowledge and use of the data, information, and knowledge continuum.
6. Assume a leadership role in the health care organization to shape and implement change.
7. Use persuasive communication strategies with multiple stakeholders to address professional and health care system issues and achieve goals.
8. Develop approaches to the health care environment that address the cultural, ethical, legal, social, economic, and political requirements of diverse populations and stakeholders and impact the role of the informaticist.
9. Incorporate the scope of practice professional standards and specialty knowledge to implement the role of the master's-prepared nurse in a variety of health care settings.
10. Develop evidence-based practice using the research process and effectively engages in scholarship.
11. Take responsibility for lifelong learning, acts as a role model, maintains competence and makes contributions to the profession.
12. Use multiple strategies to assess and evaluate information system development in various settings across the health care continuum.

Policies Specific to the Master of Science Degree in Nursing

The Excelsior College Student Policy Handbook is your resource for understanding the academic and administrative policies that are important to your academic success. It includes a wide range of information from important federal policies, including your right to privacy, to grading policies and policies and procedures concerning refunds,

withdrawals, and other administrative issues. It is your responsibility to be familiar with these policies.

Policies and procedures that apply specifically to the master's programs in nursing are listed on the following pages. File your *Handbook* with your other important academic papers and this program catalog for easy reference.

Admission

Admission to the MS in nursing program is open to anyone who has earned a bachelor's degree from a regionally accredited institution and who is licensed to practice as a registered nurse.

International Student Admission Requirements

For the master's programs, in addition to official transcripts, nursing candidates must demonstrate that they have an equivalent U.S. Registered Nurse (RN) licensure. To be eligible for admission, the applicant must be a graduate from an approved school of nursing in their country of education and hold a current, unencumbered nursing license (if licensed in multiple jurisdictions and/or countries, all licenses must be unencumbered). All nursing school transcripts and all licenses will be validated by primary source verification.

Detailed application information and instructions can be found in our applications for admission.

English Language Proficiency Requirement

International candidates from non-English speaking countries must show evidence of sufficient English language proficiency through one of the following options:

1. Submission of TOEFL (Test of English as a Foreign Language) or IELTS (International English Language Testing System) taken within the last two years.
2. Successful completion of Excelsior College's **ENGx111: English Composition** examination or **ENGx110: College Writing** examination.
3. Submission of evidence of the successful completion of at least nine credit hours of academic work in courses delivered in English at an institution of higher education in the United States.

Time Limit

The Master of Science in nursing program is designed to be completed at your own pace. Students enrolled in the MS in nursing program are required to complete all degree requirements within a **seven-year period** of enrollment. This time limit on enrollment is cumulative if enrollment is not continuous. **Those who do not complete the program within this time may be subject to dismissal.**

Course Waiver

Up to 16 graduate-level credits from an accredited college or university may be applied toward course waiver in the MS in nursing program. Grades received must be B or better, and course work must not be more than five years old at the time of the student's application to the program. The Capstone Experience may not be waived. The Graduate Waiver Committee will compare content from the course the student has taken at another college to the Excelsior College course. There must be agreement with all major content areas for a waiver to be granted. In some cases, more than one prior course will be used to waive one of the MS courses. Official transcripts from the graduate school the student attended should be sent to the Excelsior College Office of Registration and Records. Students should send additional supportive descriptive materials such as syllabi or course outlines that address the content of the course the student completed.

Credit granted by an institution with candidacy status from one of the regional accrediting agencies is also applicable. Excelsior College refers to the *Accredited Institutions of Postsecondary Education* manual published for the Council for Higher Education Accreditation (CHEA) to verify the accreditation status of all postsecondary institutions.

Credit reported on a Pass/Fail or standard score system will not be accepted into the graduate program without written verification from the issuing institution that the course was passed with the equivalent of a B grade or better. Any course accepted for waiver will not be calculated into the GPA.

Master of Science in Nursing

Requirements for the Clinical Systems Management Specialization

PHASE I

Graduate Nursing Core **19 credits**

NUR 502: Theoretical Foundations of Nursing Practice 3 credits

Prerequisites: None

Theoretical Foundations of Nursing Practice focuses on the exploration of nursing knowledge development to include philosophy, theories, models, and concepts that have been designed to guide client care and research initiatives and to inform nursing practice. It provides approaches to analyze and critique a variety of theories in nursing and related fields.

NUR 512: Professional Role Development and Ethics 4 credits

Prerequisites: None

Professional Role Development and Ethics examines the theoretical foundations of role and ethics and focuses on the development of the role and ethics competencies of the master's-prepared nurse. It uses current health care issues and trends to analyze role characteristics and strategies specific to role implementation. The course fosters ethical sensitivity and skills in the prevention and resolution of ethical problems in health care.

NUR 513: Research and Evidence-Based Practice 4 credits

Prerequisites: Undergraduate research and statistics are highly recommended.

Statistics is a prerequisite or corequisite for students enrolled in the RN to MS program.

Research and Evidenced-Based Practice focuses on the research process and the analysis and evaluation of research to integrate the best evidence into practice. Emphasis is on the identification of generic and discipline-specific health care issues, synthesis of evidence, and translation of research to support and inform practice innovations.

NUR 531: Health Care Delivery Systems: Political, Social, and Economic Influences 4 credits

Prerequisites: None

Health Care Delivery Systems: Political, Social, and Economic Influences fosters understanding of the impact of health care policy, organizational design, and health care finance on the delivery of health care services. It reviews basic economic theory, historical and social trends, and events pivotal in the development of health care delivery as it relates to the master's-prepared nurse.

NUR 541: Community Nursing: Human Diversity and Public Health 4 credits

Prerequisites: None

Community Nursing: Human Diversity and Public Health focuses on identifying and responding to health-related concerns of diverse populations. The course explores the social, epidemiological, environmental, economic, cultural, and political influences on various communities' and populations' responses to health care and related challenges. It emphasizes building awareness and understanding of nursing's involvement in the ecology of health and designs strategies to promote health within the community, reduce health disparities, and prevent illness, disease, and injuries.

CHART 3

Master of Science in Nursing Requirements Specialization in Clinical Systems Management

See pages 46–49 for detailed explanation of degree requirements.

Total Degree Credits Required: 38

MS

Phase I

Credit
Hours

Graduate Nursing Core

NUR 502: Theoretical Foundations
of Nursing Practice

3

NUR 512: Professional Role Development
and Ethics

4

NUR 513: Research and Evidence-Based
Practice

4

NUR 531: Health Care Delivery Systems:
Political, Social, and Economic Influences

4

NUR 541: Community Nursing:
Human Diversity and Public Health

4

Total Graduate Nursing Core

19

Health Care Informatics Component

NUR 553: Issues in Health Care Informatics

2

NUR 680: Management Information
for Decision Support

3

Total Health Care Informatics Component

5

Total Phase I

24

Phase II

Credit
Hours

Clinical Systems Management Component

NUR 615: Management of Clinical Systems

3

NUR 625: Management of Fiscal and
Operational Systems

3

NUR 635: Leadership in Organizational
Systems

3

Total Clinical Systems Management Component

9

Phase III

Credit
Hours

NUR 644: Capstone Experience

5

Total Phase II and III

14

Health Care Informatics Component

5 credits

NUR 553: Issues in Health Care Informatics

2 Credits

Prerequisites: None

Issues in Health Care Informatics encourages students to engage in a dialogue among themselves and with experts in the field of health care and health care informatics in order to understand current issues. Using a single broad case study, students view the issues engendered by the case through the different lenses of ethics, politics, society, and the law.

NUR 680: Management Information for Decision Support

3 credits

Prerequisites: All nursing core courses

This course focuses on the identification, acquisition, analysis, interpretation and application of data, databases and decision making strategies for health care. It emphasizes decision support systems concepts, methodologies and technologies, and includes content on model management, knowledge management, and strategies to consider when selecting decision support systems.

PHASE II

Clinical Systems Management Component

9 credits

The clinical systems management component consists of three online courses totaling 9 credits. The courses that make up this component require synthesis of knowledge and application from the nursing core courses and the informatics courses. Therefore students should complete all of the Phase I courses before beginning the clinical systems management courses.

NUR 615: Management of Clinical Systems

3 Credits

Prerequisites: All nursing core and informatics courses.

Management of Clinical Systems focuses on the application of management principles, processes, techniques, and tools to shape a supportive environment of care and promote continuous improvement in clinical care systems.

NUR 625: Management of Fiscal and Operational Systems

3 Credits

Prerequisites: All nursing core and informatics courses.

Management of Fiscal and Operational Systems focuses on the application of management principles to design cost-effective clinical systems and achieve optimal resource use across the health care enterprise.

NUR 635: Leadership in Organizational Systems

3 Credits

Prerequisites: All nursing core and informatics courses.

Leadership in Organizational Systems focuses on critical examination of leadership styles, strategies, and competencies of the nurse executive in order to successfully manage the health care enterprise. It emphasizes leadership skills for strategic planning,



enhancing team performance and interdisciplinary collaboration, and creating a culture of quality performance.

PHASE III

Capstone Experience **5 credits**

NUR 644: The Capstone Experience 5 credits

The Capstone Experience is a five-credit course consisting of three integrated components: administrative project, online discussion, and leadership retreat. This culminating experience of the graduate nursing program is designed to provide students with an opportunity to apply knowledge and skills acquired throughout the program of study to actual and simulated leadership situations. Performance assessment of the students' attainment of program competencies is built into the three components.

Administrative Project

The administrative project provides students with the opportunity to directly experience leadership and management through observation of and participation on a management team in a health care organization. Under the guidance of a preceptor, students plan specific learning experiences and design a management project that is of value for both the student and the organization.

Online Seminar

The online seminar focuses on change management, development of strategic initiatives, and performance improvement. The online discussion provides students with the support and guidance of faculty and peers, while they are completing the administrative project.

Leadership Retreat

The two-day leadership retreat provides students an opportunity to assess and develop their leadership skills through active learning and evaluation strategies with the faculty and a peer group. Students

interact in a dynamic manner, receiving feedback for incorporation into the larger Capstone Experience.

Master of Science in Nursing

Requirements for the Nursing Informatics Specialization

PHASE I

Graduate Nursing Core **19 credits**

NUR 502: Theoretical Foundations of Nursing Practice 3 credits

Prerequisites: None

Theoretical Foundations of Nursing Practice focuses on the exploration of nursing knowledge development to include philosophy, theories, models, and concepts that have been designed to guide client care and research initiatives and to inform nursing practice. It provides approaches to analyze and critique a variety of theories in nursing and related fields.

NUR 512: Professional Role Development and Ethics 4 credits

Prerequisites: None

Professional Role Development and Ethics examines the theoretical foundations of role and ethics and focuses on the development of the role and ethics competencies of the master's-prepared nurse. It uses current health care issues and trends to analyze role characteristics and strategies specific to role implementation. The course fosters ethical sensitivity and skills in the prevention and resolution of ethical problems in health care.

MIS

Graduate Degree
Program

NUR 513: Research and Evidence-Based Practice **4 credits**

Prerequisites: Undergraduate research and statistics are highly recommended.

Statistics is a prerequisite or corequisite for students enrolled in the RN to MS program.

Research and Evidenced-based Practice focuses on the research process and the analysis and evaluation of research to integrate the best evidence into practice. Emphasis is on the identification of generic and discipline-specific health care issues, synthesis of evidence, and translation of research to support and inform practice innovations.

NUR 531: Health Care Delivery Systems: Political, Social, and Economic Influences **4 credits**

Prerequisites: None

Health Care Delivery Systems: Political, Social, and Economic Influences fosters understanding of the impact of health care policy, organizational design, and health care finance on the delivery of health care services. It reviews basic economic theory, historical and social trends, and events pivotal in the development of health care delivery as it relates to the master's-prepared nurse.

NUR 541: Community Nursing: Human Diversity and Public Health **4 credits**

Prerequisites: None

Community Nursing: Human Diversity and Public Health focuses on identifying and responding to health-related concerns of diverse populations. The course explores the social, epidemiological, environmental, economic, cultural, and political influences on various communities' and populations' responses to health care and related challenges. It emphasizes building awareness and understanding of nursing's involvement in the ecology of health and designs strategies to promote health within the community, reduce health disparities, and prevent illness, disease, and injuries.

Graduate Elective

3 credits

Graduate Elective **3 credits**

Prerequisites: None

In order to meet the required number of program credits, 3 graduate-level elective credits must be taken. These may be completed within the graduate program or transferred from other graduate programs if they are deemed eligible for credit in the Master of Science in nursing program. Advisor approval is required when choosing an elective course.

PHASE II

Nursing Informatics Component

10 credits

The nursing informatics component consists of three online courses totaling 10 credits. The courses that make up this component require synthesis of knowledge and application from the nursing core courses. Therefore, students must complete all of those courses before beginning the nursing informatics courses.

NUR 521: Data, Information and Knowledge **3 credits**

Prerequisites: All nursing core courses

The course focuses on the nature of data, the concepts of information and knowledge, and the principles of relational databases, systems operations and information systems.

NUR 551: System Lifecycle **4 credits**

Prerequisites: All nursing core courses

This course focuses on a structured approach to the selection and implementation of an information system. This structured approach is called the information system development lifecycle and the

CHART 4

Master of Science in Nursing Requirements Specialization in Nursing Informatics

See pages 49–52 for detailed explanation of degree requirements.

Total Degree Credits Required: 37

MS

Phase I

Credit
Hours

Graduate Nursing Core

NUR 502: Theoretical Foundations
of Nursing Practice

3

NUR 512: Professional Role
Development and Ethics

4

NUR 513: Research and Evidence-
Based Practice

4

NUR 531: Health Care Delivery Systems:
Political, Social, and Economic Influences

4

NUR 541: Community Nursing:
Human Diversity and Public Health

4

Total Graduate Nursing Core

19

Graduate Elective

3

Total Phase I

22

Phase II

Credit
Hours

Nursing Informatics Component

NUR 521: Data, Information and Knowledge

3

NUR 551: System Life Cycle

4

NUR 680: Management Information
for Decision Support

3

Total Nursing Informatics Component

10

Phase III

Credit
Hours

NUR 685: Nursing Informatics Capstone

5

Total Phase II and III

15

course incorporates the five phases of the life cycle: planning, analysis, design, implementation and evaluation.

**NUR 680: Management Information
for Decision Support** **3 credits**

Prerequisites: All nursing core courses

This course focuses on the identification, acquisition, analysis, interpretation and application of data, databases and decision making strategies for health care. It emphasizes decision support systems concepts, methodologies and technologies, and includes content on model management, knowledge management, and strategies to consider when selecting decision support systems.

PHASE III

Nursing Informatics Capstone

5 credits

**NUR 685:
Nursing Informatics Capstone** **5 credits**

Prerequisites: Completion of the nursing core courses and nursing informatics specialty component.

The *Nursing Informatics Capstone* is a five-credit course consisting of three integrated components: informatics project management experience, online seminar, and leadership retreat. This culminating experience of the graduate nursing program is designed to provide students with an opportunity to apply knowledge and skills acquired throughout the program of study to actual and simulated technology situations in health care. Performance assessment of the students' attainment of program competencies is built into the three components.

Master of Science in Nursing

Requirements for the Nursing Education Specialization

PHASE I

Graduate Nursing Core **19 credits**

**NUR 502: Theoretical
Foundations of Nursing Practice** **3 credits**

Prerequisites: None

Theoretical Foundations of Nursing Practice focuses on the exploration of nursing knowledge development to include philosophy, theories, models, and concepts that have been designed to guide client care and research initiatives and to inform nursing practice. It provides approaches to analyze and critique a variety of theories in nursing and related fields..

**NUR 512: Professional
Role Development and Ethics** **4 credits**

Prerequisites: None

Professional Role Development and Ethics examines the theoretical foundations of role and ethics and focuses on the development of the role and ethics competencies of the master's-prepared nurse. It uses current health care issues and trends to analyze role characteristics and strategies specific to role implementation. The course fosters ethical sensitivity and skills in the prevention and resolution of ethical problems in health care.

NUR 513: Research and Evidence-Based Practice **4 credits**

Prerequisites: Undergraduate research and statistics are highly recommended.

Statistics is a prerequisite or corequisite for students enrolled in the RN to MS program.

Research and Evidenced-based Practice focuses on the research process and the analysis and evaluation of research to integrate the best evidence into practice. Emphasis is on the identification of generic and discipline-specific health care issues, synthesis of evidence, and translation of research to support and inform practice innovations.

NUR 531: Health Care Delivery Systems: Political, Social, and Economic Influences **4 credits**

Prerequisites: None

Health Care Delivery Systems: Political, Social, and Economic Influences fosters understanding of the impact of health care policy, organizational design, and health care finance on the delivery of health care services. It reviews basic economic theory, historical and social trends, and events pivotal in the development of health care delivery as it relates to the master's-prepared nurse.

NUR 541: Community Nursing: Human Diversity and Public Health **4 credits**

Prerequisites: None

Community Nursing: Human Diversity and Public Health focuses on identifying and responding to health-related concerns of diverse populations. The course explores the social, epidemiological, environmental, economic, cultural, and political influences on various communities' and populations' responses to health care and related challenges. It emphasizes building awareness and understanding of nursing's involvement in the ecology of health and designs strategies to promote health within the community, reduce health disparities, and prevent illness, disease, and injuries.

Graduate Elective

3 credits

Graduate Elective

3 credits

Prerequisites: None

In order to meet the required number of program credits, 3 graduate-level elective credits must be taken. These may be completed within the graduate program or transferred from other graduate programs if they are deemed eligible for credit in the Master of Science in nursing program. Advisor approval is required when choosing an elective course.

PHASE II

Nursing Education Component

12 credits

The nursing education component consists of four online courses totaling 12 credits. The courses that make up this component require synthesis of knowledge and application from the nursing core courses. Therefore, students should complete all of those courses before beginning the nursing education courses.

NUR 650: Designing a Student Learning Environment **3 Credits**

Prerequisites: All nursing core courses

Designing a Student Learning Environment focuses on the creation of teaching-learning environments and the integration of the role of faculty/educator, uniqueness of the student learner, the setting and context within which the learning occurs, the teaching-learning strategies used to promote nursing education, and evaluation of the effectiveness of this process.

MS

Graduate Degree Program

NUR 655: Curriculum and Program Planning **3 Credits**

Prerequisites: All nursing core courses

Curriculum and Program Planning focuses on curriculum and syllabus/program development including theoretical frameworks and design, philosophical foundations and selection of learning experiences to achieve outcomes.

NUR 660: Evaluation and Assessment in Nursing Education **3 Credits**

Prerequisites: All nursing core courses

Evaluation and Assessment in Nursing Education is designed to introduce the student to the evaluation process including test construction, clinical performance assessment, program evaluation, and strategies for evaluating learning outcomes.

NUR 665: Theories and Methods of Teaching with Technologies **3 Credits**

Prerequisites: All nursing core courses

Theories and Methods of Teaching with Technologies provides an opportunity to acquire knowledge and develop skills for using technologies to support the teaching–learning process including using media, multimedia, and technology-rich and online learning environments.

Master of Science in Nursing Advising Team:

Toll free at 888-647-2388 (ext. 1317)

Excelsior College Community Resources:

www.excelsior.edu/MyExcelsior, click on Communities tab

Course/Exam Approval:

www.excelsior.edu/MessageCenter

Course Registration:

www.excelsior.edu/courses

Excelsior College Learning Resources:

www.excelsior.edu/library

www.excelsior.edu/bookstore

www.excelsior.edu/MyExcelsior, click on the Resources tab

Excelsior College Community Resources:

www.excelsior.edu/MyExcelsior, click on Communities tab

PHASE III

Nursing Education Capstone

5 credits

NUR 670: Nursing Education Capstone **5 credits**

The *Nursing Education Capstone* is a five-credit course consisting of three integrated components: educational/teaching experience, online seminar and leadership retreat. This culminating experience of the graduate nursing program is designed to provide students with an opportunity to apply knowledge and competencies acquired throughout the program of study to actual and simulated educational situations. Performance assessment of the students' attainment of program competencies is built into the three components.



CHART 5

Master of Science in Nursing Requirements Specialization in Nursing Education

See pages 52–54 for detailed explanation of degree requirements.

Total Degree Credits Required: 39

MS

Phase I

Credit
Hours

Graduate Nursing Core

NUR 502: Theoretical Foundations
of Nursing Practice

3

NUR 512: Professional Role
Development and Ethics

4

NUR 513: Research and Evidence-
Based Practice

4

NUR 531: Health Care Delivery Systems:
Political, Social, and Economic Influences

4

NUR 541: Community Nursing:
Human Diversity and Public Health

4

Total Graduate Nursing Core

19

Graduate Elective
(related to the specialization)

3

Total Phase I

22

Phase II

Credit
Hours

Nursing Education Component

NUR 650: Designing a
Student Learning Environment

3

NUR 655: Curriculum and Program Planning

3

NUR 660: Evaluation and Assessment
in Nursing Education

3

NUR 665: Theories and Methods of
Teaching with Technologies

3

Total Nursing Education Component

12

Phase III

Credit
Hours

NUR 670: Nursing Education Capstone

5

Total Phase II and III

17

Graduate Programs in Nursing

RN to Master of Science in Nursing Program

The RN to Master of Science (RN to MS) in nursing program is designed to allow registered nurses to work toward a Master of Science in nursing degree, with a specialization in Clinical Systems Management, Nursing Education, or Nursing Informatics while completing requirements for the Bachelor of Science in nursing degree. With this option, students take graduate-level courses that replace some of the undergraduate requirements. Charts 6, 7, and 8 (pages 59, 60, and 61) offer a visual representation of the requirements for the three specializations of the RN to MS in nursing program. This program is designed for students who have learning validated by prior education, successfully completed the NCLEX-RN®, a current license to practice as a registered nurse, and who have not earned a bachelor's degree in any field.

Policies Specific to the RN to MS in Nursing Program

The Excelsior College Student Policy Handbook is your resource for understanding the academic and administrative policies that are important to your academic success. It includes a wide range of information from important federal policies, including your right to privacy, to grading policies and policies and procedures concerning refunds, withdrawals, and other administrative issues. It is your responsibility to be familiar with these policies.

Additional policies and procedures that apply specifically to the RN to MS in nursing program are listed on the following pages. File your *Student Policy Handbook* with your other important academic papers and this program catalog for easy reference (see link below).

Admission

The RN to MS in nursing program is designed for registered nurses who have learning validated by prior education, have successfully completed the NCLEX-RN®, have a current license to practice as a registered in the United States, and have not earned a bachelor's degree in any field.

International Student Admission Requirements

For the RN to MS in nursing program, in addition to official transcripts, nursing candidates must demonstrate that they have an equivalent U.S. Registered Nurse (RN) licensure. To be eligible for admission, the applicant must be a graduate from an approved school of nursing in their country of education and hold a current, unencumbered nursing license (if licensed in multiple jurisdictions and/or countries, all licenses must be unencumbered). All nursing school transcripts and all licenses will be validated by primary source verification.

International candidates must apply to the Commission on Graduate of Foreign Nursing Schools (CGFNS) New York Credential Verification Service (NYCVS) and the New York State Education Department (NYSED) to have their foreign nursing education evaluated and approved by the aforementioned organizations.

Detailed application information and instructions can be found in our applications for admission.

English Language Proficiency Requirement

International candidates from non-English speaking countries must show evidence of sufficient English language proficiency through one of the following options:

1. Submission of TOEFL (Test of English as a Foreign Language) or IELTS (International English Language Testing System) taken within the last two years.
2. Successful completion of Excelsior College's **ENGx111: English Composition** examination or **ENGx110: College Writing** examination.
3. Submission of evidence of the successful completion of at least nine credit hours of academic work in courses delivered in English at an institution of higher education in the United States.

Time Limit

The RN to MS in nursing program is designed to be completed at your own pace. Students enrolled in the RN to MS in nursing program on or after September 1, 2001, are required to complete all degree requirements within a twelve-year period of enrollment. This time limit on enrollment is cumulative if enrollment is not continuous. Those who do not complete the program within this time may be subject to dismissal.

Time Limit—General Education Component

There is no time limit on general education courses or examinations submitted for transfer credit. Credits earned at regionally accredited institutions or through approved examination programs and for which official transcripts are available will be evaluated regardless of when they were earned.

Time Limit—Undergraduate Nursing Component

Credit submitted from nursing examinations and nursing courses for purposes of meeting requirements for the nursing degree must have been earned within five years prior to the date of enrollment in an Excelsior College nursing program. There is no time limit on the nursing credits as long as students remain actively enrolled in an Excelsior College nursing program. Should enrollment lapse and you

MS

Graduate Degree Program

need to reenroll, you will lose credit for any nursing examinations taken more than five years prior to reenrollment. If you have waived any of the nursing requirements during a previous enrollment, you will not automatically receive waiver of those requirements when reenrolling. The Excelsior College nursing faculty may need to review the courses again and you may lose the waiver completely, depending on the age of the course and current content requirements.

Course Load Requirement

The undergraduate portion of the RN-MS degree is self-paced. Once students reach graduate status, they must complete a minimum of two courses, or 6 credits per enrollment year, to remain enrolled in the program, unless a leave of absence has been requested in writing.

Minimum Academic Average— Graduate Courses

Graduate students are required to have a 3.0 grade point average to graduate from the program. The graduate grade point average is calculated separately from the undergraduate grade point average.

Your Personalized MyExcelsior Account:

www.excelsior.edu/MyExcelsior

RN-MS in Nursing Program Advising Team:

Toll free 888-647-2388 (ext. 1314)

College Publications, Applications, and Forms:

www.excelsior.edu/publications

Student Policy Handbook:

www.excelsior.edu/StudentPolicyHandbook

Fee Schedules, Financial Aid, and Scholarships:

www.excelsior.edu/fees

www.excelsior.edu/FinancialAid

www.excelsior.edu/scholarships

Excelsior College Learning Resources:

www.excelsior.edu/library

www.excelsior.edu/bookstore

www.excelsior.edu/MyExcelsior, click on the Resources tab

Student Online Success Guide

www.excelsior.edu/SuccessGuide

Excelsior College Online Writing Lab (OWL):

www.excelsior.edu/OWL

Free Writing Resources (*scheduled to debut Fall 2011*),

Online Software Skills Training through Atomic Learning

(*EC course and exam registrants only*),

Online Tutoring Services through SMARTHINKING™

(*EC course and exam registrants only*)

www.excelsior.edu/MyExcelsior, click on the Resources tab

Excelsior College Community Resources:

www.excelsior.edu/MyExcelsior, click on Communities tab

CHART 6

Degree Requirements: RN to MS in Nursing Specialization in Clinical Systems Management

See pages 62–63 for detailed explanation of degree requirements.

Total RN to MS Credits Required: 142

RN to MS

Baccalaureate Phase

General Education Component	Credit Hours
Humanities	12
Written English Requirement	6
Social Sciences/History	15
Natural Sciences/Mathematics	15
Arts & Sciences Electives	12
Total General Education	60

Nursing Component	Credit Hours
30 semester hours of nursing credit granted for prior learning validated by nursing education and successful completion of the NCLEX-RN®.	30
NURx420: Management in Nursing Examination	4
NUR 442: Health Assessment and Promotion in Nursing Practice	4
NUR 446: Teaching and Learning in a Diverse Society	3
NUR 435: Professional Socialization OR NUR 436: Professional Transitions **	3
GRADUATE NURSING CORE	
NUR 513: Research and Evidence-Based Practice*	4
NUR 531: Health Care Delivery Systems: Political, Social, and Economic Influences	4
NUR 541: Community Nursing: Human Diversity and Public Health	4
Total Nursing Baccalaureate Phase	56

* Statistics is a prerequisite for NUR 513.

** Effective November 2011, NUR 436 replaces NUR 435.

Master of Science Courses

Once students complete the bachelor's component of the RN-MS in nursing program, they become master's degree students and are eligible to complete these graduate-level components.

Phase I	Credit Hours
GRADUATE NURSING CORE	
NUR 502: Theoretical Foundations of Nursing Practice	3
NUR 512: Professional Role Development and Ethics	4
HEALTH CARE INFORMATICS COMPONENT	
NUR 553: Issues in Health Care Informatics	2
NUR 680: Management Information for Decision Support	3

Phase II

CLINICAL SYSTEMS MANAGEMENT COMPONENT	
NUR 615: Management of Clinical Systems	3
NUR 625: Management of Fiscal and Operational Systems	3
NUR 635: Leadership in Organizational Systems	3

Phase III

NUR 644: Capstone Experience	5
Total Graduate Program	26

CHART 7

Degree Requirements: RN to MS in Nursing Specialization in Nursing Informatics

See pages 62–63 for detailed explanation of degree requirements.

Total RN to MS Credits Required: 141

RN to MS

Baccalaureate Phase

General Education Component	Credit Hours
Humanities	12
Written English Requirement	6
Social Sciences/History	15
Natural Sciences/Mathematics	15
Arts & Sciences Electives	12
Total General Education	60

Nursing Component	Credit Hours
30 semester hours of nursing credit granted for prior learning validated by nursing education and successful completion of the NCLEX-RN®.	30
NURx420: Management in Nursing Examination	4
NUR 442: Health Assessment and Promotion in Nursing Practice	4
NUR 446: Teaching and Learning in a Diverse Society	3
NUR 435: Professional Socialization OR NUR 436: Professional Transitions **	3
GRADUATE NURSING CORE	
NUR 513: Research and Evidence-Based Practice*	4
NUR 531: Health Care Delivery Systems: Political, Social, and Economic Influences	4
NUR 541: Community Nursing: Human Diversity and Public Health	4
Total Nursing Baccalaureate Phase	56

* Statistics is a prerequisite for NUR 513.

** Effective November 2011, NUR 436 replaces NUR 435.

Master of Science Courses

Once students complete the baccalaureate component of the RN-MS in nursing program, they become master's degree students and are eligible to complete these graduate-level components.

Phase I	Credit Hours
GRADUATE NURSING CORE	
NUR 502: Theoretical Foundations of Nursing Practice	3
NUR 512: Professional Role Development and Ethics	4
Graduate Elective (related to the specialization)	3

Phase II	Credit Hours
NURSING INFORMATICS COMPONENT	
NUR 521: Data, Information and Knowledge	3
NUR 551: System Lifecycle	4
NUR 680: Management Information for Decision Support	3

Phase III	Credit Hours
NUR 685: Nursing Informatics Capstone	5
Total Graduate Program	25

CHART 8

Degree Requirements: RN to MS in Nursing Specialization in Nursing Education

See pages 62–63 for detailed explanation of degree requirements.

Total RN to MS Credits Required: 143

RN to MS

Baccalaureate Phase

General Education Component

	Credit Hours
Humanities	12
Written English Requirement	6
Social Sciences/History	15
Natural Sciences/Mathematics	15
Arts & Sciences Electives	12

Total General Education

60

Nursing Component

	Credit Hours
30 semester hours of nursing credit granted for prior learning validated by nursing education and successful completion of the NCLEX-RN®.	30
NURx420: Management in Nursing Examination	4
NUR 442: Health Assessment and Promotion in Nursing Practice	4
NUR 446: Teaching and Learning in a Diverse Society	3
NUR 435: Professional Socialization OR NUR 436: Professional Transitions **	3
GRADUATE NURSING CORE	
NUR 513: Research and Evidence-Based Practice*	4
NUR 531: Health Care Delivery Systems: Political, Social, and Economic Influences	4
NUR 541: Community Nursing: Human Diversity and Public Health	4
Total Nursing Baccalaureate Phase**	56

* Statistics is a prerequisite for NUR 513.

** Effective November 2011, NUR 436 replaces NUR 435.

Master of Science Courses

Once students complete the baccalaureate component of the RN-MS in nursing program, they become master's degree students and are eligible to complete these graduate-level components.

Phase I

GRADUATE NURSING CORE

NUR 502: Theoretical Foundations of Nursing Practice

3

NUR 512: Professional Role Development and Ethics

4

Graduate Elective
(related to the specialization)

3

Phase II

NURSING EDUCATION COMPONENT

NUR 650: Designing a Student-Learning Environment

3

NUR 655: Curriculum and Program Planning

3

NUR 660: Evaluation and Assessment in Nursing Education

3

NUR 665: Theories and Methods of Teaching With Technologies

3

Phase III

NUR 670: Nursing Education Capstone

5

Total Graduate Program

27

RN to MS in Nursing Requirements

The RN to MS in nursing program requires completion of **141–143** credits

— **60** general education credits and **81–83** nursing credits (depending on specialization).



You are subject to the degree requirements in effect at the time of your enrollment or program/degree transfer (program transfer refers to change from one school to another; degree transfer refers to changing degrees within the same school).

The faculty reserves the right to make changes in curricular requirements as necessary to reflect current professional practice. Changes may affect both enrolled and prospective students. It is your responsibility to keep informed of such changes. We make every effort to inform you of changes as they occur. Current information about degree requirements is posted on our Web site. Information about changes to degree requirements is also made available on our Web site.

General Education Component

60 credits

See pages 30–32 in the undergraduate section of this catalog for detailed information about undergraduate general education requirements. Note that students who complete the RN to MS in nursing program are not required to complete the one-credit Information Literacy requirement.

Nursing Component

81, 82, or 83 credits

(depending on MS Specialization)

The nursing component of the RN to MS degree includes bachelor's requirements and graduate-level requirements. Policies on repeating exams and criteria for waiver of bachelor's requirements are listed on page 37 of this catalog.

Baccalaureate Phase

The bachelor's component tests knowledge and professional competencies equivalent to those expected of graduates of campus-based BS in nursing programs. Emphasis is placed on integration of nursing knowledge and related sciences in a variety of complex situations related to the nursing care of individuals, families, and communities with major health problems.

Students eligible for the RN to MS program will be granted a minimum of 30 semester hours of credits for prior learning that is validated by successful completion of the National Council Licensure Examination for Registered Nurses (NCLEX-RN®) and learning validated by prior education.

The requirements in the bachelor's component of the RN to MS program that are common to the Bachelor of Science in nursing degree program are the *NURx420: Management in Nursing Examination*, *NUR 442: Health Assessment and Promotion in Nursing Practice*, *NUR 446: Teaching and Learning in a Diverse Society*, and *NUR 435: Professional Socialization OR NUR 436 Professional Transitions**.

* Effective November 2011, NUR 436 replaces NUR 435.

RN to MS students complete three graduate-level online courses as part of their undergraduate requirements: *NUR 513: Research and Evidence-Based Practice*; *NUR 531: Health Care Delivery Systems: Political, Social, and Economic Influences*; and *NUR 541: Community Nursing: Human Diversity and Public Health*.

RN to MS students do not complete the undergraduate *Community-Focused Nursing and Research in Nursing*, or the *Capstone Course* requirement. Their study of community health nursing, research, and capstone content are at the graduate level.

Students who “stop out” of the RN to MS degree in order to be awarded the BS may be required to complete additional credits in nursing electives to ensure that their nursing credits for the bachelor’s degree total at least 60. Students who continue without “stopping out” will be awarded the bachelor’s and master’s degrees upon completion of the entire program.

Nursing courses from hospital diploma programs both in the United States and abroad are not eligible for transfer credit.

Bachelor’s Phase Requirements

(See the bachelor’s degree program section, pages 33–34, for descriptions of the following requirements.)

NURx420: Management in Nursing Examination **4 credits**

NUR 442: Health Assessment and Promotion in Nursing Practice **4 credits**

NUR 446: Teaching and Learning in a Diverse Society **3 credits**

NUR 435: Professional Socialization **3 credits***
OR
NUR 436 Professional Transitions **3 credits***

* Effective November 2011, NUR 436 replaces NUR 435.

(See the graduate degree program section, page 46, for descriptions of the following courses.)

NUR 513: Research and Evidence-Based Practice **4 credits**

NUR 531: Health Care Delivery Systems: Political, Social, and Economic Influences **4 credits**

NUR 541: Community Nursing: Human Diversity and Public Health **4 credits**

Graduate-Level Phases

Students who complete the bachelor’s component are granted graduate status. Having completed 12 of the 37–39 master’s-level credits as undergraduates, they then complete the remaining credits of the master’s degree program in the Clinical Systems Management, Nursing Education, or Nursing Informatics Specialization. See pages 46–54 for descriptions of required courses.

RN-MS in Nursing Program Advising Team:

Toll free 888-647-2388 (ext. 1314)

Course/Exam Approval:

www.excelsior.edu/MessageCenter

Course Registration:

www.excelsior.edu/courses

Excelsior College Learning Resources:

www.excelsior.edu/library

www.excelsior.edu/bookstore

www.excelsior.edu/MyExcelsior, click on the Resources tab

Student Online Success Guide

www.excelsior.edu/SuccessGuide

Excelsior College Online Writing Lab (OWL):

www.excelsior.edu/OWL

Excelsior College Community Resources:

www.excelsior.edu/MyExcelsiorCommunity

MS

Graduate Degree Program

Certificates in Nursing

Graduate Certificate in Nursing Management

This program was designed to meet the needs of nursing professionals seeking leadership, administration, and executive positions in a variety of healthcare settings. The certificate program also meets the needs of registered nurses currently in management who wish to pursue further learning and career advancement. The 12-credit graduate-level certificate program consists of four required courses. The 15-week courses are delivered entirely online for maximum flexibility.

Program Outcomes

By completion of the program, the student will be able to

- establish collaborative partnerships with interdisciplinary teams to pursue health-related goals and influence change.
- apply principles and theories of performance improvement, systems thinking, health policy, and resource allocation to manage the health-care enterprise or outcomes.
- use knowledge and analytical skills to appraise the contextual environment of health care in order to inform and influence decision making across the health care system.
- apply knowledge and skills from multiple disciplines in the use of clinical management information systems to improve client (defined as individuals, families, aggregates, communities, and systems) care.

Admission

Prospective students must have an RN license and

- a bachelor's degree in nursing with at least one year of leadership experience
- or
- a bachelor's degree with a non-nursing major with at least one year of leadership experience

Required Courses

NUR 615: Management of Clinical Systems

3 credits

Management of Clinical Systems focuses on the application of management principles, processes, techniques, and tools to shape a supportive environment of care and promote continuous improvement in clinical care systems. It emphasizes environments of care, political, economic, technological and social influences on care, workforce management, improvement initiatives, managing information, systems thinking, change theory, and health policy.

NUR 625: Management of Fiscal and Operational Systems

3 credits

Management of Fiscal and Operational Systems focuses on the application of management principles to design cost-effective clinical systems and to achieve optimal resource use across the health care enterprise. It emphasizes the integration of care, quality and finance to design cost-effective clinical systems.

NUR 635: Leadership of the Organizational System

3 credits

Leadership of the Organizational System focuses on critical examination of leadership styles, strategies, and competencies of the nurse executive in order to successfully manage the health care enterprise. It emphasizes leadership skills for strategic planning, enhancing team performance and interdisciplinary collaboration, and creating a culture of quality performance and quality initiatives.

NUR 680: Management Information for Decision Support

3 credits

Management Information for Decision Support focuses on the identification, acquisition, analysis, interpretation and application of data, databases and decision making strategies for healthcare. It emphasizes decision support systems concepts, methodologies and technologies, and includes content on model management, knowledge management, and strategies to consider when selecting decision support systems.

Certificates in Nursing

Post-Master's Certificate in Nursing Education

This program was designed to meet the needs of nursing professionals in academic or clinical teaching roles who wish to pursue further learning in nursing education and to address the critical shortage of nurses in teaching roles. The certificate program consists of 12 graduate-level credits with three required courses and the choice of one elective from two other specific courses. The 15-week courses are delivered entirely online for maximum student flexibility.

Program Outcomes

By completion of the program the student will be able to

- apply knowledge and skills from multiple disciplines in designing curricula and formatting program outcomes
- create an educational environment that facilitates student learning and achieves desired outcomes
- develop approaches to the educational environment that address the cultural, ethical, legal, social, economic and political requirements of diverse populations and stakeholders and impact the educator role
- use multiple strategies to assess and evaluate learning in various settings
- develop knowledge and skills to prepare for the National League for Nurses Certified Nurse Educator (CNE) examination

Admission

Prospective students must have an RN license and

- a bachelor's degree in nursing and a Master's degree in nursing or a related field
- or
- a bachelor's degree with a non-nursing major and a Master's degree in nursing

Required Courses

NUR 650 Designing a Student Learning Environment

3 credits

Designing a Student Learning Environment focuses on the creation of teaching-learning environments and the integration of the role of faculty/educator, the uniqueness of the student learner, the setting and context within which the learning occurs, the teaching-learning strategies used to promote nursing education, and the evaluation of the effectiveness of this process.

NUR 655 Curriculum and Program Planning

3 credits

Curriculum and Program Planning focuses on curriculum and syllabus/program development, including theoretical frameworks and design, philosophical foundations, and selection of learning experiences to achieve outcomes.

NUR 660 Evaluation and Assessment In Nursing Education

3 credits

Evaluation and Assessment in Nursing Education is designed to introduce the student to the evaluation process including test construction, clinical performance assessment, program evaluation, and strategies for evaluating learning outcomes.

Elective Courses (choose one)

NUR 665 Theories and Methods of Teaching with Technologies

3 credits

Theories and Methods of Teaching with Technologies provides an opportunity to acquire knowledge and develop skills for using technologies to support the teaching-learning process including using media, multimedia, and technology-rich and online learning environments.

NUR 690 Leadership in Nursing Education

3 credits

Leadership in Nursing Education is designed to provide students the opportunity to apply knowledge and competencies acquired during the program of study to actual educational situations and to incorporate formal leadership roles into their academic career trajectory.

Excelsior College Board of Trustees

Chair **Richard Yep, CAE**
Executive Director and CEO
American Counseling Association
Alexandria, VA

Polly Baca, BA

President & CEO
Baca Barragan & Perez Associates
Denver, CO

Helen Benjamin, PhD

Chancellor
Contra Costa Community College District
Martinez, CA

Linda Davila, CFM, CIMA, Vice Chair

Vice President
Wealth Management Advisor
Merrill Lynch
New York, NY

Gloria R. Gelmann, PhD, EdD, RN

Associate Professor
Seton Hall University
South Orange, NJ

The Honorable Bryanne Hamill

Family Court Judge (Ret.)
Kings County, State of New York
New York, NY

William G. Harris, PhD

CEO
Association of Test Publishers
Washington, DC

Harold (Bud) L. Hodgkinson, EdD

President
Hodgkinson Associates, LTD
Demographic Studies and Presentations
Alexandria, VA

William T. Moran, BS

President
W.T. Moran Corporation
Austin, TX

Jerry L. Neff, BS

Brig. General, ARNGUS (Ret.)
Regional President, M&I Bank (Ret.)
Bradenton, FL

Mary O'Connor, PhD, RN, FACHE

Associate Professor
Notre Dame of Maryland University
Baltimore, MD

David Olikier, MA

President & CEO
MVP Health Care
Schenectady, NY

Sharon Richie-Melvan, PhD

Colonel, U.S. Army (Ret.)
President and CEO
Crossroads Testing & Coaching,
a Division of SIR Consulting Services
Inverness, FL

Alvin Schexnider, PhD

President
Thomas Nelson Community College
Hampton, VA
President
Schexnider & Associates, LLC
Chesapeake, VA

Harry L. Staley, MA, CIO, Treasurer

Owner Operator—McDonald's
Anna'D. Foods, Inc.
Annandale, NJ

Pamela J. Tate, MA, MS

President
The Council for Adult and
Experiential Learning (CAEL)
Chicago, IL

André Vacroux, PhD

Former President
National Technological University
Dean Emeritus, Engineering at Southern
Methodist University
Dallas, TX

John R. Wetsch, PhD, PMP

IT Director, Application Service Delivery
North Carolina Department of Revenue
Raleigh, NC

Kathryn J. Whitmire, MS, CPA

Former Mayor of Houston
Senior Fellow
Burns Academy of Leadership
University of Maryland
Haleiwa, HI

Ex Officio

Kathleen Butler, MS

President
Excelsior College Alumni Association
Livermore, CA

Marck L. Beggs, PhD

Professor of English
Graduate School
Henderson State University
Arkadelphia, AR
Chair
President's Faculty Advisory Council

John F. Ebersole, LPD

President
Excelsior College
Albany, NY

Joseph B. Porter, Esq., Secretary

Vice President for Legal and Governmental
Affairs and General Counsel
Excelsior College
Albany, NY

Emeriti

William E. Cox, EdD

President
Cox, Matthews, and Associates, Inc.
Fairfax, VA

Arthur J. Gregg, BS

Lt. General, U.S. Army (Ret.)
Dumfries, VA

Robert E. Kinsinger, EdD

Consultant
National Service Corps of Retired
Executives (SCORE)
Vice President (Ret.)
W.K. Kellogg Foundation
Twain Harte, CA

Jean M. Smith, BA

Vice President (Ret.)
J.P. Morgan Chase
Chase Community Development
Corporation
New York, NY

Joshua L. Smith, EdD

Professor and Director (Ret.)
Program in Higher Education and Center
for Urban Community College Leadership
New York University, School of Education
New York, NY

Lawrence E. Vertucci, BA

Executive Vice President and
Regional President (Ret.)
HSBC Bank, USA
Albany, NY

John F. Ebersole, LPD, President
Mary Beth Hanner, PhD, RN
Provost and Chief Academic Officer
J. Patrick Jones, PhD, Vice Provost
Murray H. Block, EdD, Chief of Staff

Excelsior College Executive and Academic Leadership Staff

Wayne Brown, PhD

Vice President, Extended Education

Cathy S. Kushner, MA Ed

Vice President for Institutional
Advancement

Craig Maslowsky, MBA

Vice President for Enrollment
Management and Marketing

Edmund McTernan, MBA

Vice President of Human Resources

Susan O'Hern, BA

Vice President of Information
Technology

John M. Pontius, Jr., CPA, MBA

Vice President for Finance and
Administration

Joseph B. Porter, Esq.

Vice President for Legal and
Governmental Affairs and General
Counsel

Scott Dalrymple, PhD

Dean, School of Liberal Arts

Jane LeClair, EdD

Dean, School of
Business and Technology

Mary Lee Pollard, PhD, RN

Dean, School of Nursing

Deborah Sopczyk, PhD, RN

Dean, School of Health Sciences

George Timmons, PhD

Dean of Online Education
and Learning Services

Donna L. Cooper, MS Ed

Director of Financial Aid and
Veterans Services Certifying Official

Betsy DePersis, MA

Director of Advising Services
Office of the Provost

Susan A. Dewan, MBA

Executive Director
Center for vMilitary Education

Christina Yang, MBA

Coordinator of
Academic Partnerships

Lori Morano, MS Ed

Registrar

Ruth Olmsted, PhD

Assistant Dean, Center for
Educational Measurement

School of Nursing

Academic Leadership Staff

Sandra A. DerGurahian, MS Ed

Director of Advisement and Evaluation
School of Nursing

Patricia Edwards, EdD, RN, NEA-BC, ANEF

Associate Dean for Nursing Research
School of Nursing

Karen Fagan, MS Ed

Director of Nursing Admissions and
Evaluation, School of Nursing

Kim Hedley, MS, RN, CPHQ

Assistant Dean
Associate Degree Nursing Programs
School of Nursing

Laurie Nagelsmith, PhD, RN

Associate Dean
School of Nursing

Deborah Rastinehad, PhD, RN

Program Director
Graduate Programs in Nursing

Vacant

Director, Baccalaureate/RN to
MS Program in Nursing

Christine Early-Nadler, MS Ed

Director of Disability Services

Kathy Moran, BS

Ombudsperson

Excelsior College School of Nursing Faculty and Consulting Faculty

Susan E. Abbe, PhD, RN

(Higher Education Administration,
University of Connecticut)
Nursing Curriculum Specialist Connecticut
Community College System Hartford, CT

Ida Mary Androwich, PhD, RN, FAAN

(Health Resource Management,
University of Illinois at Chicago) Professor,
Community Health and Administrative
Nursing
Niehoff School of Nursing Loyola
University, Chicago, IL

Sharon A. Aronovitch, PhD, RN

(Nursing, Adelphi University)
Nursing Faculty Member
Excelsior College, Albany, NY

Elizabeth A. Ayello,

PhD, RN, APRN, BC, FAAN
(Nursing, New York University)
Executive Editor, WCET Journal

Susan B. Bastable, EdD, RN

(Curriculum and Instruction, Teachers
College, Columbia University)
Professor and Chair,
Department of Nursing
Le Moyne College, Syracuse, NY

Joanne Bonesteel, MS, RN

(Cardiovascular Clinical Specialization,
Boston College, Boston, MA)
Nursing Faculty Member
Excelsior College, Albany, NY

M. Sharon Boni, PhD, RN

(Cardiovascular, The Catholic
University of America, Washington, DC)
Dean, School of Nursing & Allied Health
Administration
Fairmont State University, Fairmont, WV

William K. Cody, PhD, RN, FAAN

(Nursing Science,
University of South Carolina)
Dean, Presbyterian School of Nursing at
Queens University of Charlotte, NC

Ivory C. Coleman, EdD, RN

(Transcultural Health Nursing,
The Pennsylvania State University)
Professor, Nursing Department Community
College of Philadelphia, Philadelphia, PA

Robin Dewald, PhD, RN

(Nursing Education, Capella University)
Nursing Faculty Member,
Excelsior College, Albany, NY

Kathie Doyle, MS, RN

(Clinical Nurse Specialist,
Medical Surgical Nursing,
The Sage Colleges)
Nursing Faculty Member
Excelsior College, Albany, NY

Patricia Edwards, EdD, RN, NEA-BC, ANEF

(Rehabilitative Administration,
Northeastern University, Boston, MA)
Associate Dean for Nursing Research
Excelsior College, Albany, NY

Kim Hedley, MS, RN

(Nursing Administration,
The Sage Colleges, Troy, NY)
Assistant Dean, School of Nursing
Excelsior College, Albany, NY

Pat Irons, MA, RN

(Teaching and Administration in Associate
Degree Nursing, Teachers College,
Columbia University)
Professor Emerita Queensborough
Community College

Beverly K. Johnson, PhD, RN

(Nursing, University of Texas at Austin)
Associate Professor, College of Nursing
Seattle University, Seattle, WA

Kathleen Kennedy, MS, RN

(Medical-Surgical/Administration, Russell
Sage College)
Assistant Professor, Nursing Department
The Sage Colleges, Troy, NY

Ellen LaDieu, MS, RN

(Community Health Administration,
Russell Sage College)
Nursing Faculty Member
Excelsior College, Albany, NY

Mary Jo LaPosta, PhD, RN

(Parent-Child Nursing, Adelphi University)
Vice President and Chief Nursing Officer,
Saratoga Hospital, Saratoga, NY

Jacqueline A. Michaels, RN, MS, CCRN

(Medical-Surgical/Teaching, Sage
Graduate School)
Nursing Faculty Member
Excelsior College, Albany, NY

Frances Donovan Monahan, PhD, RN

(Research/Theory in Nursing,
New York University)
Professor, Department of Nursing
Rockland Community College, Suffern, NY

Kathleen Morgan, MS, RN

(Nursing Education, State University of
New York Institute of Technology)
Nursing Faculty Member
Excelsior College, Albany, NY

Laurie Nagelsmith, PhD, RN

(Educational Psychology,
State University of New York at Albany)
Associate Dean, School of Nursing
Excelsior College, Albany, NY

Barbara Nichols, MS, RN, FAAN

(Behavior Disabilities and Counseling,
University of Wisconsin)
Chief Executive Officer
Commission on Graduates of
Foreign Nursing Schools
Philadelphia, PA

Dacey A. O'Malley, PhD, RN

(Program Development and Evaluation,
State University of New York at Albany)
Professor, Nursing Department
Hudson Valley Community College, Troy, NY

continued

School of Nursing Faculty and Consulting Faculty, continued

Bonnie Page, MS, RN

(MS Health Education SUNY Cortland;
MS Nursing Family Nurse Clinical
Specialist with Nurse Practitioner Skills,
Binghamton University)
Nursing Faculty Member
Excelsior College, Albany, NY

Mary Lee Pollard, PhD, RN

(Educational Theory and Practice,
State University of New York at Albany)
Dean, School of Nursing
Excelsior College, Albany, NY

Demetrius J. Porche,**DNS, PhD, APRN, FNP, CS**

(Public/Community Health Nursing,
Louisiana State University Medical Center)
Dean and Professor
Louisiana State University
Health Sciences Center, School of Nursing
New Orleans, LA

Jayne Prendergast, MS, RN

(Nursing, SUNY at Binghamton)
Nursing Faculty Member
Excelsior College, Albany, NY

Larry D. Purnell, PhD, RN, FAAN

(Health Services Administration,
Nursing, Columbia Pacific University)
Professor, School of Nursing
University of Delaware

Deborah Rastinehad,**PhD, RN, CoCN, CWCN**

(Nursing, University of Massachusetts)
Assistant Dean, School of Nursing
Excelsior College, Albany, NY

Nancy Smulsky, MS, RN, CPHQ

(Nursing, Excelsior College, Albany, NY)
Nursing Faculty Member
Excelsior College, Albany, NY

Maureen Straight, MS, RN

(Nursing, Excelsior College, Albany, NY)
Nursing Faculty Member
Excelsior College, Albany, NY

Helene Wallingford, MS, RN

(Parent & Child Nursing/Education,
The Sage Colleges, Troy NY)
Nursing Faculty Member
Excelsior College, Albany, NY

Nona Wilson, MS, RN

(SUNY IT Utica, NY)
Nursing Faculty Member
Excelsior College, Albany, NY

Fran Zoske, MSN, RN

(Clinical Nurse Specialist,
Psychiatric-Mental Health Nursing,
Arizona State University)
Nursing Faculty Member,
Excelsior College, Albany, NY

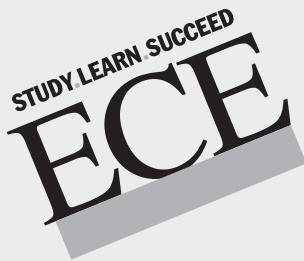
New York State Education Department Inventory of Registered Programs

Higher Education General Information Survey Code for Classifying Academic Subject Areas.

Program Title	HEGIS	Award
School of Business and Technology, Business Programs		
Administrative/Management Studies	5004	AAS
Business	5001	AS
General Business	0501	BS
Accounting (General)	0502	BS
Accounting (NYS CPA Track)	0502	BS
Finance	0504	BS
Global Business	0513	BS
Management of Human Resources	0515	BS
Management Information Systems	0507	BS
Marketing	0509	BS
Operations Management	0506	BS
Risk Management and Insurance	0512	BS
Hospitality Management	0508	BS
Business	0506	MBA
School of Health Sciences Programs		
End of Life Care	1299	Certificate
Health Care Informatics	1203.12	Certificate
Health Care Management	1203.12	Certificate
Health Sciences	1201	BS
School of Liberal Arts Programs		
Homeland Security	5505	Certificate
Liberal Arts	5649	AA, AS
Liberal Studies	4901	BA, BS, MA
Area Studies	0399	BA, BS
Biology	0401	BA, BS
Chemistry	1905	BA, BS
Communication	0601	BA, BS
Criminal Justice	2105	BS, MS
Economics	2204	BA, BS
Geography	2206	BA, BS
Geology	1904	BA, BS

Program Title	HEGIS	Award
School of Liberal Arts Programs (continued)		
History	2205	BA, BS
Literature in English	1502	BA, BS
Mathematics	1701	BA, BS
Music	1005	BA, BS
Philosophy	1509	BA, BS
Physics	1902	BA, BS
Political Science	2207	BA, BS
Psychology	2001	BA, BS
Sociology	2208	BA, BS
World Language and Literature	1199	BA, BS
School of Nursing Programs		
Nursing	5208	AAS, AS
Nursing	1203.10	BS, RN-MS, MS
School of Business and Technology, Technology Programs		
Cybersecurity	5199	Certificate
Cybersecurity Management	0799	Certificate
Aviation Studies	5302	AAS, AOS
Technical Studies	5315	AAS
Computer Software	5103	AS
Electronics Technology	5103	AS
Nuclear Technology	5316	AS
Technology	5305	AS
Technology	0925	BS
Computer Information Systems	0702	BS
Computer Technology	0701	BS
Electronics Engineering Technology	0925	BS
Information Technology	0702	BS
Nuclear Engineering Technology	0925	BS
Cybersecurity	0702	MS

Credit by exam  excelsior.edu/exams
 UExcelTest.com



About Test Preparation Services

The College offers a variety of learning resources including content guides, guided learning materials, and practice tests available directly from Excelsior. These resources are prepared by Excelsior College so you can be assured that they are current and cover the content you are expected to master for the exams. Along with your own desire to learn, these resources are usually all that you need to help you succeed.

Some students may seek additional assistance or may be contacted by tutorial firms and test-preparation companies offering their own products and services. The College is not affiliated with any of these firms and does not endorse the products or services of any of these vendors; we do not review their materials for content or compatibility with ECEs.

To help you become a well-informed consumer we suggest, before you make any purchase decision regarding study materials provided by organizations other than Excelsior College, that you consider the points outlined on our Web site.

www.excelsior.edu/testprep

Excelsior College® Examinations (ECEs) and UExcel® Exams

- Credit-bearing exams from Excelsior College® Examinations (ECEs) and UExcel® save you time and money while accommodating your busy schedule.
- Join the tens of thousands of people, not just Excelsior College students, who have earned undergraduate college credit with ECEs and UExcel exams.
- Study independently with a wealth of Excelsior College resources: everything from free examination content guides and free online tutoring to Web-based practice exams and the Excelsior College Library. Take the exam when you're ready. Get the college credit you need to earn your degree.
- These exams complement the many other options for earning credit from Excelsior College: Excelsior College courses, industrial or military training, even a portfolio assessment to evaluate your life experience.
- The American Council on Education's College Credit Recommendation Service (ACE CREDIT) has evaluated and made college credit recommendations for ECE and UExcel examinations.
- Excelsior College® Examinations is one of the nation's oldest and most respected credit-by-exam programs developed and maintained by an accredited, degree-granting institution. Excelsior College, a private, nonprofit institution, is widely recognized as a leader in the evaluation of prior learning, and offers a series of more than 40 undergraduate examination titles at both the upper- and lower-levels.

Contact the Admissions Office toll free at 888-647-2388, ext. 27, to discuss how exams will fit into your academic plan.

"Students with prior learning assessment credit needed less time to earn degrees and had higher degree-earning rates."

March 2010 CAEL (The Council For Adult & Experiential Learning) study, *Fueling the Race to Postsecondary Success*

Register for an exam today or learn more by visiting:

www.excelsior.edu/exams | www.UExcelTest.com



7 Columbia Circle, Albany, New York 12203-5159

Phone: | toll free 888-647-2388 or 518-464-8500

TDD: | 518-464-8501

Fax: | 518-464-8777

www.excelsior.edu