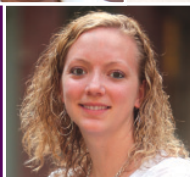




School of Nursing

CATALOG



www.excelsior.edu



THE PHILOSOPHY OF EXCELSIOR COLLEGE

What you know is more important than where or how you learned it.[®]

ABOUT EXCELSIOR COLLEGE

Excelsior College was founded in 1971 as the external degree program of the New York State Board of Regents. In 1998, the Board of Regents granted the College (then known as Regents College) an absolute charter to operate as a private, nonprofit, independent college. As are all accredited colleges in the state, Excelsior College is a member of The University of the State of New York. The College is governed by a board of trustees composed of individuals from across the United States who are prominent in the fields of business, education, government, and the professions.

A leader in online and distance learning, Excelsior College awards associate, baccalaureate, and master's degrees, as well as offers certificate programs, through its five schools: Business & Technology, Health Sciences, Liberal Arts, Nursing, and Public Service.

Excelsior's student body represents a diverse group of adult learners.

- The average age of an Excelsior student is 38; about 57 percent are female, 43 percent are male.
- Nearly one-third of our enrolled students are from groups historically underrepresented in higher education.
- More than one-third of our students are active-duty military personnel or veterans.
- More than 150,000 persons have earned degrees from Excelsior College. Of those graduates, 11 percent come from New York State; the remaining are from the rest of the United States and other nations.

The faculty of Excelsior College, both full-time and adjunct, are drawn from many colleges and universities as well as from industry and the professions. They teach our courses, establish and monitor academic policies and standards, determine degree requirements and the means by which credit may be earned, develop the content for all examinations, and recommend degree conferral to the Excelsior College Board of Trustees.

THE MISSION OF EXCELSIOR COLLEGE

Excelsior College provides educational opportunity to adult learners with an emphasis on those historically underrepresented in higher education. The College meets students where they are—academically and geographically, offering quality instruction and the assessment of learning.

VISION STATEMENT

Excelsior College aspires to be a model university for the 21st century.

- Excelsior will be a provider of choice for those who pursue their educational goals in a flexible, individualized manner.

INDIVIDUAL STATE REGISTRATION/AUTHORIZATION DISCLOSURE

Minnesota: Excelsior College is registered as a private institution with the Minnesota Office of Higher Education pursuant to sections 136A.61 to 136A.71. Registration is not an endorsement of the institution. Credits earned at the institution may not transfer to all other institutions.

Florida: Additional information regarding Excelsior College may be obtained by contacting the Commission for Independent Education, 325 West Gaines Street, Suite 1414, Tallahassee, Florida 32399-0400.

- Excelsior will continue to serve as a cost-effective stimulus for lifelong learning and individual achievement, advocating the assessment of learning and aggregation of credit.
- Excelsior will be recognized as an ideal academic collaborator and as a valuable partner in addressing societal and workforce needs.

ACCREDITATION

Excelsior College is accredited by the Middle States Commission on Higher Education, 3624 Market Street, Philadelphia, PA 19104, telephone: 267-284-5000. The Middle States Commission on Higher Education is an institutional accrediting agency recognized by the U.S. Secretary of Education and the Council for Higher Education Accreditation (CHEA).

The associate, bachelor's, and master's degree programs in nursing at Excelsior College are accredited by the Accrediting Commission for Education in Nursing (ACEN), formerly known as the National League for Nursing Accrediting Commission (NLNAC), 3343 Peachtree Road NE, Suite 850, Atlanta, GA 30326, telephone: 404-975-5000. The ACEN is a specialized accrediting agency for nursing recognized by the U.S. Secretary of Education and the Council for Higher Education Accreditation (CHEA).

The bachelor's degree programs in electrical engineering technology and nuclear engineering technology are accredited by the Engineering Technology Accreditation Commission of ABET, 111 Market Place, Suite 1050, Baltimore, MD 21202, 410-347-7700; www.abet.org. ABET is a specialized accrediting agency recognized by the Council for Higher Education Accreditation (CHEA).

Excelsior College has received specialized accreditation for its business programs through the International Assembly for Collegiate Business Education (IACBE), 11374 Strang Line Rd., Lenexa, KS 66215; 913-631-3009; www.iacbe.org. The IACBE is a specialized accrediting agency recognized by the Council for Higher Education Accreditation (CHEA). The business programs in the following degrees are accredited by the IACBE: Bachelor of Science in Accounting (NYS CPA track) and Bachelor of Science in Business.

All the College's academic programs are registered (i.e., approved) by the New York State Education Department.

RECOGNITION

The Master of Arts in Liberal Studies program has been accepted into full membership by the Association of Graduate Liberal Studies Programs (AGLSP).

The American Council on Education's College Credit Recommendation Service (ACE CREDIT) has evaluated and made college credit recommendations for UExcel[®] exams and Excelsior College[®] Examinations.

The National League for Nursing (NLN) has designated the Excelsior College School of Nursing as a Center of Excellence in Nursing Education, 2011–2016. This distinction has been awarded in recognition of the College's sustained achievements in creating environments that promote student learning and professional development and it is the third consecutive designation the School has received since the NLN began the program in 2005.

The Excelsior College School of Nursing

A Message from the Dean



Mary Lee Pollard, PhD, RN, CNE

Dear Student:

Congratulations on taking the next step in achieving your educational and professional goals. The faculty and staff of Excelsior College School of Nursing are here to guide your journey.

Our School of Nursing is home to the Tau Kappa chapter of Sigma Theta Tau International, Honor Society of Nursing and has been designated as a National League for Nursing (NLN) Center of Excellence in Nursing Education: Creating Environments that Enhance Student Learning and Professional Development, 2005–2008, 2008–2011, and 2011–2016. Being acknowledged by the NLN and identified as a Center of Excellence in Nursing Education not once, but three times, is something we are very proud of and strive to live up to every day!

In addition, we are very dedicated to diversifying the nursing workforce, one way of which is by serving those traditionally underrepresented in nursing. Our efforts in this area have been recognized in a number of ways. The American Assembly for Men in Nursing presented Excelsior with its Best School award in 2006, 2007, 2009, 2011 and 2013; what's more, Excelsior has been approved to host a new chapter of the AAMN here in New York's capital region, and *Hispanic Outlook in Higher Education* magazine named Excelsior as a top 20 school for having Hispanic graduates.

As a not-for-profit, private institution of higher education chartered by the New York State Board of Regents, the College is fully accredited by the Commission on Higher Education of the Middle States Association of Colleges and Schools, one of the oldest and most respected regional accreditors in the United States. All of our nursing programs hold prestigious specialty accreditation by the Accreditation Commission for Education in Nursing, Inc. (ACEN; formerly known as the National League for Nursing Accrediting Commission), which is recognized by the U.S. Secretary of Education.

This catalog describes all of our nursing degree and certificate programs in detail. Please take the time to read it carefully along with the *Student Policy Handbook* available on our website. I also encourage you to take full advantage of the many learning resources Excelsior College has to offer. We offer a full array of resources, designed and delivered by our nursing faculty and staff, that will be useful as you meet each of your program requirements.

Best wishes for your success!

A handwritten signature in black ink that reads "Mary Lee Pollard". The script is fluid and cursive.

Mary Lee Pollard, PhD, RN, CNE
Dean, Excelsior College School of Nursing

LIMITATIONS

Information in this catalog is current as of September 2013, and is subject to change without advance notice.

CHANGES IN COLLEGE POLICIES, PROCEDURES, AND REQUIREMENTS

The College reserves the right to modify or revise the admission requirements of any program of the College; degree and graduation requirements; examinations, courses, tuition, and fees; and other academic policies, procedures, and requirements. Generally, program modifications and revisions will not apply to currently enrolled students so long as they actively pursue their degree requirements. However, in the event that it is necessary to make program changes for enrolled students, every effort will be made to give notice. It is also the responsibility of students to keep themselves informed of the content of all notices concerning such changes.

© 2013 Excelsior College.

“Excelsior College,” “CPNE,” “FCCA,” and “OneTranscript” are registered service marks of Excelsior College.

All rights reserved. Unauthorized reproduction or use prohibited.

Printed in the USA, September 2013.

Excelsior College maintains a drug-free workplace and is a drug-free school, as provided by the Federal Drug-Free Schools and Communities Act Amendments of 1989 and the Drug-Free Workplace Act of 1988.

Excelsior College does not discriminate on the basis of age, color, religion, creed, disability, marital status, veteran status, national origin, race, gender, or sexual orientation in the educational programs and activities which it operates. Portions of this publication can be made available in a variety of formats upon request.

Campus Crime Statistics can be found at the following website: <http://ope.ed.gov/security>

The Excelsior College **School of Nursing**

The Excelsior College School of Nursing offers the following degree and certificate programs:

- Associate in Science in nursing
- Associate in Applied Science in nursing
- Bachelor of Science in nursing
- Master of Science in nursing
- RN to MS in nursing
- Graduate Certificate in Nursing Management
- Post-Master's Certificate in Nursing Education

At the associate degree level, we are a competency-based distance learning program. Associate degree students without licensure are prohibited from performing many clinical activities in their usual work setting. This is in contrast to students in campus-based instructional programs, who can engage in such learning activities under an exempt clause in the Nurse Practice Act. This clause enables them to perform patient care under faculty supervision. Students without a registered nursing license enrolled in Excelsior College are not eligible to practice under this clause, except during the actual administration of the Clinical Performance in Nursing Examination. All students who pursue bachelor's or master's degrees in nursing at Excelsior College have a current license to practice as a registered nurse, and may, therefore, work within the scope of their license while engaging in educational endeavors.



Our nursing degree programs are specifically designed to serve individuals with significant experience in clinically oriented health care disciplines.

While it is possible for some associate degree nursing students to learn the necessary nursing competencies in a learning laboratory and through observation, it is extremely difficult to do so. Students with a limited background in nursing or a related health care discipline are best advised to attend an instructional program. Excelsior College is not associated with, nor does it endorse, any external organization, external firm, or group that provides theoretical and clinical learning opportunities for students. Learning opportunities and resources are provided by the College and are described in the student services section of the *General Information Guide*, and on [our website](#).

Excelsior College is home to the **Tau Kappa chapter of Sigma Theta Tau International, Honor Society of Nursing.**

The School of Nursing has been designated an **NLN Center of Excellence** three times and is a five-time recipient of the **American Assembly for Men in Nursing's Best School or College of Nursing for Men award.**



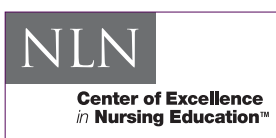
THE AMERICAN ASSEMBLY FOR MEN IN NURSING

The American Assembly for Men in Nursing presented its 2006, 2007, 2009, 2011, and 2013 *Best School or College of Nursing for Men* award to the Excelsior College School of Nursing.



TAU KAPPA CHAPTER, SIGMA THETA TAU INTERNATIONAL, HONOR SOCIETY OF NURSING

Tau Kappa, the Excelsior College chapter of Sigma Theta Tau International, Honor Society of Nursing, was originally chartered in July of 2004. It shares the vision of Sigma Theta Tau International—to create a global community of nurses who lead using scholarship, knowledge, and technology to improve the health of the world's people. Eligible bachelor's and master's degree students are invited for induction. Specific information about the chapter and its activities is available on a link from the [Excelsior College website](#).



THE EXCELSIOR COLLEGE SCHOOL OF NURSING has been designated a Center of Excellence by the National League for Nursing for 2005–2008, 2008–2011, and 2011–2016. This coveted designation is awarded on the basis of a national peer-review process. Recognition by

the National League for Nursing as a Center of Excellence indicates that the Excelsior College School of Nursing has demonstrated sustained, evidence-based, and substantive innovation in creating environments that enhance student learning and professional development, that it conducts ongoing research to document the effectiveness of such innovation, that the School sets high standards for itself, and that we are committed to continuous quality improvement.

Table of Contents

A Message from the Dean i

Important Information vii

About Test Preparation and Tutorial Services vii

Student Policy Handbook viii

Standardized Testing Participation viii

Excelsior College Website viii

General Education Outcomes for All

Undergraduate Degree Programs viii

Technology Literacy ix

Baseline Technology Skills and Resources ix

The Excelsior College School of Nursing 1

Mission Statement 1

Goals of the School of Nursing 1

Philosophy 2

Nursing Curricula 2

Organizing Framework for the Nursing Curricula 2

Metaparadigm Concepts: Definitions 2

Admission Requirements 3

International Student Admission Requirements 4

Time Limits and Average Time for Program Completion 4

Licensure 5

Criminal Background Checks 5

Requirements for All Degree Programs 6

Written English Requirement 6

Information Literacy 7

Mathematics Policy 7

Associate Degree Programs in Nursing 9

Associate in Science and

Associate in Applied Science 9

Beliefs About the Practice of Associate Degree Nursing 9

Purpose of the Associate Degree Nursing Programs 10

Educational Outcomes 10

Associate in Science and

Associate in Applied Science in Nursing Degree Chart 11

Associate Degree Requirements:

General Education and Nursing 12

General Education Component 12

Associate in Science 12

Associate in Applied Science 14

Nursing Component for Both

Associate Degrees in Nursing 16

Phase I: Nursing Theory requirements 17

Phase II: Nursing Theory requirements 18

Phase III 20

Phase IV 20

Meeting Requirements 20

Meeting Specific Requirements 21

Excelsior College® Examinations and Online Courses 21

Policies Specific to the Associate Degrees in Nursing 21

Admission 21

Military Personnel 21

Minimum Academic Average 22

Time Limits 22

Nursing Theory Examinations Policies 22

Focused Clinical Competency Assessment® (FCCA®)

and Clinical Performance Examination in

Nursing (CPNE®) Policies 23

Physical Education Courses 24

Waiver of Excelsior College® Associate Degree

in Nursing Theory Requirements 24

Planning for Degree Completion 25

Regional Performance Assessment Centers 25

Learning Resources for AS and AAS Nursing Students 25

Nursing Theory Examination: Online Conferences 26

Nursing Theory Practice Examinations 26

CPNE® Workshop 26

CPNE® Online Conferences 26

Additional CPNE® Learning Resources 28

Bachelor's Degree Program in Nursing 29

Bachelor of Science in Nursing 29

Beliefs About the Practice of Bachelor's Degree Nursing 29

Purpose of the Bachelor of Science in Nursing Program .. 30

Educational Outcomes 30

Bachelor of Science in Nursing for

Registered Nurses Degree Chart 31

Bachelor of Science in Nursing Degree Requirements 32

General Education Component 32

Requirements 33

Meeting Specific Requirements 34

Nursing Component 34

Phase I 34

Phase II 35

Phase III 36

Certifications Approved for Elective Credit 37

Policies Specific to the Bachelor of Science in Nursing 37

Admission 37

Time Limit 38

Mathematics Policy	38
Minimum Academic Average	39
Policy on Repeating Nursing Computer-Delivered Examinations and Nursing Courses	39
Waiver of Excelsior College® Nursing Bachelor's Theory Examinations or Courses	39
Excelsior College® Examinations	40
Learning Resources for Bachelor's Degree in Nursing Students	40
Graduate Programs in Nursing	41
Beliefs About Master's Degree Nursing Practice	41
Purpose of the Graduate Program in Nursing	42
Educational Outcomes	42
Specialization in Nursing Leadership and Administration of Health Care Systems	42
Specialization in Nursing Education	43
Specialization in Nursing Informatics	43
Policies Specific to the Master of Science in Nursing	44
Admission	44
International Student Admission Requirements	44
English Language Proficiency Requirement	44
Time Limit	44
Course Waiver	45
Master of Science in Nursing with a Specialization in Nursing Leadership and Administration of Health Care Systems Degree Chart	46
Requirements for the Specialization in Nursing Leadership and Administration of Health Care Systems	47
Phase I	47
Phase II	48
Phase III	48
Master of Science in Nursing with a Specialization in Nursing Education Degree Chart	49
Requirements for the Specialization in Nursing Education ..	50
Phase I	50
Phase II	51
Phase III	51
Master of Science in Nursing with a Specialization in Nursing Informatics Degree Chart	52
Requirements for the Specialization in Nursing Informatics ..	53
Phase I	53
Phase II	54
Phase III	54

Dual Degree Program in Nursing	55
RN to Master of Science in Nursing	55
Policies Specific to the RN to MS in Nursing Program	56
Admission	56
Time Limit	56
Course Load Requirement	57
Minimum Academic Average—Graduate Courses	57
RN to Master of Science in Nursing with a Specialization in Nursing Leadership and Administration of Health Care Systems Degree Chart	58
RN to Master of Science in Nursing with a Specialization in Nursing Education Degree Chart	59
RN to Master of Science in Nursing with a Specialization in Nursing Informatics Degree Chart	60
RN to MS in Nursing Requirements	61
General Education Component	61
Nursing Component	61
Bachelor's Phase	61
Bachelor's Phase Requirements	62
Graduate-Level Phases	62
Certificates in Nursing	63
Graduate Certificate in Nursing Leadership and Administration of Health Care Systems	64
Educational Outcomes	64
Admission	64
Required Courses	64
Post-Master's Certificate in Nursing Education	65
Educational Outcomes	65
Admission	65
Required Courses	65
Elective Courses	65
Excelsior College Board of Trustees	66
Excelsior College Leadership Staff	67
School of Nursing Faculty and Consulting Faculty...	68
New York State Education Department Inventory of Registered Programs	70

Important Information for All Students

About Test Preparation and Tutorial Services

The College offers UExcel® exams, and Excelsior College® Examinations designed to help you advance your academic objectives through independent study. A variety of learning resources, including content guides, guided learning materials, and practice tests, are available directly from Excelsior. These resources are prepared by Excelsior College so you can be assured that they are current and cover the content you are expected to master for the exams. Along with your own desire to learn, these resources are usually all that you need to help you succeed.

Some students may seek additional assistance or may be contacted by tutorial firms and test-preparation companies offering their own products and services. The College is not affiliated with any of these firms and does not endorse the products or services of any of these vendors since we do not review their materials for content or compatibility with UExcel® exams.

To help you become a well-informed consumer we suggest, before you make any purchase decision regarding study materials provided by organizations other than Excelsior College, that you consider the points outlined on our website.

www.excelsior.edu/testprep

IMPORTANT:

It is important for you to keep us informed of your current contact information, so we can reach you. You can update your address, phone numbers, fax number, and email preference on our website, through your **MyExcelsior** user account, or you can call us with this information.



www.excelsior.edu

[www.excelsior.edu/
myexcelsior](http://www.excelsior.edu/myexcelsior)

Important Information

Student Policy Handbook

The Excelsior College *Student Policy Handbook* is your resource for understanding the academic and administrative policies that are important to your academic success. It includes a wide range of information from important federal policies, including your right to privacy, to grading policies and policies and procedures concerning refunds, withdrawals, and other administrative issues.

It is your responsibility to be familiar with these policies. The term “students” includes those currently matriculated at Excelsior College taking examinations and/or courses, non-matriculated students taking examinations and/or courses, non-matriculated students in the application process, individuals using the OneTranscript® service (formerly Credit Bank), formerly matriculated students currently in withdrawn status, and graduates.

Policies and procedures that apply only to a specific degree program are listed in the appropriate school catalog. You may download a copy of the *Student Policy Handbook* from our website. File your handbook with your other important academic papers and this program catalog for easy reference.

Standardized Testing Participation

Students have a responsibility to participate in standardized tests (an example is the “Proficiency Profile” published by Educational Testing Services) that may be required during the period of their enrollment. These tests may be in addition to regular coursework and are required to gather critical information on achievement of student learning. Students are expected to actively participate and make every effort to do their best on these assessments to produce scores that accurately reflect their abilities. The results from these assessments will not be part of the course grade but are crucial for the purpose of program improvement and are frequently required by regulators and accreditation agencies. Participation in these assessments

contributes toward increasing the value of the degree by providing evidence of student learning to external organizations, employers, and the general public.

Excelsior College Website

Through the College’s website, you have access to a wealth of information to help you succeed as a student. If you haven’t already done so, create a MyExcelsior user account. It will serve as your gateway to a variety of support services and is where you will find up-to-date information tailored to your specific academic program as well as general announcements from the College.

General Education Outcomes for All Undergraduate Degree Programs

Each undergraduate degree program has a strong arts and sciences component designed to help you develop a broad-based understanding of multiple disciplines, provides a breadth of academic experience to enrich your life, and allows you to become more informed and engaged as a citizen and a lifelong learner in an increasingly complex and changing world. This arts and sciences component, offered in a delivery model of flexibility, quality, and accessibility that is based on adult learning theory, helps you to integrate knowledge from multiple sources and experiences in diverse ways of knowing. These guiding principles have thus formed the six learning goals for General Education at Excelsior College.

1. Communication and Oral Expression

Excelsior students will be able to express themselves effectively in English, both orally and in writing, and with clarity, persuasiveness, and coherence using standard conventions of English.

2. Mathematics and Scientific Method

Excelsior students will utilize scientific reasoning and basic mathematical calculations in problem solving in their public discourse.

3. Information Literacy

In this age of information proliferation due to rapid technological advances, students will have

to learn to discern information critically. They will have to learn to identify the amount and type of information needed, to understand where to locate, effectively access that information, evaluate the source of the information, and use it as per legal and ethical considerations.

4. Diversity and Global Understanding

Excelsior students will have an understanding and appreciation of the complexities of diversity and will be able to interact effectively with people from backgrounds and cultures different from their own. They will have gained a global perspective that is grounded in the issues, trends, and opportunities that connect nations and communities around the world. They will challenge their own sense of “self” vis-à-vis an understanding of those with different thoughts, beliefs, traditions, behaviors, and understandings.

5. Social Responsibility and Civic Engagement

Excelsior students will acknowledge the importance of social responsibility and civic engagement and the behaviors that support these beliefs.

For more information on the General Education goals and outcomes, visit: www.excelsior.edu/gened

Technology Literacy

Excelsior College Definition of Technology Literacy
[Based on State Educational Technology Directors Association (SETDA)]

Excelsior College defines technology literacy as the ability to identify and responsibly use appropriate technology to communicate, solve problems, and access, manage, integrate, evaluate, and create information to improve learning. This will facilitate the ability to acquire new knowledge for lifelong learning in the 21st-century global workplace.

Baseline Technology Skills and Resources

1. Prior to being admitted to Excelsior College, all students should be knowledgeable in the use of a personal computer (Windows or Macintosh). Entering students should have the ability to
 - use a personal computer,
 - use office automation programs to create, edit, store and print documents,
 - use electronic communication tools, and search and retrieve information from electronic resources to complete assignments and activities.
2. Students must have reliable access to a computer with Internet connectivity.
3. Student's computer and operating systems must meet the minimal technical requirements as noted in the Excelsior College Computer System Requirements (www.excelsior.edu/system-requirements).
4. Students must be able to utilize required software applications.
5. Students need to utilize the Excelsior College website to access information, resources, and the Message Center, and to participate in activities. See the Excelsior College Electronic Use policy (www.excelsior.edu/electronic-use-policy).
6. Students are required to conduct themselves appropriately and professionally at all times, including online.

The Excelsior College **School of Nursing**

Mission Statement

The mission of the Excelsior College School of Nursing is to prepare nurses at the associate, bachelor's, and master's levels, whose practice reflects humanistic, ethical, culturally sensitive, technically competent, safe, and scientifically based care. The programs of study are designed to expand individual horizons, foster commitment to lifelong learning, and assist in the development of intellectual curiosity and respect for inquiry. The School of Nursing strives to increase access to quality nursing education for a diverse and underserved population of adult learners to meet a global society's need for nurses and educated citizens. The three distance education nursing programs employ teaching/learning and rigorous assessment strategies that are efficient, economical, and innovative. The curricula are designed to provide students with opportunities to achieve career goals through seamless transitions progressing along the educational continuum.

The nursing degree programs meet the standards for registration by the New York State Education Department. The programs' curricula are comparable to campus-based instructional programs. In the associate degree programs, the student is able to demonstrate appropriate knowledge and competencies through a variety of assessment and evaluation methods including review of credit earned from regionally accredited colleges, completion of nursing theory examinations, and criterion-referenced performance examinations and requirements. In the bachelor's degree program, the student is able to demonstrate generalist knowledge and competence through participation in online discussion, assessment of knowledge and experiential learning, evaluation of credit earned from regionally accredited colleges, nursing theory examinations, and professional certification.

In the master's degree program, the student is able to demonstrate expert/specialty knowledge and skills through participation in online discussion, assessment of knowledge and experiential learning, and evaluation of credit earned from regionally accredited colleges.

Goals of the School of Nursing

1. Maintain national leadership in nursing and distance education and serve as an advocate for innovative and alternative educational models.
2. Contribute to the goal of the College to enhance the student experience thereby ensuring access, success, and satisfaction.
3. Maintain a healthy and diverse work environment in which faculty and staff can grow and develop intellectually and professionally.
4. Sustain the School as a Center of Excellence in Nursing Education with an environment that develops students' values, socializes them to new roles, and creates a commitment to lifelong learning.
5. Expand and enhance learning support services that are responsive to students' needs and reflect best practices.
6. Provide evidence-based, high-quality, rigorous, learner-centered academic programs.
7. Provide flexible, dynamic curricula with sound objective assessments that assure achievement of learning outcomes.

Philosophy

The School of Nursing community believes that nursing is a scientific discipline with a distinct body of knowledge. Nursing uses this knowledge along with knowledge from other disciplines to shape and inform practice. Nurses engage with clients in a dynamic partnership and come to know them as holistic beings. The nurse-client relationship reflects dignity, valuing, and respect for personhood. The focus of nursing is with individuals, families, aggregates, communities, and systems. Health is the actualization of human potential and is manifested uniquely in multidimensional and dynamic patterns and processes across the life span in response to changes in the environment. Environment, both external and internal, provides the context within which nurse-person interaction and health occur. These paradigmatic beliefs guide nursing practice and underpin nursing knowledge development and discovery.

The faculty is committed to an educational philosophy that emphasizes competency assessment and learning at a distance. The faculty supports programs that are designed to meet the educational goals of a diverse population of adult learners who bring varied lifelong knowledge and experience to the learning encounter. The faculty views adult independent learning as a process of knowledge acquisition attained through exposure to varied planned educational strategies unconstrained by time and/or place. The faculty believes that curricula are best designed using consensus-building by a national faculty of content experts, master educators, and clinicians who make curricular decisions based on principles of adult learning, internally generated data, and evidence of best practice in nursing education. The faculty believes that knowledge related to adult learning and assessment of competence can be applied to support the concepts of both external and distance nursing education.

The faculty is responsible for determining what must be learned; how learning can be supported; and how learning is assessed. The faculty believes

that adult learners have the capability to create their own learning experiences guided by each program's curricular framework. The ability to learn, readiness to learn, motivation to learn, and responsibility to learn are seen as characteristics of the adult learner rather than of the faculty or the educational institution providing the degree.

The faculty believes that society's health care needs can be served by nurses with different levels of education. Therefore, the Excelsior College School of Nursing offers associate, bachelor's, and master's degree programs and learners have the opportunity to seek the educational level most suited to their needs and prior preparation.

Nursing Curricula

Organizing Framework for the Nursing Curricula

The organizing framework consists of nine interrelated concepts that direct delivery of the curriculum at each level—AD, BS, and MS. They include the four metaparadigm concepts of nursing, client, health, and environment supported by concepts of critical thinking, communication, research, role development, and caring/cultural competence. The faculty believes that the metaparadigm concepts underpinned by the supporting concepts represent concepts critical to the practice of nursing at each level of practice addressed in the Excelsior College nursing programs and that those concepts serve as a foundation to nursing education. Each is evident and operationalized throughout each of the curricula and is reflected in the educational program objectives.

Metaparadigm Concepts: Definitions

Health

Defined at all levels as the actualization of human potential.

Nursing

Defined at the associate degree level as engaging with clients in dynamic partnerships and coming to know them as holistic beings reflecting dignity, values, and respect for personhood in three roles: provider of care, manager of care, and member of profession. At the bachelor's degree level, nursing is defined as coordinating and providing care for clients with multiple, complex, and variable health care problems to promote, protect, and restore health and support end of life care. At the master's degree level, nursing is defined as applying specialty knowledge to engage in clinical reasoning and decision making.

Environment

Environment, both internal and external, is defined at all levels as providing a context within which nurse-client interaction and health occur.

Client

Defined at the associate degree level as the individual within the context of the family. At the bachelor's degree level, client includes individuals, families, aggregates, and communities. At the master's degree level, client is defined as individuals, families, aggregates, communities, and systems.

Critical thinking *

The intellectually disciplined process of conceptualizing, applying, analyzing, synthesizing, and evaluating information gathered from varied sources including observation, experience, reflection, reasoning, communication, and other data sources to inform decision making.

Communication

A verbal and non-verbal process of interactive exchange with others used to demonstrate caring and to receive, process, and send information, thoughts, ideas, and feelings.

* Adapted from Scriven & Paul, 1987.

Research

A process of scientific inquiry leading to state-of-the-discipline knowledge that can be used as evidence to inform nursing practice.

Role Development

Dynamic professional socialization into the three broad roles of nursing practice: Provider of Care, Manager of Care, and Member of Profession. In these roles, the professional nurse demonstrates knowledge, skills, values, and competencies necessary for nursing practice.

Caring and Cultural Competence

Patterns of nurse-client interactions that are characterized by sensitivity to and respect for human/person values, experiences, and cultures.

Admission Requirements

All prospective nursing students must submit an application for admission to the School of Nursing. Each program has admission requirements. The associate degree programs are open to licensed practical/vocational nurses, paramedics, selected classifications of military service corpsmen**, and individuals who hold degrees in clinically oriented health care fields in which they have had the opportunity to provide direct patient care (e.g., physicians, respiratory therapists, and physician assistants). The necessary documentation, such as copies of licenses, certificates, and official transcripts must be submitted with the admissions application. The undergraduate application for admission identifies required supporting

** Admission to the associate degree in nursing program is limited to military personnel who are on active duty, in the reserves, or have a discharge date within one year of enrollment into the Excelsior College School of Nursing. See the Undergraduate Application for Admission for a listing of the military occupations that meet the admission criteria.

documentation for admission by each category of applicant as well as additional admissions criteria.

Excelsior College offers a bachelor of science in nursing program for registered nurses as well as an RN to MS in nursing program. These programs are designed for registered nurses who have (1) completed a nursing program at an institution that was accredited by the Accreditation Commission for Education in Nursing Inc. (ACEN; formerly known as National League for Nursing Accrediting Commission Inc./NLNAC) during the time of the student's attendance, (2) successfully completed the NCLEX-RN®, have had their learning validated by prior education, and (3) have a current license to practice as a registered nurse in the United States.

Admission to the Master of Science in nursing program is open to anyone with a bachelor's degree in any field from a regionally accredited institution and an RN license who seeks to obtain an MS in nursing with a specialization in Clinical Systems Management, Nursing Education, or Nursing Informatics.

International Student Admission Requirements

Admission to the associate degree in nursing programs is not open to international students. For the bachelor's and master's programs, in addition to official transcripts, nursing candidates must demonstrate that they have an equivalent U.S. Registered Nurse (RN) license. To be eligible for admission, the applicant must be a graduate from an approved school of nursing in their country of education and hold a current, unencumbered nursing license (if licensed in multiple jurisdictions and/or countries, all licenses must be unencumbered). All nursing school transcripts and all licenses will be validated by primary source verification. International candidates must apply to the Commission on Graduate of Foreign Nursing Schools (CGFNS) New York Credential Verification Service (NYCVS) and the New York State

Education Department (NYSED) to have their foreign nursing education evaluated and approved by the aforementioned organizations.

Detailed application information and instructions are found in the application for admission. Submit email questions concerning international student admission requirements via email to: international@excelsior.edu.

English Language Proficiency Requirement

International candidates from non-English speaking countries must show evidence of sufficient English language proficiency through one of the following options:

1. Submission of TOEFL (Test of English as a Foreign Language) or IELTS (International English Language Testing System) taken within the last two years.
2. Successful completion of UExcel® exam **ENGx111 English Composition** or UExcel® exam **ENGx110 College Writing**.
3. Submission of evidence of the successful completion of at least 9 credit hours of academic work in courses delivered in English at an institution of higher education in the United States.

Time Limits and Average Time for Program Completion

All of Excelsior College nursing degree programs are designed to be completed at the student's own pace but must be completed within a specified period of enrollment. Time limits on enrollment are cumulative if enrollment is not continuous. Students who do not meet the time limit for program completion are subject to dismissal from the School of Nursing. The faculty recognize that the time limits are generous and believe they are appropriate because the students served by the College are working adults.

Associate degree in nursing

Students have seven years to complete the associate degree in nursing programs. The average time to completion for part-time students is three years.

Bachelor's degree in nursing

Students have seven years to complete the RN to bachelor's degree in nursing program. The average time to completion for part-time students is four years.

Master's degree in nursing

Students have seven years to complete the master's degree in nursing program. The average time to completion for part-time students is three years.

Registered Nurse to Master of Science in nursing completion program

Students have 12 years to complete the RN to MS in nursing program. The average time to completion for part-time students is five years.

Licensure

Excelsior College nursing programs are designed in accordance with the requirements for Registered Nurse programs in New York State. The associate degree programs prepare students for the National Council Licensure Examination for Registered Nurses (NCLEX-RN®) for practice in the United States. Excelsior College graduates who meet eligibility requirements are eligible to take the NCLEX-RN® in New York State.

Our graduates are eligible for licensure in most other states by examination or endorsement. However, states may have different requirements for pre-licensure education; students are responsible for determining the legal criteria for licensure in the state where they wish to practice. Some states have special licensure requirements for our graduates. Graduation

from a registered and accredited program does not guarantee eligibility for licensure; students may also need to meet other requirements regarding age, high school graduation, type of education, and so forth.

If the state in which you wish to be licensed is part of the national compact for licensure, ask about those specific requirements.

You must contact the boards of nursing in the states where you wish to practice for information about their specific licensure requirements.

Excelsior College graduates who are licensed as RNs in one state may be employed as RNs by Veterans Administration institutions or other federal facilities anywhere in the United States.

Individuals convicted of felonies or certain misdemeanors or individuals with a history of substance abuse may not be eligible for licensure or eligible to take the required performance examinations for the Excelsior College nursing degree.

You are encouraged to obtain a copy of the NCLEX-RN® Test Plan for the National Council Licensure Examination for Registered Nurses from the National Council of State Boards of Nursing Inc., 676 N. St. Clair St., Suite 550, Chicago, IL, 60611-2921. <http://www.ncsbn.org>

Criminal Background Checks

All students enrolled in an associate degree in nursing program must complete a criminal background check prior to applying to take the Clinical Performance in Nursing Examination (CPNE®). Refer to the CPNE® Study Guide or the Excelsior College website for detailed information about the purpose of the background check, process for obtaining the check, and submission of records with your CPNE® application.

Requirements for All Degree Programs

Written English Requirement

Students are required to demonstrate competence in expository writing in English by completing one of the following for the associate degree and two of the following for the bachelor's degree.*

1. Examination

- a. UExcel® exam **ENGx111 English Composition** (fulfills the requirement for associate and bachelor's degrees)
- b. UExcel® exam **ENGx110 College Writing** (fulfills the requirement for the associate degrees; partially fulfills the requirement for the bachelor's degrees)
- c. Advanced Placement (AP) English Examinations (fulfills the requirement for the associate and bachelor's degrees)

Excelsior College does not accept the CLEP General Examination in English Composition with Essay toward this requirement.

2. College coursework

Successful completion of one college course (minimum 3 semester or four quarter-hour credits; minimum grade of C) from one of the following options for the associate degrees, and from two of the following options for the bachelor's degrees:

- a. Expository writing courses such as Excelsior College's **ENG 101 English Composition**, **ENG 201 Writing for the Professions**, or **MLS 500 Graduate Research and Writing** (some restrictions apply).
- b. Two institutionally designated writing intensive, writing-emphasis courses.

- c. Two applied writing courses. The applied writing courses must focus on different applications of the writing process.

Coursework **must** be from an English speaking institution. English as a Second Language courses may not be used to satisfy the written English requirement.

3. Statement of Equivalency

Submission of an official statement from a regionally accredited institution, from which transfer credit is being accepted, verifying satisfactory completion of the student's writing requirement. The statement must reflect whether the institution had a one-course or two-course writing requirement in effect at the time of the student's matriculation.

4. Noncollegiate-sponsored instruction

Successful completion of a noncollegiate-sponsored instructional writing course or program that has been evaluated by either the New York State Board of Regents National College Credit Recommendation Service (formerly National PONSIS) or the American Council on Education Center for Adult Learning and Educational Credentials (ACE CREDIT), and contains a recommendation of at least 3 semester-hour credits for the course; this course must contain an actual assessment of the student's competence in expository writing in English.

A maximum of two semester courses or three quarter courses of credit in English composition/freshman English courses will apply toward degree requirements. Courses or examinations used to fulfill the written English requirement may not be used to satisfy the humanities requirement.

* The Bachelor of Science in nursing degree has a specific writing requirement beyond the freshman level, called *Expository Writing*, as detailed on [page 33](#).

Information Literacy

Students are expected to demonstrate competency in information literacy within the first 13 semester credits taken at Excelsior College. The standards, performance indicators, and outcomes for this requirement were selected from the Association of College and Research Libraries (ACRL) Information Literacy Competency Standards for Higher Education. Competency will be assessed through a one-credit pass/fail course offered online by Excelsior College or through successful completion of a course taken at a regionally accredited college covering comparable content.

Courses in information literacy will be considered for transfer if they were completed within five years prior to the date of the current enrollment in Excelsior College. Students who have completed a U.S. master's degree or higher from a regionally accredited or otherwise approved source of credit or who have earned a degree from an institution outside the U.S. deemed equivalent to a U.S. master's degree or higher by the College's international credential evaluators may be exempt from the information literacy requirement if the degree was earned within five years prior to enrollment at Excelsior. Excelsior College's **MLS 500 Graduate Research and Writing** course will satisfy the requirement if taken within five years prior to the current enrollment.

The information literate student will be able to:

- determine the nature and extent of the information needed.
- access needed information effectively and efficiently.
- evaluate information and its sources critically.
- incorporate selected information into his or her knowledge base and value system.

- understand many of the economic, legal, and social issues surrounding the use of information.
- access and use information ethically and legally.

Students seeking additional information should check the Excelsior College website or consult with an academic advisor.

Mathematics Policy

No more than three courses in the semester-hour system (four courses in the quarter-hour system) of college-level mathematics below the level of calculus can be applied toward degree requirements. Credit from courses listed as developmental or remedial cannot be applied toward degree requirements.

Excelsior College Nursing Pin

Excelsior College has a nursing school pin available to all graduates of the nursing programs. The pin features a reproduction of the Excelsior College logo. The nursing pin is a symbol of accomplishment, knowledge, and competence in nursing. Students will be notified that they are eligible to purchase a pin when they complete their degree program.



Associate Degree Programs in Nursing

Associate in Science and

Associate in Applied Science

Beliefs About the Practice of Associate Degree Nursing

The faculty believes that the practice of nursing at the associate degree level is well-defined through three complementary and interrelated nursing practice roles: provider of care, manager of patient care, and member of the profession. Nursing at the associate degree level is practiced in a variety of settings characterized by well-established policies, procedures, and protocols. Associate degree nursing practice requires a knowledge base that emphasizes facts, concepts, principles, theories, verified observations, critical thinking, and humanistic values. Associate degree nurses use the nursing process to meet the physiological, psychological, social, cultural, spiritual, and rehabilitative needs of clients. The focus/scope of practice for associate degree nurses is on the care of clients who are individuals or members of a family. Associate degree nurses care for clients whose adaptations and resources lead to an expected response to health problems. As providers of care, associate degree nurses deliver quality care, which assists in restoring and maintaining optimal health. As managers of patient care, associate degree nurses communicate and collaborate with other members of the health care team and with clients and their families to assure quality outcomes across the continuum of care. As members of the profession, associate degree nurses function as patient advocates within ethical and legal parameters and are accountable to society and to the profession for their practice.

Purpose of the Associate Degree Nursing Programs

The purpose of the Excelsior College associate degree nursing programs is to provide an alternative educational approach to earning an associate degree in nursing. The student's qualifications as a learned individual and a competent member of the nursing profession are documented through an objective assessment program in general education and nursing education designed to promote:

- proficiency in the practice of associate degree nursing.
- a sense of social responsibility and personal fulfillment by emphasizing the need for students to evaluate their own learning and potential achievements in terms of professional relevance and personal goals.
- a foundation for lifelong learning.

Your Personalized MyExcelsior Account:

www.excelsior.edu/MyExcelsior

Admissions:

toll free 888-647-2388, ext. 27

Fee Schedules, Financial Aid, and Scholarships:

www.excelsior.edu/fees

www.excelsior.edu/financialaid

www.excelsior.edu/scholarships

College Publications, Applications, and Forms:

www.excelsior.edu/publications

Student Policy Handbook:

www.excelsior.edu/studentpolicyhandbook

Course and Exam Information and Registration:

www.excelsior.edu/courses

www.excelsior.edu/exams

www.UExcelTest.com

Learning Resources:

www.excelsior.edu/myexcelsior, click on the Resources tab

Excelsior College Community Resources:

www.excelsior.edu/myexcelsior, click on the Communities tab

Educational Outcomes

1. Applies analytic reasoning and problem-solving skills, using principles, concepts, and theories from the natural and social sciences, to choose among alternative solutions to make clinical decisions.
2. Uses multiple strategies of communication to express self, convey caring, and establish collaborative partnerships with clients* and health care providers.
3. Participates in problem identification, assists in data collection, and uses interpreted research findings to plan and implement care.
4. In the role of **provider of care**:
 - Uses knowledge and skills to apply the nursing process to care for clients* in a variety of settings to restore and maintain health or provide end-of-life care.
 - Uses a holistic approach to prioritize and evaluate care delivered to clients across the continuum of the complex health care environment using established nursing standards and protocols.

In the role of **manager of care**:

- Identifies scope of practice for members of the health care team. Appropriately delegates and manages individuals to deliver care in a variety of settings.

In the role of **member of profession**:

- Practices within the ethical, legal, and regulatory frameworks of nursing and standards of professional nursing practice.
- Articulates the contributions of professional nursing to health care.
- Advocates for the rights of clients and members of the profession of nursing.

5. Demonstrates a pattern of human-centered behaviors by maintaining an environment that signifies caring, sensitivity, and cultural competence with others.

* clients: individual within the context of the family.



Associate in Science and Associate in Applied Science in **Nursing**

AS/AAS
67 Total Degree
Credits Required

GENERAL EDUCATION COMPONENT		Credit Hours	NURSING COMPONENT		Credit Hours
Information Literacy		1	PHASE I		
Written English Requirement ^①		3	NURx108/NUR 108 Transition to the Professional Nurse Role ^⑤		3
Total Written English Requirement		3	NURx104/NUR 104 Essentials of Nursing Care: Health Safety		3
Humanities Requirement		6	NURx105/NUR 105 Essentials of Nursing Care: Health Differences ^⑦		3
Total Humanities		6	NURx109/NUR 109 Foundations in Nursing Practice		3
Life Span Developmental Psychology Core		3	PHASE II		
Sociology Core		3	NURx209/NUR 209 Reproductive Health		3
Total Social Sciences		6	NURx211/NUR 211 Health Differences Across the Life Span 1		3
Human Anatomy and Physiology Core ^{②⑨}		4	NURx212/NUR 212 Health Differences Across the Life Span 2		3
Microbiology Core ^⑨		3	NURx213/NUR 213 Health Differences Across the Life Span 3		3
Mathematics		2	PHASE III		
Total Natural Sciences and Mathematics		9	FOCUSED CLINICAL COMPETENCIES ASSESSMENT		
AS ONLY Arts & Sciences Electives ^③		6	NURx274A FCCA®: Head-to-Toe Assessment/Nursing Process ^⑥		2
AAS ONLY Free Electives/Arts & Sciences ^④		6	NURx274C FCCA®: Managing Multiple Patients/Working in Interdisciplinary Health Care Teams ^⑥		2
Total General Education Component		31	PHASE IV		
NOTE: Requirements listed with an "x" in the prefix indicate examinations; requirements listed without an "x" in the prefix indicate courses.			NURx299 Clinical Performance in Nursing Examination (CPNE®) ^⑧		8
			Total Nursing Component		36

- ^① This requirement must be completed within the first 13 Excelsior College credits attempted.
- ^② The Human Anatomy and Physiology requirement can also be met by **Anatomy** (2 credits) and **Physiology** (2 credits)
- ^③ Requirements for the AS degree include a minimum of six credits of arts and science electives.
- ^④ Requirements for the AAS degree include a minimum of six credits of free electives or arts and science electives.
- ^⑤ Only the **NURx108** examination is available to individuals not enrolled in the Excelsior College School of Nursing.
- ^⑥ Students are eligible to take this requirement when all 8 of the nursing theory requirements and 21 of the required 31 credits in general education are successfully completed.
- ^⑦ **NURx105** can be waived if you hold a valid and current U.S. LPN/LVN license and have demonstrated success on the NCLEX-PN within

five years prior to enrollment in the School of Nursing. Submit a copy of your LPN/LVN license and official transcript so that your academic advisor can validate your license and award you credit for this examination.

- ^⑧ This examination may be scheduled after the entire FCCA® requirement is successfully completed.
- ^⑨ Must be completed no more than five years prior to the date of enrollment and before any nursing component requirements.

Associate Degree Requirements: General Education and Nursing



Both the Associate in Science and the Associate in Applied Science require a total of **67** credits—**31** in general education and **36** in nursing. The two degrees have identical nursing component requirements, but they differ in their general education requirements. **The chart on page 11** offers a visual representation of the AS and AAS programs.

You are subject to the degree requirements in effect at the time of your enrollment or program/degree transfer (program transfer refers to change from one school to another; degree transfer refers to changing degrees within the same school).

The faculty reserves the right to make changes in curricular requirements as necessary to reflect current professional practice. Changes may affect both enrolled and prospective students. It is your responsibility to keep informed of such changes. We make every effort to inform you of changes as they occur. Current information about degree requirements is posted on our website. Information about changes to degree requirements is also made available on our **website**.

General Education Component

31 credits

The general education requirements ensure that you develop basic college-level competence in the arts and sciences areas (humanities, social sciences/history, and natural sciences/mathematics) as well as the ability to express yourself in writing, read analytically, and think critically.

The study of the arts and sciences is an essential part of the preparation of a college graduate in that such study helps develop both knowledge in the discipline and an intellectual approach to problem solving. For a complete list of general education outcomes, see **page viii**.

Requirements listed with an “x” in the prefix indicate examinations; requirements listed without an “x” in the prefix indicate courses.

Associate in Science

Thirty of 31 required general education credits must be earned in the arts and sciences. One credit must be earned in information literacy. Credits must be distributed as follows:

1. Information Literacy

Students are expected to demonstrate competency in information literacy. This requirement provides a broad overview of information literacy concepts. Please see Information Literacy on **page 7** for more information.

The information literacy requirement must be completed within the first 13 Excelsior College credits attempted. The Excelsior College INL 102 **Information Literacy** online course meets this requirement.

Register at www.excelsior.edu/courses.

2. Written English Requirement

Three credits are required in expository writing, which may be at the freshman level. (See Written English Requirement on **page 6** for specific details.)

The UExcel® exam **ENGx110 College Writing** meets this requirement.

3. Humanities Distribution and Core Requirements

The humanities requirements are designed to help you learn to read critically, reason well, think logically and critically, and express aesthetic appreciation.

A minimum of 6 credits must be earned in subjects such as art (e.g., appreciation, history, or studio), English, ethics, literature, music, philosophy, religion, theater, speech, and foreign languages (e.g., technical writing).

Within the humanities distribution, students are required to complete a “core” requirement, which must be a minimum of 3 credits in a humanities subject other than English composition or expository writing. One introductory, applied, or professional writing course beyond the written English requirement may apply to the humanities distribution.

The following UExcel® exams will fulfill the humanities core requirement: **MUSx101 Introduction to Music**, **HUMx310 Bioethics: Philosophical Issues**, and **PHIx310 Ethics: Theory & Practice**.

4. Social Sciences/History Distribution and Core Requirements

This requirement is designed to provide you with a better understanding of people and society and the processes that individuals use to order their world. Studies of Western and other cultures are encouraged.

A minimum of 6 credits must be earned in subjects such as sociology, psychology, anthropology, history, geography, political science, and economics.

Within the social sciences/history distribution, students are required to complete the life span developmental psychology and sociology core requirements.

The following UExcel® exam meets the life span developmental psychology core requirement: **PSYx210 Life Span Developmental Psychology**.

The following UExcel® exam meets the sociology core requirement: **SOCx310 Foundations of Gerontology**.

5. Natural Sciences/Mathematics Distribution and Core Requirements

The natural science/mathematics requirement is designed to provide you with the scientific background essential to nursing practice and an understanding of the natural world as well as teach you problem-solving skills.

Within the natural sciences/mathematics distribution, students are required to complete 9 credits including the core requirements of human anatomy and physiology (minimum 4 credits, covering all major body systems), microbiology (minimum 3 credits), and the college-level mathematics requirement.

The science courses must be of the depth and breadth appropriate for preparation as a registered nurse. Survey courses are not acceptable.

All students who enroll on or after October 1, 2012 must complete the anatomy and physiology core and the microbiology core requirements no more than five years prior to the date of enrollment. The anatomy and physiology core and the microbiology core requirements must be completed before registering for any associate degree (AD) theory examinations or courses, with the exception of **Transition to the Professional Nurse Role**. Students who withdraw from an AD program in nursing, or withdraw or graduate from any other Excelsior College degree program, and reenroll in the AD in nursing program are subject to the anatomy and physiology and microbiology time limits and requirements even if they have previously completed the Excelsior College examinations or taken courses that applied during a previous enrollment.

The following Excelsior College courses and UExcel® exam satisfy the anatomy and physiology core requirement:

BIOx210 Anatomy & Physiology or

HSC 105 Anatomy and Physiology I and

HSC 106 Anatomy and Physiology II

The following Excelsior College course and UExcel® examination satisfy the microbiology requirement:

BIOx220 Microbiology

BIO 212 Microbiology

All students who enroll on or after October 1, 2012, must complete the anatomy and physiology and the microbiology requirements no more than 5 years prior to the date of enrollment. The anatomy and physiology and the microbiology requirements must be completed before registering for any associate degree (AD) theory examinations with the exception of **Transition to the Professional Nurse Role**. Students who withdraw from an AD program in nursing, or withdraw or graduate from any other Excelsior College degree program, and reenroll in the AD in nursing program are subject to the anatomy and physiology and microbiology time limits and requirements even if they have previously completed the Excelsior College examinations or taken courses that applied during a previous enrollment.

Some state boards have specific requirements regarding the above-listed areas of study (e.g., some require a laboratory component for the science courses). Please be sure to check the licensure requirements in the state of your choice when planning your degree program.

6. Arts and Sciences Electives

An additional 6 credits are needed to satisfy general education requirements in the arts and sciences. These 6 credits may be distributed among the humanities, social sciences/history, and natural sciences/mathematics areas described above. Free electives (applied or professional courses) are not applicable to this requirement. You are encouraged to consider your interests carefully and to select subjects that complement your professional or personal interests. For example, if you are interested in working with elderly clients, you could complete examinations or courses in gerontology and the psychology of aging; or if you are interested in ethical issues, you might consider completing study in ethics, values, and philosophy. If you have a strong interest in the arts, you could study music, drama, or art. You are also encouraged to study a foreign language so you can communicate better with clients from other cultures. Always consult your advisor before registering for any examination or course.

Associate in Applied Science

Of the 31 required general education credits, at least 24 must be earned in the arts and sciences. Of the remaining 7 credits, 1 credit must be earned in information literacy and the other 6 credits must be earned in any academic area other than nursing or physical education. If you have a degree in another applied field such as education, health, business, social work, or respiratory therapy, you may find that the Associate in Applied Science in nursing allows you to apply more transfer credit toward the general education component.

1. Information Literacy

Students are expected to demonstrate competency in information literacy. This requirement provides a broad overview of information literacy concepts. Please see Information Literacy on [page 7](#) for more information.

The information literacy requirement must be completed within the first 13 Excelsior College credits attempted. The Excelsior College **INL 102 Information Literacy** online course meets this requirement.

Register at www.excelsior.edu/courses.

2. Written English Requirement

Three credits are required in expository writing, which may be at the freshman level. (See Written English Requirement on [page 6](#) for specific details.)

The UExcel® exam **ENGx110 College Writing** meets this requirement.

3. Humanities Distribution and Core Requirements

The humanities requirements are designed to help you learn to read critically, reason well, think logically and critically, and express aesthetic appreciation.

A minimum of 6 credits must be earned in subjects such as art (e.g., appreciation, history, or studio), English, ethics, literature, music, philosophy, religion, theater, speech, and foreign languages (e.g., technical writing).

Within the humanities distribution, students are required to complete a “core” requirement, which must be a minimum of 3 credits in a humanities subject other than

English composition or expository writing. One introductory, applied, or professional writing course beyond the written English requirement may apply to the humanities distribution.

The following UExcel® exams will fulfill the humanities core requirement: **MUSx101 Introduction to Music**, **HUMx310 Bioethics: Philosophical Issues**, and **PHIx310 Ethics: Theory & Practice**.

4. Social Sciences/History Requirements

This requirement is designed to provide you with a better understanding of people and society and the processes that individuals use to order their world. Studies of Western and other cultures are encouraged.

Within the social sciences/history distribution, students are required to complete the life span developmental psychology and sociology requirements.

The following UExcel® exam meets the life span developmental psychology requirement: **PSYx210 Life Span Developmental Psychology**.

The following UExcel® exam meets the sociology requirement: **SOCx310 Foundations of Gerontology**.

5. Natural Sciences/Mathematics Requirements

The natural sciences/mathematics requirement is designed to provide you with the scientific background essential to nursing practice and an understanding of the natural world as well as teach you problem-solving skills.

Within the natural sciences/mathematics distribution, students are required to complete 9 credits of natural sciences supportive of nursing that will include the human anatomy and physiology (minimum 4 credits), microbiology (minimum 3 credits), and college-level mathematics requirements.

A combined human anatomy and physiology course must include all major body systems and must be at least 4 credits. Survey courses are not acceptable.

All students who enroll on or after October 1, 2012 must complete the anatomy and physiology and the microbiology requirements no more than

five years prior to the date of enrollment. The anatomy and physiology and the microbiology requirements must be completed before registering for any associate degree (AD) theory examinations with the exception of **Transition to the Professional Nurse Role**. Students who withdraw from an AD program in nursing, or withdraw or graduate from any other Excelsior College degree program, and reenroll in the AD in nursing program are subject to the anatomy and physiology and microbiology time limits and requirements even if they have previously completed the Excelsior College examinations or taken courses that applied during a previous enrollment.

Some state boards have specific requirements regarding the above-listed areas of study (e.g., some require a laboratory component for the science courses). Please be sure to check the licensure requirements in the state of your choice when planning your degree program.

6. Free Electives/Arts and Science Electives

The additional 6 credits may be earned in any of the above arts and sciences areas **or** in other college-level subjects such as health, business, computer science, counseling, education, or nutrition. Credit from associate-level nursing courses, physical education activity courses, and courses listed as remedial or developmental cannot be used to satisfy general education degree requirements.

IMPORTANT:

Throughout this catalog the term “credits” is used to indicate semester hours. Quarter hours are converted to semester hours by multiplying quarter-hour values by two-thirds.

Nursing Component for Both Associate Degrees in Nursing

36 credits

The nursing component is designed to ensure that you possess competence in theory and performance in nursing comparable to the competence of graduates of campus-based associate degree nursing programs. The curriculum is designed to facilitate achievement of the educational program outcomes determined by the faculty.

The two Excelsior College associate degree programs have identical nursing component requirements. In order to satisfy the 36-credit nursing component requirements, students must complete eight nursing theory requirements, the two-part Focused Clinical Competencies Assessment (FCCA®), and the Clinical Performance in Nursing Examination (CPNE®).

The nursing component is divided into four phases. For students enrolling on or after January 1, 2014, Phase I requirements are prerequisites to Phase II requirements.

All students, regardless of enrollment date, must complete all nursing theory requirements and 21 credits of general education before they are eligible for the FCCA®. Please see each requirement's description for its prerequisites.

The School of Nursing now offers online nursing theory courses as an alternative to the nursing theory examinations. The eight online courses cover the same content and use the same textbooks as the nursing examinations. The difference is in how students learn the material. The exam or assessment-based path allows students to study at their own pace and, when ready, take an examination to demonstrate mastery of the subject matter.

Courses have a defined start and end date within an eight-week period during which time students are required to complete assignments and interact with other students and the faculty. They are similar to campus-based courses in this regard. However, since they are offered in an asynchronous format, students have some flexibility as to when they log in and participate in learning activities.

The content of the eight nursing theory examinations and online courses corresponds to that which is typically included in the curricula of associate degree nursing programs at accredited community colleges. The examinations assess essential knowledge of medical, surgical, maternity, pediatric, and psychiatric nursing as integrated with knowledge related to growth and development, nutrition and pharmacology, ethical and legal issues, and the arts and sciences.

All nursing theory examinations are multiple choice. Content guides are available, and provide an outline of the topics covered, a list of study resources, sample questions, and a how-to-prepare section. All resources are recommended by the Excelsior College faculty, who develop the examinations. Students should plan to spend a total of 135 hours or more in preparation for each nursing theory examination. The passing score for the Excelsior College nursing theory examinations is a scaled score, which is equivalent to a C grade.

The nursing theory courses are online and asynchronous. Each course is eight weeks long, and requires weekly online discussions, writing assignments, and quizzes. Students should plan to spend 18 hours or more per week to complete coursework. The passing grade for a nursing theory online course is C.

There is a limit on the number of times a student may repeat the same nursing theory course and/or examination. Please refer to the Student Policy Handbook for details on this policy.

As of July 1, 2013, all grades earned on Excelsior College nursing theory exams and online courses (including "D," "F" and "W" grades) will be posted on academic record and on the Excelsior College transcript. This includes grades earned in any Excelsior course or Excelsior College Examination, the Focused Clinical Competencies Assessment (FCCA®) and the Clinical Performance in Nursing Examination (CPNE®). These grades will be calculated into the GPA.

Phase III of the nursing component is comprised of the Focused Clinical Competencies Assessment.

The FCCA® is a computer-delivered, simulated clinical assessment with two components:

- NURx274A FCCA: Head to Toe Assessment and Nursing Process
- NURx274C FCCA: Managing Multiple Patients/Working in Interdisciplinary Health Care Teams

You will be eligible for the FCCA® when you have successfully completed all of the nursing theory examinations (Phases I and II) and 21 of the required 31 credits in general education. These assessments are scored as a pass or fail, and 2 credits are awarded upon successful completion of each component.

Phase IV of the nursing component is comprised of the Clinical Performance in Nursing Examination. You will be eligible for the CPNE® when you have completed both components of the FCCA®. The CPNE® is a criterion-referenced performance assessment and is graded as a pass or fail. It is administered in the acute care environment (i.e., a hospital setting). It is an assessment of clinical competencies focusing on your ability to identify, plan for, and meet a variety of nursing care needs for adult and pediatric patients with common health problems. Critical thinking skills and caring behaviors needed to provide and manage care for patients are also assessed.

A description of each nursing theory requirement, the FCCA®, and the CPNE® follows.

Phase I: Nursing Theory requirements

NURx108/NUR 108 Transition to the Professional Nurse Role 3 credits

Prerequisites: None. This requirement was formerly NURx214/NUR 214 Transition to the Registered Professional Nurse Role.

Assesses knowledge and skills related to the registered nurse professional role development (provider and manager of care, and member of profession). The managerial, supervisory, and delegation functions of the registered nurse are introduced. Recognition of the differences among associate, baccalaureate, and graduate-prepared

nursing roles are discussed, along with: factors affecting the health care delivery system; role functioning of interdisciplinary teams; and legal, ethical, and educational aspects of current nursing practice. Also explored are influences of nursing history, nursing organizations, and regulatory bodies impacting nursing functions in the delivery of care.

Delivery: **NURx108** is a computer-based, multiple choice theory examination. **NUR 108** is an online course delivered over 8 weeks.

NURx104/NUR 104 Essentials of Nursing Care: Health Safety 3 credits

Prerequisites: Anatomy and physiology (all body systems), and microbiology

Includes the concepts related to the nursing roles of provider and manager of care and member of profession. These roles are discussed when applying the nursing process and concepts of safety (medication, biological, psychosocial, environmental) to care for patients across the life span who are responding to common health needs related to health promotion, wellness, and illness. Critical thinking skills and caring behaviors needed to provide and manage care for these patients are stressed. Evidence-based nursing care and standards for nursing practice, as well as ethical, legal, and regulatory concerns specific to these patients are addressed.

The nursing process is the framework for presenting this content. The five steps of the nursing process are: (a) assessment—gathering and organizing data in relation to the patient's health status; (b) analysis—identifying the patient's actual and potential health problems (nursing diagnosis); (c) planning—determining expected patient-centered outcomes and formatting strategies to achieve them; (d) implementation—initiating and completing the nursing plan of care; and (e) evaluation—determining the progress toward meeting the expected patient-centered outcomes.

Delivery: **NURx104** is a computer-based, multiple choice theory examination. **NUR 104** is an online course delivered over 8 weeks.

**NURx105/NUR 105 Essentials of
Nursing Care: Health Differences** 3 credits

Prerequisites: Anatomy and physiology (all body systems), and microbiology

Concepts and principles related to the application of the nursing roles as provider and manager of care and member of profession are discussed when applying the nursing process to care for patients across the life span to support health and alleviate common health deviations related to nutrition, elimination, oxygenation, fluid and electrolyte balance, and rest and activity. Critical thinking skills and caring behaviors needed to provide and manage care for these patients are stressed. Evidence-based nursing care and standards for nursing practice, as well as ethical, legal, and regulatory concerns specific to these patients are addressed.

The nursing process is the framework for presenting this content. The five steps of the nursing process are: (a) assessment—gathering and organizing data in relation to the patient's health status; (b) analysis—identifying the patient's actual and potential health problems (nursing diagnosis); (c) planning—determining expected patient-centered outcomes and formatting strategies to achieve them; (d) implementation—initiating and completing the nursing plan of care; and (e) evaluation—determining the progress toward meeting the expected patient-centered outcomes.

This requirement can be waived if you hold a valid and current U.S. LPN/LVN license and have demonstrated success on the NCLEX-PN® within five years prior to enrollment in the School of Nursing. Submit a copy of your LPN/LVN license and official LPN/LVN program transcript so that your academic advisor can validate your license and award you credit for this requirement.

Delivery: **NURx105** is a computer-based, multiple choice theory examination. **NUR 105** is an online course delivered over 8 weeks.

**NURx109/NUR 109
Foundations in Nursing Practice** 3 credits

Prerequisites: Anatomy and physiology (all body systems), and microbiology. This requirement was formerly NURx106/NUR 106 Essentials of Nursing Care: Chronicity.

Concepts and principles related to the nursing roles of provider and manager of care and member of profession are discussed. Application of the nursing process to the care of culturally diverse patients across the life span who are experiencing chronic illness, disability, or end of life, who have a primary health concern of discomfort, pain, or sensory impairment, and whose primary base of care is a community setting. Critical thinking skills and caring behaviors needed to provide and manage care for these patients are stressed. Evidence-based nursing care and standards for nursing practice, as well as ethical, legal, and regulatory concerns specific to these patients are addressed.

The nursing process is the framework for presenting this content. The five steps of the nursing process are: (a) assessment—gathering and organizing data in relation to the patient's health status; (b) analysis—identifying the patient's actual and potential health problems (nursing diagnosis); (c) planning—determining expected patient-centered outcomes and formatting strategies to achieve them; (d) implementation—initiating and completing the nursing plan of care; and (e) evaluation—determining the progress toward meeting the expected patient-centered outcomes.

Delivery: **NURx109** is a computer-based, multiple choice theory examination. **NUR 109** is an online course delivered over 8 weeks.

Phase II: Nursing Theory requirements

NURx209/NUR 209 Reproductive Health 3 credits

Prerequisites: All Phase I requirements, anatomy and physiology (all body systems), and microbiology. This requirement was formerly NURx107/NUR 107 Essentials of Nursing Care: Reproductive Health.

Concepts and principles related to the nursing roles of provider and manager of care and member of

profession are discussed when applying the nursing process to the care of patients across the life span with needs related to human sexuality, needs of the childbearing family, congenital anomalies, genetic disorders, and reproductive disorders. Critical thinking skills and caring behaviors needed to provide and manage care for these patients are stressed. Evidence-based nursing care and standards for nursing practice, as well as ethical, legal, and regulatory concerns specific to these patients are addressed.

Delivery: **NURx209** is a computer-based, multiple choice theory examination. **NUR 209** is an online course delivered over 8 weeks.

a variety of psychiatric disorders including cognitive impairments; regulatory mechanisms include patients with adrenal, thyroid, parathyroid, pituitary, and kidney disorders; metabolic disorders include patients with liver, gall bladder, and pancreatic disorders. Critical thinking skills and caring behaviors needed to provide and manage care of these patients are stressed. Evidence-based nursing care and standards of nursing practice, as well as ethical, legal, and regulatory concerns specific to these patients are addressed.

Delivery: **NURx212** is a computer-based, multiple choice theory examination. **NUR 212** is an online course delivered over 8 weeks.

NURx211/NUR 211 Health Differences Across the Life Span 1

3 credits

Prerequisites: All Phase I requirements, anatomy and physiology (all body systems), and microbiology

Concepts and principles related to the nursing roles of provider and manager of care and member of profession are discussed when applying the nursing process to care for patients across the life span who are experiencing health differences related to cardiovascular and respiratory illness, or who are experiencing abnormal cell growth. Critical thinking skills and caring behaviors needed to provide and manage care for these patients are stressed. Evidence-based nursing care and standards for nursing practice, as well as ethical, legal, and regulatory concerns specific to these patients are addressed.

Delivery: **NURx211** is a computer-based, multiple choice theory examination. **NUR 211** is an online course delivered over 8 weeks.

NURx212/NUR 212 Health Differences Across the Life Span 2

3 credits

Prerequisites: All Phase I requirements, anatomy and physiology (all body systems), and microbiology

Concepts and principles related to the nursing roles of provider and manager of care and member of profession, when applying the nursing process to care for patients across the life span who are experiencing behavioral, regulatory, and metabolic health differences. Behavioral responses include patients with

NURx213/NUR 213 Health Differences Across the Life Span 3

3 credits

Prerequisites: All Phase I requirements, anatomy and physiology (all body systems), and microbiology

Concepts and principles related to the nursing roles of provider and manager of care and member of profession are discussed when applying the nursing process to care for patients across the life span who are experiencing health differences related to infectious and communicable diseases, tissue trauma, neurological dysfunction, and musculoskeletal disorders. Critical thinking skills and caring behaviors needed to provide and manage care for these patients are stressed. Evidence-based nursing care and standards for nursing practice, as well as ethical, legal, and regulatory concerns specific to these patients are addressed.

The nursing process is the framework for presenting this content. The five steps of the nursing process are: (a) assessment—gathering and organizing data in relation to the patient's health status; (b) analysis—identifying the patient's actual and potential health problems (nursing diagnosis); (c) planning—determining expected patient-centered outcomes and formatting strategies to achieve them; (d) implementation—initiating and completing the nursing plan of care; and (e) evaluation—determining the progress toward meeting the expected patient-centered outcomes.

Delivery: **NURx213** is a computer-based, multiple choice theory examination. **NUR 213** is an online course delivered over 8 weeks.

Phase III

Focused Clinical Competencies Assessment® (FCCA®) 4 credits

Prerequisites: Students are eligible to take the FCCA® when they have successfully completed 21 of the required 31 credits in general education and all eight nursing theory requirements.

This requirement consists of two eight-week clinical assessments delivered via the Excelsior College learning management system, and following the College's course term dates. The *FCCA® Review Guide* will be provided upon eligibility for this requirement. The FCCA® provides a means for students to demonstrate competencies related to the following two essential components of nursing practice:

- NURx274A FCCA: Head-to-Toe Assessment/Nursing Process
- NURx274C FCCA: Managing Multiple Patients/Working in Interdisciplinary Health Care Teams

Upon successful completion of each portion of the FCCA® (above), 2 credits will be awarded. Students must complete these assessments through Excelsior College.

Phase IV

NURx299 Clinical Performance in Nursing Examination (CPNE®) 8 credits

Prerequisites: Students are eligible to schedule the CPNE® when they have successfully completed the entire FCCA® requirement. In addition, a criminal background check report is required with submission of the CPNE® application. See the CPNE® Study Guide or our website for information about criminal background checks.

The CPNE® tests application of the nursing process and technical components of nursing practice in the care of adults and children in the acute care setting. Patients in these settings are experiencing potential, actual, and/or recurring health problems requiring maintenance and restorative interventions.

The CPNE® is organized around three phases of the nursing process: planning, implementation, and evaluation. The planning phase includes assessment and analysis of information necessary for identifying

nursing diagnoses. Nursing interventions are based on accurate assessments of the patient's response to health problems. Care of the patient is designed to maintain, restore, alleviate, or rehabilitate, and is then evaluated for effectiveness. Critical thinking, diagnostic reasoning, use of knowledge from nursing and related disciplines, and standards of care are assessed in this examination.

Students must complete this requirement through Excelsior College.

The *CPNE® Study Guide* provides information on the process and content of this criterion-referenced performance examination and on the criteria for success. A DVD and workbook, workshops, teleconferences, and online programs are also available to assist students in learning the necessary competencies. Enrolled students are sent the study guide when they meet the eligibility requirements. Student may contact a member of the nursing faculty via telephone or the Message Center with any questions about the examination. It is essential to use the study guide to prepare for the CPNE®, focusing on areas of care and critical elements to guide study and practice. Students who use a variety of learning resources and take a thorough and detailed approach when preparing for the examination are more likely to be successful. This examination may not be waived under any circumstances.

Included in the *CPNE® Study Guide* are instructions for submitting an examination application electronically and information about the required documents to be submitted with the application, including the criminal background check. The study guide is designed to be a guide for use in preparing for the examination and is intended to serve as a supplement to information in nursing textbooks, i.e., it is intended to guide study, but does not replace in-depth information provided in nursing textbooks. Additional learning resources are listed in the *CPNE® Study Guide* and the Student Support Services section of the *General Information Guide*.

Meeting Requirements

All students enrolling on or after October 1, 2012 need to have completed anatomy and physiology and microbiology within five years prior to enrollment if they are seeking transfer of those credits. In addition, all students must successfully complete the anatomy and physiology and microbiology requirements before registering for any AD in nursing theory requirements with the exception of **Transition to**

the **Professional Nurse Role**. The faculty strongly recommends that all natural and social science requirements be completed before taking any nursing examinations.

Meeting Specific Requirements

The following requirements must be completed with a grade of “C” or higher. Courses less than 2 semester credits will not apply to meet these specific requirements.

- | | |
|-----------------------------|--------------------------------------|
| ■ College-level Mathematics | ■ Life Span Developmental Psychology |
| ■ Humanities | ■ Microbiology |
| ■ Human Anatomy | ■ Sociology |
| ■ Human Physiology | ■ Written English |

A combined human anatomy and physiology course must be at least 4 semester credits.

Excelsior College® Examinations and Online Courses

The nursing theory requirements are the primary method for acquiring and documenting the required associate degree-level theoretical knowledge in the nursing component. The order of requirements depicted on the preceding pages is the suggested sequence. *The faculty strongly recommends that all natural and social science requirements be completed before taking any nursing examinations.* Students enrolling on or after October 1, 2012 are held to additional program requirements for anatomy and physiology and microbiology as described on [page 13](#).

The theory examinations are administered via computer on an appointment basis at Pearson Testing Centers throughout the United States and Canada as well as in other selected locations.

Contact Excelsior College for examination content guides, applications, and information about Pearson Testing Center locations and examination fees. Write or call:

Test Administration Office, Excelsior College
7 Columbia Circle, Albany, NY 12203-5159
518-464-8500 or call toll free:
888-72EXAMS (888-723-9267)

Policies Specific to the Associate Degrees in Nursing

The Excelsior College *Student Policy Handbook* is your resource for understanding the academic and administrative policies that are important to your academic success. It includes a wide range of information from important federal policies, including your right to privacy, to grading policies and policies and procedures concerning refunds, withdrawals, and other administrative issues. It is your responsibility to be familiar with these policies.

Policies and procedures that apply specifically to the associate degrees in nursing are listed on the following pages. Please file your *Handbook* with your other important academic papers and this program catalog for easy reference.

Admission

The associate degree programs are open to licensed practical/vocational nurses, paramedics, selected classifications of military service corpsmen, and individuals who hold degrees in clinically oriented health care fields in which they have the opportunity to provide direct patient care (e.g., physicians, respiratory therapists, and physician assistants). The necessary documentation, such as copies of licenses, certificates, and official transcripts, must be submitted with the admissions application. The Undergraduate Application for Admission identifies required supporting documentation for admission by each category of applicant as well as additional admission criteria.

Military Personnel

Admission to the associate degree in nursing program is limited to military personnel who are on active duty, in the reserves, or have a discharge date within one year of enrollment into the Excelsior College School of Nursing. See the [undergraduate application for admission](#) for a listing of the military occupations that meet the admission criteria.

Minimum Academic Average

Grades of D are not acceptable in transfer. Grades of D and F earned in any Excelsior College course or general education examination will be listed on your status report and official transcript and will be calculated in the GPA. As of July 1, 2013, grades of D and F awarded for Excelsior College nursing theory examinations will be calculated into the GPA; they will be listed on academic plan documents and the official transcript. In order to graduate, students must have a cumulative average of C (2.0) or better. **Although grades of D for Excelsior College courses may be accepted for credit in the general education component (except where otherwise specified), students must have the necessary grades to achieve a C average.**

Time Limits

The associate degree in nursing program is designed to be completed at your own pace. Students enrolled in either the AS or AAS program are required to complete all degree requirements within a **seven-year period** of enrollment. This time limit on enrollment is cumulative if enrollment is not continuous. **Those who do not complete the program within this time may be subject to dismissal.**

General Education Component

With the exception of the information literacy, anatomy and physiology core, and microbiology core requirements, there are no time limits on general education examinations or courses submitted for transfer credit. Credits earned at regionally accredited degree-granting institutions or through approved examination programs and for which official transcripts are available will be evaluated regardless of when they were completed.

You should plan carefully, consulting with your academic advisor about the examinations and courses to take to fulfill degree requirements. We recommend that you obtain prior approval from your academic advisor before applying or registering for an examination or course. Prior approval should be obtained by submitting a catalog description or official course outline; include the full name of the institution offering the course. Information should be sent via mail, fax, or the Message Center, along with full name and student identification number, well in

advance of the registration deadline. It may take up to two weeks to receive a written reply.

If you do not have time to obtain approval in writing, contact the College for tentative approval. When speaking with an academic advisor, have all the necessary information available, including the name of the institution, the course title and course number, the academic department under which the course is offered, and the catalog content description. The advisor can give tentative approval by phone if the course appears to meet requirements, but final approval will not be sent until the catalog description has been verified. In choosing courses to meet the general education requirements, you should consider selections that will help to meet future educational or professional goals.

Nursing Theory Examinations Policies

Policy on Registration Limitations for Nursing Computer-Delivered Exams

A student enrolled in the associate degree in nursing program may be registered for a total of four nursing theory examinations at any one time. A student may register for additional nursing theory examinations once an exam has been completed provided the total number of scheduled examinations and pending examinations does not exceed four.

Policy on Repeating Nursing Computer-Delivered Exams

Students enrolled in the associate degree in nursing program may take the computer-delivered theory examinations and/or the online theory courses up to a total of four times. Failure of the examination at the fourth administration or failure of the equivalent online course for the third administration will lead to academic dismissal from the nursing program. Prospective students who fail an examination at the fourth administration will be denied admission to Excelsior College nursing programs. The most recent nursing theory examination or course grade applies toward the degree.

Students may repeat an examination 60 days after the first attempt and 120 days after the second and subsequent attempts.

Focused Clinical Competency Assessment® (FCCA®) and Clinical Performance in Nursing Examination (CPNE®) Policies

Policy on Repeating the FCCA® and CPNE®

The FCCA® and CPNE® may be repeated twice for a total of three opportunities. Failure of either requirement at the third administration will lead to academic dismissal from the nursing program.

Students must complete these requirements through Excelsior College.

Technical Standards for the CPNE®

Technical standards are the required and essential abilities that an individual taking the CPNE® must effectively demonstrate as an Excelsior College associate degree nursing student.

Excelsior College is committed to the principle that every individual should have an equal opportunity to enroll in an Excelsior College degree program, to register for courses or examinations in order to demonstrate their knowledge and skills under appropriate conditions, and to complete a degree. The College seeks to assure access by providing reasonable accommodations to individuals with physical, mental, or learning disabilities recognized under the Americans with Disabilities Act of 1990 (ADA) and the ADA Amendments Act of 2008 (ADAAA). Reasonable accommodation is the provision of aids, or modification to testing, services, or a program of study, that allows access by individuals with disabilities.

The ADA defines a disability as “any mental or physical condition that substantially limits an individual’s ability to perform one or more major life activities” as compared with the average person in the general population. Major life activities include, but are not limited to, walking, seeing, hearing, speaking, breathing, performing manual tasks, concentrating, caring for one’s self, working, learning, and the operation of a major bodily function such as those of the immune system, respiratory system, etc.

The ADA requires an institution of higher education to provide reasonable accommodations to a qualified individual with a documented disability, provided that the accommodation does not create

undue hardship. An undue hardship refers to any accommodation that would be unduly costly, substantially disruptive, or that would fundamentally alter the nature of the program. Both matriculated and non-matriculated students may request reasonable accommodations from Excelsior College.

Additionally, the College is required to abide by the provisions of Section 504 of the Rehabilitation Act of 1973 which protect otherwise qualified individuals from discrimination based on their disability. In order to be otherwise qualified, a student with a disability must be capable, either with or without accommodation, of fulfilling the essential requirements of the educational program.

Individuals requesting reasonable accommodations are required to self-disclose to the disability services coordinator and submit a request in writing or an accessible format appropriate for their limitation, which generates a durable record.

The request must be accompanied by official documentation of the disability from an appropriate licensed professional, which must address the current functional limitation(s), the prognosis, and recommendation(s) of appropriate accommodation. Once eligibility has been established, accommodations are requested on a course-by-course (or exam-by-exam) basis.

The CPNE® tests a student’s application of the nursing process and technical components for



A student practices at a CPNE® workshop.

nursing practice in the care of adults and children in the acute care setting. Therefore, the nursing student must be able to perform the following:

- Assess, perceive, and understand the condition of assigned patients.
- See, hear, smell, touch, and detect subtle changes in colors.
- Communicate (both verbally and in writing) with English-speaking patients and/or family members/significant others as well as members of the health care team, including nurses, physicians, support staff, and faculty.
- Read and understand documents written in English.
- Perform diagnostic and therapeutic functions necessary for the provision of general care and emergency treatment to the hospital patient.
- Stand, sit, move, and maintain the physical effort necessary to meet the demands of providing safe clinical care.
- Solve problems involving measurement, calculation, reasoning, analysis, and synthesis.
- Perform nursing skills in the face of stressful conditions and exposure to infectious agents and blood-borne pathogens.

You can find information about disability services, examples of accommodation, and the accommodation request process on our website at www.excelsior.edu/disability-services.

Canceling a Nursing Performance Exam

To cancel the CPNE® do so with thought and consideration as a cancellation fee is charged. Notify the Regional Performance Assessment Center (RPAC) where you are scheduled to take the examination as soon as you are aware of the need to cancel a confirmed examination date. You are also required to submit a written request for cancellation. Cancellation fees are charged according to the cancellation policy included with the confirmation materials. Students who do not report to a scheduled examination will forfeit the full examination fee. Submission of another application form is required to reschedule a confirmed examination date.

Physical Education Courses

College courses in physical education can be applied toward the associate in applied science in nursing degree if they have a classroom component with a theoretical base and are applicable to the degree. Academic advisors may request course descriptions to verify the theoretical content of a physical education course.

Waiver of Excelsior College® Associate Degree in Nursing Theory Requirements

Under certain conditions, credits from previously completed associate-level nursing courses may be submitted for the purpose of requesting a waiver of an Excelsior College nursing theory requirement. Any requirement approved for waiver will be designated as a “pass” or “P” grade. Any such college coursework submitted for faculty review must:

- be from a regionally accredited degree-granting institution of higher education.
- have been completed no more than five years prior to the date of enrollment* in an Excelsior College nursing program.
- cover content equivalent to that of the theory requirement for which the waiver is sought.
- carry a grade of B or better.
- be submitted for faculty review before the theory examination or online course in that content area is taken.

Credit earned from most military service, foreign nursing schools, and occupational specialties may not be used to waive the nursing theory requirement because their course content is not equivalent to that of Excelsior College® Examinations or online courses. If you have this type of background, you should discuss options with an academic advisor.

Due to the comprehensive content of each Excelsior College nursing theory requirement, most students need a cluster of previous courses, including study of the care of adults and children, to meet the criteria

* If you transfer to a different degree program, the five-year time limit is based on the academic policy date for your new program.

for waiver. You are encouraged to obtain Excelsior College nursing theory examination content guides and/or course syllabi, and to review the content for comparison to courses already completed before submitting materials for waiver. This step may help determine which examinations or online courses to take while waiting for the faculty to make a decision regarding a waiver request.

Nursing courses from licensed practical vocational nursing programs and hospital diploma programs both in the United States and abroad are not eligible for transfer credit since they do not carry college-level credits. However, the learning acquired in such coursework is an important and valued asset and may be converted into academic credit by passing the Excelsior College® Examinations in nursing. See *Essentials of Nursing Care: Health Differences* for special considerations for waiver of that requirement by LPN/LVN graduates.

Should your enrollment lapse and you reenroll, you will lose any nursing credits earned more than five years prior to the new enrollment date. If you have waived any of the nursing theory requirements during a previous enrollment, you will not automatically receive waiver of those same requirements when reenrolling. Upon reenrollment, Excelsior College nursing faculty will review the courses again to determine applicability toward current degree requirements. Any requirement approved for waiver will be designated as a “pass” or “P” grade.

You may not request a waiver of a specific requirement if you have failed the Excelsior College examination or online course in that content area after completing the previous course. The FCCA® and CPNE® may not be waived under any circumstances. Students must complete these requirements through Excelsior College.

Planning for Degree Completion

The average time from initial enrollment to program completion for part-time study is three years. You are encouraged to enroll in the College to receive the necessary academic advisement necessary for degree completion.

When scheduling the Clinical Performance in Nursing Examination, you should plan for a three to five-month waiting period from the date the Regional Performance Assessment Center (RPAC) administrative office receives your completed application packet until the examination is administered.

This is an important consideration when planning for program completion. Complete applications are processed in the order they are received.

Regional Performance Assessment Centers

Excelsior College has developed a national network of Regional Performance Assessment Centers (RPACs). Each RPAC is responsible for scheduling and administering the Clinical Performance in Nursing Examination. For additional information about each RPAC, and a list of hospital test sites, visit the RPAC area on our website.

Learning Resources for AS and AAS Nursing Students

The primary resource for each requirement is the examination content guide, course syllabus, review guide, or study guide, along with the required textbooks. These guides and textbooks are intended to help guide learning and preparation for each requirement. Each guide identifies required textbooks to be used in learning the content of the particular requirement, as well as supplemental resources. Other learning resources include online chats hosted by nursing faculty via MyExcelsior Community and seminars to help guide you through the various requirements.

In order to help you achieve your educational goals, the Excelsior College School of Nursing offers a variety of learning services to you as an enrolled student:

- Access to academic advisors to assist with program planning.
- Access to members of the nursing faculty via phone and the Message Center to advise

you on preparing for the nursing theory and performance examinations.

- Individual 30-minute teleconference with faculty program directors for advisement related to examination preparation.
- Online chats and discussion groups to help you prepare for examinations.
- Video resources and workbooks to help you prepare for the nursing performance examinations.
- Workshops in various regions of the United States for the Clinical Performance in Nursing Examination.
- Online nursing conferences to help you prepare for the theory examinations and the CPNE®.
- Online practice exams for the theory examinations and several of the general education examinations.

If you have a question about a particular learning resource or want more information on the learning services available, including dates, fees, and locations offered, contact our LEARN team directly or visit our website.

Nursing Theory Examination: Online Conferences

These eight-week online conferences are designed to prepare you for the nursing theory examinations. The conference will improve your understanding of the nursing theory content. Through textbook readings, learning activities, case studies, pre/post tests, and discussion boards, the sessions will provide you with an opportunity to learn each of the areas tested in the examination as well as connect you with other students and nursing faculty who will answer any questions posed.

Nursing Theory Practice Examinations

If you are working toward an associate degree in nursing, you may take advantage of the Excelsior College practice examinations. Practice exams are available for all of the associate degree in nursing theory examinations as well as some of the general education requirements.

These exams are comprised of “retired” exam questions from previous versions of the respective exams. Students can take two forms of practice exams online at home within a 120-day period. Valuable feedback is provided as students learn how they performed on each question and why each answer was right or wrong. Although these exams are not predictive of anticipated student performance, students can improve their knowledge of the relevant subject material and upgrade their skills.

Clinical Performance in Nursing Examination (CPNE®) Workshop

This three-day interactive workshop is designed to enable you to understand the structure and process of the Clinical Performance in Nursing Examination (CPNE®) and validate your readiness to successfully complete the CPNE®. Your ability to perform the areas of care will be critiqued, and feedback will be provided related to a mock simulation lab and patient care situation. Our team of nursing faculty mentors offer these workshops in a variety of locations across the United States. Workshops are open to those individuals who are CPNE®-eligible.

A skills portion of the workshop is designed to provide you with the opportunity for “hands on” practice of specific clinical skills. Clinical management/assessment skills include: abdominal assessment, neurological assessment, skin management, medications (NG, IM, SubQ, IV, IV push), wound management (wet to moist), peripheral vascular assessment, patient teaching, respiratory management, vital signs, mobility, and musculoskeletal management. Working collaboratively with our nursing faculty and your fellow students, you will have the opportunity validate your knowledge and skill performance so as to develop a plan of action for successful completion of the CPNE®.

CPNE® Online Conferences

Beginning CPNE® Preparation

Beginning CPNE® Preparation is an online conference designed to provide the learner with one-on-one interaction, to introduce the learner to the CPNE® preparation. It will review the structure

and process of an actual CPNE® weekend, the criterion by which the learner will be evaluated, and how critical thinking and empowerment strategies are used during the examination. In addition, the design, function, and use of the required *Handbook of Nursing Diagnosis* will be reviewed. This online conference can be accessed at any time during the two-week session (24 hours per day, for two weeks).

Nursing Care Planning

This online conference is designed to be completed during a three-week period. The one-on-one guided learning interaction will enhance your skill in applying the nursing process to manage patient problems. It is designed to provide you with the skills necessary to maximize your nursing care plan preparation. The guided learning interaction will enhance your understanding of the application of the nursing process through self assessment and problem-solving patient care situations. Successful completion of the CPNE® requires you to develop and implement a nursing care plan that is congruent with standards of nursing practice and medical regimens. This online conference can be accessed at any time during the three-week session (24 hours per day, for three weeks).

Documentation

This online conference is designed to be completed in two weeks. The one-on-one guided learning interaction will enhance your ability to accurately document patient information in a manner consistent with the required critical elements of the CPNE®. In addition, you will self-assess the completed documentation to validate your understanding of the CPNE® requirements. This online conference can be accessed at any time during the two-week session (24 hours per day, for two weeks).

Skills

This online conference is developed to be completed in four weeks. This online conference has been developed to help you identify your strengths and weaknesses as they relate to specific CPNE® skills. The clinical management/assessment skills included are: asepsis, vital signs, abdominal assessment, neurological assessment, peripheral vascular assessment, respiratory assessment/management, medication administration (IM, SubQ, IV, IV push, and others), oxygen management, wound management/skin assessment, and musculoskeletal management. Our nursing faculty is available to answer questions and provide the support needed to



A student practices at a CPNE® workshop.

be successful with the skills included in this online conference. In addition, the online conference provides an overview of the structure and process of the CPNE®. This online conference can be accessed anytime during the four-week session (24 hours per day, for four weeks).

Additional CPNE® Learning Resources

CPNE® Preparation Video and Interactive Workbook

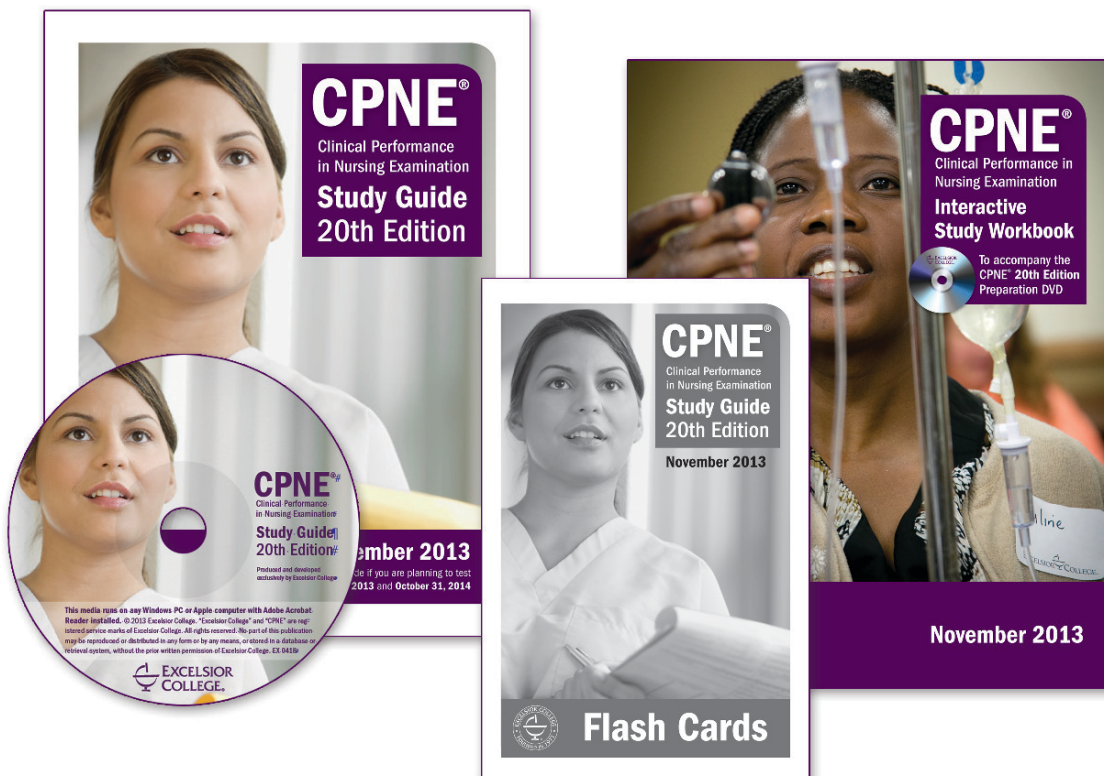
This 90-minute CPNE® orientation video is designed as a visual supplement to the *Clinical Performance in Nursing Examination Study Guide*. The video presents selected aspects of the orientation, laboratory simulation, and adult and child patient care situations. The video is accompanied by an interactive workbook, which offers study strategies, critical-thinking exercises, and suggestions on preparing for the CPNE®. In addition, it also provides written exercises using diagnosis and critical thinking.

CPNE® Skills Kit and Guided Learning Booklet

The basic skill bag includes dressing, intravenous, and medication supplies that will allow the student to simulate many aspects of patient care. The enhanced skill bag includes a double teaching stethoscope and/or a wound like those used during the CPNE®. Either bag includes the guided learning booklet, *Nursing Clinical Skills: A Thinking Approach*. This has multiple learning strategies, two case studies, and several critical thinking exercises that will assist the student in preparation for the CPNE®.

CPNE® Flash Cards or Audio CD Flash Cards

These flash cards or audio CD flash cards present each area of care with the required critical elements in a compact, easy-to-read or easy-to-listen format. In addition, the flash cards/CD contain helpful study strategies and sample documentation related to that area of care. These 5 × 8 inch cards are compact enough to be used for practice in the clinical area, but large enough for the addition of notes. Cards are hole punched and come with a ring for easy assembly. The CD is designed to provide easy navigation (forward and reverse) from critical element to critical element.



Various CPNE® resources available to students.

Bachelor's Degree Program in Nursing

Bachelor of Science in Nursing

Beliefs About the Practice of Bachelor's Degree Nursing

The faculty believes that bachelor's degree nursing practice requires an intellectual focus, the application of nursing theory, an extensive knowledge base, and the use of a scientific mode of inquiry. Nurses prepared at the bachelor's level use a distinct body of knowledge as well as intellectual and practice skills to provide culturally appropriate care to clients across the life span and at various points on the health-illness continuum. They are educated to deliver patient-centered care as a member of an interprofessional team emphasizing evidence-based practice, quality improvement approaches, and prevention. Nursing practice is built on nursing knowledge, theory, and research, and the nurse applies and adapts knowledge from other fields and professions as appropriate.

The program framework is based on the *Essentials of Baccalaureate Education for Professional Nursing Practice* (AACN, 2008), which identifies curricula elements and expected outcomes and provides the educational framework for the preparation of professional nurses. Achievement of these outcomes enables graduates to practice in an ever-changing and complex health care environment. The document emphasizes content and concepts such as patient-centered care, clinical reasoning/critical thinking, cultural sensitivity, professionalism, and genetics. It also provides a solid base in liberal education so students can apply learning to complex problems and challenges.

Purpose of the Bachelor of Science in Nursing Program

The purpose of the nursing program is to build upon prior knowledge with new learning. Using both a teaching and outcomes assessment model, the program provides a flexible means for registered nurses to obtain their bachelor's degree. The program offers access to education for students of all backgrounds, including diverse and underserved populations. The curriculum serves as a foundation for graduate study and the pursuit of lifelong learning, which is essential for practice in the profession.

Educational Outcomes

1. Uses a holistic approach to design care with clients experiencing variable and complex health care needs.
2. Integrates multiple communication strategies to establish relationships with clients* and health care team members for the provision of safe, quality care.
3. Evaluates data to inform decision making in response to complex situations.
4. Applies evidence from varied sources to impact quality client outcomes.
5. Applies leadership concepts and principles to deliver accessible, cost-effective, safe, quality care in a variety of settings for diverse populations.
6. Articulates responsibilities and contributions of professional nursing to health care.

* client(s): individual, family, aggregate, and community.



Your Personalized MyExcelsior Account:

www.excelsior.edu/MyExcelsior

Admissions:

toll free 888-647-2388, ext. 27

Fee Schedules, Financial Aid, and Scholarships:

www.excelsior.edu/fees

www.excelsior.edu/financialaid

www.excelsior.edu/scholarships

College Publications, Applications, and Forms:

www.excelsior.edu/publications

Student Policy Handbook:

www.excelsior.edu/studentpolicyhandbook

Course and Exam Information and Registration:

www.excelsior.edu/courses

www.excelsior.edu/exams

www.UExcelTest.com

Learning Resources:

www.excelsior.edu/myexcelsior, click on the Resources tab

Excelsior College Community Resources:

www.excelsior.edu/myexcelsior, click on the Communities tab



Bachelor of Science in Nursing for Registered Nurses

BS
121 Total Degree
Credits Required

GENERAL EDUCATION COMPONENT		Credit Hours
Information Literacy ^{②⑥}		1
English Composition (introductory level) ^②		3
Expository Writing Core ^{①②}		3
Total Written English Requirement		6
Humanities		9
Ethics Core (upper level) ^②		3
Total Humanities		12
Social Sciences/History		9
Psychology Core Requirement		3
Sociology Core Requirement		3
Total Social Sciences		15
Natural Sciences/Mathematics		3
Human Anatomy and Physiology Core ^③		4
Microbiology Core		3
Sciences Supportive of Nursing Core		2
Statistics Core ^④		3
Total Natural Sciences		15
Arts & Sciences Electives		12
Total General Education Component		61
NOTE: Requirements listed with an "x" in the prefix indicate examinations; requirements listed without an "x" in the prefix indicate courses.		
NURSING COMPONENT		Credit Hours
30 semester hours of nursing credit granted for prior learning validated by nursing education and successful completion of the NCLEX-RN®.		30
PHASE I		
NUR 436 Professional Transitions		3
NUR 438 Nursing Informatics		2
NUR 442 Health Assessment and Promotion in Nursing Practice		4
Nursing Elective Credits (upper level) ^⑦		3
PHASE II		
NURx430 Research in Nursing (exam) — OR —		3
NUR 430 Research in Nursing (course)		
NUR 446 Teaching and Learning in a Diverse Society		3
NUR 422 Nursing Leadership and Management		4
NURx448 Community-Focused Nursing (exam) — OR —		4
NUR 448 Community Health Nursing (course)		
PHASE III		
NUR 462 Nursing Capstone ^⑤		4
Total Nursing Component		60

- ① Three credits must be at the intermediate or advanced level.
- ② Written English requirement, information literacy, and ethics (upper level) must be completed prior to beginning the nursing component.
- ③ The Human Anatomy and Physiology requirement can also be met by **Anatomy** (2 credits) and **Physiology** (2 credits).
- ④ Statistics is a prerequisite for the **Research in Nursing** course and examination requirements.

- ⑤ Students must complete all other nursing component requirements and be within 6 credits of completing general education requirement.
- ⑥ This requirement must be completed within the first 13 Excelsior College credits attempted.
- ⑦ Nursing Electives Credits are not required for students who graduated from an Excelsior College associate degree in nursing program.

Bachelor of Science in Nursing Degree Requirements



The Bachelor of Science in nursing requires a total of **121** credits including **61** in general education and **60** in nursing.

You are subject to the degree requirements in effect at the time of your enrollment or program/degree transfer (program transfer refers to change from one school to another; degree transfer refers to changing degrees within the same school).

The faculty reserves the right to make changes in curricular requirements as necessary to reflect current professional practice. Changes may affect both enrolled and prospective students. It is your responsibility to keep informed of such changes. We make every effort to inform you of changes

as they occur. Current information about degree requirements is posted on our website. Information about changes to degree requirements is also made available on our [website](#).

General Education Component

61 credits

Because it contributes both knowledge and an intellectual approach to

problem solving, the general education component is an essential part of preparation for professional nursing practice. The general education requirements ensure that the student will develop college-level competence in the arts and sciences areas of the humanities, social sciences/ history, and natural sciences/math.

General education credits may be earned through Excelsior College courses, UExcel® examinations, or transferred from accredited, degree-granting institutions or approved examination programs for which official transcripts are provided.

It is recommended that enrolled students seek formal course approval from their advisor prior to registering for courses or examinations. Enrolled students can log on to their customized [MyExcelsior](#) page, which provides options for meeting remaining requirements. Excelsior College academic advisors work with enrolled students to create study plans that best suit their learning styles, time frames, and budgets.

If you plan to enter a master's degree program, consider taking courses that support your area of interest. You should contact the graduate school that you wish to attend to request information about policies and requirements.

Please request course approvals well in advance of registration deadlines to avoid delays. To obtain course approval, contact an academic advisor via the Message Center or by phone and provide the name of the institution, the course title and catalog number, the academic department under which the course is offered, and the catalog content description. In some circumstances a course syllabus/outline may be requested. When requesting course approval include your full name and student identification number.

General education courses taken within a nursing department or listed as "for nurses" are subject to classification review. Such courses often appear on transcripts as "Anatomy and Physiology for Nurses," "Nursing Chemistry," or "NURS: Pathophysiology."

Requirements listed with an "x" in the prefix indicate examinations; requirements listed without an "x" in the prefix indicate courses.

Requirements

1. Information Literacy

Students are expected to demonstrate competency in information literacy. Please see Information Literacy on [page 7](#) for more information. The information literacy requirement must be completed within the first 13 Excelsior College credits attempted.

The Excelsior College **INL 102 Information Literacy** online course meets this requirement.

Register at www.excelsior.edu/courses.

2. Written English Requirement

Six credits are required in English composition, of which three credits must be taken in expository writing at the intermediate or upper level.

How to satisfy expository writing core requirement at the intermediate or advanced level:

Course suggestion:

ENG 201 Writing for the Professions

Please note that three credits in freshman-level English composition must be completed before students can receive approval for the intermediate-level course above.

3. Humanities Requirements

The humanities requirements are designed to help you learn to read critically, reason well, think logically and critically, and express aesthetic appreciation. You are encouraged to study at least two disciplines in this area.

A minimum of 9 credits must be earned in subjects such as art (appreciation, history, or studio), literature, music, philosophy, religion, theater, speech, and foreign languages.

A minimum of 3 credits must be earned in a course in ethics at the upper level. The ethics core requirement must be a general course in ethics that covers foundational theories, concepts, and selected issues related to ethical choices. Courses in business, management, or religious studies cannot be applied to this requirement.

How to satisfy the upper-level ethics core requirement:

Course and examination suggestions: **PHL 312 Ethics of Health Care** or **PHLx310 Ethics Theory & Practice** or **HUMx310 Bioethics: Philosophical Issues**

4. Social Sciences/History Distribution and Core Requirements

The social sciences/history distribution is designed to provide you with a better understanding of people and society and the processes that individuals use to order their world. You are encouraged to consider a course on the family or family dynamics to meet this requirement. An understanding of economics and violence is extremely useful in current health care environments. Studies in Western and other cultures are encouraged.

At least 15 credits must be earned in subjects such as history, geography, gerontology, economics, anthropology, political science, organizational behavior, sociology, and psychology.

Within the social sciences/history distribution students are required to complete one course/exam in psychology and one course/exam in sociology. The following UExcel® exams meet the psychology core and sociology core requirements:

PSYx210 Life Span Developmental Psychology

SOCx310 Foundations of Gerontology

5. Natural Science/Mathematics Distribution and Core Requirements

The natural sciences/mathematics distribution is designed to help you develop a scientific mode of reasoning and an understanding of theory development and evaluation.

At least 15 credits must be earned in such subjects as biology, mathematics, statistics, chemistry, genetics, pathophysiology, and physics.

Within the natural sciences/mathematics distribution, students are required to complete 8 credits of natural sciences supportive of nursing that will include human anatomy and physiology

and microbiology. Students who do not have a total of 8 credits in the core requirements of anatomy and physiology and/or microbiology will need an additional 2 credits of natural sciences supportive of nursing that may be either in biology, chemistry, genetics, pathophysiology, or physics. Survey courses are not acceptable.

Students are also required to complete a course or exam in statistics. The statistics course must include both descriptive and inferential statistical measures. The statistics requirement is a prerequisite for the **Research in Nursing** course and examination.

How to satisfy the statistics core requirement:
Descriptive and Inferential Course and examination suggestions:

MAT 215 Statistics for Health Care Professionals

MAT 201 Statistics

MATx210 Statistics

6. Arts and Sciences Electives

The remaining 12 arts and sciences credits may be distributed among the humanities, social sciences/history, and natural sciences/mathematics. Students are encouraged to study in a specific area or discipline that may be a personal or professional interest. Credits in free electives (applied/professional subject areas) are not applicable.

Meeting Specific Requirements

The following requirements must be completed with a grade of “C” or higher. Courses less than 2 semester credits will not apply to meet these specific requirements.

- | | |
|-----------------------------|--|
| ■ College-level Mathematics | ■ Microbiology |
| ■ Ethics | ■ Psychology |
| ■ Human Anatomy | ■ Sociology |
| ■ Human Physiology | ■ Statistics |
| | ■ English Composition and Expository Writing |

Nursing Component

The nursing component focuses on knowledge and professional competencies expected of graduates of bachelor’s programs. Emphasis is placed on integration of nursing and related arts and sciences knowledge in a variety of complex situations related to nursing care of individuals, families, aggregates, and communities. All written English, information literacy, and ethics requirements must be completed prior to beginning the nursing component. Nursing component requirements are divided into three recommended phases. Please see the following pages for the recommended sequence in which to take these requirements. It is recommended that you complete Phase I requirements before Phase II requirements.

All requirements in Phases I and II, and all but 6 credits in general education must be complete before you will be eligible to register for the **Nursing Capstone** course.

Phase I

NUR 436 Professional Transitions 3 credits

Prerequisites: Active RN license, Written English, Information Literacy, and Ethics requirements

This course explores the evolution of contemporary nursing in the context of history, theory, knowledge, and reasoning while enhancing one’s role as a member of the profession. Emphasis is placed on the roles of the bachelor’s-prepared professional nurse, the processes guiding nursing practice, lifelong learning, and nursing in the changing health care environment and world.

Delivery: Online course delivered over 8 weeks.

NUR 438 Nursing Informatics 2 credits

Prerequisites: Active RN license, Written English, Information Literacy, and Ethics requirements

This course provides knowledge about the roles and skills in information management and the application of technology to inform nursing practice. Emphasis is placed on technological supports for

patient care interventions and the use of decision-support systems to gather evidence to guide practice. The use and understanding of standardized terminologies and the role of information technology in improving patient outcomes and creating a safe environment will be included.

Delivery: Online course delivered over 8 weeks.

NUR 442 Health Assessment and Promotion in Nursing Practice 4 credits

Prerequisites: Active RN license, Written English, Information Literacy, and Ethics requirements

This course focuses on a holistic approach to health assessment and health promotion across the life span. The development of clinical judgment and the application of communication and assessment skills in the professional nursing role are achieved through the integration of advanced knowledge, concepts, theories, and practice.

Delivery: Online course delivered over 15 weeks.

Nursing Electives 3 credits

Prerequisites: Active RN license, Written English, Information Literacy, and Ethics requirements

In addition to the nursing requirements, 3 credits of nursing elective credit at the bachelor's level are necessary to meet the 60 credits of the nursing component. Consultation with your academic advisor is required before taking a course or examination for nursing elective credit in order to be sure that you are choosing an option that is applicable toward your degree. A list of professional nursing certifications that may be used to fulfill the nursing elective requirement is on [page 37](#).

Nursing Elective credits are **not** required for students who graduated from an Excelsior College associate degree in nursing program.

Phase II

NURx430 Research in Nursing (exam) 3 credits

Prerequisites: Active RN license, Written English, Information Literacy, Ethics, and Statistics requirements

The examination measures knowledge and skill acquisition related to the research process. Evidence-based practice, critical thinking, critical reading, and the nurse's role in the application of research to practice are emphasized. The content covered in the examination consists of the foundations of research, the research process, quantitative and qualitative research, and evaluation of a research study. Knowledge and understanding of statistics is required.

Delivery: Computer-based, multiple-choice theory and extended response theory examination.

— **OR** —

NUR 430 Research in Nursing (course) 3 credits

Prerequisites: Active RN license, Written English, Information Literacy, Ethics, and Statistics requirements

This course focuses on knowledge and skill acquisition related to research process. Evidence-based practice, critical thinking, critical reading, and the baccalaureate nurse's role in the application of research to practice are emphasized. Course content examines the foundations of research, the research process, quantitative and qualitative research designs, as well as evaluation of a quantitative research study.

Delivery: Online course delivered over 8 weeks.

NUR 446 Teaching and Learning in a Diverse Society 3 credits

Prerequisites: Active RN license, Written English, Information Literacy, and Ethics requirements

This course focuses on the role of the nurse as educator and the ability to teach a group of adult clients with a shared learning need. Theory and

research-based evidence from nursing and other disciplines are integrated with concepts of caring and cultural competence, health promotion, behavioral change, and principles of teaching and learning. Application of the education process is emphasized. In partnership with clients, the student develops, implements, and evaluates a teaching plan designed to produce a desired change in behavior.

Delivery: Online course delivered over 8 weeks.

NUR 422 Nursing Leadership and Management

4 credits

Prerequisites: Active RN license, Written English, Information Literacy, and Ethics requirements

The course measures the ability to apply specific leadership and management concepts and communication and evidence-based strategies within health care organizations. Concepts covered include organizational and systems leadership, team collaboration, quality improvement, and safety and fiscal management. Emphasis is on the role of the registered nurse as a leader and manager in health care settings.

Delivery: Online course delivered over 15 weeks.

NURx448 Community-Focused Nursing (exam)

4 credits

Prerequisites: Active RN license, Written English, Information Literacy, and Ethics requirements

The Community-Focused Nursing examination prepares the registered nurse for transition to bachelor's-level practice. The concept of client is expanded to include families, aggregates, and communities within the context of a complex and dynamic environment. Principles of epidemiology, demography, environmental sciences, and political organizations are integrated with nursing concepts and principles to provide a basis for community nursing practice. Analysis and application of selected theories and health promotion/protection and disease prevention strategies are explored. The examination focuses on the synthesis of population-

based health and public health concepts to promote, maintain, and restore health of families, aggregates, and communities. Knowledge from practice and readings is used to operationalize the core concepts of critical thinking, communication, research, role development, caring, and cultural competency.

Delivery: Computer-based, multiple-choice theory examination.

— OR —

NUR 448 Community Health Nursing (course)

4 credits

Prerequisites: Active RN license, Written English, Information Literacy, and Ethics requirements

This course focuses on the concepts, models, and theories of community health nursing. The diverse roles of the baccalaureate nurse within the community are emphasized. Health promotion and disease prevention strategies are explored. Current trends and issues that influence community health nursing are evaluated. The concept of client is expanded to include family, aggregate, and community.

Delivery: Online course delivered over 15 weeks.

Phase III

NUR 462 Nursing Capstone

4 credits

Prerequisites: All nursing component requirements must be completed prior to the capstone; students must have an active RN license, and be within 6 credits of completing the general education component.

This capstone course focuses on integration and synthesis of knowledge, skills, and competencies from nursing, other disciplines, and the arts and sciences. Application of specific concepts and theories, such as communication, critical thinking and leadership, enables students to transform theory to practice within health care systems.

Delivery: Online course delivered over 15 weeks.

Certifications Approved for Elective Credit

The following are examples of nursing certifications that may be acceptable for nursing elective credits. Please check our website for the current list of certifications approved for elective credit.

■ AACN Certification Corporation (CCRN)

Certification for Adult Critical Care Nurses
4 credits

Certification for Neonatal Critical Care Nurse
4 credits

Certification for Pediatric Critical Care Nurses
4 credits

Two additional nursing elective credits will be awarded to students for each additional CCRN certification (adult, pediatric, neonatal). That is, the student will be awarded 4 credits for the first certification and 2 credits for each subsequent certification.

Certification for Progressive Care Nurses (PCCN)
3 credits

■ American Board of Perianesthesia Nursing Certification Inc. (ABPANC)

Certified Post Anesthesia Nurse (CPAN)
4 credits

Certified Ambulatory Perianesthesia Nurse (CAPA)
4 credits

Five nursing elective credits will be awarded to students holding both CPAN and CAPA.

■ American Nurses Credentialing Center

Certified Gerontological (ADN) Nurse 3 credits
Psychiatric and Mental Health Generalist
3 credits

■ Board of Certification for Emergency Nurses

Certified Emergency Nurse (CEN)
3 credits

■ Competency and Credentialing Institute

Certified Perioperative Nurse (CNOR)
3 credits

■ Medical-Surgical Nursing Certification Board

Certified Medical-Surgical
Registered Nurse (CMSN)
4 credits

■ National Board for Certification of Hospice and Palliative Nurses

Certified Hospice and Palliative Nurse (CHPN)
3 credits

■ Pediatric Nursing Certification Board

Certification in Pediatric Nursing (CPN)
3 credits

■ Wound, Ostomy, and Continence Nurse Certification Board

Certified Wound Care Nurse (CWCN)
3 credits

Certified Ostomy Care Nurse (COCN)
3 credits

Certified Continence Care Nurse (CCCN)
3 credits

Policies Specific to the Bachelor of Science in Nursing

The Excelsior College *Student Policy Handbook* is your resource for understanding the academic and administrative policies that are important to your academic success. It includes a wide range of information from important federal policies, including your right to privacy, to grading policies and policies and procedures concerning refunds, withdrawals, and other administrative issues. It is your responsibility to be familiar with these policies.

Policies and procedures that apply specifically to the bachelor's degree in nursing are listed on the following pages. File your *Handbook* with your other important academic papers and this program catalog for easy reference.

Admission

Registered Nurses

Excelsior College offers a bachelor's in nursing degree program for registered nurses. The program is designed for registered nurses who have successfully completed the NCLEX-RN®, have had their learning validated by prior education, and have a current license to practice as a registered nurse in the United States.

International Student Admission Requirements

For the bachelor's program, in addition to official transcripts, nursing candidates must demonstrate that they have an equivalent U.S. Registered Nurse (RN) licensure. To be eligible for admission, the applicant must be a graduate from an approved school of nursing in their country of education and hold a current, unencumbered nursing license (if licensed in multiple jurisdictions and/or countries, all licenses must be unencumbered). All nursing school transcripts and all licenses will be validated by primary source verification. International candidates must apply to the Commission on Graduate of Foreign Nursing Schools (CGFNS) New York Credential Verification Service (NYCVS) and the New York State Education Department (NYSED) to have their foreign nursing education evaluated and approved by the aforementioned organizations.

Detailed application information and instructions can be found in the application for admission. Submit email questions concerning international student admission requirements to international@excelsior.edu.

English Language Proficiency Requirement

International candidates from non-English speaking countries must show evidence of sufficient English language proficiency through one of the following options:

1. Submission of TOEFL (Test of English as a Foreign Language) or IELTS (International English Language Testing System) taken within the last two years.
2. Successful completion of UExcel® ENGx111 English Composition exam or UExcel® ENGx110 College Writing exam.
3. Submission of evidence of the successful completion of at least 9 credit hours of academic work in courses delivered in English at an institution of higher education in the United States.

Time Limit

The Bachelor of Science in nursing program is designed to be completed at your own pace, but must be completed within a **seven-year period** of enrollment. This time limit on enrollment is cumulative if enrollment is not continuous. **Those who do not complete the program within this time frame may be subject to dismissal.**

General Education Component

Except for the information literacy requirement, there is no time limit on general education examinations or courses submitted for transfer credit. Credits earned at accredited degree-granting institutions or through approved examination programs, and for which official transcripts are available, will be considered for transfer regardless of when they were completed.

Mathematics Policy

No more than three courses in the semester-hour system (four courses in the quarter-hour system) of college-level mathematics below the level of calculus can be applied toward degree requirements. Credit from courses listed as developmental or remedial cannot be applied toward degree requirements.

Admissions:

toll free 888-647-2388, ext. 27

College Publications, Applications, and Forms:

www.excelsior.edu/publications

Course and Exam Information and Registration:

www.excelsior.edu/courses

www.excelsior.edu/exams

www.UExcelTest.com

Learning Resources:

www.excelsior.edu/myexcelsior, click on the Resources tab

Excelsior College Community Resources:

www.excelsior.edu/myexcelsior, click on the Communities tab

Minimum Academic Average

Grades of D are not acceptable in transfer. Grades of D and F awarded in any Excelsior College course or examination are included on the official transcript and the My Academic Plan. These grades will be calculated in the GPA. A cumulative average of C (2.0) or better is required to graduate. Although grades of D may be acceptable in the general education component (except where otherwise specified), students must have the necessary grades to achieve a C average.

Policy on Repeating Nursing Computer-Delivered Examinations and Nursing Courses

Students may take each nursing theory examination a maximum of four times and no more than three times in one year. Failure on the examination at the fourth administration will lead to academic dismissal from the nursing program; failure of an online course upon the third administration will lead to academic dismissal. Non-matriculated students who fail an examination at the fourth administration will be denied admission to Excelsior College nursing programs. Students may repeat an examination 60 days after the first failure and 120 days after the second and subsequent failures.

Students may take each nursing course a maximum of three times. Failure on the third attempt will lead to dismissal from the nursing program.

Waiver of Excelsior College® Nursing Bachelor's Theory Examinations or Courses

Under certain conditions, credits from previously completed bachelor's-level nursing courses may be submitted for the purpose of transfer or to request a waiver of an Excelsior College nursing theory examination or course. Any requirement approved for waiver will be designated as a "pass" or "P" grade. Nursing courses from hospital diploma programs both in the United States and abroad are not eligible for transfer credit. Bachelor's course work credit submitted for faculty review as a request for waiver must:

- be from a regionally accredited degree-granting institution of higher education.
- have been completed no more than five years prior to the date of enrollment in the Excelsior College bachelor's nursing program.
- cover content equivalent to that of the examination/course for which the waiver is sought.
- carry a grade of C or better.
- be submitted for faculty review before the theory examination/course in that content area is taken.

Should your enrollment lapse and you reenroll, you will lose any nursing credits earned more than five years prior to enrollment. If you have waived any of the nursing theory examinations or requirements during a previous enrollment, you will not automatically receive waiver of those same examinations/requirements when reenrolling. Upon reenrollment, Excelsior College nursing faculty will review the courses again to determine applicability toward current degree requirements. Any requirement approved for waiver will be designated as a "pass" or "P" grade.

You may **not** request a waiver of a specific examination or course if you have failed the Excelsior College examination in that content area after completing the course. Students must complete the Nursing Capstone requirement through Excelsior College.



Excelsior College® Examinations

Two examinations in the bachelor's program are administered via computer.

- Community-Focused Nursing
- Research in Nursing

These examinations are available on an appointment basis at Pearson VUE Testing Centers throughout the United States and Canada as well as in other selected locations. Examination content guides, applications, and information about Pearson Testing Center locations and examination fees are available on our [website](#).

You may also contact our Test Administration Office with questions at:

Test Administration Office
7 Columbia Circle
Albany, NY 12203-5159

518-464-8500 or call toll free:
888-72EXAMS (888-723-9267)

Learning Resources for Bachelor's Degree in Nursing Students

The primary resource for each nursing theory examination requirement is the content guide and required resources, including textbooks and journal articles. Each content guide identifies required textbooks to be used for learning the content of the particular requirement as well as supplemental resources. Other learning and examination resources can be found in the Excelsior College Library and in FAQs on our website.

To help you achieve your educational goals, the School of Nursing offers a variety of guided learning opportunities to you as an enrolled student.

As an enrolled student, you will have access to:

- academic advisors to assist you with program planning,
- administrative staff for questions related to online courses, and
- members of the nursing faculty to answer questions about courses and examinations.

IMPORTANT:

Throughout this catalog the term “credits” is used to indicate semester hours.

Quarter hours are converted to semester hours by multiplying quarter-hour values by two-thirds.

Graduate Degree Programs in Nursing

Beliefs About Master's Degree Nursing Practice

The faculty believes that master's-prepared nurses in the specialties of clinical systems management, nursing education, and nursing informatics use knowledge from nursing and other professions to influence health policy, research, and professional practice in a variety of academic and service settings. They become leaders in creating collaborative environments that advance and promote professional practice and in implementing safe, quality care in a variety of settings and roles that influences health care outcomes for individuals, populations, or systems.

The program framework is based on the curricular elements and expected outcomes identified by the American Association of Colleges of Nursing in its *Essentials of Masters Education in Nursing* document (AACN, 2011). The program builds upon and extends students' existing knowledge and competencies gained from professional experiences and prior coursework. It emphasizes, as stated in the AACN Essentials document, that the master's-prepared nurse will **“lead change for quality care outcomes; advance a culture of excellence through lifelong learning; build and lead interprofessional care teams; navigate and integrate care services across the health care system; design innovative nursing practices; and translate evidence into practice”** (p. 31). A foundation of core courses prepares students with a theoretical base and process prior to study in their selected specialty area. Content and concepts such as leadership and organizational skills, quality improvement, patient safety, health policy, global perspectives, communication, advocacy, interprofessional practice, and innovative technologies expand students' knowledge base and enrich their skills.

Purpose of the Graduate Program in Nursing

The purpose of the master's in nursing program is to prepare registered nurses for successful careers in a variety of academic and service settings as leaders and administrators in health care systems, nurse educators, and nurse informaticists. The program educates students for advanced practice roles by creating an academic environment that fosters scholarship, critical thinking, and creativity. Using an instructional model through online courses and assessments and a rigorous, challenging curriculum, the program provides a flexible means for registered nurses, including those from diverse and underserved populations, to obtain a master's degree. The program emphasizes pursuit of lifelong learning and professional development and serves as a strong foundation for doctoral study.

Educational Outcomes

1. Integrates nursing's scope of practice, professional standards, and specialty knowledge to implement the role of the master's-prepared nurse across healthcare settings.
2. Applies concepts and theoretical frameworks to guide thinking, improve performance, analyze policy, and allocate resources.
3. Establishes collaborative partnerships with diverse constituencies and interprofessional teams to address needs and influence change.
4. Translates research evidence to promote safe, cost-effective, quality practice.
5. Develops approaches to the delivery of healthcare that address the ethical, legal, cultural, social, and policy needs of diverse stakeholders and populations.
6. Designs strategies using information technology to inform decisions and improve outcomes.
7. Uses effective communication strategies with multiple stakeholders to achieve desired outcomes.
8. Integrates principles and concepts of leadership in professional practice environments.

Specialization in Nursing Leadership and Administration of Health Care Systems

The Master of Science in nursing with a specialization in Nursing Leadership and Administration of Health Care Systems consists of 37 required credits. The curriculum is organized into three components: the graduate nursing core courses, the health care informatics courses, the clinical systems management courses, and the Capstone Experience. Students are introduced to the master's curriculum by taking courses within the nursing core and/or informatics component. The nursing core and informatics courses can be taken concurrently or interchangeably.

The graduate nursing core contains content that is foundational to the development of specialty knowledge. Courses within the core cover content areas such as health care economics, role of theory in practice, policy development and implementation, research process, and human diversity. The graduate nursing core consists of five courses: **Theoretical Foundations of Nursing Practice; Professional Role Development; Research and Evidence-Based Practice; Health Care Delivery Systems: Political, Social, and Economic Influences; and Community Nursing: Human Diversity and Public Health.** The health care informatics component focuses on content that is supportive of the role of the clinical systems manager, such as information management systems for health care and the ethical, political, social, and legal implications of information systems management in the health care arena. The informatics component consists of two courses: **Management Information for Decision Support and Issues in Health Care Informatics.** Students successfully complete all the nursing core and informatics courses prior to beginning the clinical systems management courses.

The Nursing Leadership and Administration of Health Care Systems component of the curriculum focuses specifically on the knowledge and skills required to implement a leadership role in clinical systems. Content covering areas such as

finance, workforce management, leadership role, organizational culture and change, and strategic initiatives are included in the three courses that make up the clinical systems management component. This component consists of the following courses: **Management of Clinical Systems**, **Management of Fiscal and Operational Systems**, and **Leadership of the Organizational System**.

The 5-credit **Capstone Experience** begins after the successful completion of 32 credits. The Capstone Experience has three components: an administrative project, an online seminar, and a leadership retreat. This experience focuses on knowledge synthesis and role development. At the completion of this curriculum, students are prepared to function in the role of leader or manager across organizational systems.

Specialization in Nursing Education

The Master of Science in nursing with a specialization in Nursing Education consists of 38 required credits. The curriculum is organized into three components: the graduate nursing core courses, the specialty courses, and the Nursing Education Capstone. Students also must complete one 3-credit graduate elective in an area of interest that complements their area of specialization and is pre-approved by the faculty.

The nursing core contains content that is foundational to the development of specialty knowledge. Courses within the core cover content areas such as health care economics, role of theory in practice, policy development and implementation, research process, and human diversity. The nursing core consists of five courses: **Theoretical Foundations of Nursing Practice**; **Professional Role Development**; **Research and Evidence-Based Practice**; **Health Care Delivery Systems: Political, Social, and Economic Influences**; and **Community Nursing: Human Diversity and Public Health**.

The Nursing Education specialty component of the curriculum focuses on the knowledge and skills required to implement the role of nurse educator in an academic or service setting. Content covering learning theories, teaching strategies, curriculum development, evaluation of learning outcomes,

and utilization of technologies to support teaching are included in the four courses that make up the Nursing Education specialty component. This component consists of the following courses: **Designing a Student Learning Environment**; **Curriculum and Program Planning**; **Evaluation and Assessment in Nursing Education**; and **Theories and Methods of Teaching with Technologies**.

The 5-credit **Nursing Education Capstone** begins after the successful completion of 33 credits. The Nursing Education Capstone has three components: an educational project, an online seminar, and an educational leadership retreat. This experience focuses on knowledge synthesis and role development. At the completion of this curriculum, students are prepared to function in the role of nurse educator in a variety of educational settings.

Specialization in Nursing Informatics

The Master in Science in nursing with a specialization in Nursing Informatics consists of 36 required credits. The curriculum is organized into three components: the graduate nursing core courses, the specialty courses, and the Nursing Informatics Capstone. Students must also complete one 3-credit graduate elective related to the area of specialization. The nursing core contains content that is foundational to the development of specialty knowledge. Courses within the core cover content areas such as health care economics, role of theory in practice, policy development and implementation, research process, and human diversity. The nursing core consists of five courses: **Theoretical Foundations of Nursing Practice**; **Professional Role Development**; **Research and Evidence-Based Practice**; **Health Care Delivery Systems: Political, Social, and Economic Influences**; and **Community Nursing: Human Diversity and Public Health**.

The nursing informatics specialty component of the curriculum focuses on the knowledge and skills required to implement the role of nurse informaticist in a variety of health care settings. Content covering how data and information can be used to create knowledge, concepts of database management in responding to a health care problem, assessment of information requirements of a

system as it relates to client care and organizational operations, and selection and application of a decision-making model are included in the three courses that make up the nursing informatics specialty component. This component consists of the following courses: **Data, Information, and Knowledge; System Life Cycle;** and **Management Information for Decision Support.** The 5-credit **Nursing Informatics Capstone** begins after the successful completion of 32 credits. This course has three components: an informatics project management experience, an online seminar, and a leadership retreat. It is designed to provide students with the opportunity to apply knowledge and competencies required throughout the program of study to actual and simulated information technology situations in health care. At the completion of the curriculum students are prepared to function in the role of nurse informaticist in a variety of health care settings.

Policies Specific to the Master of Science in Nursing

The *Excelsior College Student Policy Handbook* is your resource for understanding the academic and administrative policies that are important to your academic success. It includes a wide range of information from important federal policies, including your right to privacy, to grading policies and policies and procedures concerning refunds, withdrawals, and other administrative issues. It is your responsibility to be familiar with these policies.

Policies and procedures that apply specifically to the master's program in nursing are listed on the following pages. File your *Handbook* with your other important academic papers and this program catalog for easy reference.

Admission

Admission to the Master of Science in nursing program is open to anyone who has earned a bachelor's degree from a regionally accredited institution and who is licensed to practice as a registered nurse.

International Student Admission Requirements

For the master's program, in addition to official transcripts, nursing candidates must demonstrate that they have an equivalent U.S. Registered Nurse (RN) licensure. To be eligible for admission, the applicant must be a graduate from an approved school of nursing in their country of education and hold a current, unencumbered nursing license (if licensed in multiple jurisdictions and/or countries, all licenses must be unencumbered). All nursing school transcripts and all licenses will be validated by primary source verification.

Detailed application information and instructions can be found in our application for admission.

English Language Proficiency Requirement

International candidates from non-English speaking countries must show evidence of sufficient English language proficiency through one of the following options:

1. Submission of TOEFL (Test of English as a Foreign Language) or IELTS (International English Language Testing System) taken within the last two years.
2. Successful completion of UExcel® ENGx111 English Composition exam or UExcel® ENGx110 College Writing exam.
3. Submission of evidence of the successful completion of at least 9 credit hours of academic work in courses delivered in English at an institution of higher education in the United States.

Time Limit

The Master of Science in nursing program is designed to be completed at your own pace, however a minimum of two courses or 6 credits per enrollment year is required. Students enrolled in the MS in nursing program are required to complete all degree requirements within a **seven-year period** of enrollment. This time limit on enrollment is cumulative if enrollment is not continuous. **Those who do not complete the program within this time may be subject to dismissal.**

Course Waiver

Up to 16 graduate-level credits from an accredited college or university may be applied toward course waiver in the MS in nursing program. Grades received must be B or better, and coursework must not be more than five years old at the time of the student's application to the program. The Nursing Informatics Capstone may not be waived. The Graduate Waiver Committee will compare content from the course the student has taken at another college to the Excelsior College course. There must be agreement with all major content areas for a waiver to be granted. In some cases, more than one prior course will be used to waive one of the MS courses. Official transcripts from the graduate school the student attended should be sent to the Excelsior College Office of Registration and Records. Students should send additional supportive descriptive materials such as syllabi or course outlines that address the content of the course the student completed.

Credit granted by an institution with candidacy status from one of the regional accrediting agencies is also applicable. Excelsior College refers to the *Accredited Institutions of Postsecondary Education* manual published for the Council for Higher Education Accreditation (CHEA) to verify the accreditation status of all postsecondary institutions.

Credit reported on a pass/fail or standard score system will not be accepted into the graduate program without written verification from the issuing institution that the course was passed with the equivalent of a B grade or better. Any course accepted for waiver will not be calculated into the GPA.

IMPORTANT:

Throughout this catalog the term “credits” is used to indicate semester hours. Quarter hours are converted to semester hours by multiplying quarter-hour values by two-thirds.

Your Personalized MyExcelsior Account:
www.excelsior.edu/MyExcelsior

Admissions:
toll free 888-647-2388, ext. 27

Fee Schedules, Financial Aid, and Scholarships:
www.excelsior.edu/fees
www.excelsior.edu/financialaid
www.excelsior.edu/scholarships

College Publications, Applications, and Forms:
www.excelsior.edu/publications

Student Policy Handbook:
www.excelsior.edu/studentpolicyhandbook

Course and Exam Information and Registration:
www.excelsior.edu/courses
www.excelsior.edu/exams
www.UExcelTest.com

Learning Resources:
www.excelsior.edu/myexcelsior, click on the Resources tab

Excelsior College Community Resources:
www.excelsior.edu/myexcelsior, click on the Communities tab



Master of Science in Nursing with a
**Specialization in Nursing Leadership and
 Administration of Health Care Systems**

MS
37 Total Degree
 Credits Required

PHASE I

GRADUATE NURSING CORE	Credit Hours
NUR 502 Theoretical Foundations of Nursing Practice	3
NUR 514 Professional Role Development	3
NUR 513 Research and Evidence-Based Practice	4
NUR 531 Health Care Delivery Systems Political, Social, and Economic Influences	4
NUR 541 Community Nursing: Human Diversity and Public Health	4
Total Graduate Nursing Core	18
HEALTH CARE INFORMATICS COMPONENT	Credit Hours
NUR 553 Issues in Health Care Informatics	2
NUR 680 Management Information for Decision Support	3
Total Health Care Informatics Component	5
Total Phase I	23

PHASE II

NURSING LEADERSHIP AND ADMINISTRATION OF HEALTH CARE SYSTEMS COMPONENT	Credit Hours
NUR 615 Management of Clinical Systems	3
NUR 625 Management of Fiscal and Operational Systems	3
NUR 635 Leadership in Organizational Systems	3
Total Nursing Leadership and Administration of Health Care Systems Component	9
PHASE III	Credit Hours
NUR 644 Capstone Experience	5
Total Phase II and III	14

Requirements for the Specialization in Nursing Leadership and Administration of Health Care Systems

Phase I

Graduate Nursing Core: **18 credits**

NUR 502 Theoretical Foundations of Nursing Practice 3 credits

Prerequisites: None

Theoretical Foundations of Nursing Practice focuses on the exploration of nursing knowledge development to include philosophy, theories, models, and concepts that have been designed to guide client care and research initiatives and to inform nursing practice. It provides approaches to analyze and critique a variety of theories in nursing and related fields.

NUR 513 Research and Evidence-Based Practice 4 credits

Prerequisites: Undergraduate research and statistics are highly recommended.

Statistics is a prerequisite for students enrolled in the RN to MS program.

Research and Evidenced-Based Practice focuses on the research process and the analysis and evaluation of research to integrate the best evidence into practice. Emphasis is on the identification of generic and discipline-specific health care issues, synthesis of evidence, and translation of research to support and inform practice innovations.

NUR 514 Professional Role Development 3 credits

Prerequisites: None

Professional Role Development examines the theoretical foundations of professional role development for the master's-prepared nurse. The course explores current factors, strategies, and inter-professional trends to analyze selected nursing roles and develop strategies for implementation. It

highlights competencies and skills of the master's-prepared nurse in an environmental context through development of a professional portfolio.

NUR 531 Health Care Delivery Systems: Political, Social, and Economic Influences 4 credits

Prerequisites: None

Health Care Delivery Systems: Political, Social, and Economic Influences fosters understanding of the impact of health care policy, organizational design, and health care finance on the delivery of health care services. It reviews basic economic theory, historical and social trends, and events pivotal in the development of health care delivery as it relates to the master's-prepared nurse.

NUR 541 Community Nursing: Human Diversity and Public Health 4 credits

Prerequisites: None

Community Nursing: Human Diversity and Public Health focuses on identifying and responding to health-related concerns of diverse populations. The course explores the social, epidemiological, environmental, economic, cultural, and political influences on various communities' and populations' responses to health care and related challenges. It emphasizes building awareness and understanding of nursing's involvement in the ecology of health and designs strategies to promote health within the community, reduce health disparities, and prevent illness, disease, and injuries.

Health Care Informatics Component: **5 credits**

NUR 553 Issues in Health Care Informatics 2 Credits

Prerequisites: None

Issues in Health Care Informatics encourages students to engage in a dialogue among themselves and with experts in the field of health care and health care informatics in order to understand current issues. Using a single broad case study, students view the issues engendered by the case through the different lenses of ethics, politics, society, and the law.

**NUR 680 Management Information
for Decision Support** 3 credits

Prerequisites: All nursing core courses

This course focuses on the identification, acquisition, analysis, interpretation, and application of data, databases and decision-making strategies for health care. It emphasizes decision support systems concepts; methodologies and technologies; and includes content on model management, knowledge management, and strategies to consider when selecting decision support systems

Phase II

**Nursing Leadership and Administration
of Health Care Systems Component: 9 credits**

The clinical systems management component consists of three online courses totaling 9 credits. The courses that make up this component require synthesis of knowledge and application from the nursing core courses and the informatics courses. Therefore students should complete all of the Phase I courses before beginning the clinical systems management courses.

**NUR 615 Management of
Clinical Systems** 3 Credits

Prerequisites: All nursing core and informatics courses

Management of Clinical Systems focuses on the application of management principles, processes, techniques, and tools to shape a supportive environment of care and promote continuous improvement in clinical care systems.

IMPORTANT:

Throughout this catalog the term “credits” is used to indicate semester hours. Quarter hours are converted to semester hours by multiplying quarter-hour values by two-thirds.

**NUR 625 Management of Fiscal
and Operational Systems** 3 Credits

Prerequisites: All nursing core and informatics courses

Management of Fiscal and Operational Systems focuses on the application of management principles to design cost-effective clinical systems and achieve optimal resource use across the health care enterprise.

**NUR 635 Leadership in
Organizational Systems** 3 Credits

Prerequisites: All nursing core and informatics courses

Leadership in Organizational Systems focuses on critical examination of leadership styles, strategies, and competencies of the nurse executive in order to successfully manage the health care enterprise. It emphasizes leadership skills for strategic planning, enhancing team performance and interdisciplinary collaboration, and creating a culture of quality performance.

Phase III

Capstone Experience: 5 credits

NUR 644 Capstone Experience 5 credits

Prerequisites: All Phase I and Phase II courses

The Capstone Experience is a 5-credit requirement consisting of three integrated components: administrative project, online seminar (15-week course), and leadership retreat. This culminating experience of the graduate nursing program is designed to provide students with an opportunity to apply knowledge and skills acquired throughout the program of study to actual and simulated leadership situations. Performance assessment of the students’ attainment of program competencies is built into the three components.

Students must consult with academic advisors regarding the time frame required for the Capstone Experience. This requirement must be completed through Excelsior College.



Master of Science in Nursing with a Specialization in Nursing Education

MS
38 Total Degree
Credits Required

PHASE I		PHASE II	
GRADUATE NURSING CORE	Credit Hours	NURSING EDUCATION COMPONENT	Credit Hours
NUR 502 Theoretical Foundations of Nursing Practice	3	NUR 650 Designing a Student Learning Environment	3
NUR 514 Professional Role Development	3	NUR 655 Curriculum and Program Planning	3
NUR 513 Research and Evidence-Based Practice	4	NUR 660 Evaluation and Assessment in Nursing Education	3
NUR 531 Health Care Delivery Systems: Political, Social, and Economic Influences	4	NUR 665 Theories and Methods of Teaching with Technologies	3
NUR 541 Community Nursing: Human Diversity and Public Health	4	Total Nursing Education Component	12
Total Graduate Nursing Core	18	PHASE III	Credit Hours
Graduate Elective	3	NUR 670 Nursing Education Capstone	5
Total Phase I	21	Total Phase II and III	17

Requirements for the Specialization in Nursing Education

PHASE I

Graduate Nursing Core: **19 credits**

NUR 502 Theoretical Foundations of Nursing Practice 3 credits

Prerequisites: None

Theoretical Foundations of Nursing Practice focuses on the exploration of nursing knowledge development to include philosophy, theories, models, and concepts that have been designed to guide nursing practice. It provides approaches to analyze and critique a variety of theories in nursing and related fields.

NUR 513 Research and Evidence-Based Practice 4 credits

Prerequisites: Undergraduate research and statistics are highly recommended.

Statistics is a prerequisite for students enrolled in the RN to MS program.

Research and Evidence-Based Practice focuses on the research process and the analysis and evaluation of research to integrate the best evidence into practice. Emphasis is on the identification of generic and discipline-specific health care issues, synthesis of client care and research initiatives to inform evidence, and translation of research to support and inform practice innovations.

NUR 514 Professional Role Development 3 credits

Prerequisites: None

Professional Role Development examines the theoretical foundations of professional role development for the master's-prepared nurse. The course explores current factors, strategies, and inter-professional trends to analyze selected nursing roles and develop strategies for

implementation. It highlights competencies and skills of the master's-prepared nurse in an environmental context through development of a professional portfolio.

NUR 531 Health Care Delivery Systems: Political, Social, and Economic Influences 4 credits

Prerequisites: None

Health Care Delivery Systems: Political, Social, and Economic Influences fosters understanding of the impact of health care policy, organizational design, and health care finance on the delivery of health care services. It reviews basic economic theory, historical and social trends, and events pivotal in the development of health care delivery as it relates to the master's-prepared nurse.

NUR 541 Community Nursing: Human Diversity and Public Health 4 credits

Prerequisites: None

Community Nursing: Human Diversity and Public Health focuses on identifying and responding to health-related concerns of diverse populations. The course explores the social, epidemiological, environmental, economic, cultural, and political influences on various communities' and populations' responses to health care and related challenges. It emphasizes building awareness and understanding of nursing's involvement in the ecology of health and designs strategies to promote health within the community, reduce health disparities, and prevent illness, disease, and injuries.

Graduate Elective: **3 credits**

Graduate Elective 3 credits

Prerequisites: None

In order to meet the required number of program credits, 3 graduate-level elective credits must be taken. These may be completed within the graduate program or transferred from other graduate programs if they are deemed eligible for credit in the Master of Science in nursing program. Advisor approval is required when choosing an elective course.

PHASE II

Nursing Education Component: **12 credits**

The nursing education component consists of four online courses totaling 12 credits. The courses that make up this component require synthesis of knowledge and application from the nursing core courses. Therefore, students should complete all of those courses before beginning the nursing education courses.

NUR 650 Designing a Student Learning Environment 3 Credits

Prerequisites: All nursing core courses

Designing a Student Learning Environment focuses on the creation of teaching-learning environments and the integration of the role of faculty/educator, uniqueness of the student learner, the setting and context within which the learning occurs, the teaching-learning strategies used to promote nursing education, and evaluation of the effectiveness of this process.

NUR 655 Curriculum and Program Planning 3 Credits

Prerequisites: All nursing core courses

Curriculum and Program Planning focuses on curriculum and syllabus/program development including theoretical frameworks and design, philosophical foundations, and selection of learning experiences to achieve outcomes.

NUR 660 Evaluation and Assessment in Nursing Education 3 Credits

Prerequisites: All nursing core courses

Evaluation and Assessment in Nursing Education is designed to introduce the student to the evaluation process, including test construction, clinical performance assessment, program evaluation, and strategies for evaluating learning outcomes.

NUR 665 Theories and Methods of Teaching with Technologies 3 Credits

Prerequisites: All nursing core courses

Theories and Methods of Teaching with Technologies provides an opportunity to acquire knowledge and develop skills for using technologies to support the teaching-learning process, including using media, multimedia, and technology-rich and online learning environments.

PHASE III

Nursing Education Capstone: **5 credits**

NUR 670 Nursing Education Capstone 5 Credits

Prerequisites: All Phase I and Phase II courses

The Nursing Education Capstone is a 5-credit requirement consisting of three integrated components: educational/teaching experience, online seminar (15-week course), and leadership retreat. This culminating experience of the graduate nursing program is designed to provide students with an opportunity to apply knowledge and competencies acquired throughout the program of study to actual and simulated educational situations. Performance assessment of the students' attainment of program competencies is built into the three components.

Students must consult with academic advisors regarding the time frame required for completing the Capstone Experience. This requirement must be completed through Excelsior College.

IMPORTANT:

Throughout this catalog the term "credits" is used to indicate semester hours. Quarter hours are converted to semester hours by multiplying quarter-hour values by two-thirds.



Master of Science in Nursing with a Specialization in Nursing Informatics

MS
36 Total Degree
Credits Required

PHASE I

GRADUATE NURSING CORE	Credit Hours
NUR 502 Theoretical Foundations of Nursing Practice	3
NUR 514 Professional Role Development	3
NUR 513 Research and Evidence-Based Practice	4
NUR 531 Health Care Delivery Systems Political, Social, and Economic Influences	4
NUR 541 Community Nursing: Human Diversity and Public Health	4
Total Graduate Nursing Core	18
Graduate Elective	3
Total Phase I	21

PHASE II

NURSING INFORMATICS COMPONENT	Credit Hours
NUR 521 Data, Information, and Knowledge	3
NUR 551 System Life Cycle	4
NUR 680 Management Information for Decision Support	3
Total Nursing Informatics Component	10

PHASE III

	Credit Hours
NUR 685 Nursing Informatics Capstone	5
Total Phase II and III	15

Requirements for the Specialization In Nursing Informatics

PHASE I

Graduate Nursing Core: **19 credits**

NUR 502 Theoretical Foundations of Nursing Practice 3 credits

Prerequisites: None

Theoretical Foundations of Nursing Practice focuses on the exploration of nursing knowledge development to include philosophy, theories, models, and concepts that have been designed to guide client care and research initiatives and to inform nursing practice. It provides approaches to analyze and critique a variety of theories in nursing and related fields.

NUR 513 Research and Evidence-Based Practice 4 credits

Prerequisites: Undergraduate research and statistics are highly recommended.

Statistics is a prerequisite for students enrolled in the RN to MS program.

Research and Evidenced-Based Practice focuses on the research process and the analysis and evaluation of research to integrate the best evidence into practice. Emphasis is on the identification of generic and discipline-specific health care issues, synthesis of evidence, and translation of research to support and inform practice innovations.

NUR 514 Professional Role Development 3 credits

Prerequisites: None

Professional Role Development examines the theoretical foundations of professional role development for the master's-prepared nurse. The course explores current factors, strategies, and inter-professional trends to analyze selected nursing roles and develop strategies for implementation. It

highlights competencies and skills of the master's-prepared nurse in an environmental context through development of a professional portfolio.

NUR 531 Health Care Delivery Systems: Political, Social, and Economic Influences 4 credits

Prerequisites: None

Health Care Delivery Systems: Political, Social, and Economic Influences fosters understanding of the impact of health care policy, organizational design, and health care finance on the delivery of health care services. It reviews basic economic theory, historical and social trends, and events pivotal in the development of health care delivery as it relates to the master's-prepared nurse.

NUR 541 Community Nursing: Human Diversity and Public Health 4 credits

Prerequisites: None

Community Nursing: Human Diversity and Public Health focuses on identifying and responding to health-related concerns of diverse populations. The course explores the social, epidemiological, environmental, economic, cultural, and political influences on various communities' and populations' responses to health care and related challenges. It emphasizes building awareness and understanding of nursing's involvement in the ecology of health and designs strategies to promote health within the community, reduce health disparities, and prevent illness, disease, and injuries.

Graduate Elective: **3 credits**

Graduate Elective 3 credits

Prerequisites: None

In order to meet the required number of program credits, 3 graduate-level elective credits must be taken. These may be completed within the graduate program or transferred from other graduate programs if they are deemed eligible for credit in the Master of Science in nursing program. Advisor approval is required when choosing an elective course.

PHASE II

Nursing Informatics Component: **10 credits**

The nursing informatics component consists of three online courses totaling 10 credits. The courses that make up this component require synthesis of knowledge and application from the nursing core courses. Therefore, students must complete all of those courses before beginning the nursing informatics courses.

NUR 521 Data, Information, and Knowledge 3 credits

Prerequisites: All nursing core courses

The course focuses on the nature of data, the concepts of information and knowledge, and the principles of relational databases, systems operations and information systems.

NUR 551 System Life Cycle 4 credits

Prerequisites: All nursing core courses

This course focuses on a structured approach to the selection and implementation of an information system. This structured approach is called the information system development life cycle and the course incorporates the five phases of the life cycle: planning, analysis, design, implementation, and evaluation.

NUR 680 Management Information for Decision Support 3 credits

Prerequisites: All nursing core courses

This course focuses on the identification, acquisition, analysis, interpretation, and application of data, databases, and decision-making strategies for health care. It emphasizes decision support systems concepts, methodologies, and technologies, and includes content on model management, knowledge management, and strategies to consider when selecting decision support systems.

PHASE III

Nursing Informatics Capstone: **5 credits**

NUR 685 Nursing Informatics Capstone 5 credits

Prerequisites: Completion of the nursing core courses and nursing informatics specialty component

The Nursing Informatics Capstone is a 5-credit requirement consisting of three integrated components: informatics project management experience, online seminar (15-week course), and leadership retreat. This culminating experience of the graduate nursing program is designed to provide students with an opportunity to apply knowledge and skills acquired throughout the program of study to actual and simulated technology situations in health care. Performance assessment of the students' attainment of program competencies is built into the three components.

Students must consult with academic advisors regarding the time frame required for completing the Capstone Experience. This requirement must be completed through Excelsior College.

Your Personalized MyExcelsior Account:

www.excelsior.edu/MyExcelsior

Fee Schedules, Financial Aid, and Scholarships:

www.excelsior.edu/fees

www.excelsior.edu/financialaid

www.excelsior.edu/scholarships

College Publications, Applications, and Forms:

www.excelsior.edu/publications

Student Policy Handbook:

www.excelsior.edu/studentpolicyhandbook

Course and Exam Information and Registration:

www.excelsior.edu/courses

www.excelsior.edu/exams

www.UExcelTest.com

Learning Resources:

www.excelsior.edu/myexcelsior, click on the **Resources** tab

Dual Degree Program in Nursing

RN to Master of Science in Nursing

The RN to Master of Science (RN to MS) in nursing program is designed to allow registered nurses to earn a Bachelor of Science in nursing, as well as a Master of Science in nursing with a specialization in Nursing Leadership and Administration of Health Care Systems, Nursing Education, or Nursing Informatics. With this option, students take graduate-level courses that replace some of the undergraduate requirements. **Charts 6, 7, and 8 (page 58, page 59, and page 60)** offer a visual representation of the requirements for the three specializations of the RN to MS in nursing program.

Policies Specific to the RN to MS in Nursing Program

The Excelsior College *Student Policy Handbook* is your resource for understanding the academic and administrative policies that are important to your academic success. It includes a wide range of information from important federal policies, including your right to privacy, to grading policies and policies and procedures concerning refunds, withdrawals, and other administrative issues. It is your responsibility to be familiar with these policies.

Additional policies and procedures that apply specifically to the RN to MS in nursing program are listed on the following pages. File your *Student Policy Handbook* with your other important academic papers and this program catalog for easy reference.

Admission

The RN to MS in nursing program is designed for registered nurses who have learning validated by prior education, have successfully completed the NCLEX-RN®, have a current license to practice as a registered nurse in the United States, and have not earned a bachelor's degree in any field.

International Student Admission

In addition to official transcripts, nursing candidates must demonstrate that they have an equivalent U.S. Registered Nurse (RN) licensure. To be eligible for admission, the applicant must be a graduate from an approved school of nursing in their country of education and hold a current, unencumbered nursing license (if licensed in multiple jurisdictions and/or countries, all licenses must be unencumbered). All nursing school transcripts and all licenses will be validated by primary source verification.

International candidates must apply to the Commission on Graduate of Foreign Nursing Schools (CGFNS) New York Credential Verification Service (NYCVS) and the New York State Education Department (NYSED) to have their

foreign nursing education evaluated and approved by the aforementioned organizations.

Detailed application information and instructions can be found in our application for admission.

English Language Proficiency Requirement

International candidates from non-English speaking countries must show evidence of sufficient English language proficiency through one of the following options:

1. Submission of TOEFL (Test of English as a Foreign Language) or IELTS (International English Language Testing System) taken within the last two years.
2. Successful completion of the UExcel® ENGx111 English Composition exam or the UExcel® ENGx110 College Writing exam.
3. Submission of evidence of the successful completion of at least 9 credit hours of academic work in courses delivered in English at an institution of higher education in the United States.

Time Limit

The RN to MS in nursing program is designed to be completed at your own pace. Students enrolled in the RN to MS in nursing program on or after September 1, 2001, are required to complete all degree requirements within a 12-year period of enrollment. This time limit on enrollment is cumulative if enrollment is not continuous. Those who do not complete the program within this time may be subject to dismissal.

Time Limit—General Education Component

With the exception of information literacy, there is no time limit on general education courses or examinations submitted for transfer credit in this degree program. Credits earned at regionally accredited institutions or through approved examination programs and for which official transcripts are available will be evaluated regardless of when they were earned.

Time Limit—Undergraduate Nursing Component

Credit submitted from nursing examinations and nursing courses for purposes of meeting requirements for the nursing component of the degree need to have been earned within five years prior to the date of enrollment in an Excelsior College nursing program. Please see [page 39](#) for guidelines on waiver of Excelsior College nursing theory requirements.

There is no time limit on the nursing component credits as long as students remain actively enrolled in an Excelsior College nursing program. Should enrollment lapse and you reenroll, you will lose credit for any nursing examinations taken more than five years prior to reenrollment. If you have waived any of the nursing requirements during a previous enrollment, you will not automatically receive waiver of those requirements when reenrolling. The Excelsior College nursing faculty will review the courses again and you may lose the waiver, depending on the age of the course and current content requirements.

Course Load Requirement

The undergraduate portion of the RN to MS degree is self-paced. Once students reach graduate status, they must complete a minimum of two courses, or 6 credits per enrollment year, to remain enrolled in the program, unless a leave of absence has been requested in writing.

Minimum Academic Average— Graduate Courses

Graduate students are required to have a 3.0 grade point average to graduate from the program. The graduate grade point average is calculated separately from the undergraduate grade point average.

IMPORTANT:

Throughout this catalog the term “credits” is used to indicate semester hours.

Quarter hours are converted to semester hours by multiplying quarter-hour values by two-thirds.

Your Personalized MyExcelsior Account:

www.excelsior.edu/MyExcelsior

Admissions:

toll free 888-647-2388, ext. 27

Fee Schedules, Financial Aid, and Scholarships:

www.excelsior.edu/fees

www.excelsior.edu/financialaid

www.excelsior.edu/scholarships

College Publications, Applications, and Forms:

www.excelsior.edu/publications

Student Policy Handbook:

www.excelsior.edu/studentpolicyhandbook

Course and Exam Information and Registration:

www.excelsior.edu/courses

www.excelsior.edu/exams

www.UExcelTest.com

Learning Resources:

www.excelsior.edu/myexcelsior, click on the Resources tab

Excelsior College Community Resources:

www.excelsior.edu/myexcelsior, click on the Communities tab



RN to Master of Science in Nursing with a Specialization in Nursing Leadership and Administration of Health Care Systems

RN to MS
142 Total Degree
Credits Required

BACHELOR'S-LEVEL GENERAL EDUCATION COMPONENT

Information Literacy^{②⑤}

**Credit
Hours**

1

English Composition^②

3

Expository Writing Core^{①②}

3

Total Written English Requirement

6

Humanities

9

Ethics Core (upper level)^②

3

Total Humanities

12

Social Sciences/History

9

Psychology Core Requirement

3

Sociology Core Requirement

3

Total Social Sciences

15

Natural Sciences/Mathematics

3

Human Anatomy and Physiology Core^③

4

Microbiology Core

3

Sciences Supportive of Nursing Core

2

Statistics Core^④

3

Total Natural Sciences

15

Arts & Sciences Electives

12

Total General Education Component

61

BACHELOR'S-LEVEL NURSING COMPONENT

**Credit
Hours**

30 semester hours of nursing credit granted for prior learning validated by nursing education and successful completion of the NCLEX-RN®.

30

NUR 436 **Professional Transitions**

3

NUR 442 **Health Assessment and Promotion in Nursing Practice**

4

NUR 446 **Teaching and Learning in a Diverse Society**

3

NUR 422 **Nursing Leadership and Management**

4

GRADUATE NURSING CORE

**Credit
Hours**

NUR 513 **Research and Evidence-Based Practice**^④

4

NUR 531 **Health Care Delivery Systems Political, Social, and Economic Influences**

4

NUR 541 **Community Nursing: Human Diversity and Public Health**

4

Total Bachelor's-level Nursing Component

56

Once students complete the bachelor's component of the RN to MS in nursing program, they become master's degree students and are eligible to complete the remaining graduate-level courses.

MASTER'S COMPONENT

PHASE I

GRADUATE NURSING CORE

**Credit
Hours**

NUR 502 **Theoretical Foundations of Nursing Practice**

3

NUR 514 **Professional Role Development**

3

NUR 553 **Issues in Health Care Informatics**

2

NUR 680 **Management Information for Decision Support**

3

PHASE II

NURSING LEADERSHIP AND ADMINISTRATION OF HEALTH CARE SYSTEMS COMPONENT

**Credit
Hours**

NUR 615 **Management of Clinical Systems**

3

NUR 625 **Management of Fiscal and Operational Systems**

3

NUR 635 **Leadership in Organizational Systems**

3

PHASE III

NUR 644 **Capstone Experience**

5

Total Master's Component

25

① Three credits must be at the intermediate or advanced level.

② Written English requirement (including Expository Writing core), information literacy, and ethics (upper level) must be completed prior to beginning the nursing component.

③ The Human Anatomy and Physiology requirement can also be met by: Anatomy (2 credits) and Physiology (2 credits)

④ Statistics is a prerequisite for the Research and Evidence-Based Practice course.

⑤ Information literacy must be completed within the first 13 Excelsior College credits attempted.



RN to Master of Science in Nursing with a Specialization in Nursing Education

RN to MS
143 Total Degree Credits Required

BACHELOR'S-LEVEL GENERAL EDUCATION COMPONENT

Information Literacy^{②⑤}

Credit Hours

1

English Composition^②

3

Expository Writing Core^{①②}

3

Total Written English Requirement

6

Humanities

9

Ethics Core (upper level)^②

3

Total Humanities

12

Social Sciences/History

9

Psychology Core Requirement

3

Sociology Core Requirement

3

Total Social Sciences

15

Natural Sciences/Mathematics

3

Human Anatomy and Physiology Core^③

4

Microbiology Core

3

Sciences Supportive of Nursing Core

2

Statistics Core^④

3

Total Natural Sciences

15

Arts & Sciences Electives

12

Total General Education Component

61

BACHELOR'S-LEVEL NURSING COMPONENT

Credit Hours

30 semester hours of nursing credit granted for prior learning validated by nursing education and successful completion of the NCLEX-RN®.

30

NUR 436 **Professional Transitions**

3

NUR 442 **Health Assessment and Promotion in Nursing Practice**

4

NUR 446 **Teaching and Learning in a Diverse Society**

3

NUR 422 **Nursing Leadership and Management**

4

GRADUATE NURSING CORE

Credit Hours

NUR 513 **Research and Evidence-Based Practice**^④

4

NUR 531 **Health Care Delivery Systems Political, Social, and Economic Influences**

4

NUR 541 **Community Nursing: Human Diversity and Public Health**

4

Total Bachelor's-level Nursing Component

56

Once students complete the bachelor's component of the RN to MS in nursing program, they become master's degree students and are eligible to complete the remaining graduate-level courses.

MASTER'S COMPONENT

PHASE I

GRADUATE NURSING CORE

Credit Hours

NUR 502 **Theoretical Foundations of Nursing Practice**

3

NUR 514 **Professional Role Development**

3

Graduate Elective
(related to the specialization)

3

PHASE II

NURSING EDUCATION COMPONENT

Credit Hours

NUR 650 **Designing a Student-Learning Environment**

3

NUR 655 **Curriculum and Program Planning**

3

NUR 660 **Evaluation and Assessment in Nursing Education**

3

NUR 665 **Theories and Methods of Teaching with Technologies**

3

PHASE III

NUR 670 **Capstone Experience**

5

Total Master's Component

26

① Three credits must be at the intermediate or advanced level.

② Written English requirement (including Expository Writing core), information literacy, and ethics (upper level) must be completed prior to beginning the nursing component.

③ The Human Anatomy and Physiology requirement can also be met by: Anatomy (2 credits) and Physiology (2 credits)

④ Statistics is a prerequisite for the Research and Evidence-Based Practice course.

⑤ Information literacy must be completed within the first 13 Excelsior College credits attempted.



RN to Master of Science in Nursing with a Specialization in Nursing Informatics

RN to MS
141 Total Degree
Credits Required

BACHELOR'S-LEVEL GENERAL EDUCATION COMPONENT

Information Literacy^{②⑤}

**Credit
Hours**

1

English Composition^②

3

Expository Writing Core^{①②}

3

Total Written English Requirement

6

Humanities

9

Ethics Core (upper level)^②

3

Total Humanities

12

Social Sciences/History

9

Psychology Core Requirement

3

Sociology Core Requirement

3

Total Social Sciences

15

Natural Sciences/Mathematics

3

Human Anatomy and Physiology Core^③

4

Microbiology Core

3

Sciences Supportive of Nursing Core

2

Statistics Core^④

3

Total Natural Sciences

15

Arts & Sciences Electives

12

Total General Education Component

61

BACHELOR'S-LEVEL NURSING COMPONENT

**Credit
Hours**

30 semester hours of nursing credit granted for prior learning validated by nursing education and successful completion of the NCLEX-RN®.

30

NUR 436 **Professional Transitions**

3

NUR 442 **Health Assessment and Promotion in Nursing Practice**

4

NUR 446 **Teaching and Learning in a Diverse Society**

3

NUR 422 **Nursing Leadership and Management**

4

GRADUATE NURSING CORE

**Credit
Hours**

NUR 513 **Research and Evidence-Based Practice**^④

4

NUR 531 **Health Care Delivery Systems Political, Social, and Economic Influences**

4

NUR 541 **Community Nursing: Human Diversity and Public Health**

4

Total Bachelor's-level Nursing Component

56

Once students complete the bachelor's component of the RN to MS in nursing program, they become master's degree students and are eligible to complete the remaining graduate-level courses.

MASTER'S COMPONENT

PHASE I

GRADUATE NURSING CORE

**Credit
Hours**

NUR 502 **Theoretical Foundations of Nursing Practice**

3

NUR 514 **Professional Role Development**

3

Graduate Elective
(related to the specialization)

3

PHASE II

NURSING INFORMATICS COMPONENT

**Credit
Hours**

NUR 521 **Data, Information, and Knowledge**

3

NUR 551 **System Life Cycle**

4

NUR 680 **Management Information for Decision Support**

3

PHASE III

NUR 685 **Nursing Informatics Capstone**

**Credit
Hours**

5

Total Master's Component

24

① Three credits must be at the intermediate or advanced level.

② Written English requirement (including Expository Writing core), information literacy, and ethics (upper level) must be completed prior to beginning the nursing component.

③ The Human Anatomy and Physiology requirement can also be met by: Anatomy (2 credits) and Physiology (2 credits)

④ Statistics is a prerequisite for the Research and Evidence-Based Practice course.

⑤ Information literacy must be completed within the first 13 Excelsior College credits attempted.

RN to MS in Nursing Requirements



The RN to MS in nursing program requires completion of **141–143** credits—**61** general education credits and **81–83** nursing credits (depending on specialization).

You are subject to the degree requirements in effect at the time of your enrollment or program/degree transfer (program transfer refers to change from one school to another; degree transfer refers to changing degrees within the same school).

The faculty reserves the right to make changes in curricular requirements as necessary to reflect current professional practice. Changes may affect both enrolled and prospective students. It is your responsibility to keep informed of such changes. We make every effort to inform you of changes as they occur.

Current information about degree requirements is posted on our website. Information about changes to degree requirements is also made available on our [website](#).

General Education Component

61 credits

See [pages 32–34](#) in the undergraduate section of this catalog for detailed

information about undergraduate general education requirements. The bachelor's degree-level requirements must be completed before registering for any graduate-level courses.

Nursing Component

**81, 82, or
83 credits**

**Depending on MS
specialization**

The nursing component of the RN to MS degree includes bachelor's requirements and graduate-level requirements.

Prerequisites for all of the nursing courses include the written English, upper level

ethics, and information literacy requirements. Policies on repeating exams and criteria for waiver of bachelor's requirements are listed on [page 39](#) of this catalog.

Bachelor's Phase

The bachelor's component tests knowledge and professional competencies equivalent to

those expected of graduates of campus-based BS in nursing programs. Emphasis is placed on integration of nursing knowledge and related sciences in a variety of complex situations related to the nursing care of individuals, families, and communities with major health problems.

Students eligible for the RN to MS program will be granted a minimum of 30 semester hours of credits for prior learning that is validated by successful completion of the National Council Licensure Examination for Registered Nurses (NCLEX-RN®) and learning validated by prior education.

The requirements in the bachelor's component of the RN to MS program that are common to the Bachelor of Science in nursing program are **NUR 422 Nursing Leadership and Management**, **NUR 442 Health Assessment and Promotion in Nursing Practice**, **NUR 446 Teaching and Learning in a Diverse Society**, and **NUR 436 Professional Transitions**.

RN to MS students complete three graduate-level online courses as part of their undergraduate requirements: **NUR 513 Research and Evidence-Based Practice**; **NUR 531 Health Care Delivery Systems: Political, Social, and Economic Influences**; and **NUR 541 Community Nursing: Human Diversity and Public Health**.

RN to MS students do not complete the undergraduate Community-Focused Nursing and

Research in Nursing, or the Nursing Capstone requirement. Their study of community health nursing, research, and capstone content are at the graduate level.

Nursing courses from hospital diploma programs both in the United States and abroad are not eligible for transfer credit.

Contact your academic advisor for program planning assistance.

Bachelor's Phase Requirements

(See the bachelor's degree program section, [page 34–page 36](#), for descriptions of the following requirements.)

NUR 436 Professional Transitions 3 credits

NUR 442 Health Assessment and Promotion in Nursing Practice 4 credits

NUR 446 Teaching and Learning in a Diverse Society 3 credits

NUR 422 Nursing Leadership and Management 4 credits

IMPORTANT:

Throughout this catalog the term “credits” is used to indicate semester hours. Quarter hours are converted to semester hours by multiplying quarter-hour values by two-thirds.

(See the graduate degree program section, [pages 38–page 54](#), for descriptions of the following courses.)

NUR 513 Research and Evidence-Based Practice 4 credits

NUR 531 Health Care Delivery Systems: Political, Social, and Economic Influences 4 credits

NUR 541 Community Nursing: Human Diversity and Public Health 4 credits

Graduate-Level Phases

Students who complete the bachelor's component are granted graduate status. Having completed 12 of the 37–39 master's-level credits as undergraduates, they then complete the remaining credits of the master's degree program in the Nursing Leadership and Administration of Health Care Systems, Nursing Education, or Nursing Informatics specialization. See [pages 38–page 54](#) for descriptions of required courses.

Your Personalized MyExcelsior Account:
www.excelsior.edu/MyExcelsior

Fee Schedules, Financial Aid, and Scholarships:
www.excelsior.edu/fees
www.excelsior.edu/financialaid
www.excelsior.edu/scholarships

College Publications, Applications, and Forms:
www.excelsior.edu/publications

Student Policy Handbook:
www.excelsior.edu/studentpolicyhandbook

Course and Exam Information and Registration:
www.excelsior.edu/courses
www.excelsior.edu/exams
www.UExcelTest.com

Learning Resources:
www.excelsior.edu/myexcelsior, click on the Resources tab

Certificates in Nursing

Graduate Certificates

Our graduate-level online nursing certificate programs offer an affordable, practical route to increasing career opportunities—and earning potential—in nursing education or management.

Your certificate can be a stand-alone educational credential or you may also apply the earned credits toward a master's degree.

Using convenient, flexible, and affordable online courses, our nursing certificate programs are designed for busy licensed registered nurses ready to assume leadership roles in nursing education or management.

Graduate Certificate in Nursing Leadership and Administration of Health Care Systems

This program is designed to meet the needs of nursing professionals seeking leadership, administration, and executive positions in a variety of health care settings. The certificate program also meets the needs of registered nurses currently in management who wish to pursue further learning and career advancement. The 12-credit graduate-level certificate program consists of four required courses. The courses are delivered entirely online for maximum flexibility.

Educational Outcomes

By completion of the program, the student will be able to:

- establish collaborative partnerships with interdisciplinary teams to pursue health-related goals and influence change.
- apply principles and theories of performance improvement, systems thinking, health policy, and resource allocation to manage the healthcare enterprise or outcomes.
- use knowledge and analytical skills to appraise the contextual environment of health care in order to inform and influence decision making across the health care system.
- apply knowledge and skills from multiple disciplines in the use of clinical management information systems to improve client (defined as individuals, families, aggregates, communities, and systems) care.

Admission

Prospective students must have an RN license and a bachelor's degree in nursing with at least

- one year of leadership experience or
- a bachelor's degree with a non-nursing major with at least one year of leadership experience

Required Courses

NUR 615 Management of Clinical Systems

3 credits

Management of Clinical Systems focuses on the application of management principles, processes, techniques, and tools to shape a supportive environment of care and promote continuous improvement in clinical care systems. It emphasizes environments of care, political, economic, technological, and social influences on care, workforce management, improvement initiatives, managing information, systems thinking, change theory, and health policy.

NUR 625 Management of Fiscal and Operational Systems

3 credits

Management of Fiscal and Operational Systems focuses on the application of management principles to design cost-effective clinical systems and to achieve optimal resource use across the health care enterprise. It emphasizes the integration of care, quality, and finance to design cost-effective clinical systems.

NUR 635 Leadership of the Organizational System

3 credits

Leadership of the Organizational System focuses on critical examination of leadership styles, strategies, and competencies of the nurse executive in order to successfully manage the health care enterprise. It emphasizes leadership skills for strategic planning, enhancing team performance and interdisciplinary collaboration, and creating a culture of quality performance and quality initiatives.

NUR 680 Management Information for Decision Support

3 credits

Management Information for Decision Support focuses on the identification, acquisition, analysis, interpretation, and application of data, databases, and decision-making strategies for healthcare. It emphasizes decision support systems concepts, methodologies, and technologies, and includes content on model management, knowledge management, and strategies to consider when selecting decision support systems.

Post-Master's Certificate in Nursing Education

This program is designed to meet the needs of nursing professionals in academic or clinical teaching roles who wish to pursue further learning in nursing education and to address the critical shortage of nurses in teaching roles. The certificate program consists of 12 graduate-level credits with three required courses and the choice of one elective from two other specific courses. The courses are delivered entirely online for maximum student flexibility.

Educational Outcomes

By completion of the program, the student will be able to:

- apply knowledge and skills from multiple disciplines in designing curricula and formatting program outcomes.
- create an educational environment that facilitates student learning and achieves desired outcomes.
- develop approaches to the educational environment that address the cultural, ethical, legal, social, economic, and political requirements of diverse populations and stakeholders and impact the educator role.
- use multiple strategies to assess and evaluate learning in various settings.
- develop knowledge and skills to prepare for the National League for Nursing Certified Nurse Educator (CNE) examination.

Admission

Prospective students must have an RN license and a bachelor's degree in nursing and a

- master's degree in nursing or a related field or
- a bachelor's degree with a non-nursing major and a master's degree in nursing

Required Courses

NUR 650 Designing a Student Learning Environment 3 credits

Designing a Student Learning Environment focuses on the creation of teaching-learning environments and the integration of the role of faculty/educator, the uniqueness of the student learner, the setting and context within which the learning occurs, the teaching-learning strategies used to promote nursing education, and the evaluation of the effectiveness of this process.

NUR 655 Curriculum and Program Planning 3 credits

Curriculum and Program Planning focuses on curriculum and syllabus/program development, including theoretical frameworks and design, philosophical foundations, and selection of learning experiences to achieve outcomes.

NUR 660 Evaluation and Assessment in Nursing Education 3 credits

Evaluation and Assessment in Nursing Education is designed to introduce the student to the evaluation process including test construction, clinical performance assessment, program evaluation, and strategies for evaluating learning outcomes.

Elective Courses (choose one)

NUR 665 Theories and Methods of Teaching with Technologies 3 credits

Theories and Methods of Teaching with Technologies provides an opportunity to acquire knowledge and develop skills for using technologies to support the teaching-learning process, including using media, multimedia, and technology-rich and online learning environments.

NUR 690 Leadership in Nursing Education 3 credits

Leadership in Nursing Education is designed to provide students the opportunity to apply knowledge and competencies acquired during the program of study to actual educational situations and to incorporate formal leadership roles into their academic career trajectory.

Excelsior College Board of Trustees

Chair

Richard Yep, CAE

Executive Director and CEO
American Counseling Association
Alexandria, VA

Polly Baca, BA

President & CEO
Baca Barragan & Perez Associates
Denver, CO

Helen Benjamin, PhD

Chancellor
Contra Costa Community College District
Martinez, CA

Lyvier Conss, MA

Executive Director
Community College National Center for
Community Engagement (CCNCE)
Mesa, AZ

Linda Davila, BS, CFM, PIA, CIMA

(Vice Chair)
First Vice President—Investments
Merrill Lynch Global Wealth Management
Wealth Management Advisor
New York, NY

Don Dea, MBA

Cofounder
Fusion Productions
Webster, NY

The Honorable Bryanne Hamill

Family Court Judge (Ret.)
Kings County, State of New York
New York, NY

William G. Harris, PhD

CEO
Association of Test Publishers
Washington, DC

Harold (Bud) L. Hodgkinson, EdD

President
Hodgkinson Associates, LTD
Demographic Studies and Presentations
Alexandria, VA

Garry W. Jaunal, Esq.

Partner
Baker & McKenzie
Chicago, IL

Michael J. Loughran, BA

President
Aon Affinity Health Care Business Unit,
Aon Risk Solutions
Hatboro, PA

KH Maman, MSEE, MBA

Firm Director, Security & Private Services
Deloitte & Touche LLP
New York, NY

Jerry L. Neff, BS

Brig. General, ARNGUS (Ret.)
Regional President, M&I Bank (Ret.)
Bradenton, FL

Mary O'Connor, PhD, RN, FACHE

Associate Professor
Notre Dame of Maryland University
Baltimore, MD

David Oliker, MA

President & CEO (Ret.)
MVP Health Care
Schenectady, NY

Sharon I. Richie-Melvan, PhD

Colonel, U.S. Army (Ret.)
Director, Nursing Programs
Norwich University
Northfield, VT

Louis Soares, MPA

Vice President, Policy Research & Strategy
American Council on Education
Washington, DC

Harry L. Staley, MA, CIO, Treasurer

Owner Operator—McDonald's
Anna'D. Foods, Inc.
Annandale, NJ

Pamela J. Tate, MA, MS

President
The Council for Adult and
Experiential Learning (CAEL)
Chicago, IL

André Vacroux, PhD

Former President
National Technological University
Dean Emeritus, Engineering at
Southern Methodist University
Dallas, TX

Ex Officio

Terry Conry, PhD

Associate Vice President (Ret.)
Finance & Administration and
Chief of Staff, Ohio University
Co-Chair, Faculty Steering Committee

John F. Ebersole, LPD

President
Excelsior College
Albany, NY

Joseph B. Porter, Esq., Secretary

Vice President for Legal and
Governmental Affairs and General Counsel
Excelsior College
Albany, NY

William Senn, MS

President
Excelsior College Alumni Association
Franklin, TN

Chair Emeriti

Arthur J. Gregg, BS

Lt. General (Ret.), U.S. Army
Dumfries, VA

Joshua L. Smith, MAT, EdD

Professor and Director (Ret.)
Program in Higher Education and Center for
Urban Community College Leadership
New York University, School of Education
New York, NY

Trustee Emeriti

William E. Cox, EdD

President
Cox, Matthews, and Associates, Inc.
Fairfax, VA

Robert E. Kinsinger, EdD

Consultant
National Service Corps of
Retired Executives (SCORE)
Vice President (Ret.)
W.K. Kellogg Foundation
Twain Harte, CA

Jean M. Smith, BA

Vice President (Ret.)
J.P. Morgan Chase
Chase Community Development Corporation
New York, NY

Lawrence E. Vertucci, BA

Executive Vice President and
Regional President (Ret.)
HSBC Bank, USA
Albany, NY

John R. Wetsch, PhD, PMP

IT Director, Application Service Delivery
North Carolina Department of Revenue
Raleigh, NC

Excelsior College **Leadership Staff**

Executive Leadership Staff

John F. Ebersole, LPD

President

Mary Beth Hanner, PhD, RN

Provost and Chief Academic Officer

Wayne Brown, PhD

Vice President, Extended Education
CEO, Educators Serving Educators

Steve Ernst, PhD

Vice President for Innovation
and Strategy

Cathy S. Kushner, MA Ed

Vice President for
Institutional Advancement

Craig Maslowsky, MBA

Vice President for Enrollment
Management and Marketing

Edmund McTernan, Jr., MBA

Vice President for Human Resources
and Administrative Services

Susan O'Hern, BA

Vice President for
Information Technology

John M. Pontius Jr., CPA, MBA

Vice President for
Finance and Administration

Joseph B. Porter, Esq.

Vice President for Legal and
Governmental Affairs and
General Counsel

Academic Leadership Staff

Murray Block, EdD

Steve Ernst, PhD

Interim Co-Deans,
School of Business & Technology

Scott Dalrymple, PhD

Dean, School of Liberal Arts
Dean, School of Public Service

J. Patrick Jones, PhD

Vice Provost

Joan Mikalson, EdD

Associate Provost for Student
and Faculty Services

Mary Lee Pollard, PhD, RN, CNE

Dean, School of Nursing

Deborah Sopczyk, PhD, RN

Dean, School of Health Sciences

George Timmons, PhD

Associate Provost,
Center for Online Education,
Learning and Academic Services

School of Nursing Academic Leadership Staff

Patricia Cannistraci, DNS, RN, CNE

Assistant Dean
Bachelor's and Master's
Degree Programs
School of Nursing

Sandra A. DerGurahian, MS Ed

Director of Advisement and Evaluation
School of Nursing

Toni Doherty, PhD, RN

Associate Dean
School of Nursing

Karen Fagan, MS Ed

Director of Nursing Admissions
and Evaluation
School of Nursing

Renee Gecsed, MS, RN

Director of Regional Performance
Assessment Centers
School of Nursing

Kim Hedley, MS, RN, CPHQ

Assistant Dean
Associate Degree Nursing Programs
School of Nursing

Laurie Nagelsmith, PhD, RN, CNE

Associate Dean
School of Nursing

Barbara B. Pieper, PhD, RN

Associate Dean
School of Nursing

School of Nursing Faculty and Consulting Faculty

Susan E. Abbe, PhD, RN

(Higher Education Administration,
University of Connecticut)
Nursing Curriculum Specialist
Connecticut Community College System
Hartford, CT

Civita Allard, MS, RN

(Nursing SUNYIT)
Faculty Program Director
Excelsior College Albany, NY

Ida Mary Androwich, PhD, RN, FAAN

(Health Resource Management,
University of Illinois at Chicago)
Professor, Community Health and
Administrative Nursing
Niehoff School of Nursing Loyola
University, Chicago, IL

Sharon A. Aronovitch, PhD, RN

(Nursing, Adelphi University)
Faculty Program Director
Excelsior College, Albany, NY

Elizabeth A. Ayello,

PhD, RN, APRN, BC, FAAN
(Nursing, New York University)
Executive Editor, WCET Journal

Joanne Bonesteel, MS, RN

(Cardiovascular Clinical Specialization,
Boston College, Boston, MA)
Faculty Program Director
Excelsior College, Albany, NY

M. Sharon Boni, PhD, RN

(Cardiovascular, The Catholic
University of America, Washington, DC)
Dean, School of Nursing & Allied Health
Administration
Fairmont State University, Fairmont, WV

Patricia Cannistraci, DNS, RN, CNE

(Nursing Education and Leadership,
The Sage Colleges)
Assistant Dean
Excelsior College, Albany, NY

William K. Cody, PhD, RN, FAAN

(Nursing Science,
University of South Carolina)
Director of the School of Nursing
DePaul University, Chicago, IL

Ivory C. Coleman, EdD, RN

(Transcultural Health Nursing,
The Pennsylvania State University)
Professor, Nursing Department
Community College of Philadelphia,
Philadelphia, PA

Toni Doherty, PhD, RN

(Educational Theory and Practice,
State University of New York at Albany)
Associate Dean
Excelsior College, Albany, NY

Robin Dewald, PhD, RN

(Nursing Education, Capella University)
Nursing Faculty Member,
Excelsior College, Albany, NY

Kathie Doyle, MS, RN

(Clinical Nurse Specialist,
Medical Surgical Nursing,
The Sage Colleges)
Nursing Faculty Member
Excelsior College, Albany, NY

Amy Elinskas, MS, RN

(Nursing, SUNY at Utica/Rome)
Faculty Program Director
Excelsior College, Albany, NY

Barbara Fane, MS, RN

(Nursing, Russell Sage College)
Faculty Program Director
Excelsior College, Albany, NY

Renee Gecsed, MS, RN

(Nursing, The Sage Graduate School)
Director of Regional Performance
Assessment Centers
Excelsior College, Albany, NY

Kim Hedley, MS, RN

(Nursing Administration,
The Sage Colleges, Troy, NY)
Assistant Dean, School of Nursing
Excelsior College, Albany, NY

Pat Irons, MA, RN

(Teaching and Administration in
Associate Degree Nursing, Teachers
College, Columbia University)
Professor Emerita Queensborough
Community College

Susan Irvine, MS, RN, CNE

(Nursing, Excelsior College)
Faculty Program Director
Nursing Faculty Member
Excelsior College, Albany, NY

Beverly K. Johnson, PhD, RN

(Nursing, University of Texas at Austin)
Associate Professor, College of Nursing
Seattle University, Seattle, WA

Patricia W. Kelley, PhD, RN, FAANP

(Nursing Leadership,
The Catholic University of America)
Faculty Program Director
Excelsior College, Albany, NY

Kathleen Kennedy, MS, RN

(Medical-Surgical/Administration,
Russell Sage College)
Assistant Professor, Nursing Department
The Sage Colleges, Troy, NY

Ellen LaDieu, MS, RN

(Community Health Administration,
Russell Sage College)
Nursing Faculty Member
Excelsior College, Albany, NY

Mary Jo LaPosta, PhD, RN

(Parent-Child Nursing, Adelphi University)
Vice President and Chief Nursing Officer,
Saratoga Hospital, Saratoga, NY

Claire Ligeikis-Clayton, RN, MS, EdD

(Binghamton University)
Faculty Program Director
Excelsior College, Albany, NY

Faculty and Consulting Faculty (continued)

Fran Ludwig, MSN, RN

(Clinical Nurse Specialist,
Psychiatric-Mental Health Nursing,
Arizona State University)
Faculty Program Director
Excelsior College, Albany, NY

Frances Donovan Monahan, PhD, RN

(Research/Theory in Nursing,
New York University)
Professor, Department of Nursing
Rockland Community College, Suffern, NY

Kathleen Morgan, MS, RN

(Nursing Education, State University of
New York Institute of Technology)
Faculty Program Director
Excelsior College, Albany, NY

Shelley G. Moriston, PhD(c), PsyD, RN

(Nursing Education, Capella University)
Nursing Faculty Member

Laurie Nagelsmith, PhD, RN, CNE

(Educational Psychology,
State University of New York at Albany)
Associate Dean, School of Nursing
Excelsior College, Albany, NY

Barbara Nichols, MS, RN, FAAN

(Behavior Disabilities and Counseling,
University of Wisconsin)
President and CEO
Barbara Nichols Consulting
Philadelphia, PA

Dacey A. O'Malley, PhD, RN

(Program Development and Evaluation,
State University of New York at Albany)
Professor, Nursing Department
Hudson Valley Community College,
Troy, NY

Bonnie Page, MS, RN

(MS Health Education SUNY Cortland;
MS Nursing Family Nurse Clinical
Specialist with Nurse Practitioner Skills,
Binghamton University)
Faculty Program Director
Excelsior College, Albany, NY

Barbara B. Pieper, PhD, RN

(Nursing, Adelphi University)
Associate Dean
Excelsior College, Albany, NY

Mary Lee Pollard, PhD, RN, CNE

(Educational Theory and Practice,
State University of New York at Albany)
Dean, School of Nursing
Excelsior College, Albany, NY

Jayne Prendergast, MS, RN

(Nursing, SUNY at Binghamton)
Faculty Program Director
Excelsior College, Albany, NY

Larry D. Purnell, PhD, RN, FAAN

(Health Services Administration,
Nursing, Columbia Pacific University)
Professor, School of Nursing
University of Delaware

Lisa Robert, MS, RN

(Nursing, Russell Sage College)
Faculty Program Director
Excelsior College, Albany, NY

Nancy Smulsky, MS, RN, CPHQ

(Nursing, Excelsior College, Albany, NY)
Faculty Program Director
Excelsior College, Albany, NY

Maureen Straight, MS, RN

(Nursing, Excelsior College, Albany, NY)
Faculty Program Director
Excelsior College, Albany, NY

Rosemarie Van Patten MS, RN

(SUNY Institute of Technology, Utica, NY)
Faculty Program Director
Excelsior College, Albany, NY

Mark F. Wahl, MS, RN

(Nursing, Excelsior College)
Faculty Program Director
Excelsior College, Albany, NY

Helene Wallingford, MS, RN

(Parent & Child Nursing/Education,
The Sage Colleges, Troy NY)
Faculty Program Director
Excelsior College, Albany, NY

Nona Wilson, MS, RN

(SUNY Institute of Technology, Utica, NY)
Faculty Program Director
Excelsior College, Albany, NY

Ellen Zimmerman, MS, RN

(Nursing Education,
University of Phoenix)
Faculty Program Director
Excelsior College, Albany, NY

New York State Education Department Inventory of Registered Programs

Higher Education General Information Survey Code for Classifying Academic Subject Areas.

Program Title	HEGIS	Award
School of Business and Technology, Business Programs		
Administrative/Management Studies	5004	AAS
Business	5001	AS
Business	0501	BS
Accounting (NYS CPA Track)	0502	BS
Bachelor of Professional Studies in Business and Management	0599	BPS
Business	0506	MBA
School of Business and Technology, Technology Programs		
Cybersecurity	5199	Certificate
Cybersecurity Management	0799	Certificate
Cyber Operations	0702	BS
Technical Studies	5315	AAS
Management	0506	MS
Nuclear Technology	5316	AS
Technology	5315	AS
Technology	0925	BS
Electrical Engineering Technology	0925	BS
Information Technology	0702	BS
Nuclear Engineering Technology	0925	BS
Bachelor of Professional Studies in Technology Management	0599	BPS
Cybersecurity	0702	MS
School of Health Sciences Programs		
Health Care Informatics	1203.12	Certificate
Health Care Management	1202	BS
Health Sciences	1201	BS, MS

Program Title	HEGIS	Award
School of Liberal Arts Programs		
Liberal Arts	5649	AA, AS
Liberal Arts	4901	BA, BS
Liberal Studies	4901	MA
History	2205	BA, BS
Humanities	1599	BA
Natural Sciences	1901	BS
Psychology	2001	BA, BS
Social Sciences	2201	BS
Sociology	2208	BA, BS
School of Nursing Programs		
Nursing	5208	AAS, AS
Nursing	1203.10	BS, RN-MS, MS
Nursing Education	1203.12	Certificate
Nursing Leadership and Administration of Health Care Systems	1203.12	Certificate
School of Public Service Programs		
Criminal Justice	2105	BS, MS
Homeland Security	5505	Certificate
Military Studies	2299	BS



CREDIT BY EXAM

excelsior.edu/exams

ABOUT TEST PREPARATION SERVICES

Preparation for UExcel® exams and Excelsior College® Examinations, though based on independent study, is supported by Excelsior College with a comprehensive set of exam learning resources, and services designed to help you succeed. These learning resources are prepared by Excelsior College so you can be assured that they are current and cover the content you are expected to master for the exams. These resources, and your desire to learn, are usually all that you will need to succeed.

There are test-preparation companies that will offer to help you study for our examinations. Some may imply a relationship with Excelsior College and/or make claims that their products and services are all that you need to prepare for our examinations.

Excelsior College is not affiliated with any test preparation firm and does not endorse the products or services of these companies. No test preparation vendor is authorized to provide admissions counseling or academic advising services, or to collect any payments, on behalf of Excelsior College. Excelsior College does not send authorized representatives to a student's home nor does it review the materials provided by test preparation companies for content or compatibility with Excelsior College Examinations.

To help you become a well-informed consumer we suggest, before you make any purchase decision regarding study materials provided by organizations other than Excelsior College, that you consider the points outlined on our website at:

www.excelsior.edu/TestPrep

UExcel® EXAMS AND EXCELSIOR COLLEGE® EXAMINATIONS (ECES)

- The credit-bearing UExcel exams and Excelsior College Examinations save you time and money while accommodating your busy schedule.
- Join the tens of thousands of people, not just Excelsior College students, who have earned undergraduate college credit with UExcel exams and ECES.
- Study independently with a wealth of Excelsior College resources: everything from free examination content guides and free online tutoring to web-based practice exams and the Excelsior College Library. Take the exam when you're ready. Get the college credit you need to earn your degree.
- These exams complement the many other options for earning credit from Excelsior College: Excelsior College courses, industrial or military training, even a portfolio-based assessment to evaluate learning based on your life experience.
- The American Council on Education's College Credit Recommendation Service (ACE CREDIT) has evaluated and made college credit recommendations for UExcel exams and Excelsior College Examinations.
- Excelsior College has one of the oldest and most respected credit-by-exam programs developed and maintained by an accredited, degree-granting institution in the United States. Excelsior College, a private, not-for-profit institution, is widely recognized as a leader in the evaluation of prior learning, and offers a series of more than 40 undergraduate examination titles at both the upper- and lower-levels.

Contact the Admissions Office toll free at **888-647-2388, ext. 27**, to discuss how exams will fit into your academic plan.

"Students with prior learning assessment credit needed less time to earn degrees and had higher degree-earning rates."

March 2010 CAEL (The Council For Adult & Experiential Learning) study, *Fueling the Race to Postsecondary Success*

**REGISTER FOR AN EXAM TODAY
OR LEARN MORE BY VISITING:**

www.excelsior.edu/exams



7 Columbia Circle, Albany, New York 12203-5159

PHONE: | toll free **888-647-2388**
or **518-464-8500**

TDD: | **518-464-8501**

FAX: | **518-464-8777**

www.excelsior.edu

