

NURSING CATALOG



ABOUT EXCELSIOR COLLEGE

Excelsior College is a regionally accredited, nonprofit distance learning institution founded in 1971 focused on providing educational opportunity to adult learners. The College contributes to the development of a diverse, educated society by valuing lifelong learning with an emphasis on serving individuals who are historically underrepresented by higher education. Excelsior meets students where they are—academically and geographically—removing obstacles to the educational goals of adult learners through affordable access to quality instruction and the assessment of learning. Our pillars include innovation, flexibility, academic excellence, and integrity.

Excelsior College is committed to providing a learning and working environment that is free from illegal discrimination based upon an individual's race, ethnicity, national origin, age, religion, marital status, familial status, gender, gender identity, sexual orientation, physical or mental disability, genetic information, or military or veteran status. Illegal discrimination in any form will not be tolerated at the College.

Excelsior College is a Title IV-eligible institution offering federal student aid to students who qualify in course-based programs. Stand-alone exam-based options are not eligible.

OUR MISSION

Excelsior College provides educational opportunity to adult learners with an emphasis on those historically underrepresented in higher education. The College meets students where they are—academically and geographically, offering quality instruction and the assessment of learning.

VISION

Excelsior College is a provider of choice for adults seeking access to higher education and academic success, and it is a model for addressing societal and workforce needs.

ACCREDITATION

Excelsior College (and under its former name, Regents College) has been continuously accredited since 1977 by the Middle States Commission on Higher Education, 3624 Market Street, Philadelphia, PA 19104, 215-662-5606. Middle States is an institutional accrediting agency recognized by the U.S. Secretary of Education and the Council for Higher Education Accreditation (CHEA).

The associate, bachelor's, and master's degree programs in nursing at Excelsior College are accredited by the Accreditation Commission for Education in Nursing (ACEN):

Accreditation Commission for Education in Nursing (ACEN),
3343 Peachtree Road NE, Suite 850
Atlanta, GA 30326
404-975-5000
www.acenursing.us/accreditedprograms/programSearch.htm

The ACEN is a specialized accrediting agency for nursing recognized by the U.S. Secretary of Education and the Council for Higher Education Accreditation (CHEA).

The bachelor's degree programs in electrical engineering technology and nuclear engineering technology are accredited by the Engineering Technology Accreditation Commission of ABET, www.abet.org. The bachelor's degree program in information technology is accredited by the Computing Accreditation Commission of ABET, www.abet.org. ABET is a specialized accrediting agency recognized by the Council for Higher Education Accreditation (CHEA).

Excelsior College has received specialized accreditation for its business programs through the International Accreditation Council for Business Education (IACBE), 11374 Strang Line Rd., Lenexa, KS 66215. The business programs in the following degrees are accredited by the IACBE:

Bachelor of Science in Business with concentrations in: *Accounting, Finance, General Business, Logistics Management, Management of Human Resources, and Marketing*; and the Master of Business Administration (MBA) with concentrations in: *General Track (no concentration), Accounting, Health Care Management, Human Resource Management, and Leadership*.

All the College's academic programs are registered (i.e., approved) by the New York State Education Department.

RECOGNITION

The National League for Nursing (NLN) has designated the Excelsior College School of Nursing as a Center of Excellence in Nursing Education, 2016–2021. This distinction has been awarded in recognition of the College's sustained achievements in creating environments that promote student learning and professional development and it is the fourth consecutive designation the School has received since the NLN began the program in 2005.

The National Security Agency and the Department of Homeland Security designated Excelsior College as a National Center of Academic Excellence in Cyber Defense Education, 2019–2024.

Excelsior College has achieved institutional-level recognition for implementing Quality Matters™ standards for the design of online courses. The College systematically develops and evaluates its online courses based on rigorous, research-based Quality Matters™ standards to ensure learner engagement and provide tools and information for successful learning.

Message from the Dean



MARY LEE POLLARD, PhD, RN, CNE

Dear Student:

Congratulations on taking the next step in achieving your educational and professional goals. The faculty and staff of Excelsior College School of Nursing are here to guide your journey.

Our School of Nursing has been designated as a National League for Nursing (NLN) Center of Excellence in Nursing Education: Creating Environments That Enhance Student Learning and Professional Development, 2005–2008, 2008–2011, 2011–2016, and 2016–2021. This designation is something we are very proud of and strive to live up to every day!

Our faculty and staff are committed to providing an exceptional student experience from your first visit to our website, to receiving your diploma and attending an alumni event. Engage with your academic advisor, success coach, faculty and staff often. We are here to assist you.

As a not-for-profit, private institution of higher education chartered by the New York State Board of Regents, the College is accredited by the Commission on Higher Education of the Middle States Association of Colleges and Schools, one of the oldest and most respected regional accreditors in the United States. All of our nursing programs hold specialty accreditation by the Accreditation Commission for Education in Nursing (ACEN), which is recognized by the U.S. Secretary of Education. In addition, we are co-sponsors of the Tau Kappa At-Large chapter of Sigma Theta Tau International, Honor Society of Nursing.

This catalog describes all of our nursing degree programs in detail. Please take the time to read it carefully along with the Student Policy Handbook available on our website. I also encourage you to take full advantage of the many learning resources Excelsior College has to offer. We offer a full array of resources, designed and delivered by our nursing faculty and staff, that will be useful as you meet each of your program requirements.

Best wishes for your success!

A handwritten signature in dark ink that reads "Mary Lee Pollard". The script is fluid and cursive.

Mary Lee Pollard, PhD, RN, CNE
Dean, Excelsior College School of Nursing

LIMITATIONS

Information in this catalog is current as of August 2019, and is subject to change without advance notice.

CHANGES IN COLLEGE POLICIES, PROCEDURES, AND REQUIREMENTS

The College reserves the right to modify or revise the admission requirements of any program of the College; degree and graduation requirements; examinations, courses, tuition, and fees; and other academic policies, procedures, and requirements. Generally, program modifications and revisions will not apply to currently matriculated students so long as they actively pursue their degree requirements. However, in the event that it is necessary to make program changes for matriculated students, every effort will be made to give notice. It is also the responsibility of students to keep themselves informed of the content of all notices concerning such changes.

© 2019 Excelsior College.

“Excelsior College,” “CPNE,” “FCCA,” and “OneTranscript” are registered service marks of Excelsior College.

All rights reserved. Unauthorized reproduction or use prohibited.

Excelsior College maintains a drug-free workplace and is a drug-free school, as provided by the Federal Drug-Free Schools and Communities Act Amendments of 1989 and the Drug-Free Workplace Act of 1988.

Excelsior College is committed to providing a learning and working environment that is free from illegal discrimination based upon an individual's race, ethnicity, national origin, age, religion, marital status, familial status, gender, gender identity, sexual orientation, physical or mental disability, genetic information or military or veteran status. Illegal discrimination in any form will not be tolerated at the College. Portions of this publication can be made available in a variety of formats upon request.

Campus Crime Statistics can be found at the following website: <http://ope.ed.gov/security>

Many of the photos included in this catalog are of Excelsior College students and graduates.

THE EXCELSIOR COLLEGE SCHOOL OF NURSING OFFERS THE FOLLOWING DEGREE PROGRAMS:

▶ Associate in Science in Nursing	▶ Master of Science in Nursing Education
▶ Associate in Applied Science in Nursing	▶ Master of Science in Nursing Informatics
▶ Bachelor of Science in Nursing	▶ RN to Master of Science in Nursing Leadership and Administration of Health Care Systems
▶ Master of Science in Nursing Leadership and Administration of Health Care Systems	▶ RN to Master of Science in Nursing in Nursing Education
	▶ RN to Master of Science in Nursing Informatics

IS THE EXCELSIOR COLLEGE SCHOOL OF NURSING RIGHT FOR ME?

If you want to earn a college degree and you are self-motivated to work toward that goal, we can help. You have a good chance of succeeding in the School of Nursing if you:

- ▶ are self-motivated.
- ▶ can study independently.
- ▶ can learn by reading from a variety of printed and online materials.
- ▶ are comfortable using online tools such as Web pages, email, chats, etc.
- ▶ have already earned college-level credit via college courses, military training, etc.
- ▶ are organized and detail-oriented.
- ▶ can meet deadlines.
- ▶ have significant clinical experience, as required by our admissions criteria.

At the associate degree level, Excelsior offers a competency-based distance learning program. Associate degree students without licensure are prohibited from performing many clinical activities in their usual work setting. This is in contrast to students in campus-based instructional programs, who can engage in such learning activities under an exempt clause in the Nurse Practice Act. This clause enables them to perform patient care under faculty supervision. Students without a registered nursing license enrolled in Excelsior College are not eligible to practice under this clause, except during the actual administration of the Clinical Performance in Nursing Examination®. All students who pursue bachelor's or master's degrees in nursing at Excelsior College have a current license to practice as a registered nurse, and may, therefore, work within the scope of their license while engaging in educational endeavors.

Our nursing degree programs are specifically designed to serve individuals with significant experience in clinically oriented health care disciplines. While it is possible for some associate degree nursing students to learn the necessary nursing competencies in a learning laboratory and through observation, it is extremely difficult to do so. Students with a limited background in nursing or a related health care discipline are best advised to attend an instructional program. There is no clinical instruction provided in any program in the School of Nursing.

Excelsior College is not associated with, nor does it endorse, any external organization, external firm, or group that provides theoretical and clinical learning opportunities for students. Learning opportunities and resources are provided by the College and are described on our [website](#).

TAU KAPPA AT-LARGE CHAPTER, SIGMA THETA TAU INTERNATIONAL, HONOR SOCIETY OF NURSING

Tau Kappa At-Large, the Excelsior College and Empire State College chapter of Sigma Theta Tau International, Honor Society of Nursing, was originally chartered in July of 2004. It shares the vision of Sigma

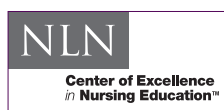
Theta Tau International—to create a global community of nurses

who lead using scholarship, knowledge, and technology to improve

the health of the world's people. Eligible bachelor's and master's degree students are invited for induction. Specific information about the chapter and its activities is available on a link from the [Excelsior College website](#).



Sigma Theta Tau International
Honor Society of Nursing®



The Excelsior College School of Nursing has been designated a Center of Excellence by the

National League for Nursing for 2005–2008, 2008–2011, 2011–2016, and 2016–2021. This coveted designation is awarded on the basis of a national peer-review process. Recognition by the National

League for Nursing as a Center of Excellence indicates that the Excelsior College School of Nursing

has demonstrated sustained, evidence-based, and substantive innovation in creating environments that enhance student learning and professional development, that it conducts ongoing research to document the effectiveness of such innovation, that the School sets high standards for itself, and that we are committed to continuous quality improvement.

The associate degree nursing team was honored with the **2014 Best Practices in Distance Learning Programming—Silver Award** from the **United States Distance Learning Association (USDLA)**.

Effective April 2014, the **National League for Nursing Center for Innovation in Simulation and Technology** will benefit from a five-year sponsorship by Excelsior College of NLN's Scholar-in-Residence Program. The NLN Excelsior College Scholar-in-Residence will facilitate career advancement for nurse educators with doctoral degrees, bringing them professional development opportunities and exposing them to the latest evidence-based scholarship.

In 2014, Excelsior College established the **Robert E. Kinsinger Institute for Nursing Excellence**. The Institute creates a space for interaction between staff, faculty, students, and alumni of the Excelsior College School of Nursing with the goal of promoting excellence in scholarly work.



TABLE OF CONTENTS

Message from the Dean	i	Excelsior College Board of Trustees	60
Important Information for All Students	vii	Excelsior College Leadership Staff	61
General Information for the School of Nursing	1	School of Nursing Faculty and Consulting Faculty	62
<i>Important Information Regarding The Associate Degree In Nursing Program</i>	6	Advisory Committee to the Excelsior College School of Nursing	63
Associate Degree Programs in Nursing	7	New York State Education Department Inventory of Registered Programs	64
Beliefs About the Practice of Associate Degree Nursing	7		
Associate Degree Requirements: General Education and Nursing	8		
Associate in Science	10		
Associate in Applied Science	13		
Bachelor of Science Program in Nursing	25		
Beliefs About the Practice of Bachelor's Degree Nursing	25		
Bachelor of Science in Nursing for Registered Nurses	26		
Graduate Degree Programs in Nursing	35		
Beliefs About Master's Degree Nursing Practice	35		
Master of Science in Nursing Leadership and Administration of Health Care Systems	40		
Master of Science in Nursing Education	44		
Master of Science in Nursing Informatics	48		
Dual Degree Programs in Nursing	55		
RN to Master of Science in Nursing	55		
<i>RN to Master of Science in Nursing Leadership and Administration of Health Care Systems Degree Chart</i>	52		
<i>RN to Master of Science in Nursing Education Degree Chart</i>	53		
<i>RN to Master of Science in Nursing Informatics Degree Chart</i>	54		

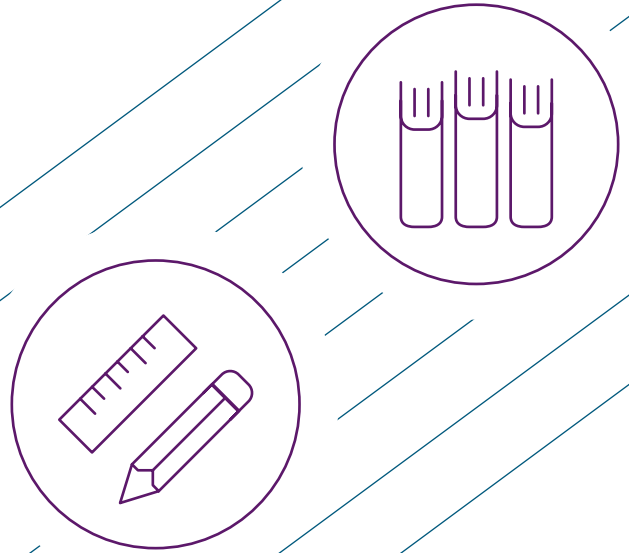
About Test Preparation and Tutorial Services

The College offers UExcel® exams and Excelsior College® Examinations designed to help you advance your academic objectives through independent study. A variety of learning resources, including content guides, guided learning materials, and practice tests, are available directly from Excelsior. These resources are prepared by Excelsior College so you can be assured that they are current and cover the content you are expected to master for the exams. Along with your own desire to learn, these resources are usually all that you need to help you succeed.

Some students may seek additional assistance or may be contacted by tutorial firms and test-preparation companies offering their own products and services. The College is not affiliated with any of these firms and does not endorse the products or services of any of these vendors since we do not review their materials for content or compatibility with UExcel® exams and Excelsior College® Examinations.

To help you become a well-informed consumer we suggest, before you make any purchase decision regarding study materials provided by organizations other than Excelsior College, that you consider the points outlined on our website.

excelsior.edu/testprep



IMPORTANT

We have been made aware of incidents in which a test-preparation firm has contacted an Excelsior College student requesting access to their Excelsior College® Examinations preparatory materials, including practice exams. Sharing learning resources with a test-preparation firm is a clear violation of the academic honesty code. Students found to have engaged in academic dishonesty at Excelsior College will be subject to disciplinary action.

Avoid placing yourself in academic jeopardy for disciplinary action. If you are approached by any individual or third party about sharing any Excelsior College-provided study materials, contact us at PR@excelsior.edu.

IMPORTANT INFORMATION FOR ALL STUDENTS

Student Policy Handbook

The Excelsior College [Student Policy Handbook](#) is your resource for understanding the academic and administrative policies that are important to your academic success. It includes a wide range of information from important federal policies, including your right to privacy, to grading policies and policies and procedures concerning refunds, withdrawals, and other administrative issues.

It is your responsibility to be familiar with these policies. The term “students” includes those currently matriculated at Excelsior College taking examinations and/or courses, non-matriculated students taking examinations and/or courses, non-matriculated students in the application process, individuals using the OneTranscript® service (formerly Credit Bank), formerly matriculated students currently in withdrawn status, and graduates.

Policies and procedures that apply only to a specific degree program are listed in the appropriate school catalog. You may download a copy of the [Student Policy Handbook from our website](#). File your handbook with your other important academic papers and this program catalog for easy reference.

Standardized Testing Participation

Students have a responsibility to participate in standardized tests (an example is the “Proficiency Profile” published by Educational Testing Services) that may be required during the period of their enrollment. These tests may be in addition to regular coursework and are required to gather critical information on achievement of student learning. Students are expected to actively participate and make every effort to do their best on these assessments to produce scores that accurately reflect their abilities. The results from these assessments will not be part of the course grade but are crucial for the purpose of program improvement and are frequently required by regulators and accreditation agencies. Participation in these assessments contributes toward increasing the value of the degree by providing evidence of student learning to external organizations, employers, and the general public.

Repeating any Excelsior College Examination or Course requires payment or tuition and related fees and expenses associated with the requirement.

Excelsior College Website

Through the College’s [website](#), you have access to a wealth of information to help you succeed as a student. If you haven’t already done so, create a [MyExcelsior user account](#). It will serve as your gateway to a variety of support services and is where you will find up-to-date information tailored to your specific academic program as well as general announcements from the College.

General Education Outcomes for All Undergraduate Degree Programs

Each undergraduate degree program has a strong arts and sciences component designed to help you develop a broad-based understanding of multiple disciplines, to provide a breadth of academic experience to enrich your life, and to allow you to become more informed and engaged as a citizen and a lifelong learner in an increasingly complex and changing world. This arts and sciences component, offered in a delivery model of flexibility, quality, and accessibility that is based on adult learning theory, helps you to integrate knowledge from multiple sources and experiences in diverse ways of knowing. These guiding principles have thus formed the five learning goals for General Education at Excelsior College.

- 1. Communication and Oral Expression**
Upon completion of their degree programs, Excelsior students will be able to express themselves effectively in English, both orally and in writing, and with clarity, persuasiveness, and coherence using standard conventions of communication.
- 2. Mathematics and Scientific Method**
Upon completion of their degree programs, Excelsior students will use scientific reasoning and basic mathematical calculations in problem solving in their daily lives.
- 3. Information Literacy**
Upon completion of the program, students will have learned to evaluate information critically. They will have learned to identify the amount and type of information needed, to locate and effectively access information, to evaluate the source of information, and to use it as per legal and ethical considerations.

4. Diversity and Global Understanding

Excelsior students will gain an understanding of a global society and appreciation for the complexities of diversity so they will be able to interact effectively with people from backgrounds and cultures different from their own. They will challenge their own sense of “self” vis-à-vis an understanding of those with different thoughts, beliefs, and traditional behaviors.

5. Ethics

Upon completion of the program, students will recognize the importance of ethical behaviors and decision-making.

For more information on the General Education goals and outcomes, visit www.excelsior.edu/gened.

Time to Degree Completion

Excelsior’s degree programs are designed to be completed at your own pace. However, at Excelsior, a student attending full-time could complete:

- ▶ an associate degree in four years;
- ▶ a bachelor’s degree in six years; or
- ▶ a master’s degree in four years.

Requirements for All Degree Programs

Students in all undergraduate degree programs at Excelsior College are required to meet requirements in the following general education categories:

- ▶ Information Literacy
- ▶ Written English
- ▶ Ethics
- ▶ Humanities
- ▶ Social Sciences and History
- ▶ Natural Sciences and Mathematics

Each degree program may require credits in specific, core subjects, within the categories listed above.

Students must work closely with their academic advisors to plan how to meet the requirements that are in place for their particular degree program.

Coursework used in transfer to satisfy the written English requirement must be from an English-speaking institution. English as a Second Language courses may not be used to satisfy the written English requirement.

Technology Literacy

Excelsior College Definition of Technology Literacy
Based on State Educational Technology Directors Association (SETDA)

Excelsior College defines technology literacy as the ability to identify and responsibly use appropriate technology to communicate, solve problems, and access, manage, integrate, evaluate, and create information to improve learning. This will facilitate the ability to acquire new knowledge for lifelong learning in the 21st-century global workplace.

Baseline Technology Skills and Resources

Prior to being admitted to Excelsior College, all students should be knowledgeable in the use of a personal computer (Windows or Macintosh). Entering students should have the ability to

- ▶ use a personal computer,
- ▶ use office automation programs to create, edit, store and print documents,
- ▶ use electronic communication tools, and search and retrieve information from electronic resources to complete assignments and activities.

Students must have reliable access to a computer with Internet connectivity.

Student’s computer and operating systems must meet the minimal technical requirements as noted in the Excelsior College Computer System Requirements (www.excelsior.edu/system-requirements).

Students must be able to use required software applications.

Students need to use the Excelsior College website to access information, resources, and the Message Center, and to participate in activities. See the Excelsior College Electronic Use policy (www.excelsior.edu/electronic-use-policy).

Students are required to conduct themselves appropriately and professionally at all times, including online.

Students need to use the Excelsior College website to access information, resources, and the Message Center.

EXCELSIOR COLLEGE SCHOOL OF NURSING



Mission Statement

The mission of the Excelsior College School of Nursing is to prepare nurses at the associate, baccalaureate, and master's level to achieve professional goals through a seamless transition along the educational continuum. The School of Nursing provides access to quality nursing education for a diverse and underrepresented population of adult learners to meet the global society's need for nurses.

Vision Statement

The School of Nursing is integral to the success and wellbeing of Excelsior College. Our faculty and staff inspire students to be lifelong learners by providing an environment that enables students to do their best work individually and collectively. By fostering passion and purpose for our staff, we create an atmosphere that cultivates academic achievement and fulfillment of our students.

Goals of the School of Nursing

- ▶ Maintain national leadership in nursing and distance education and serve as an advocate for innovative and alternative educational models.
- ▶ Continuously improve the student experience; promoting improved access, satisfaction and success.
- ▶ Maintain a healthy and diverse work environment in which faculty and staff can grow and develop intellectually and professionally.
- ▶ Sustain the School as a Center of Excellence in Nursing Education with an environment that develops students' values, socializes them to new roles, and creates a commitment to lifelong learning.
- ▶ Expand and enhance learning support services that are responsive to students' needs and reflect best practices.
- ▶ Provide evidence-based, high quality, rigorous, learner-centered academic programs.
- ▶ Provide flexible, dynamic, caring curricula with sound objective assessments that assure achievement of learning outcomes.

Philosophy

The faculty of the School of Nursing is committed to an educational philosophy that emphasizes competency assessment and learning at a distance. The faculty supports programs that are designed to meet the educational goals of a diverse population of adult learners who bring varied lifelong knowledge and experience to the learning encounter. The faculty views adult independent learning as a process of knowledge acquisition attained through exposure to varied planned educational strategies unconstrained by time and/or place.

We believe in the metaparadigm concepts of person, environment, health, and nursing. A person is a unique, diverse, complex holistic being with fundamental physiological, psychological, and spiritual attributes. A person is influenced by society and their cultural, moral, ethical, and spiritual persuasion. Nurses engage with patients in a dynamic partnership reflecting dignity, values, and respect. The environment consists of all persons, places, and health care policies that impact individuals, families, and communities. The environment influences access to care, health care delivery systems, health care providers, and health outcomes. The environment provides the context within which the nurse and individuals, families, and communities interact for the provision of health care.

We view health as the actualization of human potential. Health is manifested uniquely in multidimensional and dynamic patterns and processes across the life span in response to changes in the environment. Optimal health is a right of all individuals, families, and communities. Health and illness are viewed on a continuum. Health care providers collaborate with the person in decision making for maximizing human potential or achieving a peaceful death.

Nursing is a caring profession. The faculty believes nursing is a scientific discipline with a distinct body of knowledge, including principles of nursing leadership, ethical-legal practice, critical thinking, nursing process, and communication. Nursing collaborates with inter-professional health care teams to shape and improve patient outcomes. The focus of nursing is the health promotion and wellness, illness, disease, and injury prevention; and restoration of health of individuals, families, communities, populations, and systems. Nurses engage in professional role development throughout their career. This includes personal growth, learning new concepts, and developing a more sophisticated worldly

view of health care. The nurse uses evidence-based practice and information technology to advance the science and practice of nursing.

Nursing Education

Excelsior College School of Nursing offers associate, baccalaureate, and master's degree programs to promote academic progression and provide adult learners with the opportunity to achieve professional goals. The faculty believes that nursing education requires a solid foundation in the arts, sciences, humanities, and technology. The curricula build across the three programs and increase in complexity to meet the demands of the current health care environment.

The faculty and students are partners in the educational process to prepare graduates for practice in a complex, dynamic environment to provide safe, quality care. The faculty believes that curricula are best designed using consensus-building by a national faculty of content experts, nurse educators, researchers, and clinicians. These curricular decisions are based on principles of adult learning, internally generated data, and evidence of best practice in nursing education. The faculty believes that knowledge related to adult learning and assessment of competence support distance nursing education. The faculty believes that society's health care needs can be served by nurses with different levels of education.

Nursing Curricula

Organizing Framework for the Nursing Curricula

The organizing framework reflects the philosophy of the School of Nursing faculty and guides the curricula across the associate, baccalaureate, and master's programs. The faculty believes the metaparadigm concepts of nursing, person, health, and environment are interconnected with the concepts of nursing education, patient centeredness, nursing judgment, professional identity, and spirit of inquiry. These are foundational to contemporary nursing practice and reflected in student learning outcomes for each program, which increase in complexity and promote academic progression.

Metaparadigm Concepts: Definitions

Nursing Judgment

Encompasses the processes of critical thinking, problem solving, and ethical reasoning in reaching decisions through collaboration and integration of best evidence into nursing practice.

Patient

The individual within the context of the family.

Patient-Centeredness

An orientation to care that integrates and reflects respect for the dignity and uniqueness of individuals, their culture, values, personal preferences, and family traditions. Patient-centeredness supports respectful, efficient, safe quality nursing care to patients through all levels of care (NLN, 2010, p. 68). It advocates for patients to promote their self-fulfillment, integrity, and ongoing growth and development.

Professional Identity

“Involves the internalization of core values (caring, diversity, ethics, excellence, holism, integrity, and patient-centeredness) and perspectives recognized as integral to the art and science of nursing. These core values become self-evident as the nurse learns, gains experience, and grows in the profession” (NLN, 2010, p. 68) and promote the ideals of the nursing profession.

Spirit of Inquiry

“A persistent sense of curiosity that drives learning, practice,” and the profession. The nurse “raises questions, challenges traditional and existing practices, and seeks creative approaches to problems...in ambiguous and unpredictable situations” (NLN, 2010, p. 69).

The nursing degree programs meet the standards for registration by the New York State Education Department. The programs' curricula are comparable to campus-based instructional programs. In the associate degree programs, the student is able to demonstrate appropriate knowledge and competencies through a variety of assessment and evaluation methods, including review of credit earned from regionally accredited colleges, completion of nursing theory requirements, and criterion-referenced performance examinations and requirements. In the bachelor's degree program, the student is able to demonstrate generalist knowledge and competence through participation in online discussion, assessment of knowledge and experiential learning, evaluation of credit earned from regionally accredited colleges, and professional certification.

In the master's degree program, the student is able to demonstrate expert/specialty knowledge and skills through participation in online discussion, assessment of knowledge and experiential learning, and evaluation of credit earned from regionally accredited colleges.

Admission Requirements

All prospective nursing students must submit an application for admission to the School of Nursing. Each program has admission requirements, which can be found on the Admissions section of our website or by contacting our Admissions Office.

Applicants to the associate degree programs in nursing must meet the following criteria to be considered eligible for admission:

1. Hold active and unencumbered LPN/LVN licensure; or hold current and active paramedic certification; or currently serve in the U.S. military, National Guard or Reserves in a specific military occupation that is equivalent in scope of practice to LPN/LVN/paramedic.
AND
2. Submit written verification by supervisor of current employment in a direct patient care setting. Applicant will acknowledge that he or she is applying to a program that is designed for individuals with current, nursing-related health care experience.
AND
3. Earn the minimum required score(s), as established by the School of Nursing, on the Test of Essential Academic Skills (TEAS), no more than one year prior to application date.
4. The signed acknowledgment form

Further details on the admission criteria above are available from the College's Admissions Office and on our website.

The BS in nursing and the RN-MS in nursing programs are open to applicants who meet the following admission criteria:

1. hold an active and unencumbered RN license in the U.S.
AND
2. have earned an associate degree or diploma in nursing from a New York State (NYSED) approved program or a program with specialty accreditation, or a regionally accredited college.

The MS in nursing program is open to applicants who meet the following criteria:

1. hold an active and unencumbered RN license in the U.S.

AND

2. have earned a baccalaureate degree in nursing from a regionally accredited college or university (or the foreign equivalent), or from a college or university whose baccalaureate degree program in nursing was approved by ACEN, CCNE, or CNEA at the time of attendance.

Applicants with an active and unencumbered RN license and a bachelor's degree in a field other than nursing should consider the RN to MS program, which yields a bachelor of science degree in nursing, as well as a master of science degree in nursing.

The Undergraduate and Graduate applications for admission identify required supporting documentation for admission as well as details on the admission criteria above.

International Student Admission Requirements

Admission to the associate degree in nursing programs is not open to international students. For the bachelor's and master's programs, in addition to official transcripts, nursing candidates must demonstrate that they have an equivalent U.S. Registered Nurse (RN) license. To be eligible for admission, the applicant must be a graduate from an approved school of nursing in their country of education and hold a current, unencumbered nursing license (if licensed in multiple jurisdictions and/or countries, all licenses must be unencumbered). All nursing school transcripts and all licenses will be validated by primary source verification. International candidates must apply to the Commission on Graduate of Foreign Nursing Schools (CGFNS) New York Credential Verification Service (NYCVS) and the New York State Education Department (NYSED) to have their foreign nursing education evaluated and approved by the aforementioned organizations.

Detailed application information and instructions are found in the application for admission. Submit questions concerning international student admission requirements via email to: international@excelsior.edu.

English Language Proficiency Requirement

International candidates from non-English speaking countries must show evidence of sufficient English language proficiency through one of the following options:

1. Submission of TOEFL (Test of English as a Foreign Language) or IELTS (International English Language Testing System) taken within the last two years.
2. Successful completion of UExcel® exam **ENGx111 English Composition** or UExcel® exam **ENGx110 College Writing**.
3. Submission of evidence of the successful completion of at least 9 credit hours of academic work in courses delivered in English at an institution of higher education in the United States.

Time Limits and Average Time for School of Nursing Program Completion

All of Excelsior College nursing degree programs are designed to be completed with full-time or part-time study. Students can complete the degree at their own pace, but must be completed within a specified period. Time limits are cumulative. Students who do not meet the time limit for program completion are subject to dismissal from the School of Nursing. The faculty recognize that the time limits are generous and believe they are appropriate because the students served by the College are working adults

► Associate degree in nursing

Students have seven years to complete the associate degree in nursing programs. The average time to completion for part-time students is four and three-quarter years.

► Bachelor's degree in nursing

Students have seven years to complete the RN to bachelor's degree in nursing program. The average time to completion for part-time students is four years.

► Master's degree in nursing

Students have seven years to complete the master's degree in nursing program. The average time to completion for part-time students is three years.

► Registered Nurse to Master of Science in nursing completion program

Students have 12 years to complete the RN to MS in nursing program. The average time to completion for part-time students is five years.

Licensure

Excelsior College nursing programs are designed in accordance with the requirements for Registered Nurse programs in New York State. The associate degree programs prepare students for the National Council Licensure Examination for Registered Nurses (NCLEX-RN®) for practice in the United States. Excelsior College graduates who meet eligibility requirements are eligible to take the NCLEX-RN® in New York State.

Our graduates are eligible for licensure in most other states by examination or endorsement. However, states may have different requirements for pre-licensure education; students are responsible for determining the legal criteria for licensure in the state where they wish to practice. Some states have special licensure requirements for our graduates. Graduation from a registered and accredited program does not guarantee eligibility for licensure; students may also need to meet other requirements regarding age, high school graduation, type of education, and so forth.

If the state in which you wish to be licensed is part of the national compact for licensure, ask about those specific requirements.

You must contact the boards of nursing in the states where you wish to practice for information about their specific licensure requirements.

Excelsior College graduates who are licensed as RNs in one state may be employed as RNs by Veterans Administration institutions or other federal facilities anywhere in the United States.

Individuals convicted of felonies or certain misdemeanors or individuals with a history of substance abuse may not be eligible for licensure or eligible to take the required performance examinations for the Excelsior College nursing degree.

The School of Nursing supports our graduates in their preparation for the NCLEX-RN® by providing the Virtual-ATI® NCLEX-RN review course after successful completion of all degree requirements. Our students are required to complete assessments and work interactively with an ATI coach. This review is provided at no cost to students for 12 weeks. NCLEX-RN application documents are processed and sent to a student's state board of nursing when they reach the 50% completion mark. Students who complete the entire review course and take the NCLEX-RN within three weeks after receiving a "green light" from Virtual-ATI have a 97% pass rate.

You are encouraged to obtain a copy of the NCLEX-RN® Test Plan for the National Council Licensure Examination for Registered Nurses from the National Council of State Boards of Nursing Inc., 676 N. St. Clair St., Suite 550, Chicago, IL, 60611-2921, www.ncsbn.org.

Criminal Background Checks

All students in an associate degree in nursing program must complete a criminal background check prior to applying to take the Clinical Performance in Nursing Examination (CPNE®). Refer to the CPNE® Study Guide or the Excelsior College website for detailed information about the purpose of the background check, process for obtaining the check, and submission of records with your CPNE® application.

Clinical Credentialing Requirements

Once eligible to apply for the Clinical Performance in Nursing Examination (CPNE), all students are required to submit credentialing information to test in a hospital setting. This information includes, but is not limited to, a national background check, current CPR certification, vaccination, and health records (including current physical examination, current tuberculosis screening, MMR vaccination, Varicella vaccination, Hepatitis B vaccination, current influenza vaccination), and drug screening. Individual hospitals may have additional credentialing requirements. Students unable or unwilling to provide appropriate documentation may not be permitted to test at certain hospitals per hospital policy (which is subject to change). Excelsior College cannot guarantee placement of students in a clinical examination setting if the student is not able to meet hospital credentialing policy requirements. Please refer to the CPNE® study Guide or the Excelsior College website for additional information on the CPNE® application documents and process.

EXCELSIOR COLLEGE NURSING PIN

Excelsior College has a nursing school pin available to all graduates of the nursing programs. The pin features a reproduction of the Excelsior College logo. The nursing pin is a symbol of accomplishment, knowledge, and competence in nursing. Students will be notified that they are eligible to purchase a pin when they complete their degree program.



IMPORTANT INFORMATION REGARDING THE ASSOCIATE DEGREE IN NURSING PROGRAM

It is very important to be aware of the unique features of this online nursing program.

Distance education is as challenging as face-to-face instruction, if not more so. The nursing component of the associate degree program requires outstanding critical thinking skills and nursing judgment, along with a commitment to academic rigor.

- ▶ The associate degree nursing program is designed for LPNs, LVNs, paramedics and certain classifications of active duty military, National Guard, or Reserves within specific military occupations with equivalent scope of practice to LPN/LVN or paramedic.
- ▶ A student's possession of an LPN, LVN, Paramedic or Military Corpsmen credential does not guarantee success in the associate degree nursing program.
- ▶ Excelsior College is not associated with, nor does it endorse, any external organization, external firm, or group that provides theoretical and clinical learning opportunities for students. Learning opportunities and resources are provided by the College and are described on our [Test Preparation Advisory web page](#).
- ▶ The School of Nursing offers [two modes of delivery](#) for the nursing theory series requirements: online courses and independent-study examinations. The eight theory requirements cover the same content, regardless of the method of delivery.
- ▶ The associate degree program is designed for individuals with experience in clinical settings. There is no clinical instruction provided in the associate degree nursing program. Students demonstrate their clinical competence during the capstone performance examination, the [Clinical Performance in Nursing Examination \(CPNE\)](#).
- ▶ Students are required to submit a [Verification of Health Care Experience Form](#) signed by a clinical supervisor at the time of admission and again at the time of FCCA eligibility.
- ▶ Students enrolled in the associate degree nursing program are assigned a primary academic advisor but may also work with different members of the academic advisement team during their enrollment.
- ▶ The wait time to test at each CPNE site varies depending on application volume at each site.
- ▶ Repeating any Excelsior College course, examination, or performance examination will require students to pay the tuition and/or fees that are associated with that requirement. This includes the CPNE application fee, travel, and lodging for each administration of the CPNE. Students will be responsible for paying the Student Services Annual Fee for each year they continue in the associate degree nursing program.
- ▶ Students who fail the CPNE will be required to retake all portions of the examination.
- ▶ A student's success or failure in completing program requirements (including courses, examinations, and the CPNE) will affect his or her progress through the associate degree nursing program. The time limit for completion of the associate degree is seven years.
- ▶ During the CPNE, Excelsior will seek to provide each student with a pediatric patient; however, an adult patient may be substituted if an appropriate pediatric patient is not available.
- ▶ [Pass rates for the CPNE and National Council Licensure Examination-RN \(NCLEX-RN®\)](#) are updated and available on the Excelsior College web site.
- ▶ Because each institution of higher education maintains its own credit transfer policy, credits earned in Excelsior's Associate Degree in nursing program may or may not be transferable to other institutions.
- ▶ Students are responsible for reading and understanding the RN licensure requirements in the state of their choice when planning for program completion or considering a change in their permanent address. Students may consult with the State Board team and review the [State Board Requirements web page](#) for current information regarding eligibility for RN licensure in each state and U.S. jurisdiction.
- ▶ Students are encouraged to read the School of Nursing catalog prior to enrolling in a program of study.

ASSOCIATE DEGREE PROGRAMS IN NURSING

ASSOCIATE IN SCIENCE AND ASSOCIATE IN APPLIED SCIENCE

Beliefs About the Practice of Associate Degree Nursing



The faculty believe Registered Nurses educated at the associate degree level are valued members of the nursing profession providing patient-centered care in a variety of settings, including acute and long term care, as well as in the home and in the community. The focus of nursing practice is care of individuals and their families throughout the lifespan. Nurses prepared at the associate degree level rely on evidence-based practice findings and standards of professional nursing practice to assist patients and families restore and/or maintain optimal health and guide individuals with chronic disease toward self-management. They collaborate with other members of the health care team, function as patient advocates within legal and ethical parameters to assure quality outcomes for patients and families across the health care continuum. Students in this competency based program are guided to embrace the metaparadigm concepts of the School of Nursing: patient-centered care, nursing judgment, professional identity, and spirit of inquiry. Graduates demonstrate mastery of the skills, knowledge, and abilities essential to enter the practice of professional nursing and are accountable to society and the profession of nursing.

Associate Degree Requirements: General Education and Nursing

Both the Associate in Science and the Associate in Applied Science require a total of 67 credits — 31 in general education and 36 in nursing. The two degrees have identical nursing component requirements, but they differ slightly in their general education requirements. The chart on [page 52](#) offers a visual representation of the AS and AAS programs.

You are subject to the degree requirements in effect at the time that your academic policy date is set or program/degree transfer (program transfer refers to change from one school to another; degree transfer refers to changing degrees within the same school).

The faculty reserves the right to make changes in curricular requirements as necessary to reflect current professional practice. Changes may affect both enrolled and prospective students. It is your responsibility to keep informed of such changes. We make every effort to inform you of changes as they occur. Current information about degree requirements is posted on our website. Information about changes to degree requirements is also made available on our website.

Purpose of the Associate Degree Nursing Programs

The purpose of the Excelsior College associate degree nursing programs is to provide an alternative educational approach to earning an associate degree in nursing. The student's qualifications as a learned individual and a competent member of the nursing profession are documented through an objective assessment program in general education and nursing education designed to promote:

- ▶ proficient in the delivery of safe, quality patient centered care.
- ▶ a sense of social responsibility and personal fulfillment by emphasizing the need for students to evaluate their own learning and potential achievements in terms of professional relevance and personal goals.
- ▶ a foundation for lifelong learning.

End-of-Program Student Learning Outcomes

1. Use a caring holistic approach to provide and advocate for safe quality care for patients and families in an environment that values the uniqueness, dignity, and diversity of patients.
2. Apply the nursing process to make nursing judgments, substantiated with evidence to provide safe, quality patient care across the life span.
3. Use principles of management and delegation to implement plans of care with members of the intraprofessional team to achieve safe, quality patient outcomes.
4. Demonstrate the standards of professional nursing practice and core values within an ethical and legal framework.

5. Apply principles of leadership and inter-professional collaboration to improve patient outcomes.
6. Use evidence-based findings and information technology to improve the quality of care for patients.

The end-of-program student learning outcomes are guided by the competencies developed by **National League for Nursing (2010)** and the **Quality and Safety Education for Nursing Institute, QSEN (2014)**.

National League for Nursing (2010). *Outcomes and competencies for graduates of practical/vocational, diploma, associates, baccalaureate, master's, practice doctorate, and research doctorate program in nursing*. New York, NY: Author.

QSEN Institute. (2014) *Competencies: Pre-licensure KSAS*. Retrieved from: www.qsen.org/competencies/pre-licensure-ksas.



Associate in Science and Associate in Applied Science in Nursing

67
CREDITS

GENERAL EDUCATION COMPONENT	CREDIT HOURS
▶ Information Literacy ^①	1
▶ Written English Requirement ^{② ③}	3
▶ Humanities Requirement	6
▶ Social Sciences	
Life Span Developmental Psychology Core ^②	3
Sociology Core ^②	3
▶ Natural Sciences and Mathematics	
Human Anatomy and Physiology Core ^②	4
Microbiology Core ^②	3
Mathematics ^②	2
▶ ASSOCIATE IN SCIENCE: Arts & Sciences Electives only	6
▶ ASSOCIATE IN APPLIED SCIENCE: Free Electives/Arts & Sciences	6
TOTAL CREDITS FOR ARTS AND SCIENCES COMPONENT	31
NURSING COMPONENT	CREDIT HOURS
▶ PHASE I ^④	
NUR 108 Transition to the Professional Nurse Role	3
NUR 104 Essentials of Nursing Care: Health Safety	3
NUR 105 Essentials of Nursing Care: Health Differences ^⑤	3
NUR 109 Foundations in Nursing Practice	3
▶ PHASE II ^④	
NUR 209 Reproductive Health	3
NUR 211 Health Differences Across the Life Span 1	3
NUR 212 Health Differences Across the Life Span 2	3
NUR 213 Health Differences Across the Life Span 3	3
▶ PHASE III: FOCUSED CLINICAL COMPETENCIES ASSESSMENT*	
274A FCCA*: Head-to-Toe Assessment and Nursing Process ^⑥	2
274C FCCA*: Managing Multiple Patients/Working with Interdisciplinary Teams ^⑥	2
▶ PHASE IV	
299 Clinical Performance in Nursing Examination (CPNE®) ^⑦	8
TOTAL CREDITS FOR NURSING COMPONENT	36
TOTAL DEGREE CREDITS REQUIRED	67

① This requirement must be completed within the first 13 Excelsior College credits attempted, and no more than five years prior to the academic policy date.

② This requirement must be completed before registering for any nursing theory requirements. Please note that Anatomy & Physiology and Microbiology need to have been completed no more than five years prior to the academic policy date.

③ This requirement must be completed within the first 13 Excelsior College credits attempted.

④ Phase I and II requirements are offered as online courses, NTCXs, or examinations. See page 15 for details.

⑤ This requirement can be waived if you hold a valid and current U.S. LPN/LVN license and have demonstrated success on the NCLEX-PN within five years prior to academic policy date. Submit a copy of your LPN/LVN license and official transcript for evaluation by an academic advisor.

⑥ Students are eligible for this requirement when all eight of the nursing theory requirements are complete, when a current VHCE form has been submitted, and no more than 10 credits in general education are still needed.

⑦ Students are eligible to apply for this examination after the entire FCCA* requirement is successfully completed. Please refer to page 16 for additional information on the CPNE.

ASSOCIATE IN SCIENCE

General Education Component (31 credits)

The general education requirements ensure that you develop basic college-level competence in the arts and sciences areas (humanities, social sciences/history, and natural sciences/mathematics) and information literacy, as well as the ability to express yourself in writing, read analytically, and think critically.

The study of the arts and sciences is an essential part of the preparation of a college graduate in that such study helps develop both knowledge in the discipline and an intellectual approach to problem solving. For more details on general education requirements across the College, please visit www.excelsior.edu/gened.

There are dozens of options for meeting the general education requirements. Students must work closely with the academic advising team to plan how and when they will meet their requirements. Thirty of 31 required general education credits must be earned in the arts and sciences. One credit must be earned in information literacy. Credits must be distributed as follows:

1. Information Literacy

Students are expected to demonstrate competency in information literacy. This requirement provides a broad overview of information literacy concepts.

The information literacy requirement must be completed within the first 13 Excelsior College credits attempted, and no more than five years prior to the academic policy date.

2. Written English Requirement

Three credits are required in expository writing, which may be at the freshman level. This requirement must be completed within the first 13 Excelsior College credits attempted, and before registering for any nursing theory requirements.

3. Humanities Requirements

The humanities requirements are designed to help you learn to read critically, reason well, think logically and critically, and express aesthetic appreciation.

A minimum of 6 credits must be earned in subjects such as art (e.g., appreciation, history, or studio), English, ethics, literature, music, philosophy, religion, theater, speech, and foreign languages.

Within the humanities distribution, students are required to complete a “core” requirement, which must be a minimum of 3 credits in a humanities subject other than English composition or expository writing. One introductory, applied, or professional writing course beyond the written English requirement may apply to the humanities distribution.

4. Social Sciences/History Distribution and Core Requirements

This distribution area is designed to provide you with a better understanding of people and society and the processes that individuals use to order their world. Studies of Western and other cultures are encouraged.

A minimum of 6 credits must be earned in subjects such as sociology, psychology, anthropology, history, geography, political science, and economics.

Within the social sciences/history distribution, students are required to complete the life span developmental psychology and sociology core requirements. The sociology and life span developmental psychology core requirements must be completed before registering for any nursing theory series requirements.

5. Natural Sciences/Mathematics Distribution and Core Requirements

The natural science/mathematics requirement is designed to provide you with the scientific background essential to nursing practice and an understanding of the natural world as well as teach you problem-solving skills.

Within the natural sciences/mathematics distribution, students are required to complete 9 credits including the core requirements of human anatomy and physiology (minimum 4 credits, covering all major body organ systems), microbiology (minimum 3 credits), and college-level mathematics.

The science courses must be of the depth and breadth appropriate for preparation as a registered nurse. Survey and diploma-level courses are not acceptable.

Students must complete the anatomy and physiology and the microbiology core requirements no more than five years prior to the academic policy date. The anatomy and physiology core, microbiology core, and college-level mathematics requirements must be completed before registering for any nursing theory series requirements.

Some state boards have specific requirements regarding the above-listed areas of study (e.g., some require a laboratory component for the science courses). Please be sure to check the licensure requirements in the state of your choice when planning your degree program.

6. Arts and Sciences Electives

In the Associate in Science degree program, an additional 6 credits are needed to satisfy general education requirements in the arts and sciences. These 6 credits may be distributed among the humanities, social sciences/history, and natural sciences/mathematics areas described above. Free electives (applied or professional courses) are not applicable to this requirement. You are encouraged to consider your interests carefully and to select subjects that complement your professional or personal interests. For example, if you are interested in working with elderly clients, you could complete examinations or courses in gerontology and the psychology of aging; or if you are interested in ethical issues, you might consider completing study in ethics, values, and philosophy. If you have a strong interest in the arts, you could study music, drama, or art. You are also encouraged to study a foreign language so you can communicate better with clients from other cultures. Always consult your advisor before registering for any examination or course.

ASSOCIATE IN APPLIED SCIENCE

Program in chart format on page 10.

General Education Component (31 credits)

The general education requirements ensure that you develop basic college-level competence in the arts and sciences areas (humanities, social sciences/history, and natural sciences/mathematics) and information literacy, as well as the ability to express yourself in writing, read analytically, and think critically.

The study of the arts and sciences is an essential part of the preparation of a college graduate in that such study helps develop both knowledge in the discipline and an intellectual approach to problem solving. For more details on general education requirements across the College, visit www.excelsior.edu/gened.

There are dozens of options for meeting the general education requirements. Students must work closely with the academic advising team to plan how and when they will meet their requirements. Of the 31 required general education credits, at least 24 must be earned in the arts and sciences. Of the remaining 7 credits, 1 credit must be earned in information literacy and the other 6 credits must be earned in any academic area other than nursing or physical education. If you have a degree in another applied field such as education, health, business, social work, or respiratory therapy, you may find that the Associate in Applied Science in nursing allows you to apply more transfer credit toward the general education component.

1. Information Literacy

Students are expected to demonstrate competency in information literacy. This requirement provides a broad overview of information literacy concepts.

The information literacy requirement must be completed within the first 13 Excelsior College credits attempted and no more than five years prior to the academic policy date.

2. Written English Requirement

Three credits are required in expository writing, which may be at the freshman level. This requirement must be completed within the first 13 Excelsior College credits attempted, and before registering for any nursing theory requirements.

3. Humanities Requirements

The humanities requirements are designed to help you learn to read critically, reason well, think logically and critically, and express aesthetic appreciation.

A minimum of 6 credits must be earned in subjects such as art (e.g., appreciation, history, or studio), English, ethics, literature, music, philosophy, religion, theater, speech, and foreign languages.

Within the humanities distribution, students are required to complete a “core” requirement, which must be a minimum of 3 credits in a humanities subject other than English composition or expository writing. One introductory, applied, or professional writing course beyond the written English requirement may apply to the humanities distribution.

4. Social Sciences/History Requirements

This distribution area is designed to provide you with a better understanding of people and society and the processes that individuals use to order their world. Studies of Western and other cultures are encouraged.

Within the social sciences/history distribution, students are required to complete the life span developmental psychology and sociology requirements. The sociology core and life span developmental psychology core requirements must be completed before registering for any nursing theory series requirements.

5. Natural Sciences/Mathematics Requirements

The natural sciences/mathematics requirement is designed to provide you with the scientific background essential to nursing practice and an understanding of the natural world as well as teach you problem-solving skills.

Within the natural sciences/mathematics distribution, students are required to complete 9 credits of natural sciences supportive of nursing that include human anatomy and physiology (minimum 4 credits), microbiology (minimum 3 credits), and college-level mathematics.

A combined human anatomy and physiology course must include all major body

systems and must be at least 4 credits. Survey or diploma-level courses are not acceptable.

Students must complete the anatomy and physiology and the microbiology requirements no more than five years prior to the academic policy date. The anatomy and physiology, microbiology, and college-level mathematics requirements must be completed before registering for any nursing theory series requirements.

6. Free Electives/Arts and Science Electives

The additional 6 credits may be earned in any of the above arts and sciences areas or in other college-level subjects such as health, business, computer science, counseling, education, or nutrition. Credit from associate-level nursing courses, physical education activity courses, and courses listed as remedial or developmental cannot be used to satisfy general education degree requirements.

Minimum Grade Required

The following requirements must be completed with a grade of “C” or higher. Courses less than 2 semester credits will not apply to meet these core requirements.

- ▶ Humanities
- ▶ Human Anatomy
- ▶ Human Physiology
- ▶ Life Span Developmental Psychology
- ▶ Microbiology
- ▶ Sociology
- ▶ Written English

Some state boards have specific requirements regarding the above-listed areas of study (e.g., some require a laboratory component for the science courses). Please be sure to check the licensure requirements in the state of your choice when planning your degree program.

Nursing Component for Both Associate Degrees in Nursing (36 credits)

The nursing component is designed to ensure that students possess competence in theory and performance in nursing comparable to the competence of graduates of campus-based associate degree nursing programs. The curriculum is designed to facilitate achievement of the educational program outcomes determined by the faculty.

Distance education is as challenging as face-to-face instruction, if not more so. The nursing component of the associate degree program requires outstanding critical thinking skills and nursing judgment, along with a commitment to academic rigor.

Most general education requirements must be completed before approval for nursing requirements can be granted. The prerequisites include written English, Life Span Developmental Psychology, Sociology, Anatomy & Physiology, Microbiology, and College-level Math. The two Excelsior College associate degree programs have identical nursing component requirements. In order to satisfy the 36-credit nursing component requirements, students must complete the two-part Focused Clinical Competencies Assessment (FCCA*), and the Clinical Performance in Nursing Examination (CPNE*).

The nursing component is divided into four phases, including the eight Nursing Theory Series Requirements, which must be completed in the phases shown in the degree chart on [page 52](#).

Students must complete all nursing theory requirements and can have no more than 10 credits still needed in general education before they are eligible for the FCCA*. Please see each requirement's description for its prerequisites.

The School of Nursing offers three modes of delivery for the nursing theory series requirements: online courses, NTCXs, and independent-study exams. The eight requirements cover the same content, regardless of the method of delivery. The difference is in how students learn the material. Visit our web site for additional details: www.excelsior.edu/nursingoptions.

The content of the nursing theory series corresponds to that which is typically included in the curricula of associate degree nursing programs at accredited community colleges. This content includes essential knowledge of medical, surgical, maternity, pediatric, and mental health nursing integrated with knowledge related to growth and development, nutrition and pharmacology, ethical and legal issues, and the arts and sciences.

Nursing Theory Completion Options

The nursing theory series includes the eight requirements in Phase I and Phase II. Phase I requirements must be completed before advancing to Phase II. The three delivery options for each requirement are: **Excelsior College nursing courses, Nursing Theory Conference Exams (NTCX), or Excelsior College Exams (ECE)**. The content in each requirement is identical across all three delivery options.

Online courses have a defined start and end date within an eight-week term during which students are required to complete weekly assignments and interact with other students and the faculty. They are similar to campus-based courses in this regard. However, since they are offered in an asynchronous format, students have some flexibility as to when they log in and participate in learning activities.

Online courses require weekly online discussions, writing assignments, and quizzes. Students should plan to spend 18 hours or more per week to complete coursework. Nursing theory course registration may be offered to students who:

- ▶ have completed Written English, Life Span Developmental Psychology, Sociology, Anatomy & Physiology, Microbiology and College-level Math.
- ▶ are within six credit hours of completion of all general education requirements
- ▶ have received official course approval

The passing grade for a nursing theory online course is C.

Nursing Theory Conference Examinations (NTCX) provide an 8-week, faculty-guided experience to assist in preparation for each nursing theory examination. While the conference portion of the NTCX is not graded, participation in weekly activities is required, including assigned readings, participation in weekly discussion questions, applying your nursing knowledge to case studies, use of self-check quizzes, and feedback from faculty. You must participate in the conference to receive the Authorization to Test (ATT) letter for the examination. We will send the ATT letter to you electronically, approximately 2 weeks prior to the end of the term. You must take the examination by the end of that 8-week term. The passing grade for the nursing theory examination portion of an NTCX is a C.

The final option for meeting nursing theory series requirements is to study independently, and earn credit by passing an **Excelsior College Examination in nursing theory**. Content Guides are available free of charge and provide an outline of the topics covered, a list of study resources, sample questions, and a how-to-prepare section. All resources are recommended by the Excelsior College faculty, who develop the examinations. Students should plan to spend a total of 135 hours or more in preparation for each nursing theory examination. Nursing theory exams must be taken during an approved trimester. The passing score for the Excelsior College nursing theory examinations is a C.

The theory examinations are administered via computer on an appointment basis at Pearson Testing Centers throughout the United States and Canada as well as in other selected locations.

Contact Excelsior College for examination content guides, applications, and information about Pearson Testing Center locations and examination fees. Write or call:

**Test Administration Office,
Excelsior College, 7 Columbia Circle,
Albany, NY 12203-5159
518-464-8500 or call toll free:
888-72EXAMS (888-723-9267)**

A description of the content in each nursing theory requirement, the FCCA®, and the CPNE® follows.

PHASE I: NURSING THEORY SERIES

Each requirement in the Nursing Theory Series is offered in three formats:

- ▶ online course (e.g., NUR 108)
- ▶ Nursing Theory Conference and examination (e.g., NURCx108)
- ▶ examination alone (e.g., NURx108)

Students must get approval from an Academic Advisor before registering.

Please note that it takes six (6) business days from the end of a course term until course grades are official and available. Students who choose to take online courses for their requirements must pay close attention to the College's academic calendar, and must work closely with their academic advisors regarding the timing of course terms and when approval can be granted.

NUR 108/NURCx108/NURx108**Transition to the Professional Nurse Role** 3 credits

Prerequisites: Written English, Life Span Developmental Psychology, Sociology, Anatomy & Physiology, Microbiology, and College-level Math.

The knowledge and competencies necessary to the role of the Registered Professional Nurse are addressed in this requirement. Assignment, delegation, and supervision responsibilities of the Registered Professional Nurse are emphasized. Recognition of the Registered Professional Nurse role in collaboration with the various interprofessional health care providers is presented. Forces affecting the role of the Registered Professional Nurse such as nursing history, nursing organizations, regulatory agencies, ethics, law, technology, health care delivery systems, and scope of practice are explored.

NUR 104/NURCx104/NURx104**Essentials of Nursing Care: Health Safety** 3 credits

Prerequisites: Written English, Life Span Developmental Psychology, Sociology, Anatomy & Physiology, Microbiology, and College-level Math.

This content focuses on the use of nursing process to provide and manage patient-centered care for persons across the lifespan. Therapeutic communication, stress and adaptation, and patient-teaching are discussed. Documenting and reporting nursing care and the use of informatics in health care are presented. The concepts of health promotion, maintenance, obtaining a health history and the techniques of physical assessment are presented. Attention to safe and effective care with respect to environmental safety needs, emergency preparedness, use of restraints, infection control and the prevention of pressure ulcers is explored. Pharmacology, safe medication administration and related nursing care are also addressed.

NUR 105/NURCx105/NURx105**Essentials of Nursing Care: Health Differences** 3 credits

Prerequisites: Written English, Life Span Developmental Psychology, Sociology, Anatomy & Physiology, Microbiology, and College-level Math.

Patient-centered care addressing the promotion of health and achievement of optimal outcomes for patients experiencing health problems related to nutrition, elimination, oxygenation, fluid and electrolyte balance, activity and sleep is presented in this requirement. Knowledge of anatomy and

physiology and the nursing process is used to support nursing judgment. Ethical and legal implications along with evidence-based standards of nursing practice are presented in relation to safe, quality nursing care for patients and families across the life span.

This requirement can be waived if you hold a valid and current U.S. LPN/LVN license and have demonstrated success on the NCLEX-PN® within five years prior to academic policy date. Submit a copy of your LPN/LVN license and official LPN/LVN program transcript for evaluation by an academic advisor.

NUR 109/NURCx109/NURx109**Foundations in Nursing Practice** 3 credits

Prerequisites: Written English, Life Span Developmental Psychology, Sociology, Anatomy & Physiology, Microbiology, and College-level Math.

This requirement focuses on the application of the nursing process to support nursing judgment for the provision of evidence-based, patient-centered care. This requirement also includes the care of culturally diverse patients experiencing health problems related to discomfort, pain, and sensory impairment. Growth and development and its relationship to health, injury prevention, illness, and continuity of care in a variety of settings are discussed. Chronic illness, disability, and end-of-life needs are addressed. Pertinent ethical, legal, and regulatory requirements, along with the standards of professional nursing practice, are addressed. Principles, concepts, and theories from the natural and social sciences in relation to safe nursing care are applied to patients and families across the life span.

PHASE II: NURSING THEORY REQUIREMENTS

NUR 209/NURCx209/NURx209**Reproductive Health** 3 credits

Prerequisites: All Phase I requirements, Written English, Life Span Developmental Psychology, Sociology, Anatomy & Physiology, Microbiology, and College-level Math.

The care of patients and families across the life span with needs related to human sexuality, childbearing, congenital anomalies, genetic disorders, and male/female reproductive disorders is the focus of this requirement. Evidence-based, culturally sensitive nursing care, standards of professional nursing practice, as well as ethical, legal, and regulatory requirements are addressed. Principles, concepts, and

theories from the natural and social sciences in relation to safe, quality nursing care are applied to patients and families across the life span. This course includes a virtual practice experience lab. Students are required to register for and successfully complete the practice experience to pass the course.

NUR 211/NURCx211/NURx211

Health Differences Across the Life Span 1

3 credits

Prerequisites: All Phase I requirements, Written English, Life Span Developmental Psychology, Sociology, Anatomy & Physiology, Microbiology, and College-level Math.

This requirement focuses on the application of the nursing process to support nursing judgment and the provision of patient-centered care for patients with acute and chronic cardiovascular and respiratory health problems, impaired blood cell formation, and abnormal cell growth. Evidence-based, culturally sensitive nursing care, standards of professional nursing practice, as well as ethical, legal, and regulatory requirements are addressed. The natural and social sciences are applied to the delivery of quality nursing care for patients and families across the life span.

NUR 212/NURCx212/NURx212

Health Differences Across the Life Span 2

3 credits

Prerequisites: All Phase I requirements, Written English, Life Span Developmental Psychology, Sociology, Anatomy & Physiology, Microbiology, and College-level Math.

This requirement focuses on the application of the nursing process to support nursing judgment and the provision of patient-centered care. A wide variety of health problems are presented. These include mental health disorders, cognitive impairment, diabetes mellitus, and dysfunction of endocrine, hepatic, biliary, renal, and pancreatic systems. Evidence-based, culturally sensitive nursing care, standards of professional nursing practice, as well as ethical, legal, and regulatory requirements are addressed. The application of anatomy and physiology, microbiology, and social science concepts is essential for the provision of safe quality patient care.

NUR 213/NURCx213/NURx213

Health Differences Across the Life Span 3

3 credits

Prerequisites: All Phase I requirements, Written English, Life Span Developmental Psychology, Sociology, Anatomy & Physiology, Microbiology, and College-level Math.

This requirement focuses on the application of the nursing process to support nursing judgment and the provision of patient-centered care for persons with health problems related to infectious and communicable diseases, tissue trauma, neurological dysfunction, and musculoskeletal disorders. Content areas include immune function, chain of infection, perioperative nursing, and neuromuscular functional assessment. Health problems such as HIV/AIDS, tuberculosis, hepatitis, degenerative diseases, stroke, and trauma are highlighted. Evidence-based, culturally sensitive nursing care, standards of professional nursing practice, as well as ethical, legal, and regulatory requirements are addressed. Principles, concepts, and theories from the natural and social sciences in relation to safe quality nursing care are applied to patients and families across the life span.

PHASE III

NURx274 Focused Clinical

Competencies Assessment® (FCCA®)

4 credits

Prerequisites: Students are eligible for this requirement when all eight of the nursing theory requirements are complete, when a new Verification of Health Care Experience (VHCE) form has been submitted, and when no more than 10 credits in general education are still needed. The VHCE form expires three (3) months after the date of your supervisor's signature. Students should consult with the academic advising team regarding the VHCE form.

Phase III of the nursing component is the Focused Clinical Competencies Assessment. This requirement consists of two eight-week assessments based on clinical simulations delivered via the Excelsior College learning management system. This requirement must be completed through Excelsior College. The FCCA® Review Guide will be provided upon eligibility for this requirement. The FCCA® provides a practice experience for students to demonstrate competencies related to the following two essential components of nursing practice:

► NURx274A FCCA: Head-to-Toe Assessment/ Nursing Process

The FCCA® Head-to-Toe Assessment and Nursing Process is an 8-week online assessment that measures knowledge, understanding, and applied skills required of the associate degree nurse to provide care to patients across the

life span. This clinically focused assessment requires the student to possess technical vocabulary and assessment skills, and to have knowledge of anatomy and physiology, and the psychosocial and physical development that are expected of the associate degree nurse. During this clinically focused assessment, the student is expected to demonstrate the knowledge and skills required of a first day graduate nurse when completing a health history, conducting a head-to-toe physical assessment, and developing a plan of care.

Students apply the nursing process to a variety of computer simulated patient care situations. Students use critical thinking skills and apply principles, concepts, and theories from the natural sciences, social sciences, and the humanities to make nursing judgments that result in safe, quality patient care. This curricular component includes a virtual practice experience lab. Students are required to register for and successfully complete the practice experience to earn a passing grade.

► **NURx274C FCCA: Managing Multiple Patients/Working with Interdisciplinary Teams**

The FCCA® Managing Multiple Patients and Working With Interdisciplinary Teams is an 8-week online assessment that measures knowledge, understanding, and applied skills required of the associate degree-prepared registered nurse to care for patients across the life span. During this clinically focused assessment, the student is expected to demonstrate the knowledge and skills required of a first-day graduate nurse for supervising a nursing team and collaborating with interprofessional (interdisciplinary) patient-centered teams. Throughout all aspects of the online assessment, the student is required to demonstrate the ability to apply the nursing process to a variety of computer simulated patient care situations, use critical thinking skills and apply principles, concepts, and theories from the natural sciences, social sciences, and the humanities to make nursing judgments that result in safe, quality patient-centered care.

Upon successful completion of each portion of the FCCA® (above), 2 credits will be awarded. Students must complete these assessments through Excelsior College. These assessments are graded as pass or fail. P grades are equivalent to a grade of C or better. Please refer to the Student Policy Handbook for the policy on grades awarded and accepted by Excelsior College.

PHASE IV

NURx299 Clinical Performance in Nursing Examination (CPNE®)

8 credits

Prerequisites: Students are eligible to register for the CPNE® when they have successfully completed all phase I, II and III requirements. The CPNE® application includes a health status report with immunization record, a current photo, current certification in Basic Life Support, and a criminal background check.

The CPNE® is an eight (8) credit criterion-referenced performance examination administered over two- and one-half (2 ½) days in an acute care hospital. It is a test that validates students have demonstrated entry-level RN competencies, while applying nursing knowledge, making patient-centered judgments, and performing psychomotor skills in simulated and authentic (direct) patient care settings. The exam is graded as pass (P) or fail (F).

During the CPNE®, simulated patient care is provided in the nursing simulation laboratory (nsl) and students use nursing judgment and perform skills associated with application of sterile technique and medication administration within a defined time frame. Students provide direct patient care during Patient Care Situations (PCSs) in a healthcare setting and demonstrate competencies by planning, implementing, evaluating, and documenting nursing care based on a patient assignment created by a Clinical Examiner, within a defined time frame.

To earn a passing grade, the student must pass two adult PCSs, one pediatric PCS, and the application of sterile technique and medication administration NSL stations. The student will have three opportunities to pass the adult PCS, two opportunities for the pediatric PCS, and two opportunities to pass each NSL station. Once a student fails one component for a second time, the exam ends. When a student does not achieve a passing grade in the exam, the student must retake all portions of the examination.

The CPNE® is the capstone requirement for the associate degree in nursing program, must be

completed through Excelsior College, and may not be waived. Students are responsible for all costs associated with CPNE® testing including travel costs. This includes repeating the examination. The examination may be repeated twice for a total of three opportunities.

For additional information about the CPNE® application process, the wait time from application to testing, and a list of current hospital test sites, visit the CPNE® area of our website www.excelsior.edu/cpne. Please note that CPNE® testing locations, and hospital specific requirements (i.e. vaccinations, criminal background check) are subject to change.

Administered in an acute care setting, the CPNE® is a test that validates the student possess clinical competencies focusing on the ability to identify, plan for, and meet a variety of patient care needs for adults and children with common health problems. Patients in these settings are experiencing potential, actual, and/or recurring health problems requiring maintenance and restorative interventions.

The CPNE® is organized around the nursing process. The planning phase includes assessment and analysis of information necessary for identifying nursing diagnoses. Nursing interventions are based on accurate assessments of the patient's response to health problems. Care of the patient is designed to maintain, restore, alleviate, or rehabilitate, and is then evaluated for effectiveness. Critical thinking, diagnostic reasoning, use of knowledge from nursing and related disciplines, and standards of care are assessed in this examination.

Students must complete this requirement through Excelsior College. This examination may not be waived under any circumstances.

Once an application for the CPNE is complete, students are placed in a queue for scheduling the examination. Complete applications are processed in the order in which they are received. The CPNE waiting period is an important consideration when planning for program completion.

This waiting period is an important consideration when planning for program completion.

Complete applications are processed in the order in which they are received.

For additional information about the CPNE® application process, the waiting time, and a list of hospital test sites, visit the CPNE® area of our website: www.excelsior.edu/cpne. Please note that CPNE® testing locations are subject to change. The CPNE® Study Guide provides information on the process and content of this criterion-referenced

performance examination and on the criteria for success. Multiple learning resources to assist students in developing professional and practice competencies are available, some require an additional fee. Enrolled students are provided an electronic copy of the Study Guide free of charge when they meet the eligibility requirements. It is essential to use the Study Guide to prepare for the CPNE®, focusing on areas of competency and critical elements to guide study and practice. Students who use a variety of learning resources, who contact our faculty members with questions, and who take a thorough and detailed approach when preparing for the examination are more likely to be successful.

The Study Guide is designed for use in preparing for the examination and is intended to serve as a supplement to information in nursing textbooks. In other words, it is intended to guide study, but does not replace in-depth information provided in nursing textbooks. Additional learning resources are listed on our website.

Policies Specific to the Associate Degrees in Nursing

The Excelsior College Student Policy Handbook is your resource for understanding the academic and administrative policies that are important to your academic success. It includes a wide range of information from important federal policies, including your right to privacy, to grading policies and policies and procedures concerning refunds, withdrawals, and other administrative issues. It is your responsibility to be familiar with these policies.

Please file your Handbook with your other important academic papers and this program catalog for easy reference. Policies and procedures that apply specifically to the associate degrees in nursing are listed on the following pages.

Minimum Academic Average

Grades of D are not acceptable in transfer. Grades of D and F earned in any Excelsior College course or general education examination will be listed on the academic record and official transcript and will be calculated in the GPA.

In order to graduate, students must have a cumulative average of C (2.0) or better. **Although grades of D for Excelsior College courses may be accepted for credit in the general education component (except where otherwise specified), students must have the necessary grades to achieve a C average.**

Time Limits

The associate degree in nursing programs are designed to be completed with full-time or part-time study. Students can complete at the degree at their own pace. Students in either the AS or AAS program are required to complete all degree requirements within a seven-year period. This time limit on enrollment is cumulative. **Those who do not complete the program within this time may be subject to dismissal.**

If a student withdraws from the School of Nursing and re-enrolls at a later date, a five-year age limit on nursing theory credits will be in effect.

General Education Component

With the exception of the information literacy, anatomy and physiology core, and microbiology core requirements, there are no time limits on general education examinations or courses submitted for transfer credit. Credits earned at regionally accredited degree-granting institutions or through approved examination programs and for which official transcripts are submitted will be evaluated regardless of when they were completed.

Students should plan carefully, consulting with their academic advisors, about the examinations and courses to take to fulfill degree requirements. We recommend that students obtain prior approval from an academic advisor before registering for an examination or course from Excelsior College. If seeking approval for a course offered by another regionally accredited institution, students must provide the course title, course number, and the name of the institution to the academic advisor; in some cases, it may be necessary for the student to submit a course syllabus as well, so the advisor can determine whether the course is applicable. In choosing courses to meet the general education requirements, students should consider selections that will help to meet future educational or professional goals.

Nursing Theory Series Policies

Policy on Registration Limitations for Nursing Theory Exams

A student in an associate degree in nursing program may be registered for a total of four nursing theory examinations at any one time. A student may register for an additional nursing theory examination once an exam has been completed provided the total number of scheduled examinations and pending examinations does not exceed four.

Nursing theory exam registration will follow the College's trimester calendar. Students must consult with the academic advising team for program planning and approval for nursing examinations.

All grades of "F" earned due to a "no show" will apply toward the students overall and Excelsior College grade point averages, will apply toward credits attempted and credits earned, and will apply as an examination attempt.

Students may repeat a failed examination 60 days after the first attempt and 120 days after the second and subsequent attempts.

Policies on Repeating Nursing Theory Series Requirements

Students enrolled in the associate degree in nursing program may take each nursing theory requirement up to three times. Failure of the requirement on the third attempt will lead to academic dismissal from the associate degree in nursing program. Withdrawn or prospective students who have failed a single nursing theory requirement three times will be denied admission to this program for at least five years.

Students who earn a total of six "D" or "F" grades in the nursing theory series (courses and exams) will be academically dismissed from the nursing program. Withdrawn or prospective students who have earned a combination of six "D" or "F" grades in the nursing theory series will be denied admission to Excelsior College associate degree in nursing program for at least five years.

Students will not be approved to retake requirements they have passed (grade of C or higher) in order to obtain a higher grade. If a student chooses to repeat a requirement that he or she has passed, it will not apply toward the degree.

All grades earned on Excelsior College nursing theory exams, online courses, and clinical requirements (including "D," "F," and "W" grades) will be posted on the student's academic record and on the Excelsior College transcript. This includes grades earned on nursing theory requirements, general education requirements, the Focused Clinical Competencies Assessment (FCCA®),

and the Clinical Performance in Nursing Examination (CPNE®). These grades will be calculated into the GPA.

Repeating any Excelsior College examination or course will require students to pay the tuition and/or fees that are associated with that requirement.

Focused Clinical Competencies Assessment* (FCCA®) and Clinical Performance in Nursing Examination (CPNE®) Policies

Policy on Repeating the FCCA® and CPNE®

Repeating either the FCCA® or CPNE® will require students to pay the tuition/fees/associated costs for each registration.

The FCCA® and CPNE® are graded pass/fail. Each examination may be repeated twice for a total of three opportunities. Failure of either requirement at the third administration will lead to academic dismissal from the nursing program.

Students must complete these requirements through Excelsior College.

Technical Standards for the CPNE®

Technical standards are the required and essential abilities that an individual taking the CPNE® must effectively demonstrate as an Excelsior College associate degree nursing student.

The CPNE® tests a student's application of the nursing process and technical components for nursing practice in the care of adults and children in the acute care setting. Therefore, the nursing student must be able to perform the following:

- ▶ Assess, perceive, and understand the condition of assigned patients.
- ▶ See, hear, smell, touch, and detect subtle changes in colors.
- ▶ Communicate (verbally and in writing) with English-speaking patients and/or family members/significant others as well as members of the health care team, including nurses, physicians, support staff, and faculty.
- ▶ Read and understand documents written in English.
- ▶ Perform diagnostic and therapeutic functions necessary for the provision of general care and emergency treatment to the patient.
- ▶ Stand, sit, move, and tolerate the physical exertion necessary to meet the demands of providing safe clinical care.

- ▶ Solve problems involving measurement, calculation, reasoning, analysis, and synthesis.
- ▶ Perform nursing skills in the face of stressful conditions and exposure to infectious agents and blood-borne pathogens.

Requesting Accommodations for the CPNE®

Excelsior College is committed to the principle that every individual should have an equal opportunity to enroll in an Excelsior College degree program, to register for courses or examinations in order to demonstrate their knowledge and skills under appropriate conditions, and to complete a degree. The College seeks to assure access by providing reasonable accommodations to individuals with physical, mental, or learning disabilities recognized under the Americans with Disabilities Act of 1990 (ADA) and the ADA Amendments Act of 2008 (ADAAA). Reasonable accommodation is the provision of aids, or modification to testing, services, or a program of study, that allows access by individuals with disabilities.

The ADA defines a disability as “any mental or physical condition that substantially limits an individual’s ability to perform one or more major life activities” as compared with the average person in the general population. Major life activities include, but are not limited to, walking, seeing, hearing, speaking, breathing, performing manual tasks, concentrating, caring for one’s self, working, learning, and the operation of a major bodily function such as those of the immune system, respiratory system, etc.

The ADA requires an institution of higher education to provide reasonable accommodations to a qualified individual with a documented disability, provided that the accommodation does not create undue hardship. An undue hardship refers to any accommodation that would be unduly costly, substantially disruptive, or that would fundamentally alter the nature of the program. Both matriculated and non-matriculated students may request reasonable accommodations from Excelsior College.

Additionally, the College is required to abide by the provisions of Section 504 of the Rehabilitation Act of 1973 which protect otherwise qualified individuals from discrimination based on their disability. In order to be otherwise qualified, a student with a disability must be capable, either with or without accommodation, of fulfilling the essential requirements of the educational program.

Individuals requesting reasonable accommodations are required to self-disclose to the disability services coordinator and submit a request in writing or an accessible format appropriate for their limitation, which generates a durable record.

The request must be accompanied by official documentation of the disability from an appropriate licensed professional, which must address the current functional limitation(s), the prognosis, and recommendation(s) of appropriate accommodation. Once eligibility has been established, accommodations are requested on a course-by-course (or exam-by-exam) basis.

You can find information about disability services, examples of accommodation, and the accommodation request process on our website at www.excelsior.edu/disability-services.

Canceling a Nursing Performance Exam

To cancel the CPNE® do so with thought and consideration as a cancellation fee is charged. Notify the CPNE® team in the School of Nursing as soon as you are aware of the need to cancel a confirmed examination date. You are also required to submit a written request for cancellation. Cancellation fees are charged according to the cancellation policy included with the confirmation materials.

Students who schedule and fail to appear for the Clinical Performance in Nursing Examination, at Excelsior College's designated testing center, will be considered a "no show." A grade of "F" will be awarded for each "no show" examination.

All grades of "F" earned due to a "no show" will apply toward the students overall and Excelsior College grade point averages, will apply toward credits attempted and credits earned, and will apply as an examination attempt. Students who opt to terminate their examination will be awarded a grade of "F."

Physical Education Courses

College courses in physical education can be applied toward the associate in applied science in nursing degree if they have a classroom component with a theoretical base and are applicable to the degree. Academic advisors may request course descriptions to verify the theoretical content of a physical education course.

Waiver of Excelsior College® Associate Degree in Nursing Theory Requirements

Under certain conditions, credits from previously completed degree-level nursing courses may be submitted for the purpose of requesting a waiver of an Excelsior College nursing theory requirement. Any requirement approved for waiver will be designated as a "pass" or "P" grade. Any such college coursework submitted for faculty review must:

- ▶ be from a regionally accredited degree-granting institution of higher education.
- ▶ have been completed no more than five years prior to the academic policy date^① in an Excelsior College nursing program.
- ▶ cover content equivalent to that of the theory requirement for which the waiver is sought.
- ▶ carry a grade of B or better.
- ▶ be submitted for faculty review before the theory examination or online course in that content area is taken.

Credit earned from most military service, foreign nursing schools, and occupational specialties may not be used to waive the nursing theory requirement because their course content is not equivalent. If you have this type of background, you should discuss options with an academic advisor.

Due to the comprehensive content of each Excelsior College nursing theory requirement, most students need a cluster of previous courses, including study of the care of adults and children, to meet the criteria for waiver. You are encouraged to obtain Excelsior College nursing theory examination content guides and/or course syllabi, and to review the content for comparison to courses already completed before submitting materials for waiver. This step may help determine which requirements to work on while waiting for the faculty to make a decision regarding a waiver request.

Nursing courses from licensed practical vocational nursing programs and hospital diploma programs both in the United States and abroad are not eligible for transfer credit since they do not carry college-level credits. However, the learning acquired in such coursework is an important and valued asset and may be converted into academic credit by passing the Excelsior College® Examinations in nursing. See the

^① If you transfer to a different degree program, the five-year time limit is based on the academic policy date for your new program.

description of Essentials of Nursing Care: Health Differences for special considerations for waiver of that requirement by LPN/LVN graduates.

Should your enrollment lapse and you reenroll, you will lose any nursing credits earned more than five years prior to the new academic policy date. If you have waived any of the nursing theory requirements during a previous enrollment, you will not automatically receive waiver of those same requirements when reenrolling. Upon reenrollment, Excelsior College nursing faculty will review the courses again to determine applicability toward current degree requirements.

Planning for Degree Completion

The average time from initial matriculation to program completion for part-time study is four and three-quarter years. You are encouraged to matriculate in the College to receive the necessary academic advisement necessary for degree completion.

Learning Resources and Assistance for AS and AAS Nursing Students

The primary learning resource for each requirement is either an examination content guide, course syllabus, review guide, study guide, required textbooks and associated readings, and journal articles. Students are expected to purchase or have access to the required textbooks for nursing requirements.

Other learning resources and assistance include:

- ▶ Online tutorials—no fee
- ▶ Webinars—no fee
- ▶ Online discussion boards—no fee
- ▶ Excelsior College online library—no fee
- ▶ Access to academic advisors via phone and Excelsior College Message Center to assist with program planning—no fee
- ▶ Access to nursing Faculty Program Directors via phone and Excelsior College Message Center to provide guidance, support, and education related to the nursing requirements—no fee
- ▶ Face to face workshops—some options have a fee for service, and other options have no fee
- ▶ Online conferences—fee for service
- ▶ Excelsior College ECE practice examinations—fee for service

For more details, visit the School of Nursing home page of Excelsior College's web site.

Nursing Theory Practice Examinations

Practice exams are available for all of the associate degree in nursing theory examinations as well as most of the exams fulfilling general education requirements. These practice exams are built from the same pool of items used to build the credit-bearing exams, written to the same specifications. Students can take two forms of practice exams online at home within a 6-month period. Valuable feedback is provided as students learn how they performed on each question and content area and why each answer was right or wrong. Although these exams are not directly predictive of performance on the credit-bearing exam, students can use them to improve their knowledge of the relevant subject material and upgrade their skills.

[illegible]

The faculty believes that bachelor's degree nursing practice requires an intellectual focus, the application of nursing theory, an extensive knowledge base, and the use of a scientific mode of inquiry. Nurses prepared at the bachelor's level use a distinct body of knowledge as well as intellectual and practice skills to provide culturally appropriate care to clients across the life span and at various points on the health-illness continuum. They are educated to deliver patient-centered care as a member of an interprofessional team emphasizing evidence-based practice, quality improvement approaches, and prevention. Nursing practice is built on nursing knowledge, theory, and research, and the nurse applies and adapts knowledge from other fields and professions as appropriate.

The program framework is based on the National League for Nursing's *Outcomes and Competencies for Graduates of Practical/Vocational, Diploma, Associate Degree, Baccalaureate, Master's, Practice Doctorate, and Research Doctorate Programs in Nursing* (NLN, 2010). This publication identifies curricular elements and expected outcomes and provides the educational framework for the preparation of professional nurses. Achievement of these outcomes enables graduates to practice in an ever-changing and complex health care environment. Concepts such as patient-centered care, nursing judgment, cultural sensitivity, professionalism, and spirit of inquiry are emphasized in the curriculum. A solid base of liberal education helps students develop an expanded world view that supports critical problem solving in addressing complex health care challenges.



Bachelor of Science in Nursing for Registered Nurses

121
CREDITS

GENERAL EDUCATION COMPONENT	CREDIT HOURS
► Information Literacy ^①	1
► Written English Requirement ^②	6
► Humanities	9
► Ethics Core ^③	3
► Social Sciences	
Social Sciences/History	9
Psychology Core	3
Sociology Core	3
► Natural Sciences and Mathematics	
Human Anatomy and Physiology Core	4
Microbiology Core	3
Sciences Supportive of Nursing Core	2
Statistics Core	3
Natural Sciences/Mathematics	3
► Arts & Sciences Electives	12
TOTAL CREDITS FOR ARTS AND SCIENCES COMPONENT	61
NURSING COMPONENT	CREDIT HOURS
30 semester hours of nursing credit granted for prior learning validated by nursing education and successful completion of the NCLEX-RN®. All requirements below are online courses.	30
► PHASE I	
NUR 336 The Profession of Nursing: Becoming Influential	3
NUR 338 Introduction to Informatics for Nurses	2
NUR 342 Holistic Health Care Across the Life Span	4
Nursing Elective (upper level) ^⑤	3
► PHASE II	
NUR 430 Research in Nursing ^④	3
NUR 446 Teaching and Learning in a Diverse Society	3
NUR 448 Community Health Nursing: Caring for the Public's Health	4
NUR 456 Leadership and Management in Nursing	4
► PHASE III	
NUR 462 Nursing Capstone ^{②③⑥}	4
TOTAL CREDITS FOR NURSING COMPONENT	60
TOTAL DEGREE CREDITS REQUIRED	121

① This requirement must be completed within the first 13 Excelsior College credits attempted, and no more than five years prior to the academic policy date.

② The Written English Requirement is a prerequisite NUR 462 Nursing Capstone. The Written English must be completed within the first 13 Excelsior College credits attempted.

③ The ethics core requirement is a prerequisite for the Nursing Capstone.

④ Statistics is a pre-/corequisite for Research in Nursing.

⑤ These credits are not required for students who earned an associate degree in nursing at Excelsior College.

⑥ Students are eligible for this requirement when the ethics core requirement is complete, when they have no more than 6 credits in general education still needed, and when all other nursing courses are complete. The nursing elective is the only nursing requirement that can be taken along with the capstone course.

BACHELOR OF SCIENCE IN NURSING FOR REGISTERED NURSES

The purpose of the nursing program is to build upon prior knowledge with new learning. Using both a teaching and outcomes assessment model, the program provides a flexible means for registered nurses to obtain their bachelor's degree. The program offers access to education for students of all backgrounds, including diverse and underserved populations. The curriculum serves as a foundation for graduate study and the pursuit of lifelong learning, which is essential for practice in the profession.

The Bachelor of Science in nursing requires a total of 121 credits including 61 in general education and 60 in nursing. You are subject to the degree requirements in effect when your academic policy date is set or program/degree transfer (program transfer refers to change from one school to another; degree transfer refers to changing degrees within the same school).

The faculty reserves the right to make changes in curricular requirements as necessary to reflect current professional practice. Changes may affect both enrolled and prospective students. It is your responsibility to keep informed of such changes. We make every effort to inform you of changes as they occur. Current information about degree requirements is posted on our website. Information about changes to degree requirements is also made available on our website.

End-of-Program Student Learning Outcomes

1. Promote holistic patient-centered care and population health supporting values, culture, right to self-fulfillment, and quality care outcomes.
2. Integrate evidence, nursing theory, and knowledge from other disciplines to guide nursing practice.
3. Formulate decisions based on nursing judgment and collaboration with the interprofessional team to achieve quality patient outcomes.
4. Incorporate professional core values, guidelines, standards of practice, and lifelong learning as a basis for professional nursing practice.
5. Apply principles of leadership to advocate for the unique role of the nursing profession within the health care system.
6. Engage in the spirit of inquiry to propose solutions that support nursing excellence.

Admission

The BS in nursing program is designed for registered nurses who:

- ▶ hold an active and unencumbered RN license in the U.S.,
AND
- ▶ have earned an associate degree or diploma in nursing from New York State (NYSED) approved program, or a program with specialty accreditation, or regionally accredited college.

Bachelor of Science in

Nursing Degree Requirements

The Bachelor of Science in nursing requires a total of 121 credits including 61 in general education and 60 in nursing.

You are subject to the degree requirements in effect when your academic policy date is set or program/degree transfer (program transfer refers to change from one school to another; degree transfer refers to changing degrees within the same school).

General Education Component

Because it contributes both knowledge and an intellectual approach to problem solving, the general education component is an essential part of preparation for professional nursing practice. The general education requirements ensure that the student will develop college-level competence in the arts and sciences areas of the humanities, social sciences/ history, and natural sciences/math.

General education credits may be earned through Excelsior College courses, UExcel® examinations, or transferred from accredited, degree-granting institutions or approved examination programs for which official transcripts are provided.

It is recommended that students seek formal course approval from their advisor prior to registering for courses or examinations. Enrolled students can log on to their customized MyExcelsior page, which provides options for meeting remaining requirements. Excelsior College academic advisors work with students to create study plans that best suit their learning styles, time frames, and budgets.

If you plan to enter a master's degree program, consider taking courses that support your area of interest. You should contact the graduate school that you wish to attend to request information about policies and requirements.

Please request course approvals well in advance of registration deadlines to avoid delays. To obtain course approval, contact an academic advisor via the Message Center or by phone and provide the name of the institution, the course title and catalog number, the academic department under which the course is offered, and the catalog content description. In some circumstances a course syllabus/outline may be requested.

General education courses taken within a nursing department or listed as "for nurses" are subject to classification review. Such courses often appear on transcripts as "Anatomy and Physiology for Nurses," "Nursing Chemistry," or "NURS: Pathophysiology."

Requirements

1. Information Literacy

Students are expected to demonstrate competency in information literacy. The information literacy requirement must be completed within the first 13 Excelsior College credits attempted.

2. Written English Requirement

Six credits are required in English composition. The first 3 credits in Written English must be completed within the first 13 Excelsior College credits attempted.

3. Humanities Requirements

The humanities requirements are designed to help you learn to read critically, reason well, think logically and critically, and express aesthetic appreciation. You are encouraged to study at least two disciplines in this area.

A minimum of 9 credits must be earned in subjects such as art (appreciation, history, or studio), literature, music, philosophy, religion, theater, speech, and foreign languages.

A minimum of 3 credits must be earned in a course in ethics. The ethics core requirement must be a general course in ethics that covers foundational theories, concepts, and selected issues related to ethical choices.

4. Social Sciences/History Distribution and Core Requirements

The social sciences/history distribution is designed to provide you with a better under-

standing of people and society and the processes that individuals use to order their world. You are encouraged to consider a course on the family or family dynamics to meet this requirement. An understanding of economics and violence is extremely useful in current health care environments. Studies in Western and other cultures are encouraged.

At least 15 credits must be earned in subjects such as history, geography, gerontology, economics, anthropology, political science, organizational behavior, sociology, and psychology.

Within the social sciences/history distribution students are required to complete one course/exam in psychology and one course/exam in sociology.

5. Natural Science/Mathematics Distribution and Core Requirements

The natural sciences/mathematics distribution is designed to help you develop a scientific mode of reasoning and an understanding of theory development and evaluation.

At least 15 credits must be earned in such subjects as biology, mathematics, statistics, chemistry, genetics, pathophysiology, and physics.

Within the natural sciences/mathematics distribution, students are required to complete 8 credits of natural sciences supportive of nursing, including human anatomy and physiology and microbiology. Students who do not have a total of 8 credits in the core requirements of anatomy and physiology and/or microbiology will need an additional 2 credits of natural sciences supportive of nursing that may be in biology, chemistry, genetics, pathophysiology, or physics. Survey courses are not acceptable.

Students are also required to complete a course or exam in statistics. The statistics course must include both descriptive and inferential statistical measures. The statistics requirement can be completed before or along with the Research in Nursing course.

The remaining 12 arts and sciences credits may be distributed among the humanities, social sciences/history, and natural sciences/mathematics. Students are encouraged to study in a specific area or discipline that may be a personal or professional interest. Credits in free electives (applied/professional subject areas) are not applicable.

Meeting Core Requirements

The following requirements must be completed with a grade of “C” or higher. Courses less than 2 semester credits will not apply to meet these core requirements.

- ▶ Ethics
- ▶ Human Anatomy
- ▶ Human Physiology
- ▶ Microbiology
- ▶ Psychology
- ▶ Sociology
- ▶ Statistics
- ▶ Written English

Nursing Component

The nursing component focuses on knowledge and professional competencies expected of graduates of bachelor's programs. Emphasis is placed on integration of nursing and related arts and sciences knowledge in a variety of complex situations related to nursing care of individuals, families, aggregates, and communities. Distance education is as challenging as face-to-face instruction, if not more so. The nursing component of the degree program requires outstanding critical thinking skills and nursing judgment, along with a commitment to academic rigor. Nursing component requirements are divided into three recommended phases. Please see the following pages for the recommended sequence in which to take these requirements. It is recommended that you complete Phase I requirements before Phase II requirements.

Practice Experiences

The focus of practice experiences is very different than the “clinical” experiences of pre-licensure programs. As a baccalaureate nurse, the focus shifts away from individual patient care to community as client, population based health, and the role of the RN in influencing health care delivery.

The faculty define practice experiences as opportunities for students to provide nursing care in a variety of practice learning environments that support end of program student learning outcomes, program outcomes, and adult learning needs. Practice experiences are interactive, individualized, experiential learning experiences that provide and/or influence health care.

There are 155 practice experience hours dispersed over five courses in the RN- BS Nursing Program: NUR 342 Holistic Health Assessment Across the Lifespan, NUR 446 Teaching and Learning in a Diverse Society, NUR 448 Community Health Nursing, Caring for the Public's Health, NUR 456 Leadership and Management in Nursing, and NUR 462 Nursing Capstone. Examples of practice experiences include: virtual clinical simulation in physical assessment, educating staff on new evidence-based procedures, participating in administrative decisions about health care practices in an interprofessional team, and advocating for vulnerable populations by writing a letter to a legislator.

The course instructor provides regular feedback throughout the practice experience. Successful completion of the practice experience is required to pass the nursing course.

PHASE I

NUR 336 The Profession of Nursing: Becoming Influential

3 credits

Prerequisite: ENG 101 College Composition.

This course explores the evolution of contemporary nursing through the development of reflective practice, professional standards, values and beliefs, ways of knowing and nursing knowledge, and inter-professional communication and collaboration. Emphasis is placed on the roles of the bachelor's-prepared professional nurse, the processes guiding nursing practice, lifelong learning, and the influence nursing has in the changing health care environment and world. Through this course the student will develop a personalized toolbox with an array of skills necessary to become an influential professional nurse. **Delivery: Online course delivered over 8 weeks.**

NUR 338 Introduction to Informatics for Nurses

2 credits

Prerequisite: None

This course provides knowledge about the roles and skills in information management and the application of technology to inform nursing practice. Emphasis is placed on technological supports for patient care interventions and the use of decision-support systems to gather evidence to guide practice. The use and understanding of standardized terminologies and the role of information technology in improving patient

outcomes and creating a safe environment will be included.

Delivery: Online course delivered over 8 weeks.

NUR 342 Holistic Health Care Across the Life Span 4 credits

Prerequisites: Active and unencumbered RN license.

This course focuses on applying concepts of health promotion, as well as illness, disease, and injury prevention to health assessment across the life span. The student integrates the core concepts (critical thinking, communication, research, role development, caring, and cultural competence) into a holistic approach while functioning in the professional nursing role. Health and physical assessment data are gathered, analyzed, and synthesized by the student to develop a personal health plan for a client that promotes health and prevents disease. This course includes 60 hours of practice experience.

Delivery: Online course delivered over 15 weeks.

Nursing Elective Requirement (3 credits)

Consult with your academic advisor before taking a course or examination for nursing elective credit in order to be sure that you are choosing an acceptable option. A list of professional nursing certifications that may be used to fulfill the nursing elective requirement is on [page 27](#), and on our website.

Nursing elective credits are not required for students who earned an associate degree in nursing at Excelsior College.

PHASE II

NUR 430 Research in Nursing 3 credits

Prerequisites: Active and unencumbered RN license.

Statistics is a pre-/corequisite for this course.

This course focuses on knowledge and skill acquisition related to research process. Evidence-based practice, critical thinking, critical reading, and the baccalaureate nurse's role in the application of research to practice are emphasized. Course content examines the foundations of research, the research process, quantitative and qualitative research designs, as well as evaluation of a quantitative research study.

Delivery: Online course delivered over 8 weeks.

NUR 446 Teaching and Learning in a Diverse Society 3 credits

Prerequisites: Active and unencumbered RN license This course focuses on nursing principles and concepts as applied to the promotion and preserving of the health of populations. Students participate in rich interactive activities that involve community assessments, community connections, cultural awareness and sensitivity, health literacy, teaching and learning, advocacy, and critical self-reflection. The course requires 20 hours of practice experience. The practice experiences include two interviews with community members, writing two letters to community leaders related to an identified health need, researching the Center for Disease Control (CDC) and U.S. Census data, and completing a mini-windshield assessment of a community.

Delivery: Online course delivered over 8 weeks.

NUR 448 Community Health Nursing: Caring for the Public's Health 4 credits

Prerequisites: Active and unencumbered RN license.

This course integrates evidence, theory, standards, and knowledge from nursing, public health, and other disciplines to guide population-focused nursing practice. Importance is placed on the application of the core functions of public health: assessment, policy development, and the assurance of available and necessary health services for diverse populations. Emphasis is placed in identifying determinants of health, advocating for vulnerable populations, prioritizing primary prevention, and utilizing available resources to improve the health of populations. Population-focused nursing involves assessing the health care needs of a specific population and making health care decisions for the population as a whole rather than for individuals. This course includes practice experiences in the community. This course includes 45 hours of practice experience.

Delivery: Online course delivered over 15 weeks.

NUR 456 Leadership and Management in Nursing 4 credits

Prerequisites: Active and unencumbered RN license.

This course focuses on the application of leadership and management concepts and theories; inter-professional communication and collaboration; and evidence-based

strategies and inquiry within health care organizations. Team building, quality improvement, patient and staff safety, and fiscal management are addressed within the role of baccalaureate-prepared nurse leader and manager across a variety of health care settings. This course includes 10 hours of practice experience.

Delivery: Online course delivered over 15 weeks.

PHASE III

NUR 462 Nursing Capstone

4 credits

Prerequisites: Active and unencumbered RN license, ethics requirement, and written English requirement. Students are eligible for this requirement when they have no more than 6 credits in general education still needed, and when all other nursing courses are complete. The nursing elective is the only nursing requirement that can be taken along with the capstone course.

This capstone course focuses on integration and synthesis of knowledge, skills, and competencies from nursing, other disciplines, and the arts and sciences. Application of specific concepts and theories, such as communication, critical thinking, and leadership, enables students to transform theory to practice within health care systems. This course includes 20 hours of practice experience.

Delivery: Online course delivered over 15 weeks.

Certifications Approved for Elective Credit

The following are examples of nursing certifications that may be acceptable for nursing elective credits. Please check our website for the current list of certifications approved for elective credit.

- ▶ **AACN Certification Corporation (CCRN)**
 - ▶ Certification for Adult Critical Care Nurses (4 credits)
 - ▶ Certification for Neonatal Critical Care Nurse (4 credits)
 - ▶ Certification for Pediatric Critical Care Nurses (4 credits)

Two additional nursing elective credits will be awarded to students for each additional CCRN certification (adult, pediatric, neonatal). That is, the student will be awarded 4 credits for the first certification and 2 credits for each subsequent certification.

 - ▶ Certification for Progressive Care Nurses (PCCN) (3 credits)
- ▶ **American Board of Neuroscience Nursing**
 - ▶ Neuroscience Registered Nurse (Certified) (3 credits)
 - ▶ **American Board of Perianesthesia Nursing Certification Inc. (ABPANC)**
 - ▶ Certified Post-Anesthesia Nurse (CPAN) (3 credits)
 - ▶ Certified Ambulatory Perianesthesia Nurse (CAPA) (4 credits)

Five nursing elective credits will be awarded to students holding both CPAN and CAPA.
 - ▶ **American Nurses Credentialing Center**
 - ▶ Certified Gerontological (ADN) Nurse (3 credits)
 - ▶ Psychiatric and Mental Health Generalist (3 credits)
 - ▶ **Board of Certification for Emergency Nurses**
 - ▶ Certified Emergency Nurse (CEN) (3 credits)
 - ▶ **Competency and Credentialing Institute**
 - ▶ Certified Perioperative Nurse (CNOR) (3 credits)
 - ▶ **Medical-Surgical Nursing Certification Board**
 - ▶ Certified Medical-Surgical Registered Nurse (CMSN) (4 credits)
 - ▶ **National Board for Certification of Hospice and Palliative Nurses**
 - ▶ Certified Hospice and Palliative Nurse (CHPN) (3 credits)
 - ▶ **Oncology Nursing Certification Corporation Certified Breast Care Nurse (CBCN)** (3 credits)
 - ▶ **Pediatric Nursing Certification Board**
 - ▶ Certification in Pediatric Nursing (CPN) (3 credits)

Policies Specific to the Bachelor of Science in Nursing

The Excelsior College Student Policy Handbook is your resource for understanding the academic and administrative policies that are important to your academic success. It includes a wide range of information from important federal policies, including your right to privacy, to grading policies and policies and procedures concerning refunds, withdrawals, and other administrative issues. It is your responsibility to be familiar with these policies.

Policies and procedures that apply specifically to the bachelor's degree in nursing are listed on the following pages. File your Handbook with your other important academic papers and this program catalog for easy reference.

Enrolled students are required to maintain an active, unencumbered RN license. The College utilizes the Nursys E Notify service as our database management system. Students must provide the College with the following information for submission to Nursys E Notify:

- ▶ RN license number
- ▶ State of licensure
- ▶ Last four digits of your SSN
- ▶ Year of birth

Students whose license becomes inactive or encumbered during the program will not be permitted to register for a nursing course until the license is reactivated and unencumbered.

Admission

Registered Nurses

Excelsior College offers a bachelor's in nursing degree program for registered nurses. The program is open to applicants who meet the following admission criteria:

- ▶ hold an active and unencumbered RN license in the U.S., and
- ▶ have earned an associate degree or diploma in nursing from a New York State (NYSED) approved program, or a program with specialty accreditation, or a regionally accredited college.

International Student Admission Requirements

For the bachelor's program, in addition to official transcripts, nursing candidates must demonstrate that they have an equivalent U.S. Registered Nurse (RN) licensure. To be eligible for admission, the applicant

must be a graduate from an approved school of nursing in their country of education and hold a current, unencumbered nursing license (if licensed in multiple jurisdictions and/or countries, all licenses must be unencumbered). All nursing school transcripts and all licenses will be validated by primary source verification. International candidates must apply to the Commission on Graduate of Foreign Nursing Schools (CGFNS) New York Credential Verification Service (NYCVS) and the New York State Education Department (NYSED) to have their foreign nursing education evaluated and approved by the aforementioned organizations.

Detailed application information and instructions can be found in the application for admission. Submit email questions concerning international student admission requirements to international@excelsior.edu.

English Language Proficiency Requirement

International candidates from non-English speaking countries must show evidence of sufficient English language proficiency through one of the following options:

1. Submission of TOEFL (Test of English as a Foreign Language) or IELTS (International English Language Testing System) taken within the last two years.
2. Successful completion of UExcel® ENGx111 English Composition exam or UExcel® ENGx110 College Writing exam.
3. Submission of evidence of the successful completion of at least 9 credit hours of academic work in courses delivered in English at an institution of higher education in the United States.

Time Limit

The Bachelor of Science in nursing program is designed to be completed with full-time or part-time study. Students can complete the degree at their own pace, but must be completed within a seven-year period. This time limit is cumulative if enrollment is not continuous. **Those who do not complete the program within this time frame may be subject to dismissal. If a student withdraws from the School of Nursing and re-enrolls at a later date, a five-year age limit on nursing theory credits will be in effect.**

Technical Standards for RN to BS Program

Technical standards are the required and essential abilities that an individual in the RN to BS program

must effectively demonstrate in selected courses as an Excelsior College nursing degree student.

The components of the RN to BS program test a student's application of the nursing process and technical components for nursing practice. In addition, students must possess sufficient intellectual abilities and emotional health required for safe and effective practice. Therefore, the nursing student must possess sufficient skills for the following:

- ▶ Perform a physical examination on another person, including the skills of: observation/inspection, palpation, auscultation, and percussion.
- ▶ See, hear, smell, touch, and detect subtle changes in color.
- ▶ Perform parts of a physical examination in an online simulation experience, including sufficient hearing, and vision and manual dexterity for an online experience.

Policy on Repeating Nursing Online Courses

Students may take each nursing course a maximum of three times. Failure on the third attempt will lead to dismissal from the nursing program for at least five years.

Repeating any Excelsior College requirement will require students to pay the tuition and/or fees that are associated with that requirement.

Waiver of Excelsior College® Nursing Theory Courses

Under certain conditions, credits from previously completed bachelor's-level nursing courses may be submitted for the purpose of transfer or to request a waiver of an Excelsior College nursing theory course. Any requirement approved for waiver will be designated as a "pass" or "P" grade. Nursing courses from hospital diploma programs both in the United States and abroad are not eligible for transfer credit. Bachelor's course work submitted for faculty review for waiver must:

- ▶ be from a regionally accredited degree-granting institution of higher education.
- ▶ have been completed no more than five years prior to the academic policy date in the Excelsior College bachelor's nursing program.
- ▶ cover content equivalent to that of the course for which the waiver is sought.

- ▶ carry a grade of C or better.
- ▶ be submitted for faculty review before the theory course in that content area is taken.

Should your enrollment lapse and you reenroll, you will lose any nursing credits earned more than five years prior to academic policy date. If you have waived any of the nursing theory requirements during a previous enrollment, you will not automatically receive waiver of those same requirements when reenrolling. Upon reenrollment, Excelsior College nursing faculty will review the courses again to determine applicability toward current degree requirements. Any requirement approved for waiver will be designated as a "pass" or "P" grade.

You may not request a waiver of a specific course requirement if you have already failed the comparable Excelsior College course. Students must complete the Nursing Capstone requirement through Excelsior College.

Learning Resources

for Bachelor's Degree in Nursing Students

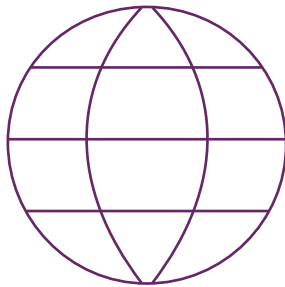
Learning resources for matriculated students can be found via the Resources tab on the MyExcelsior account.

To help students achieve their educational goals, the School of Nursing offers a variety of guided learning opportunities to enrolled students.

As an enrolled nursing student, you will have access to:

- ▶ academic advisors to assist you with program planning,
- ▶ nursing faculty program directors to assist with questions and concerns to answer questions about courses.

GRADUATE DEGREE PROGRAMS IN NURSING



Beliefs About Master's Degree Nursing Practice

The faculty believes that master's-prepared nurses in the fields of nursing leadership and administration, nursing informatics, and nursing education use knowledge from nursing and other professions to influence health policy, research, and professional practice in a variety of academic and service settings. They become leaders in creating collaborative environments that advance and promote professional practice. A master's prepared nurse will have the skills to implement safe quality care in a variety of settings and roles that influence health care outcomes for individuals, populations, or systems.

The program framework is based on the curricular elements and expected outcomes identified by the National League for Nursing in its *Outcomes and Competencies for Graduates of Practical/Vocational, Diploma, Associate Degree, Baccalaureate, Master's, Practice Doctorate, and Research Doctorate Programs in Nursing* (NLN, 2010). The program builds upon and extends students' existing knowledge and competencies gained from professional experiences and prior coursework. It emphasizes, as stated in the NLN's Outcomes and Competencies document, that "Master's-prepared nurses are expected to serve as leaders, members of interprofessional teams, and scholars who advance the profession, particularly in their chosen areas of specialization" (NLN, 2010, p. 40). A foundation of core courses prepares students with a theoretical base prior to study in their specific degree program. Content and concepts such as leadership and organizational skills, quality improvement, patient safety, health policy, global perspectives, communication, advocacy, interprofessional practice, and innovative technologies expand students' knowledge base and enrich their skills.

Purpose of the Graduate Programs in Nursing

The purpose of the master's in nursing programs is to prepare registered nurses for successful careers in a variety of academic and service settings as leaders and administrators in health care systems and nursing informatics specialists, and nurse educators. The programs educate students for advanced professional roles by creating an academic environment that fosters scholarship, critical thinking, and creativity. Using an instructional model through online courses and practice experiences and a rigorous, challenging curriculum, the programs provide a flexible means for registered nurses, including those from diverse and underserved populations, to obtain a master's degree. The programs emphasize pursuit of lifelong learning and professional development and serve as a strong foundation for doctoral study.

Distance education is as challenging as face-to-face instruction, if not more so. The nursing component of the degree programs requires outstanding critical thinking skills and nursing judgment, along with a commitment to academic rigor.

Program Requirements

Enrolled students are required to maintain an active, unencumbered RN license. The College utilizes the Nursys E Notify service as our database management system. Students must provide the College with the following information for submission to Nursys E Notify:

- ▶ RN license number
- ▶ State of licensure
- ▶ Last four digits of your SSN
- ▶ Year of birth

Students whose license becomes inactive or encumbered during the program will not be permitted to register for a nursing course until the license is reactivated and unencumbered.

End-of-Program Student Learning Outcomes

1. Function as a leader and change agent to promote holistic patient-centered care and population health.
2. Translate evidence to develop health care practices in a culturally and ethnically diverse global society.
3. Synthesize theoretical and empirical knowledge from nursing and other disciplines that are essential for nursing judgment and practice.
4. Integrate specialty practice knowledge to enhance interprofessional collaboration, inform decisions,

and improve outcomes.

5. Exemplify professional values and standards, best practices, and the commitment to lifelong learning in the role of the master's-prepared nurse.
6. Implement the role of master's-prepared nurse as part of the interprofessional team.
7. Integrate scholarship, a spirit of inquiry, and innovation to support nursing excellence.

Practice Experience

The faculty define practice experiences as opportunities for students to provide nursing care in a variety of practice learning environments that support end of program student learning outcomes, program outcomes, and adult learning needs. Practice experiences are interactive, individualized, experiential learning experiences that provide and/or influence health care.

The faculty believe that practice experiences for master's level nursing students provide opportunities to: act as change agents to improve health care outcomes; create, collaborate, and lead interprofessional teams; develop and test innovative solutions to clinical problems; translate evidence into nursing practice; design evidence based teaching learning, experiences; and appreciate the need for lifelong learning. The practice experiences in the three MS nursing programs (MS in Informatics, MS in Nursing Leadership and Administration of Health Care Systems, and MS in Nursing Education) are designed to assist the student in developing expertise in their chosen specialty.

There are 247.5 practice experience hours working with a mentor in the MS Capstone course in each degree program (Nursing Leadership and Administration of Health Care Systems, Nursing Education, and Nursing Informatics). Additionally, students in the MS in Nursing Education program complete an additional 63 practice experience hours in Virtual Clinical Simulations in NUR 506 (Advanced Pharmacology) and NUR 507 (Advanced Physical Assessment).

The course instructor provides regular feedback throughout the practice experience. Successful completion of the practice experience is required to pass the nursing courses.

The agency where students complete their Capstone practice experience may require facility specific documentation and/or an affiliation agreement. Students must comply with all agency requirements and are responsible for any costs associated with additional documentation and/or an affiliation agreement.

Policies Specific to the Master of Science in Nursing

The Excelsior College Student Policy Handbook is your resource for understanding the academic and administrative policies that are important to your academic success. It includes a wide range of information from important federal policies, including your right to privacy, to grading policies and policies and procedures concerning refunds, withdrawals, and other administrative issues. It is your responsibility to be familiar with these policies.

Policies and procedures that apply specifically to the master's programs in nursing are listed on the following pages. File your Handbook with your other important academic papers and this program catalog for easy reference.

Admission

Admission to the Master of Science in nursing programs is open to applicants who meet the following criteria:

- ▶ hold an active and unencumbered RN license in the U.S., and
- ▶ have earned a baccalaureate degree in nursing from a regionally accredited college or university (or the foreign equivalent), or from a college or university whose baccalaureate degree program in nursing was approved by ACEN, CCNE, or CNEA at the time of attendance.

International Student Admission Requirements

For the master's programs, in addition to official transcripts, nursing candidates must demonstrate that they have an equivalent U.S. Registered Nurse (RN) licensure. To be eligible for admission, the applicant must be a graduate from an approved school of nursing in their country of education and hold a current, unencumbered nursing license (if licensed in multiple jurisdictions and/or countries, all licenses must be unencumbered). All nursing school transcripts and all licenses will be validated by primary source verification.

Detailed application information and instructions can be found in our application for admission.

English Language Proficiency Requirement

International candidates from non-English speaking countries must show evidence of sufficient English language proficiency through one of the following options:

1. Submission of TOEFL (Test of English as a Foreign Language) or IELTS (International English Language Testing System) taken within the last two years.
2. Successful completion of UExcel® ENGx111 English Composition exam or UExcel® ENGx110 College Writing exam.
3. Submission of evidence of the successful completion of at least 9 credit hours of academic work in courses delivered in English at an institution of higher education in the United States.

Repeating Courses

Graduate students may repeat an Excelsior College course twice, for a maximum of three attempts. Failure on the third attempt will lead to dismissal from the School of Nursing.

Grades Awarded

Graduate students are required to have a 3.0 grade point average to graduate from the programs. Students receiving a passing grade who wish to raise their grade are allowed to do so. A final course grade of D or lower does not meet degree requirements. All grades for repeated courses will be listed on the My Academic Plan document and transcript. The original course grade will be flagged with a symbol designating it as a repeated course. The highest grade will be calculated into the GPA.

Time Limit

The Master of Science in nursing programs are designed to be completed with full-time or part-time study. Students can complete the degree at their own pace, however, students in the MS in nursing programs are required to complete all degree requirements within a seven-year period. This time limit is cumulative if enrollment is not continuous. **Those who do not complete the program within this time may be subject to dismissal.** If a student withdraws from the School of Nursing and re-enrolls at a later date, a five-year age limit on nursing credits will be in effect.

Technical Standards for MS Programs

Technical standards are the required and essential abilities that an individual in the MS programs must

effectively demonstrate in selected courses as an Excelsior College nursing degree student.

The components of the MS programs test a student's application of the nursing process and technical components for nursing practice. In addition, students must possess sufficient intellectual abilities and emotional health required for safe and effective practice. Therefore, the nursing student must possess sufficient skills for the following:

- ▶ Perform a physical examination on another person, including the skills of: observation/inspection, palpation, auscultation, and percussion.
- ▶ See, hear, smell, touch, and detect subtle changes in color.
- ▶ Perform parts of a physical examination in an online simulation experience, including sufficient hearing, and vision and manual dexterity for an online experience.
- ▶ Navigate in a community setting. The practice experience requires the student to travel within the community, and interact with clients and staff in a community agency. Must be able to provide own means of transportation, if needed.
- ▶ Communicate (verbally and in writing) with English-speaking clients and/or family members/significant others as well as members of the health care team, including nurses, physicians, support staff, and faculty.
- ▶ Read and understand documents written in English.
- ▶ Solve problems involving measurement, calculation, reasoning, analysis, and synthesis.
- ▶ Demonstrate good judgment, use of intellectual abilities, and development of effective relationships with clients and other health care professionals.

Course Waiver

Up to 16 graduate-level credits from an accredited college or university may be applied toward course waivers in the MS in nursing program. Grades received in previous courses submitted for waiver consideration must carry a grade of B or better, and coursework must not be more than five years old at the time of the student's application to the programs. The Capstone course may not be waived. The Graduate Waiver Committee

will compare content from the course the student has taken at another college to the Excelsior College course. There must be agreement with all major content areas for a waiver to be granted. In some cases, more than one prior course will be used to waive one of the MS courses. Official transcripts from the graduate school the student attended should be sent to the Excelsior College Office of Registration and Records. Students should send additional supportive descriptive materials such as syllabi or course outlines that address the content of the course the student completed.

Excelsior College refers to the *Accredited Institutions of Postsecondary Education* manual published for the Council for Higher Education Accreditation (CHEA) to verify the accreditation status of all postsecondary institutions.

Credit reported on a pass/fail or standard score system will not be accepted into the graduate program without written verification from the issuing institution that the course was passed with the equivalent of a B grade or better. Any course accepted for waiver will not be calculated into the GPA.



Master of Science in Nursing Leadership and Administration of Health Care Systems

38
CREDITS

PHASE I	CREDIT HOURS
► Graduate Nursing Core	
NUR 501 Transformational Nursing: Innovation, Inquiry, and Scholarship	3
NUR 502 Theoretical Foundations of Nursing Practice	3
NUR 513 Research and Evidence-Based Practice	4
NUR 533 Policy, Ethics, and Population Health	4
► Cognate Courses	
PBH 604 Epidemiology	3
Graduate Elective	3
TOTAL PHASE I CREDITS	20
PHASE II: NURSING LEADERSHIP AND ADMINISTRATION COMPONENT	CREDIT HOURS
NUR 615 Management of Clinical Systems	3
NUR 625 Management of Fiscal and Operational Systems	3
NUR 635 Leadership in Organizational Systems	3
NUR 680 Management Information for Decision Support	3
TOTAL CREDITS FOR PHASE II	12
PHASE III	CREDIT HOURS
NUR 646 The Nursing Leadership and Administration Capstone	6
TOTAL CREDITS FOR PHASE III	6
TOTAL DEGREE CREDITS REQUIRED	38

MASTER OF SCIENCE IN NURSING LEADERSHIP AND ADMINISTRATION OF HEALTH CARE SYSTEMS

The Master of Science in Nursing Leadership and Administration of Health Care Systems consists of 38 required credits. The curriculum is organized into three phases: the graduate nursing core and cognate courses, the nursing leadership courses, and the Capstone course. Students are introduced to the master's curriculum by taking courses within the nursing core and cognate component.

The graduate nursing core contains content that is foundational to the development of specialty knowledge. Courses within the core cover content areas such as health care economics, role of theory in practice, policy development and implementation, research process, and human diversity. The graduate nursing core consists of four courses: **Theoretical Foundations of Nursing Practice, Transformational Nursing: Innovation, Inquiry, and Scholarship, Research and Evidence-Based Practice, and Policy, Ethics, and Population Health**. Students successfully complete all the nursing core courses prior to beginning the nursing leadership courses.

The Nursing Leadership and Administration of Health Care Systems component of the curriculum focuses specifically on the knowledge and skills required to implement a leadership role in clinical systems. Content covering areas such as finance, workforce management, leadership role, organizational culture and change, and strategic initiatives are included in the four courses that make up the nursing leadership management component. This component consists of the following courses: **Management of Clinical Systems, Management of Fiscal and Operational Systems, Leadership of Organizational Systems, and Management Information for Decision Support**.

The 6-credit Capstone course begins after the successful completion of Phase I and II courses. The Capstone course has three components: an administrative project, an online course, and a project presentation. This experience focuses on knowledge synthesis and role development. At the completion of this curriculum, students are prepared to function in the role of leader or manager across organizational systems.

Requirements for Nursing Leadership and Administration of Health Care Systems

PHASE I

Graduate Nursing Core: 14 credits

NUR 501 Transformational Nursing: Innovation, Inquiry, and Scholarship 3 credits

Prerequisite: Active and unencumbered RN license.

This course explores how nursing may be transformed. The ways of knowing set a foundation for knowledge acquisition and competencies for master's-prepared nurses. The need for nurses to be innovators, through the application of inquiry and scholarship, are discussed in relation to such topics as leadership, change, and power. Theory-based and scientific competencies are examined as they relate to specializations in nursing. A spirit of inquiry, combined with creativity, curiosity, and the translation of evidence, is explored through critical conversations that support interprofessional collaboration and professional nursing roles in a dynamic healthcare environment.

Delivery: 8-week online course

NUR 502 Theoretical Foundations of Nursing Practice 3 credits

Prerequisite: Active and unencumbered RN license.

Theoretical Foundations of Nursing Practice focuses on the exploration of nursing knowledge development to include philosophy, theories, models, and concepts that have been designed to guide client care and research initiatives and to inform nursing practice. It provides approaches to analyze and critique a variety of theories in nursing and related fields.

Delivery: 8-week online course

NUR 513 Research and Evidence-Based Practice 4 credits

Prerequisites: Active and unencumbered RN license.

Undergraduate research and statistics are highly recommended. Statistics is a pre-/corequisite for students enrolled in the RN to MS program.

Research and Evidence-Based Practice focuses on the research process and the analysis and evaluation of research to integrate the best evidence into practice. Emphasis is on the identification of generic and discipline-specific health care issues, synthesis of evidence, and translation of research to support and inform practice innovations.

Delivery: 15-week online course

NUR 533 Policy, Ethics, and Population Health 4 credits

Prerequisite: Active and unencumbered RN license.

This course examines public policy, political ideology, and ethics as they shape health policy across populations. Political ideology, social and health policy are considered within the lens of population based health and reducing health disparities. The role of the master's-prepared nurse lead and advocate within the public policy arena is explored and discussed. Contemporary issues in health policy viewed from the perspective of ethics and the social and material determinants of health are considered. A primary focus of the course is consideration and development of the knowledge and skills that the master's prepared nurse needs to be a change agent in health policy.

Delivery: 8-week online course

Cognate courses: 6 credits

PBH 604 Epidemiology 3 credits

Prerequisite: None.

The science of Epidemiology is essential in planning disease prevention interventions, developing an understanding of disease etiology, identifying trends in morbidity and mortality, and providing a basis for the development of public health policy. This course will serve as an introduction to the core concepts and methods of epidemiology. Students will explore factors related to the etiology and distribution of illness in populations including exposure, transmission, and prevention. Methodologies used in surveillance techniques will also be introduced and explored.

Delivery: 8-week online course

Graduate Elective 3 credits

Prerequisite: None.

In order to meet the required number of program credits, 3 graduate-level elective credits must be taken. These may be completed within the graduate program or transferred from other graduate programs if they are deemed eligible for credit in the Master of Science in nursing program. Advisor approval is required when choosing an elective course.

PHASE II

Nursing Leadership and Administration of Health Care Systems Component: 12 credits

The leadership and administration component consists of four online courses totaling 12 credits. The courses that make up this component require synthesis of knowledge and application from the nursing core courses. Therefore students should complete all of the Phase I courses before beginning the leadership and administration (Phase II) courses.

NUR 615 Management of Clinical Systems 3 credits

Prerequisites: Active and unencumbered RN license, all Phase I courses.

Management of Clinical Systems focuses on the application of management principles, processes, techniques, and tools to shape a supportive environment of care and promote continuous improvement in clinical care systems.

Delivery: 8-week online course

NUR 625 Management of Fiscal and Operational Systems 3 credits

Prerequisites: Active and unencumbered RN license, all Phase I courses.

Management of Fiscal and Operational Systems focuses on the application of management principles to design cost-effective clinical systems and achieve optimal resource use across the health care enterprise.

Delivery: 8-week online course

NUR 635 Leadership in Organizational Systems 3 credits

Prerequisites: Active and unencumbered RN license, all Phase I courses.

Leadership in Organizational Systems focuses on critical examination of leadership styles, strategies, and competencies of the nurse executive in order to successfully manage the health care enterprise. It emphasizes

leadership skills for strategic planning, enhancing team performance and interdisciplinary collaboration, and creating a culture of quality performance.

Delivery: 8-week online course

NUR 680 Management Information for Decision Support

3 credits

Prerequisites: Active and unencumbered RN license, all Phase I courses.

This course focuses on the identification, acquisition, analysis, interpretation, and application of data, databases, and decision-making strategies for health care. It emphasizes decision-support systems concepts, as well as methodologies and technologies, and includes content on model management, knowledge management, and strategies to consider when selecting decision-support systems.

Delivery: 8-week online course

PHASE III

Capstone course: 6 credits

NUR 646 The Nursing Leadership and Administration Capstone

6 credits

Prerequisites: Active and unencumbered RN license, all Phase I, Cognate, and Phase II courses.

The graduate nursing capstone is a culminating experience designed to provide learners with an opportunity to apply knowledge and skills acquired throughout the program of study focusing on the competencies of the graduate level nurse. This 6-credit course consists of several integrated components: a 247.5-hour practice experience, discussion, reflective journal, scholarly paper, and project presentation. Assessment of the learner's attainment of program competencies is built into these components.

This requirement must be completed through Excelsior College.

Delivery: 15-week online course



Master of Science in Nursing Education

38
CREDITS

PHASE I	CREDIT HOURS
► Graduate Nursing Core	
NUR 501 Transformational Nursing: Innovation, Inquiry, and Scholarship	3
NUR 502 Theoretical Foundations of Nursing Practice	3
NUR 513 Research and Evidence-Based Practice	4
NUR 533 Policy, Ethics, and Population Health	4
TOTAL PHASE I CREDITS	14
PHASE II: NURSING EDUCATION COMPONENT	CREDIT HOURS
NUR 505 Advanced Pathophysiology	3
NUR 506 Advanced Pharmacology	3
NUR 507 Advanced Physical Assessment	3
NUR 653 Designing a Learning Environment	3
NUR 661 Program and Curriculum Development in Nursing Education	3
NUR 662 Assessment and Evaluation in Nursing Education	3
TOTAL CREDITS FOR PHASE II	18
PHASE III	CREDIT HOURS
NUR 676 The Nursing Education Capstone	6
TOTAL CREDITS FOR PHASE III	6
TOTAL DEGREE CREDITS REQUIRED	38

MASTER OF SCIENCE IN NURSING EDUCATION

The Master of Science in Nursing Education consists of 38 required credits. The curriculum is organized into three phases: the graduate nursing core, the nursing education courses, and the Capstone.

The nursing core contains content that is foundational to the development of specialty knowledge. Courses within the core cover content areas such as health care economics, role of theory in practice, policy development and implementation, research process, and human diversity. The nursing core consists of four courses: **Theoretical Foundations of Nursing Practice; Transformational Nursing: Innovation, Inquiry, and Scholarship; Research and Evidence-Based Practice; Health Care Delivery Systems: and Policy, Ethics, and Population Health.**

The Nursing Education component of the curriculum focuses on the knowledge and skills required to implement the role of nurse educator in an academic or service setting. Content covering learning theories, teaching strategies, curriculum development, evaluation of learning outcomes, and utilization of technologies to support teaching are included in the Phase II nursing education courses. This component consists of the following courses: **Designing a Learning Environment; Program and Curriculum Development in Nursing Education; and Assessment and Evaluation in Nursing Education.** In addition, students receive preparation in graduate level clinical content including courses in advanced physical assessment, pathophysiology, and pharmacology.

The 6-credit Capstone course begins after the successful completion of Phases I and II. It includes an educational project, an online course, and a project presentation. This experience focuses on knowledge synthesis and role development. At the completion of this curriculum, students are prepared to function in the role of nurse educator in a variety of educational settings.

Requirements for Nursing Education

PHASE I

Graduate Nursing Core: 14 credits

NUR 501 Transformational Nursing: Innovation, Inquiry, and Scholarship 3 credits
Prerequisite: Active and unencumbered RN license.
This course explores how nursing may be transformed. The ways of knowing set a foundation for knowledge acquisition and competencies for master's-prepared nurses. The need for nurses to be innovators, through the application of inquiry and scholarship, are discussed in relation to such topics as leadership, change, and power. Theory-based and scientific competencies are examined as they relate to specializations in nursing. A spirit of inquiry, combined with creativity, curiosity, and the translation of evidence, is explored through critical conversations that support interprofessional collaboration and professional nursing roles in a dynamic healthcare environment.
Delivery: 8-week online course

NUR 502 Theoretical Foundations of Nursing Practice 3 credits
Prerequisite: Active RN license
Theoretical Foundations of Nursing Practice focuses on the exploration of nursing knowledge development to

include philosophy, theories, models, and concepts that have been designed to guide nursing practice. It provides approaches to analyze and critique a variety of theories in nursing and related fields.
Delivery: 8-week online course

NUR 513 Research and Evidence-Based Practice 4 credits
Prerequisites: Active and unencumbered RN license. Undergraduate research and statistics are highly recommended. Statistics is a pre-/corequisite for students enrolled in the RN to MS program.
Research and Evidenced-Based Practice focuses on the research process and the analysis and evaluation of research to integrate the best evidence into practice. Emphasis is on the identification of generic and discipline-specific health care issues, synthesis of client care and research initiatives to inform evidence, and translation of research to support and inform practice innovations.
Delivery: 15-week online course

NUR 533 Policy, Ethics, and Population Health 4 credits
Prerequisite: Active and unencumbered RN license.
This course examines public policy, political ideology, and ethics as they shape health policy across populations. Political ideology, social and health policy are considered within the lens of population based health and reducing health disparities. The role of the master's-prepared nurse

is to lead and advocate within the public policy arena is explored and discussed. Contemporary issues in health policy viewed from the perspective of ethics and the social and material determinants of health are considered. A primary focus of the course is consideration and development of the knowledge and skills that the master's prepared nurse needs to be a change agent in health policy.

Delivery: 8-week online course

PHASE II

Nursing Education Component: 18 credits

NUR 505 Advanced Pathophysiology 3 credits

Prerequisite: All Phase I courses.

This course examines the concepts of pathophysiology to guide advanced health care professionals in the diagnosis and management of disease. The focus of this course is to investigate both common and unusual disorders in individuals in primary care settings across the lifespan. In addition to etiology, pathogenesis, and disease evolution the influence of predisposing factors, including environmental, geographic, genetic, developmental, and global factors on disease manifestation will be presented. Students will also examine the impact of disease conditions within the context of a person's life through case study analyses.

Delivery: 8-week online course

NUR 506 Advanced Pharmacology 3 credits

Prerequisite: None.

This course provides an advanced-level pathophysiological approach to understanding pharmacological agents and their use across the lifespan. The mechanism of drug action provides a foundation for understanding applications and adverse effects of these agents. Emphasis will be placed on the fundamentals of pharmacokinetics and pharmacodynamics as they relate to clinical practice. This course includes 9 hours of practice experience hours using virtual clinical simulation.

Delivery: 8-week online course

NUR 507 Advanced Physical Assessment 3 credits

Prerequisite: Active and unencumbered RN license.

This course focuses on the advanced comprehensive assessment of individuals. It builds on the students' knowledge and skills and provides a foundation for the advanced practice nurse to evaluate the health of individuals and provide health promotion interventions.

The interactions of developmental, biopsychosocial, and socio-cultural contexts resulting in health effects for individuals provide the structure of the course. Students obtain the practice skills necessary for advanced communication (i.e., clinical interviewing, focused history taking), biopsychosocial and physical assessment, critical diagnostic reasoning, differential diagnosis, and clinical decision-making through course readings, dialog, discussions, videos, simulations, and practical examinations. This course includes 45 hours of practice experience hours using virtual clinical simulation.

Delivery: 15-week online course

NUR 653 Designing a Learning Environment 3 credits

Prerequisites: Active and unencumbered RN license, all Phase I courses.

This course focuses on the creation of teaching-learning environments and the integration of the role of faculty/educator, uniqueness of the learner, the setting and context within which the learning occurs, the teaching-learning strategies used to achieve learning outcomes, and evaluation of the effectiveness of this process.

Formerly NUR 650 Designing a Student Learning Environment.

Delivery: 8-week online course

NUR 661 Program and Curriculum Development in Nursing Education 3 credits

Prerequisites: Active and unencumbered RN license, all Phase I courses.

This course focuses on curriculum and syllabus/program development, including theoretical frameworks and design, philosophical foundations, and selection of learning experiences to achieve outcomes.

Delivery: 8-week online course

NUR 662 Assessment and Evaluation in Nursing Education 3 credits

Prerequisite: Active and unencumbered RN license, all Phase I courses.

This course is designed to introduce the student to the evaluation process, including test construction, clinical performance assessment, program evaluation, and strategies for evaluating learning outcomes.

Delivery: 8-week online course

PHASE III

Nursing Education Capstone: 6 credits

NUR 676 The Nursing Education Capstone 6 credits

Prerequisites: Active and unencumbered RN license, all Phase I and Phase II courses.

The graduate nursing capstone is a culminating experience designed to provide learners with an opportunity to apply knowledge and skills acquired throughout the program of study focusing on the competencies of the graduate level nurse. This 6-credit course consists of several integrated components: project expertise, discussion, reflective journal, scholarly paper, a 247.5 practice experience hours, and project presentation. Assessment of the learner's attainment of program competencies is built into these components.

This requirement must be completed through Excelsior College.

Delivery: 15-week online course



Master of Science in Nursing Informatics

36
CREDITS

PHASE I	CREDIT HOURS
► Graduate Nursing Core	
NUR 501 Transformational Nursing: Innovation, Inquiry, and Scholarship	3
NUR 502 Theoretical Foundations of Nursing Practice	3
NUR 513 Research and Evidence-Based Practice	4
NUR 533 Policy, Ethics, and Population Health	4
► Cognate Courses	
PBH 604 Epidemiology	3
Graduate Elective	3
TOTAL PHASE I CREDITS	20
PHASE II: NURSING INFORMATICS COMPONENT	CREDIT HOURS
NUR 521 Data, Information and Knowledge	3
NUR 551 System Life Cycle	4
NUR 680 Management Information for Decision Support	3
TOTAL CREDITS FOR PHASE II	10
PHASE III	CREDIT HOURS
NUR 686 The Nursing Informatics Capstone	6
TOTAL CREDITS FOR PHASE III	6
TOTAL DEGREE CREDITS REQUIRED	36

MASTER OF SCIENCE IN NURSING INFORMATICS

The Master of Science in Nursing Informatics consists of 36 required credits. The curriculum is organized into three phases: the graduate nursing core and cognate courses, the nursing informatics courses, and the Nursing Informatics Capstone. The nursing core contains content that is foundational to the development of specialty knowledge. Courses within the core cover content areas such as health care economics, role of theory in practice, policy development and implementation, research process, and human diversity. The nursing core consists of four courses: **Theoretical Foundations of Nursing Practice; Transformational Nursing: Innovation, Inquiry, and Scholarship; Research and Evidence-Based Practice; and Policy, Ethics, and Population Health.**

The nursing informatics component of the curriculum focuses on the knowledge and skills required to implement the role of nurse informaticist in a variety of health care settings. Content covering how data and information can be used to create knowledge, concepts of database management in responding to a health care problem, assessment of information requirements of a system as it relates to client care and organizational operations, and selection and application of a decision-making model are included in the three courses that make up the nursing informatics specialty component. This component consists of the following courses: **Data, Information, and Knowledge; System Life Cycle; and Management Information for Decision Support.**

The 6-credit **Nursing Informatics Capstone** begins after the successful completion of Phases I and II. This course has three components: an informatics project management experience, an online course, and a project presentation. It is designed to provide students with the opportunity to apply knowledge and competencies required throughout the program of study to actual and simulated information technology situations in health care. At the completion of the curriculum, students are prepared to function in the role of nurse informaticist in a variety of health care settings.

Requirements for Nursing Informatics

PHASE I

Graduate Nursing Core: 14 credits

NUR 501 Transformational Nursing: Innovation, Inquiry, and Scholarship 3 credits

Prerequisite: Active and unencumbered RN license.

This course explores how nursing may be transformed. The ways of knowing set a foundation for knowledge acquisition and competencies for master's-prepared nurses. The need for nurses to be innovators, through the application of inquiry and scholarship, are discussed in relation to such topics as leadership, change, and power. Theory-based and scientific competencies are examined as they relate to specializations in nursing. A spirit of inquiry, combined with creativity, curiosity, and the translation of evidence, is explored through critical conversations that support interprofessional collaboration and professional nursing roles in a dynamic healthcare environment.

Delivery: 8-week online course

NUR 502 Theoretical Foundations of Nursing Practice 3 credits

Prerequisite: Active and unencumbered RN license.

Theoretical Foundations of Nursing Practice focuses on the exploration of nursing knowledge development to include philosophy, theories, models, and concepts that have been designed to guide nursing practice. It provides approaches to analyze and critique a variety of theories in nursing and related fields.

Delivery: 8-week online course

NUR 513 Research and Evidence-Based Practice 4 credits

Prerequisites: Active and unencumbered RN license.

Undergraduate research and statistics are highly recommended. Statistics is a pre-/corequisite for students enrolled in the RN to MS program.

Research and Evidenced-Based Practice focuses on the research process and the analysis and evaluation of research to integrate the best evidence into practice. Emphasis is on the identification of generic and discipline-specific health care issues, synthesis of client care and research initiatives to inform evidence, and translation of research to support and inform practice innovations.

Delivery: 15-week online course

NUR 533 Policy, Ethics, and Population Health 4 credits

Prerequisite: Active and unencumbered RN license.

This course examines public policy, political ideology, and ethics as they shape health policy across populations. Political ideology, social and health policy are considered within the lens of population based health and reducing health disparities. The role of the master's-prepared nurse is to lead and advocate within the public policy arena is explored and discussed. Contemporary issues in health policy viewed from the perspective of ethics and the social and material determinants of health are considered. A primary focus of the course is consideration and development of the knowledge and skills that the master's prepared nurse needs to be a change agent in health policy.

Delivery: 8-week online course

Cognate courses: 6 credits

PBH 604 Epidemiology 3 credits

Prerequisite: None.

The science of Epidemiology is essential in planning disease prevention interventions, developing an understanding of disease etiology, identifying trends in morbidity and mortality, and providing a basis for the development of public health policy. This course will serve as an introduction to the core concepts and methods of epidemiology. Students will explore factors related to the etiology and distribution of illness in populations including exposure, transmission, and prevention. Methodologies used in surveillance techniques will also be introduced and explored.

Delivery: 8-week online course

Graduate Elective 3 credits

Prerequisite: None.

In order to meet the required number of program credits, 3 graduate-level elective credits must be taken. These may be completed within the graduate program or transferred from other graduate programs if they are deemed eligible for credit in the Master of Science in nursing program. Advisor approval is required when choosing an elective se.

PHASE II

Nursing Informatics Component: 10 credits

The nursing informatics component consists of three online courses totaling 10 credits. The courses that make up this component require synthesis of knowledge and application from the nursing core courses. Therefore, students must complete all Phase I courses before beginning the nursing informatics courses.

NUR 521 Data, Information, and Knowledge 3 credits

Prerequisites: Active and unencumbered RN license, all Phase I courses.

This course focuses on concepts involved in the design of a database specifically the usage, management, and evaluation of data through the application of basic concepts of database design, as well as knowledge of data representation, data sets, and data integrity. Through the use of databases, critical discernment and reasoning are applied in composing queries and reports to assess healthcare problem prominence and identify solutions. Through course readings, incorporation of the ANA Nursing Informatics: Scope and Standards of Practice, discussion boards, and an individual project, students will build upon basic knowledge of data information, the data knowledge continuum, security of databases, and develop an understanding of large scale information system environments in order to understand risk, improve care delivery, and provide guidance in the integration of technology in nursing practice.

Delivery: 8-week online course

NUR 551 System Life Cycle 4 credits

Prerequisites: Active and unencumbered RN license, all Phase I courses.

This course focuses on a structured approach to the selection and implementation of an information system. This structured approach is called the information system development life cycle and the course incorporates the five phases of the life cycle: planning, analysis, design, implementation, and evaluation.

Delivery: 15-week online course

NUR 680 Management Information for Decision Support

3 credits

Prerequisites: Active and unencumbered RN license, all Phase I courses

This course focuses on the identification, acquisition, analysis, interpretation, and application of data, databases, and decision-making strategies for health care. It emphasizes decision support systems concepts, methodologies, and technologies, and includes content on model management, knowledge management, and strategies to consider when selecting decision-support systems.

Delivery: 8-week online course

PHASE III

Nursing Informatics Capstone: 6 credits

NUR 686 The Nursing Informatics Capstone 6 credits

Prerequisites: Active and unencumbered RN license. Completion of all Phase I, Cognate, and Phase II courses.

The graduate nursing capstone is a culminating experience designed to provide learners with an opportunity to apply knowledge and skills acquired throughout the program of study focusing on the competencies of the graduate level nurse. This 6-credit course consists of several integrated components: discussion, reflective journal, scholarly paper, 247.5 practice experience hours, and project presentation. Assessment of the learner's attainment of program competencies is built into these components.

This requirement must be completed through Excelsior College.

Delivery: 15-week online course



RN to Master of Science in Nursing Leadership and Administration of Health Care Systems

**144
CREDITS**

BACHELOR'S-LEVEL GENERAL EDUCATION COMPONENT	CREDIT HOURS
► Information Literacy ^①	1
► Written English ^②	6
► Humanities	
Humanities	9
Ethics Core ^③	3
► Social Sciences	
Social Sciences/History	9
Psychology Core Requirement	3
Sociology Core Requirement	3
► Natural Sciences	
Human Anatomy and Physiology Core	4
Microbiology Core	3
Sciences Supportive of Nursing Core	2
Statistics Core ^④	3
Natural Sciences/Mathematics	3
► Arts & Sciences Electives	12
TOTAL CREDITS FOR GENERAL EDUCATION COMPONENT	61
PHASE I: BS/GRADUATE NURSING CORE	CREDIT HOURS
30 semester hours of nursing credit granted for prior learning validated by nursing education and successful completion of the NCLEX-RN®. All requirements below are online courses.	30
NUR 448 Community Health Nursing: Caring for the Public's Health	4
NUR 456 Leadership and Management in Nursing	4
NUR 501 Transformational Nursing: Innovation, Inquiry, and Scholarship	3
NUR 502 Theoretical Foundations of Nursing Practice	3
NUR 507 Advanced Physical Assessment	3
NUR 513 Research and Evidence-Based Practice ^④	4
NUR 533 Policy, Ethics, and Population Health	4
NUR 462 Nursing Capstone ^{③⑤}	4
TOTAL PHASE I CREDITS	59
TOTAL DEGREE CREDITS REQUIRED FOR BACHELOR OF SCIENCE IN NURSING	120
COGNATE COURSES	CREDIT HOURS
PBH 604 Epidemiology	3
Graduate Elective	3
PHASE II	
NUR 615 Management of Clinical Systems	3
NUR 625 Management of Fiscal and Operations Systems	3
NUR 635 Leadership in Organizational Systems	3
NUR 680 Management Information for Decision Support	3
PHASE III	
NUR 646 The Nursing Leadership and Administration Capstone	6
TOTAL CREDITS MASTER'S COMPONENT	24
TOTAL DEGREE CREDITS REQUIRED	144

① This requirement must be completed within the first 13 Excelsior College credits attempted.

② The Written English Requirement is a prerequisite to all nursing courses. The first 3.0 credits in written English must be completed within the first 9 EC credits attempted.

③ Ethics is a prerequisite for the NUR 462 Nursing Capstone course.

④ Statistics is a pre-/co-requisite for NUR 513.

⑤ Students are eligible for this requirement when they have no more than 6 credits still needed in general education, when the ethics requirement is complete, and when all nursing courses above are complete.



RN to Master of Science in Nursing Education

**144
CREDITS**

BACHELOR'S-LEVEL GENERAL EDUCATION COMPONENT		CREDIT HOURS
► Information Literacy ^①		1
► Written English ^②		6
► Humanities		
Humanities		9
Ethics Core ^③		3
► Social Sciences		
Social Sciences/History		9
Psychology Core Requirement		3
Sociology Core Requirement		3
► Natural Sciences		
Human Anatomy and Physiology Core		4
Microbiology Core		3
Sciences Supportive of Nursing Core		2
Statistics Core ^④		3
Natural Sciences/Mathematics		3
► Arts & Sciences Electives		12
TOTAL CREDITS FOR GENERAL EDUCATION COMPONENT		61
PHASE I: BS/GRADUATE NURSING CORE		CREDIT HOURS
30 semester hours of nursing credit granted for prior learning validated by nursing education and successful completion of the NCLEX-RN®. All requirements below are online courses.		30
NUR 448 Community Health Nursing: Caring for the Public's Health		4
NUR 456 Leadership and Management in Nursing		4
NUR 501 Transformational Nursing: Innovation, Inquiry, and Scholarship		3
NUR 502 Theoretical Foundations of Nursing Practice		3
NUR 507 Advanced Physical Assessment		3
NUR 513 Research and Evidence-Based Practice ^④		4
NUR 533 Policy, Ethics, and Population Health		4
NUR 462 Nursing Capstone ^{③⑤}		4
TOTAL PHASE I CREDITS		59
TOTAL DEGREE CREDITS REQUIRED FOR BACHELOR OF SCIENCE IN NURSING		120
COGNATE COURSE		CREDIT HOURS
Graduate Elective		3
PHASE II		
NUR 505 Advanced Pathophysiology		3
NUR 506 Advanced Pharmacology		3
NUR 653 Designing a Learning Environment		3
NUR 661 Program and Curriculum Development in Nursing Education		3
NUR 662 Assessment and Evaluation in Nursing Education		3
PHASE III		
NUR 676 The Nursing Education Capstone		6
TOTAL CREDITS MASTER'S COMPONENT		24
TOTAL DEGREE CREDITS REQUIRED		144

① This requirement must be completed within the first 13 Excelsior College credits attempted.

② The Written English Requirement is a prerequisite to all nursing courses. The first 3.0 credits in written English must be completed within the first 9 EC credits attempted.

③ Ethics is a prerequisite for the NUR 462 Nursing Capstone course.

④ Statistics is a pre-/co-requisite for NUR 513.

⑤ Students are eligible for this requirement when they have no more than 6 credits still needed in general education, when the ethics requirement is complete, and when all nursing courses above are complete.



RN to Master of Science in Nursing Informatics

**142
CREDITS**

BACHELOR'S-LEVEL GENERAL EDUCATION COMPONENT	CREDIT HOURS
▶ Information Literacy ^①	1
▶ Written English ^②	6
▶ Humanities	
Humanities	9
Ethics Core ^③	3
▶ Social Sciences	
Social Sciences/History	9
Psychology Core Requirement	3
Sociology Core Requirement	3
▶ Natural Sciences	
Human Anatomy and Physiology Core	4
Microbiology Core	3
Sciences Supportive of Nursing Core	2
Statistics Core ^④	3
Natural Sciences/Mathematics	3
▶ Arts & Sciences Electives	12
TOTAL CREDITS FOR GENERAL EDUCATION COMPONENT	61
PHASE I: BS/GRADUATE NURSING CORE	CREDIT HOURS
30 semester hours of nursing credit granted for prior learning validated by nursing education and successful completion of the NCLEX-RN®. All requirements below are online courses.	30
NUR 448 Community Health Nursing: Caring for the Public's Health	4
NUR 456 Leadership and Management in Nursing	4
NUR 501 Transformational Nursing: Innovation, Inquiry, and Scholarship	3
NUR 502 Theoretical Foundations of Nursing Practice	3
NUR 507 Advanced Physical Assessment	3
NUR 513 Research and Evidence-Based Practice ^④	4
NUR 533 Policy, Ethics, and Population Health	4
NUR 462 Nursing Capstone ^{③⑤}	4
TOTAL PHASE I CREDITS	59
TOTAL DEGREE CREDITS REQUIRED FOR BACHELOR OF SCIENCE IN NURSING	120
COGNATE COURSE	CREDIT HOURS
PBH 604 Epidemiology	3
Graduate Elective	3
PHASE II	
NUR 521 Data, Information and Knowledge	3
NUR 551 System Life Cycle	4
NUR 680 Management Information For Decision Support	3
PHASE III	
NUR 686 The Nursing Informatics Capstone	6
TOTAL CREDITS MASTER'S COMPONENT	22
TOTAL DEGREE CREDITS REQUIRED	142

① This requirement must be completed within the first 13 Excelsior College credits attempted.

② The Written English Requirement is a prerequisite to all nursing courses. The first 3 credits in written English must be completed within the first 9 EC credits attempted.

③ Ethics is a prerequisite for the NUR 462 Nursing Capstone course.

④ Statistics is a pre-/co-requisite for NUR 513.

⑤ Students are eligible for this requirement when they have no more than 6 credits still needed in general education, when the ethics requirement is complete, and when all nursing courses above are complete.

DUAL DEGREE PROGRAMS IN NURSING

RN TO MASTER OF SCIENCE IN NURSING PROGRAMS

(Nursing Leadership and Administration of Health Care Systems, Nursing Education and Nursing Informatics)

Programs in chart format on page 52, page 53 and page 54.

The RN to Master of Science (RN to MS) nursing programs are designed to allow registered nurses to earn a Bachelor of Science in nursing, as well as a **Master of Science in Nursing Leadership and Administration of Health Care Systems**, **Master of Science in Nursing Education** or a **Master of Science in Nursing Informatics**. With this option, students take graduate-level courses that replace some of the undergraduate requirements. The charts on [page 52](#), [page 53](#) and [page 54](#) offer a visual representation of the requirements for the three degrees of the RN to MS in nursing programs.

Policies Specific to the RN to MS in Nursing Programs

The Excelsior College Student Policy Handbook is your resource for understanding the academic and administrative policies that are important to your academic success. It includes a wide range of information from important federal policies, including your right to privacy, to grading policies and policies and procedures concerning refunds, withdrawals, and other administrative issues. It is your responsibility to be familiar with these policies.

Additional policies and procedures that apply specifically to the RN to MS in nursing programs are listed on the following pages. File your Student Policy Handbook with your other important academic papers and this program catalog for easy reference.

Admission

The RN to MS in nursing programs are designed for registered nurses. The programs are open to applicants who meet the following admission criteria:

- ▶ hold an active and unencumbered RN license in the U.S., and
- ▶ have earned an associate degree or diploma in nursing from New York State (NYSED) approved program, or a program with specialty accreditation, or a regionally accredited college.

Students who have an RN license and who have earned an associate degree in nursing and a bachelor's degree in a field other than nursing may also apply to the RN-MS in nursing programs.

Program Requirements

Enrolled students are required to maintain an active, unencumbered RN license. The College utilizes the Nursys E Notify service as our database management system. Students must provide the College with the following information for submission to Nursys E Notify:

- ▶ RN license number
- ▶ State of licensure
- ▶ Last four digits of your SSN
- ▶ Year of birth

Students whose license becomes inactive or encumbered during the program will not be permitted to register for a nursing course until the license is reactivated and unencumbered.

International Student Admission

In addition to official transcripts, nursing candidates must demonstrate that they have an equivalent U.S. Registered Nurse (RN) licensure. To be eligible for admission, the applicant must be a graduate from an approved school of nursing in their country of education and hold a current, unencumbered nursing license (if licensed in multiple jurisdictions and/or countries, all licenses must be unencumbered). All nursing school transcripts and all licenses will be validated by primary source verification.

International candidates must apply to the Commission on Graduate of Foreign Nursing Schools (CGFNS) New York Credential Verification Service (NYCVS) and the New York State Education Department (NYSED) to have their foreign nursing education evaluated and approved by the aforementioned organizations.

Detailed application information and instructions can be found in our application for admission.

English Language Proficiency Requirement

International candidates from non-English speaking countries must show evidence of sufficient English language proficiency through one of the following options:

Submission of TOEFL (Test of English as a Foreign Language) or IELTS (International English Language Testing System) taken within the last two years.

Successful completion of the UExcel® ENGx111 English Composition exam or the UExcel® ENGx110 College Writing exam.

Submission of evidence of the successful completion of at least 9 credit hours of academic work in courses delivered in English at an institution of higher education in the United States.

Time Limit

The RN to MS in nursing programs are designed to be completed with full-time or part-time study. Students can complete the degree at their own pace. Students are required to complete all degree requirements within a 12-year period. This time limit is cumulative if enrollment is not continuous. **Those who do not complete the program within this time may be subject to dismissal.** If a student withdraws from the School of Nursing and re-enrolls at a later date, a five-year age limit on nursing theory credits will be in effect.

Time Limit—General Education Component

With the exception of information literacy, there is no time limit on general education courses or examinations submitted for transfer credit in this degree program. Credits earned for which official transcripts are available will be evaluated regardless of when they were earned.

Time Limit—Undergraduate Nursing Component

Credit submitted from nursing examinations and nursing courses for purposes of meeting requirements for the nursing component of the degree need to have been earned within five years prior to the academic policy date in an Excelsior College nursing program. Please see [page 19](#) for guidelines on waiver of Excelsior College nursing theory requirements.

There is no time limit on the nursing component credits as long as students remain actively enrolled in an Excelsior College nursing program. Should enrollment lapse and you reenroll, you will lose credit for any nursing examinations taken more than five years prior to academic policy date. If you have waived any of the nursing requirements during a previous enrollment, you

will not automatically receive waiver of those requirements when reenrolling. The Excelsior College nursing faculty will review the courses again and you may lose the waiver, depending on the age of the course and current content requirements.

Technical Standards for RN-MS Programs

Technical standards are the required and essential abilities that an individual in the RN to MS programs must effectively demonstrate in selected courses as an Excelsior College nursing degree student.

The components of the RN to MS programs test a student's application of the nursing process and technical components for nursing practice. In addition, students must possess sufficient intellectual abilities and emotional health required for safe and effective practice. Therefore, the nursing student must possess sufficient skills for the following:

- ▶ Perform a physical examination on another person, including the skills of: observation/inspection, palpation, auscultation, and percussion.
- ▶ See, hear, smell, touch, and detect subtle changes in color.
- ▶ Perform parts of a physical examination in an online simulation experience, including sufficient hearing, and vision and manual dexterity for an online experience.
- ▶ Navigate in a community setting. The practice experience requires the student to travel within the community, and interact with clients and staff in a community agency. Must be able to provide own means of transportation, if needed.
- ▶ Communicate (verbally and in writing) with English-speaking clients and/or family members/significant others as well as members of the health care team, including nurses, physicians, support staff, and faculty.
- ▶ Read and understand documents written in English.
- ▶ Solve problems involving measurement, calculation, reasoning, analysis, and synthesis.
- ▶ Demonstrate good judgment, use of intellectual abilities, and development of effective relationships with clients and other health care professionals.

Completion of the Dual Degree Programs

The RN to MS dual degree programs allow students to earn both the BS in nursing and the MS in nursing more efficiently than completing the two programs separately.

The BS in nursing degree will be conferred upon completion of all general education and bachelor's component courses, including the undergraduate-level capstone. Students will then be able to continue seamlessly into the remaining graduate-level courses.

Minimum Academic Average—Graduate Courses

Graduate students are required to have a 3.0 grade point average to graduate from the program. The graduate grade point average is calculated separately from the undergraduate grade point average.

Graduate students receiving a passing grade who wish to raise their grade are allowed to do so. A final course grade of D or lower does not meet degree requirements. All grades for repeated courses will be listed on the My Academic Plan document and transcript. The original course grade will be flagged with a symbol designating it as a repeated course. The highest grade will be calculated into the GPA.

RN to MS in Nursing Requirements

The RN to MS in nursing programs require completion of 141–143 credits—61 general education credits and 81–83 nursing credits (depending on degree specialization).

You are subject to the degree requirements in effect at the time that your academic policy date is set or program/degree transfer (program transfer refers to change from one school to another; degree transfer refers to changing degrees within the same school). The faculty reserves the right to make changes in curricular requirements as necessary to reflect current professional practice. Changes may affect both enrolled and prospective students. It is your responsibility to keep informed of such changes. We make every effort to inform you of changes as they occur. Current information about degree requirements is posted on our website. Information about changes to degree requirements is also made available on our website.

General Education Component (61 credits)

See [page 9](#) to [page 10](#) in the undergraduate section of this catalog for detailed information about undergraduate general education requirements. The bachelor's degree-level requirements must be completed

before registering for any graduate-level courses.

Nursing Component (81 or 83 credits, depending on MS degree)

The nursing component of the RN to MS degrees includes bachelor's-level requirements and graduate-level requirements. Prerequisites for all of the nursing courses include all Written English requirements. Policies on repeating requirements and criteria for waiver of bachelor's requirements are listed on [page 19](#) of this catalog.

Bachelor's Phase Component

The bachelor's component covers knowledge and professional competencies equivalent to those expected of graduates of campus-based BS in nursing programs. Emphasis is placed on integration of nursing knowledge and related sciences in a variety of complex situations related to the nursing care of individuals, families, and communities with major health problems.

Students eligible for the RN to MS programs will be granted 30 semester hours of credits for prior learning that is validated by successful completion of the National Council Licensure Examination for Registered Nurses (NCLEX-RN®) and learning validated by prior education.

The requirements in the bachelor's component of the RN to MS programs that are common to the Bachelor of Science in nursing program are **NUR 456 Leadership and Management in Nursing**, **NUR 448 Community Health Nursing**, and **NUR 462 Nursing Capstone**.

RN to MS students complete five graduate-level online courses as part of their undergraduate requirements: **NUR 501**, **NUR 502**, **NUR 507**, **NUR 513**, and **NUR 533**.

Nursing courses from hospital diploma programs both in the United States and abroad are not eligible for transfer credit.

Contact your academic advisor for program planning assistance.

Distance education is as challenging as face-to-face instruction, if not more so. The nursing component of the dual degree program requires outstanding critical thinking skills and nursing judgment, along with a commitment to academic rigor.

Bachelor's Phase Requirements

(See the graduate degree program section, page 36, page 40 and page 44 for descriptions of the following requirements.)

- ▶ NUR 448 Community Health Nursing: Caring for the Public's Health (4 credits)
- ▶ NUR 456 Leadership and Management in Nursing^① (4 credits)
- ▶ NUR 501 Transformational Nursing: Innovation, Inquiry, and Scholarship (3 credits)
- ▶ NUR 502 Theoretical Foundations in Nursing Practice (3 credits)
- ▶ NUR 507 Advanced Physical Assessment (3 credits)
- ▶ NUR 513 Research and Evidence-Based Practice (4 credits)
- ▶ NUR 533 Policy, Ethics, and Population Health (4 credits)
- ▶ NUR 462 Nursing Capstone (4 credits)

Graduate-Level Phases

Students will earn the BS in nursing degree upon completion of all general education requirements and all eight of the Phase I courses (BS/graduate nursing core), including the baccalaureate-level capstone. These students will be able to continue seamlessly into the remaining master's component courses. See page 36 to page 46 for descriptions of required courses.

Practice Experience

Each component of the dual degree requires students engage in practice experiences. The focus of these practice experiences will change as students progress through the RN- MS program. At the baccalaureate level, the focus of practice experiences shift away from individual patient care to community as client, population based health, and the role of the RN in influencing health care delivery. They differ from the "clinical" experiences of pre-licensure nursing programs. Practice experiences for master's level nursing students provide opportunities to act as change agents to improve health care outcomes; create, collaborate, and lead interprofessional teams; develop and test

innovative solutions to clinical problems; translate evidence into nursing practice; design evidence based teaching learning, experiences; and appreciate the need for lifelong learning. The practice experiences in the three MS nursing programs (MS in Informatics, MS in Nursing Leadership and Administration of Health Care Systems, and MS in Nursing Education) are designed to assist the student in developing expertise in their chosen specialty. The faculty define practice experiences as opportunities for students to provide nursing care in a variety of practice learning environments that support end of program student learning outcomes, program outcomes, and adult learning needs. Practice experiences are interactive, individualized, experiential learning experiences that provide and/or influence health care.

There are 120 practice experience hours dispersed over four courses in the RN- BS Nursing Program portion of the program. Examples of practice experiences include: virtual clinical simulation in physical assessment, educating staff on new evidence based procedures, participating in administrative decisions about health care practices in an interprofessional team, and advocating for vulnerable populations by writing a letter to a legislator. There are 247.5 practice experience hours working with a mentor in the MS Capstone course in each degree program (Nursing Leadership and Administration of Health Care Systems, Nursing Education, and Nursing Informatics). The agency where students complete their capstone practice experience may require facility specific documentation and/or an affiliation agreement. Students must comply with all agency requirements and are responsible for any costs associated with additional documentation and/or an affiliation agreement.

Additionally, students in the MS in Nursing Education program complete an additional practice experience hours in Virtual Clinical Simulations in NUR 506 (Advanced Pharmacology) and NUR 507 (Advanced Physical Assessment).

^① If you transfer to a different degree program, the five-year time limit is based on the academic policy date for your new program.

EXCELSIOR COLLEGE BOARD OF TRUSTEES

Chair

HELEN BENJAMIN, PhD
Chancellor (Ret.)
Contra Costa
Community College District
Dallas, TX

Members

TERRY CONRY, PhD
Associate Vice President and Chief of Staff, Finance & Administration (Ret.)
Ohio University
Athens, OH

DON DEA, MBA (Treasurer)
Cofounder
Fusion Productions
Webster, NY

WILLIAM G. HARRIS, PhD
CEO
Association of Test Publishers
Washington, DC

DEBBIE DAWSON HATMAKER, PhD, RN, FAAN
Executive Director
American Nurses Association
Silver Springs, MD

GARRY W. JAUNAL, Esq.
Partner
Baker & McKenzie
Chicago, IL

MATT LOEB, CGEIT, CAE, FASAE
CEO
ISACA
Rolling Meadows, IL

MICHAEL J. LOUGHRAN, BA
President
Aon Affinity Health Care
Business Unit, Aon Risk Solutions
Hatboro, PA

KH MAMAN, MSEE, MBA
Managing Director,
Cyber Risk Services
Deloitte & Touche LLP
New York, NY

A. FRANK MAYADAS, PhD
Founding President (Ret.)
Online Learning Consortium
(formerly the Sloan Consortium)
Program Director (Ret.)
Alfred P. Sloan Foundation
Chappaqua, NY

KARIM MERCHANT, Esq.
Director of Development
and Volunteer Engagement
Aga Khan Foundation (AKF), U.S.A.
Washington, DC

JERRY L. NEFF, BS
Brigadier General (Ret.), ARNGUS
Regional President (Ret.)
M&I Bank
Bradenton, FL

MARY O'CONNOR, PhD, RN, FACHE
(Vice Chair)
Associate Professor
Notre Dame of Maryland University
Baltimore, MD

DAVID OLIKER, MA
President & CEO (Ret.)
MVP Health Care
Schenectady, NY

PAMELA J. TATE, MA, MS (Secretary)
Chief National Partnerships Officer
Strada Education Network
Chicago, IL

Q. ROSE WANG, MS
Managing Director
Rose Wang Strategies LLC
Bethesda, MD

KHORI WHITTAKER, MA
President & CEO
Lighthouse Academies
Wesley Chapel, FL

ALEC WHITTERS
CEO & Cofounder
Higher Learning Technologies
Iowa City, IA

Ex Officio

JAMES N. BALDWIN, EdD, JD
President
Excelsior College
Albany, NY

CAROLINE MOSCA
Managing Faculty Program Director
Excelsior College
Co-Chair
Excelsior College Faculty
Steering Council

DWAYN MILES HANFORD, MS
Team Chief,
Senior Intelligence Officer
Defense Intelligence Agency
Springfield, VA
President
Excelsior College Alumni Association

Chair Emeriti

ARTHUR J. GREGG, BS
Lt. General (Ret.)
U.S. Army
Dumfries, VA

JOSHUA L. SMITH, EdD
Professor & Director (Ret.),
Program in Higher Education
and Center for Urban Community
College Leadership
New York University,
School of Education,
New York, NY

RICHARD YEP, MPA, CAE, FASAE
CEO
American Counseling Association
Alexandria, VA

Emeriti

WILLIAM E. COX, EdD
President
Cox, Matthews, and Associates Inc.
Fairfax, VA

JEAN M. SMITH, BA
Vice President (Ret.)
J.P. Morgan Chase, Chase Community
Development Corporation
New York, NY

LAWRENCE E. VERTUCCI, BA
Executive Vice President and
Regional President (Ret.)
HSBC Bank, U.S.A.
Albany, NY

JOHN R. WETSCH, PhD, PMP
IT Director, Application
Service Delivery
North Carolina
Department of Revenue
Raleigh, NC

EXCELSIOR COLLEGE LEADERSHIP STAFF

Administrative Leadership Staff

JAMES N. BALDWIN, EdD, JD
President

JOHN CARON, PhD
Provost and Vice President for Academic Affairs

JAMES LETTKO, MS
*Chief Operating Officer and
Acting Chief Information Officer*

RICHARD HANNMANN, BS
Chief Financial Officer

DAWN GERRAIN, MBA
Chief Marketing and Business Development Officer

MARK HOWE, MBA
Vice President, Human Resources

KAREN HALACO, MPA, JD
General Counsel

SAUL MORSE, MBA
Chief Technology Officer

LISA DANIELS, PhD
Assistant Vice President, Analytics and Decision Support

MIKE LESCZINSKI, MPA
*Chief Communications and
Government Affairs Officer*

HOLLY ROGERS, BS
Executive Director of Office of Risk Management

Academic Leadership Staff

JOHN CARON, PhD
Provost and Vice President for Academic Affairs

EMILSEN HOLGUIN, PhD
*Associate Provost, Student Experience
and Success Services*

BARBARA B. PIEPER, PhD, RN
*Associate Provost for Student Advocacy
and Academic Engagement*

SCOTT V. DOLAN, PhD
Dean, School of Graduate Studies

MARY LEE POLLARD, PhD, RN, CNE
Dean, School of Nursing

LIFANG SHIH, PhD
Dean, School of Undergraduate Studies

SCHOOL OF NURSING FACULTY AND CONSULTING FACULTY

SUSAN E. ABBE, PhD, RN
(Higher Education Administration,
University of Connecticut)
Nursing Curriculum Specialist,
Connecticut Community College System,
Hartford, CT

MONIQUE ALSTON, PhD, RN
(Nursing Education, Capella University)
Associate Dean/Director of Nursing,
Montgomery College, Rockville, MD

IDA MARY ANDROWICH, PhD, RN, FAAN
(Health Resource Management,
University of Illinois at Chicago)
*Professor, Community Health and
Administrative Nursing, Niehoff School of
Nursing, Loyola University, Chicago, IL*

MARY-JANE ARALDI, MS, RN
(Nursing, Adelphi University)
Faculty Program Director,
Excelsior College, Albany, NY

SHARON A. ARONOVITCH, PhD, RN
(University of Nevada/Las Vegas)
Faculty Program Director,
Excelsior College, Albany, NY

ELIZABETH A. AYELLO,
PhD, RN, APRN, BC, FAAN
(Nursing, New York University)
Executive Editor, WCET Journal

M. SHARON BONI, PhD, RN
(Cardiovascular, The Catholic
University of America, Washington, DC)
*Dean, School of Nursing &
Allied Health Administration,*
Fairmont State University, Fairmont, WV

MARIANNE BRENNAN, MS, RN, CNOR
(Clinical Systems Management, Excelsior
College)
Faculty Program Director,
Excelsior College, Albany, NY

CATHY DECHANCE, PhD, RN
(Nursing, University of Phoenix)
Faculty Program Director,
Excelsior College, Albany, NY

ROBIN DEWALD, PhD, RN
(Nursing Education, Capella University)
Faculty Program Director,
Excelsior College, Albany, NY

TONI DOHERTY, PhD, RN
(Educational Theory and Practice,
State University of New York at Albany)
Associate Dean,
Excelsior College, Albany, NY

LISA FORSHEY, MSN, RN
(Grand Canyon University)
Faculty Program Director,
Excelsior College, Albany, NY

JENNIFER GENTRY, MS, RN, NEA-BC
(Clinical Systems Management, Excelsior
College)
Chief Nursing Executive,
Providence Portland Medical Center,
Portland, OR

NICOLE HELSTOWSKI, MS, RN
(Nursing Leadership and Management,
Walden University)
Faculty Program Director,
Excelsior College, Albany, NY

PAT IRONS, MA, RN
(Teaching and Administration in
Associate Degree Nursing,
Teachers College, Columbia University)
Professor Emerita,
Queensborough Community College,
Bayside, NY

BEVERLY K. JOHNSON, PhD, RN
(Nursing, University of Texas at Austin)
Associate Professor, College of Nursing,
Seattle University, Seattle, WA

BONNY KEHM, PhD, RN
(Nursing Education, Capella University)
Faculty Program Director,
Excelsior College, Albany, NY

ELLEN LADIEU, MS, RN, CNE
(Community Health Administration,
Russell Sage College)
Faculty Program Director,
Excelsior College, Albany, NY

MARY JO LAPOSTA, PhD, RN
(Parent-Child Nursing, Adelphi University)
Vice President and Chief Nursing Officer,
Saratoga Hospital, Saratoga, NY

CLAIRE LIGEIKIS-CLAYTON, RN, MS, EdD
(Binghamton University)
Faculty Program Director,
Excelsior College, Albany, NY

FRANCES DONOVAN MONAHAN, PhD, RN
(Research/Theory in Nursing,
New York University)
Professor, Department of Nursing,
Rockland Community College,
Suffern, NY

CAROLINE MOSCA, PhD, RN
(Nursing Science,
City University of New York)
Managing Faculty Program Director,
Excelsior College, Albany, NY

BARBARA NICHOLS, MS, RN, FAAN
(Behavior Disabilities and Counseling,
University of Wisconsin)
President and CEO,
Barbara Nichols Consulting,
Philadelphia, PA

DICEY A. O'MALLEY, PhD, RN
(Program Development and Evaluation,
State University of New York at Albany)
Professor, Nursing Department,
Hudson Valley Community College,
Troy, NY

VINCENT PAIR, DNP, FNP-BC, RD, RN
(Nurse Practitioner, University of
Alabama at Birmingham)
Family Nurse Practitioner,
US Department of Veterans Affairs,
Athens, GA

MARY LEE POLLARD, PhD, RN, CNE
(Educational Theory and Practice,
State University of New York at Albany)
Dean, School of Nursing,
Excelsior College, Albany, NY

LARRY D. PURNELL, PhD, RN, FAAN
(Health Services Administration,
Nursing, Columbia Pacific University)
Professor, School of Nursing,
University of Delaware

DARHON REES-ROHRBACHER,
DMus, MA, MS, RN
(Nursing Education, Excelsior College)
Faculty Program Director,
Excelsior College, Albany, NY

KARLA SCAVO, MS, RN
(Nursing Education, Excelsior College)
Faculty Program Director,
Excelsior College, Albany, NY

NELSON TUAZON, DNP, DBA, MAED, RN, NEA-BC, CENP, CPHQ, FACHE
(Nurse Executive Practice, Grand
Canyon University)
*Vice President & Associate Chief
Nursing Officer,*
University Health System,
San Antonio, TX

MICHELE WILSON, MS, RN
(Nursing Education,
American Sentinel University)
Faculty Program Director,
Excelsior College, Albany, NY

ADVISORY COMMITTEE TO THE EXCELSIOR COLLEGE SCHOOL OF NURSING

DEBORAH ELLIOTT, RN, MA

Executive Director,
Foundation of New York State Nurses,
Guilderland, NY

DEBRA FIELDS, RN, BS

Director, Access, Capacity,
and Demand Management,
Saratoga Hospital,
Saratoga Springs, New York

JOHN GUASTELLA

Executive Director,
American Heart Association,
Delmar, NY

KATHY HALE, RN, MS

Executive Director,
Northeast Multistate Division,
ANA, Albany, New York

LORI HOFFMAN-HOGG

RN, MS, CNS, AOCN

VHA National Oncology Clinical
Advisor, VA Central Office and Cancer
Program,
Director, Stratton VA Medical Center,
Albany, New York

JAMES HOPSICKER, RPh, MBA

Vice President of Pharmacy Services,
MVP Health Care,
Schenectady, New York

MARIE KAYE, RN, MS

Academic Coordinator and Director,
Center for Learning and Development,
Albany Medical Center Hospital,
Albany, New York

PATRICIA NEWELL-HELFAND, MS, RN

Nurse Leadership,
St Peter's Health Partners,
Albany, New York

MARY THERRIAULT, RN, MS

Senior Director,
Quality and Research Initiatives
Healthcare Association of New York,
Rensselaer, New York

JEAN MOORE

Director, Center for
Health Workforce Studies,
School of Public Health,
University at Albany,
Rensselaer, New York

New York State Education Department Inventory of Registered Programs

Higher Education General Information Survey Code for Classifying Academic Subject Areas

PROGRAM TITLE	HEGIS	AWARD
---------------	-------	-------

SCHOOL OF BUSINESS & TECHNOLOGY: BUSINESS PROGRAMS

Administrative/Management Studies	5004	AAS
Business	0501	BS
Accounting (NYS CPA Track)	0502	BS
Bachelor of Professional Studies in Business and Management	0599	BPS
Business	0506	MBA
Management	0506	MS

SCHOOL OF BUSINESS & TECHNOLOGY: TECHNOLOGY PROGRAMS

Cybersecurity	5199	Certificate
Cybersecurity Management	0799	Certificate
Cybersecurity	0702	BS
Technical Studies	5315	AAS
Technology	5315	AS
Technology	0925	BS
Electrical Engineering Technology	0925	BS
Information Technology	0702	BS
Nuclear Engineering Technology	0925	BS
Bachelor of Professional Studies in Technology Management	0599	BPS
Cybersecurity	0702	MS
Cybersecurity	0702	MS

PROGRAM TITLE	HEGIS	AWARD
---------------	-------	-------

SCHOOL OF HEALTH SCIENCES PROGRAMS

Public Health	1214	BS
Health Sciences	5201	AS
Health Sciences	1201	BS, MS
Health Care Management	1202	BS-MBA, MS in HCA

SCHOOL OF LIBERAL ARTS PROGRAMS

Liberal Arts	5649	AA, AS
Liberal Arts	4901	BA, BS
Liberal Studies	4901	MA
History	2205	BA, BS
Humanities	1599	BA
Natural Sciences	1901	BS
Psychology	2001	BA, BS
Social Sciences	2201	BS
Sociology	2208	BA, BS

SCHOOL OF NURSING PROGRAMS

Nursing	5208	AAS, AS
Nursing	1203.10	BS, RN-MS, MS
Nursing Education	1203.12	Certificate
Nursing Leadership and Administration of Health Care Systems	1203.12	Certificate

SCHOOL OF PUBLIC SERVICE PROGRAMS

Criminal Justice	5505	AS
Criminal Justice	2105	BS, MS
Homeland Security and Emergency Management	2101	BS
Military Leadership	2299	BS
National Security	2210	BS
Paralegal Studies	5099	AS
Public Administration	2102	MPA

ABOUT TEST PREPARATION SERVICES

The College offers UExcel® exams and Excelsior College® Examinations designed to help you advance your academic objectives through independent study. Though the exams are based on independent study, Excelsior College offers a comprehensive set of services and exam learning resources, including content guides, guided learning materials, and practice tests, to help you succeed.

These learning resources are prepared by Excelsior College so you can be assured that they are current and cover the content you are expected to master for the exams. These resources, and your

desire to learn, are usually all that you will need to succeed.

Some students may seek additional assistance or may be contacted by tutorial firms and test-preparation companies offering their own products and services.

Excelsior College is not affiliated with any tutorial or test preparation firm and does not endorse the products or services of these companies. We do not review the materials provided by these firms for the content or compatibility of their material and resources with UExcel® exams or Excelsior College Examinations®.

We have been made aware of several recent incidents in which a test-preparation firm has contacted an Excelsior College student requesting access to their Excelsior College Examinations® preparatory materials, including practice exams. Sharing learning resources with a test preparation firm is a clear violation of the academic honesty code. Students found to have engaged in academic dishonesty at Excelsior College will be subject to disciplinary action.

If you are approached by any individual or third-party about sharing any study materials provided by Excelsior College, please contact us at PR@excelsior.edu.

UEXCEL® EXAMS AND EXCELSIOR COLLEGE® EXAMINATIONS (ECes)

**“STUDENTS WITH
PRIOR LEARNING
ASSESSMENT
CREDIT NEEDED
LESS TIME TO
EARN DEGREES
AND HAD HIGHER
DEGREE-EARNING
RATES.”**

March 2010 CAEL (*The Council
For Adult & Experiential
Learning*) study, *Fueling the
Race to Postsecondary Success*

Register for an exam today,
or learn more by visiting:

excelsior.edu/exams

- ▶ The credit-bearing UExcel exams and Excelsior College Examinations save you time and money while accommodating your busy schedule.
- ▶ Join the tens of thousands of people, not just Excelsior College students, who have earned undergraduate college credit with UExcel exams and ECes.
- ▶ Study independently with a wealth of Excelsior College resources: everything from free examination content guides and free online tutoring to web-based practice exams and the Excelsior College Library. Take the exam when you're ready. Get the college credit you need to earn your degree.
- ▶ These exams complement the many other options for earning credit from Excelsior College: Excelsior College courses, industrial or military training, even a portfolio-based assessment to evaluate learning based on your life experience.
- ▶ Excelsior College has one of the oldest and most respected credit-by-exam programs developed and maintained by an accredited, degree-granting institution in the United States. Excelsior College, a private, not-for-profit institution, is widely recognized as a leader in the evaluation of prior learning, and offers a series of more than 60 undergraduate examination titles at both the upper- and lower-levels.

Contact the Admissions Office toll free at **888-647-2388**, to discuss how exams will fit into your academic plan.



7 Columbia Circle, Albany N.Y. 12203-5159
888.647.2388 • www.excelsior.edu

SON 19-278737 rev. 8/2019 • EX: 0571